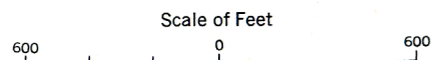


Figure 28  
 Wolframite-bearing veins, Burnt Hill Brook,  
 York County, New Brunswick  
 (From map supplied by Department of Lands and  
 Mines, Fredericton, New Brunswick)

Based on survey of lease line by Deputy W.E. Fish 1911, and  
 Transit-stadia survey by P.D.M. No. 3 under F. Barr, 1939



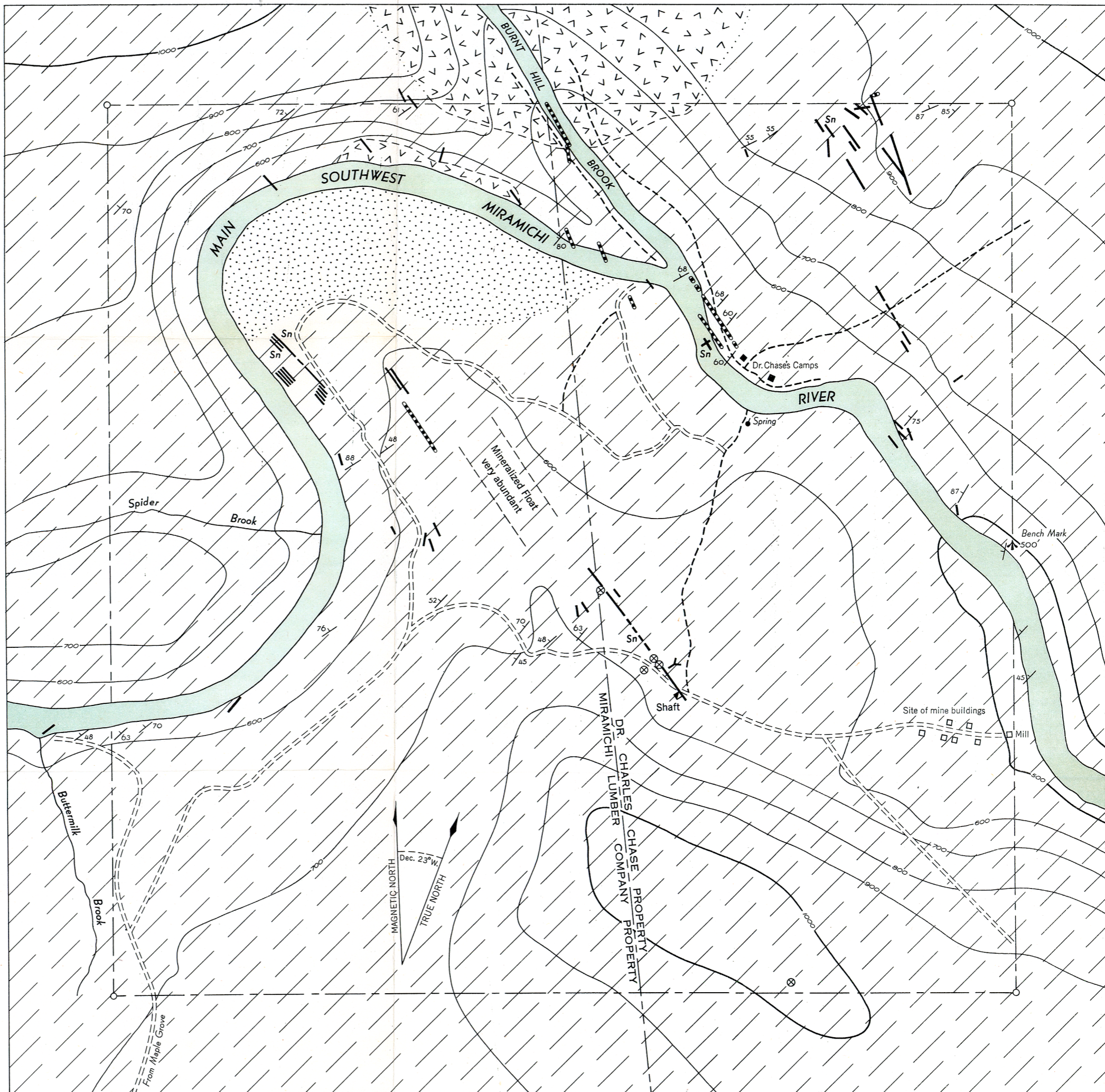
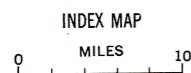
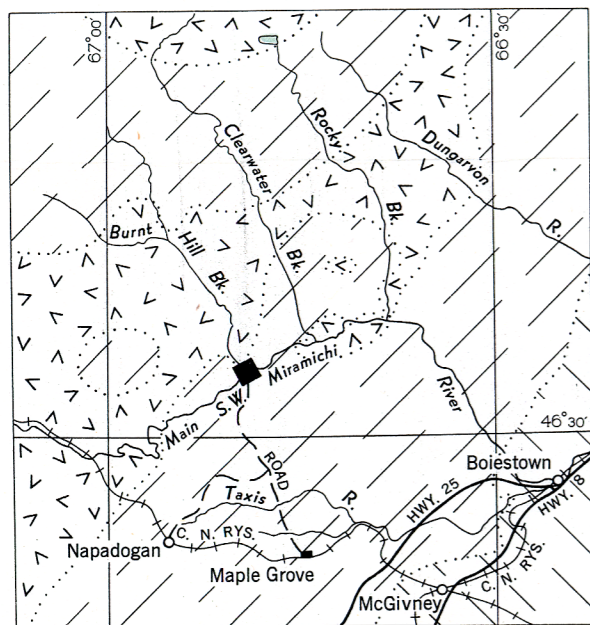
LEGEND

- Alluvium
- Wolframite bearing veins (Sn, cassiterite also present)
- Aplite and greisen dykes
- Sediments (Carboniferous) (on index map only)
- Granite (Devonian)
- Argillite and quartzite (Silurian)
- Bedding (inclined)
- Trench or pit
- Road
- Trail and portage
- Acadia tungsten lease

Geology by F. Barr, 1939

To accompany Economic Geology Series No. 17,  
 "Tungsten Deposits of Canada," by H. W. Little

Cartography by the Geological Cartography Unit



Published, 1958

Printed by the Surveys and Mapping Branch

This document was produced by scanning the original publication. Ce document est le produit d'une numérisation par balayage de la publication originale.