

Figure 10
Tungsten occurrences and geological associations,
Yellowknife-Beaulieu area, District of Mackenzie

Scale 1:506 880
 (1 inch to 8 miles)

Miles 8 0 8 16 Miles
 Kilometres 12 0 12 24 Kilometres

- Muscovitic granite
 - Granite, gneiss, and inclusions
 - Nodular quartz-biotite schist
 - Greywacke, slate, and quartzite
 - Mainly basic and siliceous volcanic rocks, conglomerate
- Geological boundary.....
 Zone boundary.....
 Scheelite occurrence.....
 Scheelite-bearing gold mine.....
 (143a-v east of Long. 114°, 144a-d west of Long. 114°)
 Beryllium-bearing pegmatite.....
 Lithium-bearing pegmatite.....
 Lithium and beryllium-bearing pegmatite.....
 Fault.....
 Road.....

- Tungsten occurrences, Yellowknife-Beaulieu District**
- 143 (east of Longitude 114°00')
- | | |
|---|---|
| (a) Moose Group | (l) Lucky Group |
| (b) Doubling Lake | (m) Dick Group |
| (c) Andre and W Groups | (n) WO ₃ Group |
| (d) COD Group | (o) Storm Group |
| (e) Ruth | (p) Victory Group |
| (f) Desperation Lake | (q) Ruth Group |
| (g) TA Group | (r) Tibbitt Lake |
| (h) Norma (Consolidated Beaulieu Mines) | (s) Thompson-Lundmark Mine |
| (i) July Group | (t) MT Group |
| (j) AC Group (Arctic Circle) | (u) Dome Lake |
| (k) Dot and Eva Groups | (v) Storm Group and Goodrock Gold Mines |
- 144 (west of longitude 114°00')
- | | |
|-------------------------------------|-------------------------|
| (a) Con and Rycon Mines, Negus Mine | (c) Ted Group |
| (b) Ptarmigan Mine | (d) Northeast Ryan Lake |

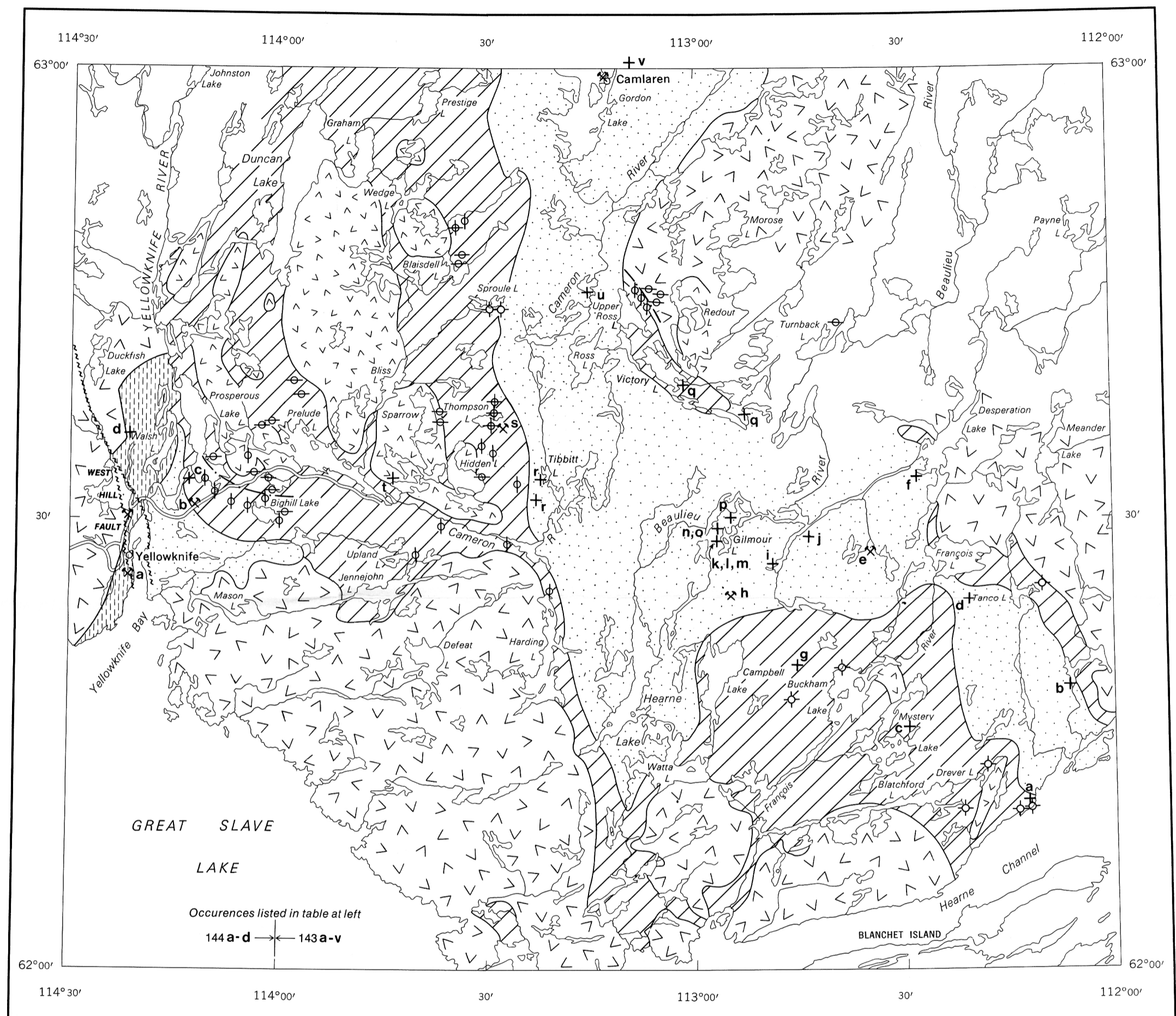
Geology compiled by R. Mulligan, 1977

To accompany GSC Economic Geology Report No. 32 by R. Mulligan

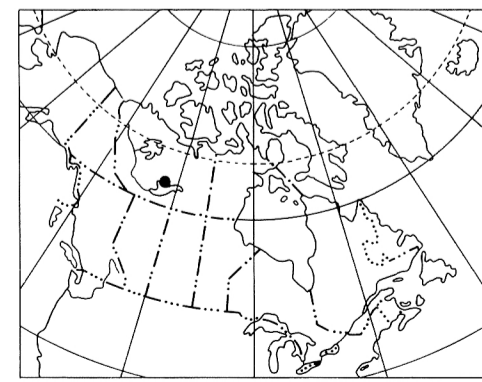
Geological cartography by the Geological Survey of Canada

Base-map cartography by the Geological Survey of Canada 1967, from map published at 1:500 000 by the Surveys and Mapping Branch, 1964

This document was produced by scanning the original publication.
 Ce document est le produit d'une numérisation par balayage de la publication originale.

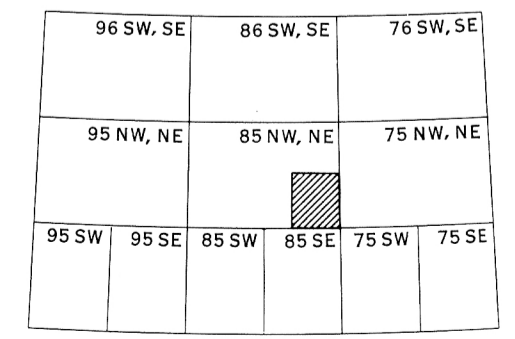


Printed by the Surveys and Mapping Branch 1983



INDEX MAP

See locations 143, 144 on map 1556A of this report



N. T. S. REFERENCE

Figure 10

