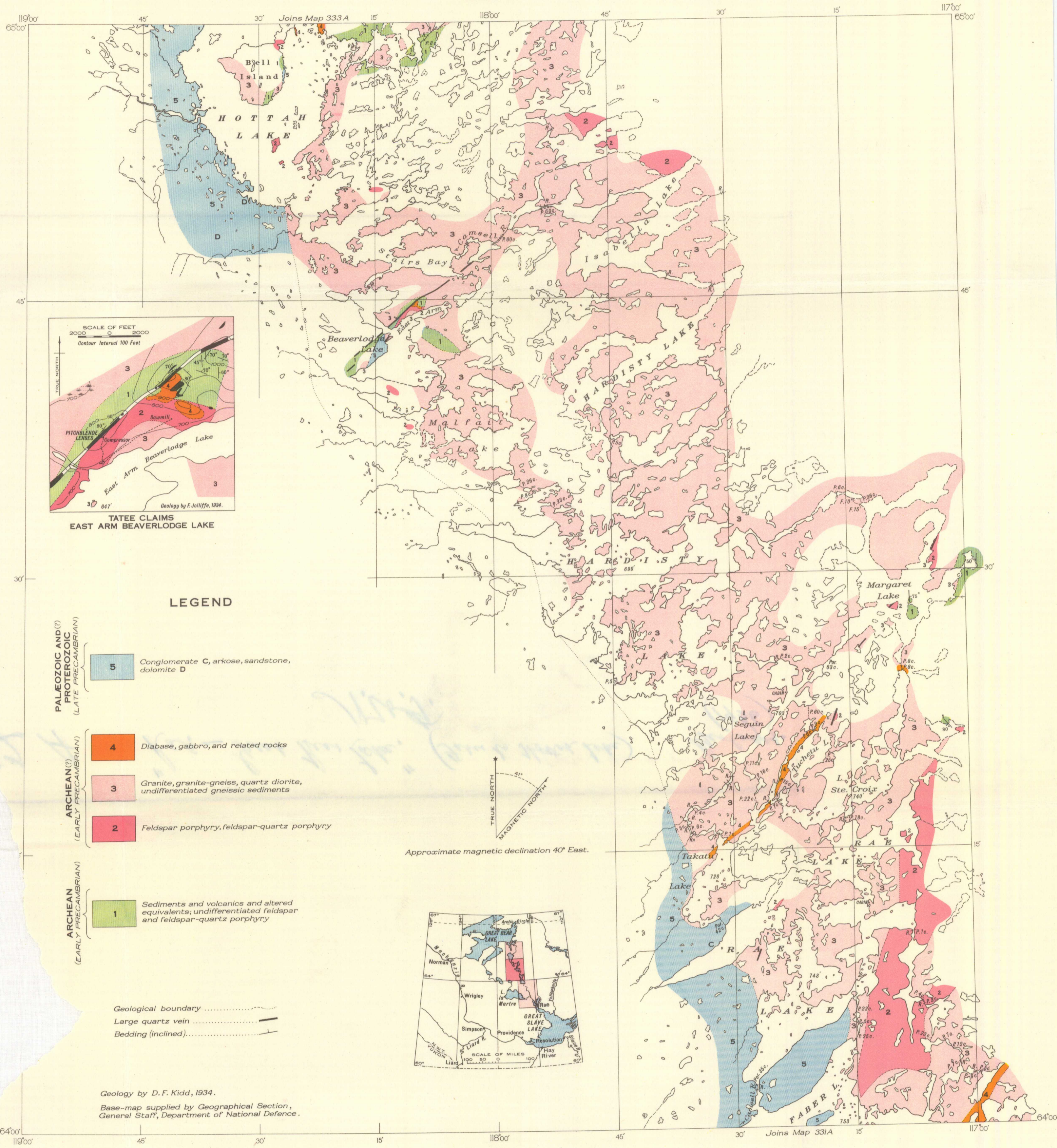


Canada  
Department of Mines

HON. T. A. CRERAR, MINISTER; CHARLES CAMSELL, DEPUTY MINISTER.

BUREAU OF ECONOMIC GEOLOGY  
GEOLOGICAL SURVEY

Issued 1936



MAP 332A  
CENTRE SHEET  
**RAE - GREAT BEAR LAKE AREA**  
(BETWEEN FABER LAKE AND HOTTAH LAKE)  
DISTRICT OF MACKENZIE  
NORTHWEST TERRITORIES

Scale: 253440 or 1 Inch to 4 Miles  
Miles  
Kilometres

NOT TO BE TAKEN FROM LIBRARY  
NE PAS SORTIR DE LA BIBLIOTHÈQUE

332A

This map has been produced from a scanned version of the original map  
Reproduction par numérisation d'une carte sur papier