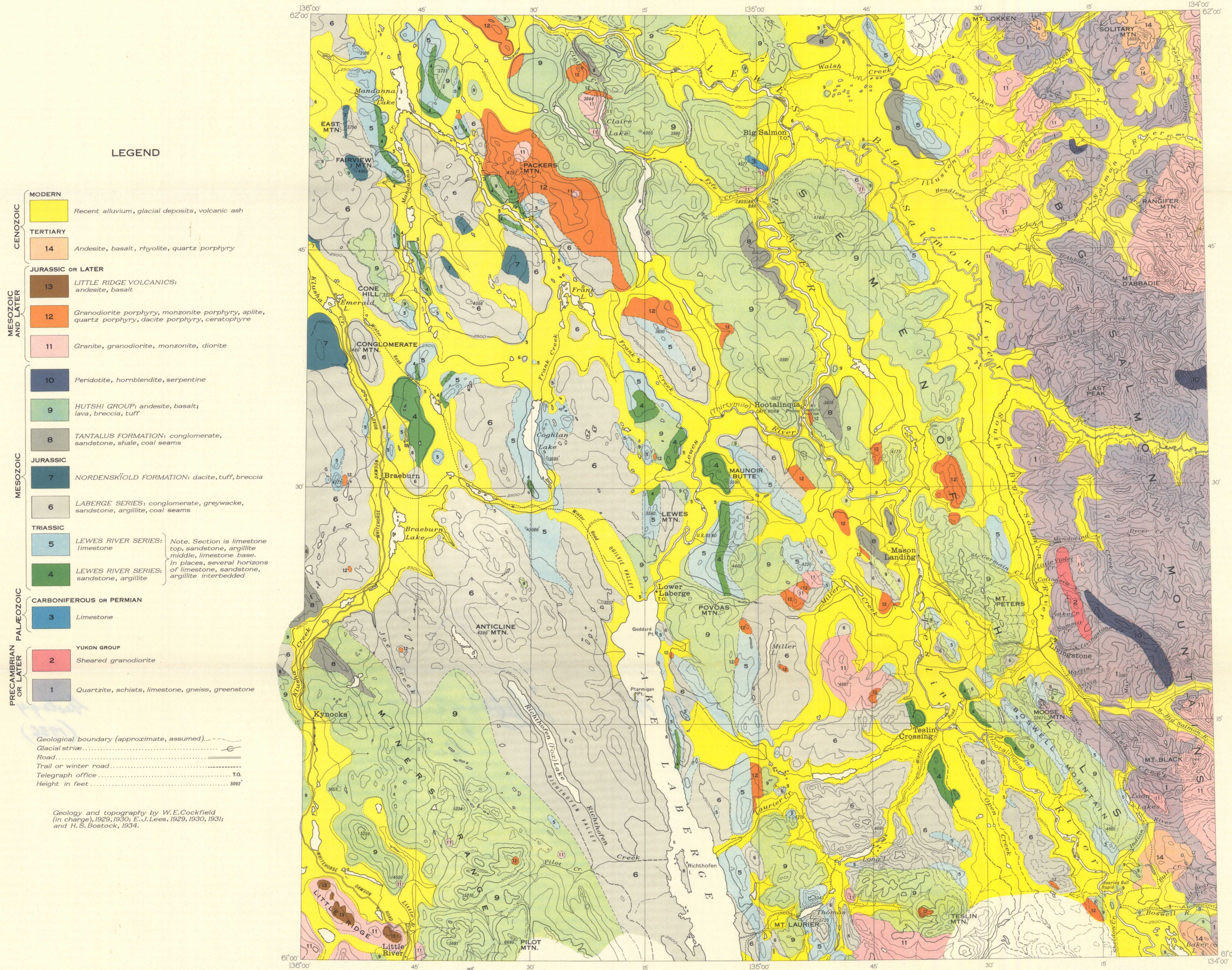


Canada
Department of Mines

HON. T. A. CREER, MINISTER, CHARLES CAMSELL, DEPUTY MINISTER.

BUREAU OF ECONOMIC GEOLOGY
GEOLOGICAL SURVEY

Issued 1936

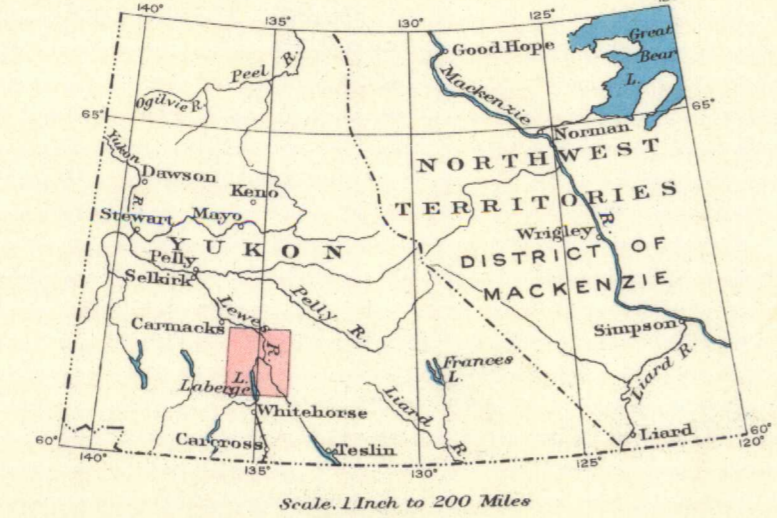


LEGEND

- CENOZOIC**
- MODERN
Recent alluvium, glacial deposits, volcanic ash
- TERTIARY
14 Andesite, basalt, rhyolite, quartz porphyry
- MESOZOIC AND LATER**
- 13 LITTLE RIDGE VOLCANICS: andesite, basalt
- 12 Granodiorite porphyry, monzonite porphyry, aplite, quartz porphyry, dacite porphyry, ceratophyre
- 11 Granite, granodiorite, monzonite, diorite
- 10 Peridotite, hornblendite, serpentine
- 9 HUTSHI GROUP: andesite, basalt; lava, breccia, tuff
- 8 TANTALUS FORMATION: conglomerate, sandstone, shale, coal seams
- MESOZOIC**
- JURASSIC
7 NORDENSKIÖLD FORMATION: dacite, tuff, breccia
- 6 LABERGE SERIES: conglomerate, greywacke, sandstone, argillite, coal seams
- TRIASIC
5 LEWES RIVER SERIES: limestone
Note. Section is limestone top, sandstone, argillite middle, limestone base. In places, several horizons of limestone, sandstone, argillite interbedded
- 4 LEWES RIVER SERIES: sandstone, argillite
- PRECAMBRIAN OR LATER**
- CARBONIFEROUS OR PERMIAN
3 Limestone
- 2 YUKON GROUP
Sheared granodiorite
- 1 Quartzite, schists, limestone, gneiss, greenstone

Geological boundary (approximate, assumed).....
Glacial striae.....
Road.....
Trail or winter road.....
Telegraph office..... T.O.
Height in feet..... 5000'

Geology and topography by W.E. Cockfield (in charge), 1929, 1930; E.J. Lees, 1929, 1930, 1931; and H.S. Gostock, 1934.



MAP 372A
LABERGE SHEET
YUKON TERRITORY
Scale, 253,440 or 1 inch to 4 Miles
Kilometres
Contour interval 500 Feet

TRUE NORTH
MAGNETIC NORTH
Approximate magnetic declination, 34'16" East

NOT TO BE TAKEN FROM LIBRARY
NE PAS SORTIR DE LA BIBLIOTHÈQUE

372A