

THE CANADIAN CORDILLERA					
SYSTEMS	AREAS	SUBDIVISIONS			
		PRIMARY	SECONDARY	TERTIARY	QUATERNARY
EASTERN SYSTEM	ROCKY MOUNTAIN AREA	ROCKY MOUNTAIN FOOTHILLS ROCKY MOUNTAINS ROCKY MOUNTAIN TRENCH			
	MACKENZIE MOUNTAIN AREA	LIARD PLATEAU FRANKLIN MOUNTAINS MACKENZIE PLAIN MACKENZIE MOUNTAINS PEEL PLATEAU		TLOGOTSHO RANGE NAHANNI RANGE CAMSELL RANGE MCCONNELL RANGE NORMAN RANGE	Liard, Labiche Ranges MacKay Range Trenor Range Bonnet Plume Basin
	ARCTIC MOUNTAIN AREA	ARCTIC COASTAL PLAIN ARCTIC COASTAL PLAIN TRENCH RICHARDSON MOUNTAINS BRITISH MOUNTAINS			
INTERIOR SYSTEM	SOUTHERN PLATEAU AND MOUNTAIN AREA	COLUMBIA MOUNTAINS INTERIOR PLATEAU	Purcell Mountains Selkirk Mountains Monashee Mountains Cariboo Mountains Fraser Plateau Nechako Plateau		Ilgichuz Range
	CENTRAL PLATEAU AND MOUNTAIN AREA	OMEGA AND CASSIAR MOUNTAINS SKEENA AND HAZELTON MOUNTAINS AND STIKINE PLATEAU	OMEGA Mountains Cassiar Mountains Hazleton Mountains Nass Basin Skeena Mountains Stikine Plateau	FINLAY RANGES SWANELL RANGES HOSEM RANGES KECHIKA RANGES STIKINE RANGES DEASE PLATEAU BULEY RANGE NASS RANGE Babine Range Atna Range Scintine Range Tattai Range Slingshot Range Eagles Range Strata Range Owega Range Klappan Range Groundhog Range	Wolverine Range Butler Range Russell Range Tenahli Range Inginka Range Three Sisters Range Babine Range Atna Range Scintine Range Tattai Range Slingshot Range Eagles Range Strata Range Owega Range Klappan Range Groundhog Range
	SYSTEM	LIARD PLAIN HYLAND PLATEAU SELWYN MOUNTAINS OGILVIE MOUNTAINS	Logan Mountains Hess Mountains Wernecke Mountains Southwest Ranges Main Ranges Tintina Valley		Itai Range
WESTERN SYSTEM	NORTHERN PLATEAU AND MOUNTAIN AREA	YUKON PLATEAU	Eastern Yukon Plateau Southern Yukon Plateau Western Yukon Plateau	PELLY PLATEAU MACMILLAN PLATEAU STEWART PLATEAU TESLIN PLATEAU NUSITLIN PLATEAU LEWES PLATEAU PELLY MOUNTAINS KLONDIKE PLATEAU KLUANE PLATEAU SHAKWAK VALLEY PORCUPINE PLATEAU PORCUPINE PLAIN	Anvil Range McArthur Range Gustavus Range Ladue Range Miners Range St. Cyr Range Big Salmon Range Glenyon Range Simpson Range Dawson Range Ruby Range Niding Range Takhli Valley Aishik Basin Wellesley Basin Keete Range Old Crow Range Eagle Plain Bell Basin Old Crow Plain
	COAST MOUNTAIN AREA	CASCADE MOUNTAINS COAST MOUNTAINS	Pacific Ranges Boundary Ranges Georgia Depression Seymour Arch Hicase Depression Vancouver Island Ranges Queen Charlotte Ranges		Spectrum Range Queen Charlotte Lowland
	OUTER MOUNTAIN AREA	INSULAR MOUNTAINS ALASKAN ISLAND MOUNTAINS ST. ELIAS MOUNTAINS	Kluane Ranges Duke Depression Aisek Ranges Icefield Ranges Fairweather Range		Skidgate Plateau Donjek Range

Note: This chart includes only the subdivisions referred to in the report. Blank spaces in the columns of subdivisions do not indicate that subdivisions cannot be made.

LEGEND

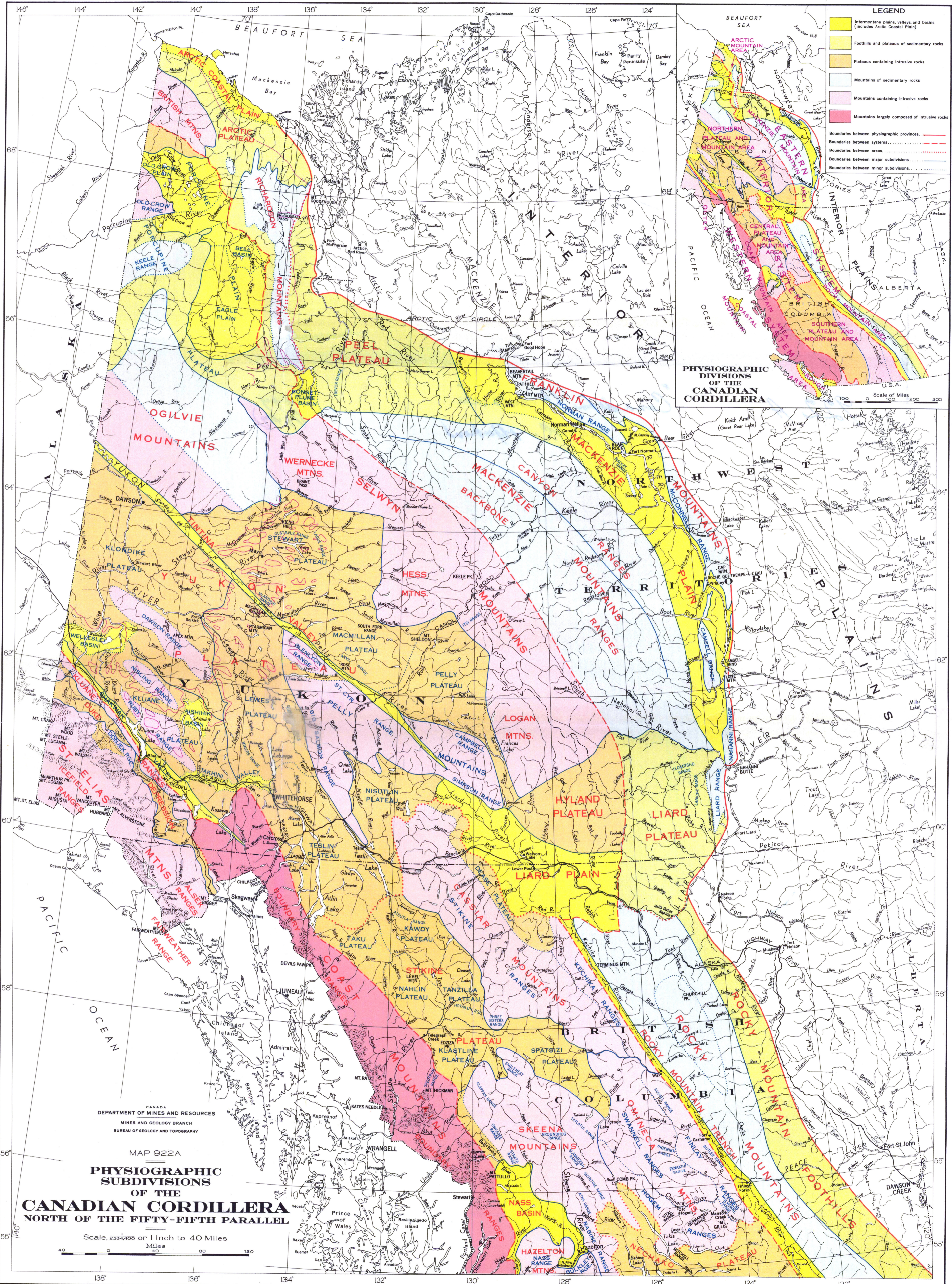
- Intermontane plains, valleys, and basins (includes Arctic Coastal Plain)
- Foothills and plateaus of sedimentary rocks
- Plateaus containing intrusive rocks
- Mountains of sedimentary rocks
- Mountains containing intrusive rocks
- Mountains largely composed of intrusive rocks

- Boundaries between physiographic provinces. ————
- Boundaries between systems. - - - - -
- Boundaries between areas. ······
- Boundaries between major subdivisions. ————
- Boundaries between minor subdivisions. ————
- Western limit of last glaciation. ————

Physiography by H. S. Bostock, 1946.

Compilation and cartography by the Drafting and Reproducing Division, 1947.

GEOLOGICAL SURVEY



PHYSIOGRAPHIC DIVISIONS OF THE CANADIAN CORDILLERA

This map has been produced from a scanned version of the original map. Reproduction par numérisation d'une carte sur papier.