

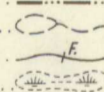

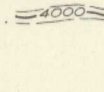
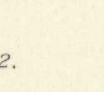
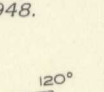

LEGEND

- CENOZOIC**
- QUATERNARY**
PLEISTOCENE AND RECENT
- 11 Glacial drift, talus, alluvium
- CRETACEOUS (?)**
LOWER CRETACEOUS (?)
- 10 INKLIN GROUP
Tuff, argillite, greywacke, sandstone, conglomerate, limestone; diopside- and hornblende-albite-oligoclase dacite
- JURASSIC (?)**
- 9 YONAKINA GROUP
Argillite, sandstone, tuff, conglomerate, greywacke, limestone; oligoclase dacite, minor albite-oligoclase andesite
- 8 SINWA FORMATION: chiefly limestone; sandstone, argillite; thin seams of coal
- MESOZOIC**
- JURASSIC**
LOWER JURASSIC
- 7 TAKWAWONI GROUP
Argillite, conglomerate, sandstone, arkose, greywacke, tuff; hornblende- and biotite-andesine dacite
- TRIASSIC**
UPPER TRIASSIC
- 6 HONAKTA FORMATION: limestone
- 5 STUHINI GROUP
Tuff, conglomerate, greywacke, breccia, argillite, quartzite, limestone; oligoclase andesite, albite and andesine andesites; minor intrusions
- 4 KING SALMON GROUP
Tuff, greywacke, argillite, conglomerate, breccia, limestone; augite-oligoclase (rarely - albite) andesite
- PERMIAN (?)**
- 3 Chiefly limestone; chert, quartzite
- PRE-PERMIAN (?)**
- 2 Schist, quartzite, argillite, slate; minor intrusions
- POST-TRIASSIC**
COAST INTRUSIONS
- 1A, hornblende-andesine granodiorite, minor quartz diorite; 1B, biotite-oligoclase-andesine granodiorite; 1C, biotite-andesine granodiorite; 1D, augite-hornblende-biotite-andesine diorite; 1E, quartz monzonite; 1F, chiefly oligoclase porphyry; 1G, intrusive rocks (not classified)

- Fossil locality ⊙
Anticlinal axis ↕
Synclinal axis ↘
Prospect X

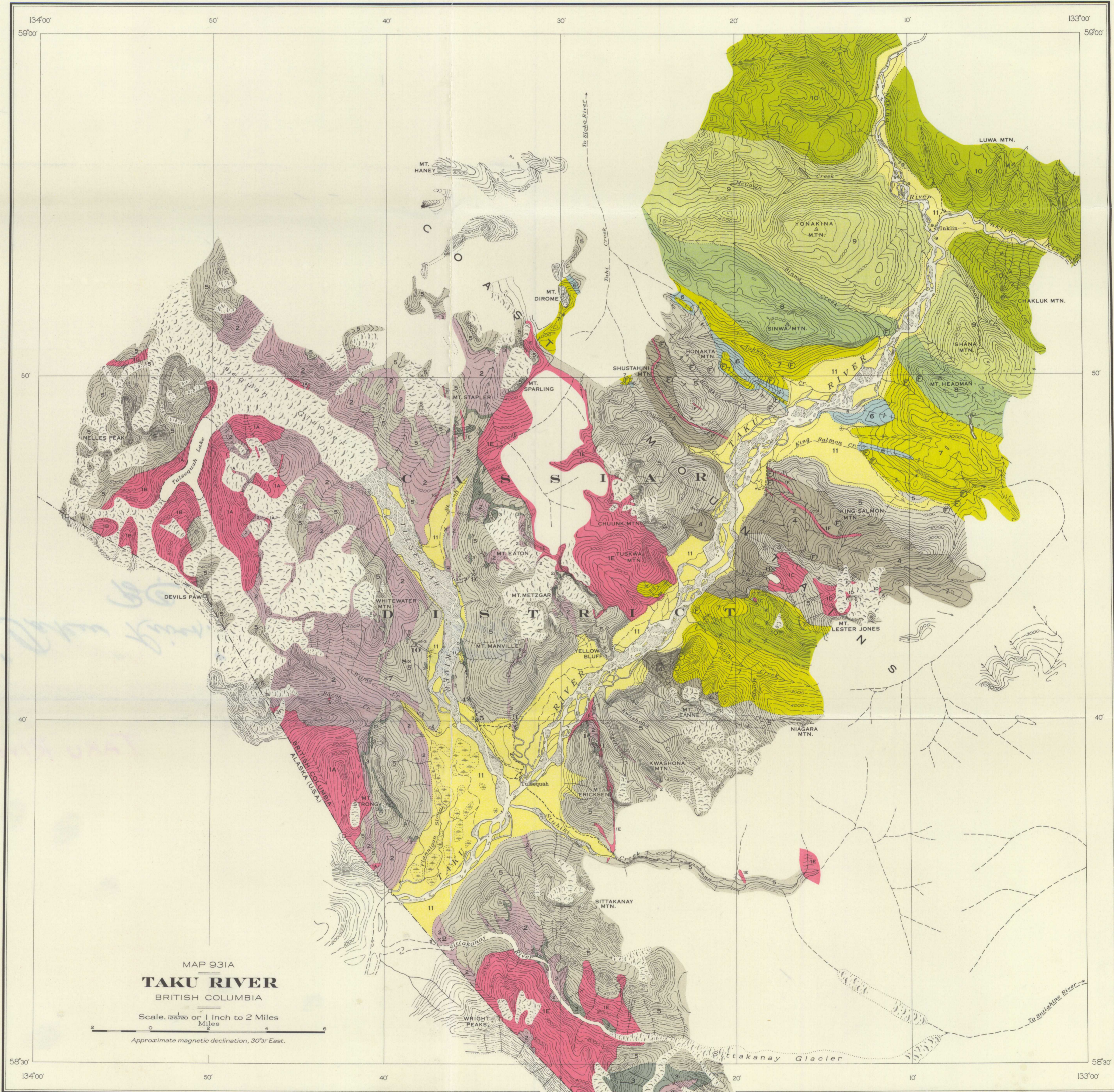
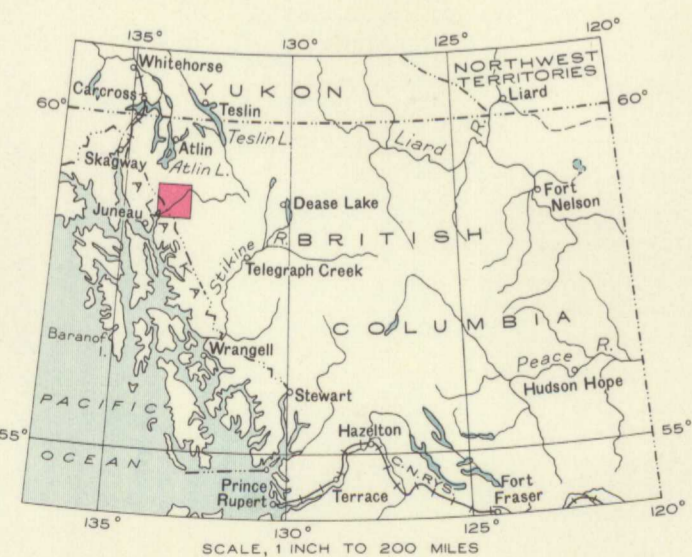
INDEX TO PROSPECTS

- Erickson-Ashby 1
Highland Boy 2
Manville 3
Pottatch 4
Pottatch-Banker 5
Red Cap 6
Silver Bird 7
Silver Queen 8
Tulsequah Chief 9
Whitewater 10
Note. The Whitewater prospect (10) is now the Polaris-Taku mine.

- Trail - - - - -
Building ■
Triangulation station △
Survey monument ⊠
International boundary - - - - -
Lake and stream (position approximate) ~~~~~
Fall 
Marsh 
Glacier 
Sand bar 
Contours (interval 250 feet) 
Contours (position approximate) 

Geology by F.A.Kerr, 1929, 1930, and 1932.

Base-map surveyed and compiled by the Topographical Survey, 1930. Cartography by the Drafting and Reproducing Division, 1948.



NOT TO BE TAKEN FROM LIBRARY
NE PAS SORTIR DE LA BIBLIOTHÈQUE

931A