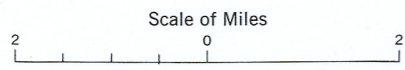


Figure 1
General geology of Yellowknife Bay-Prosperous Lake area, District of MacKenzie, Northwest Territories



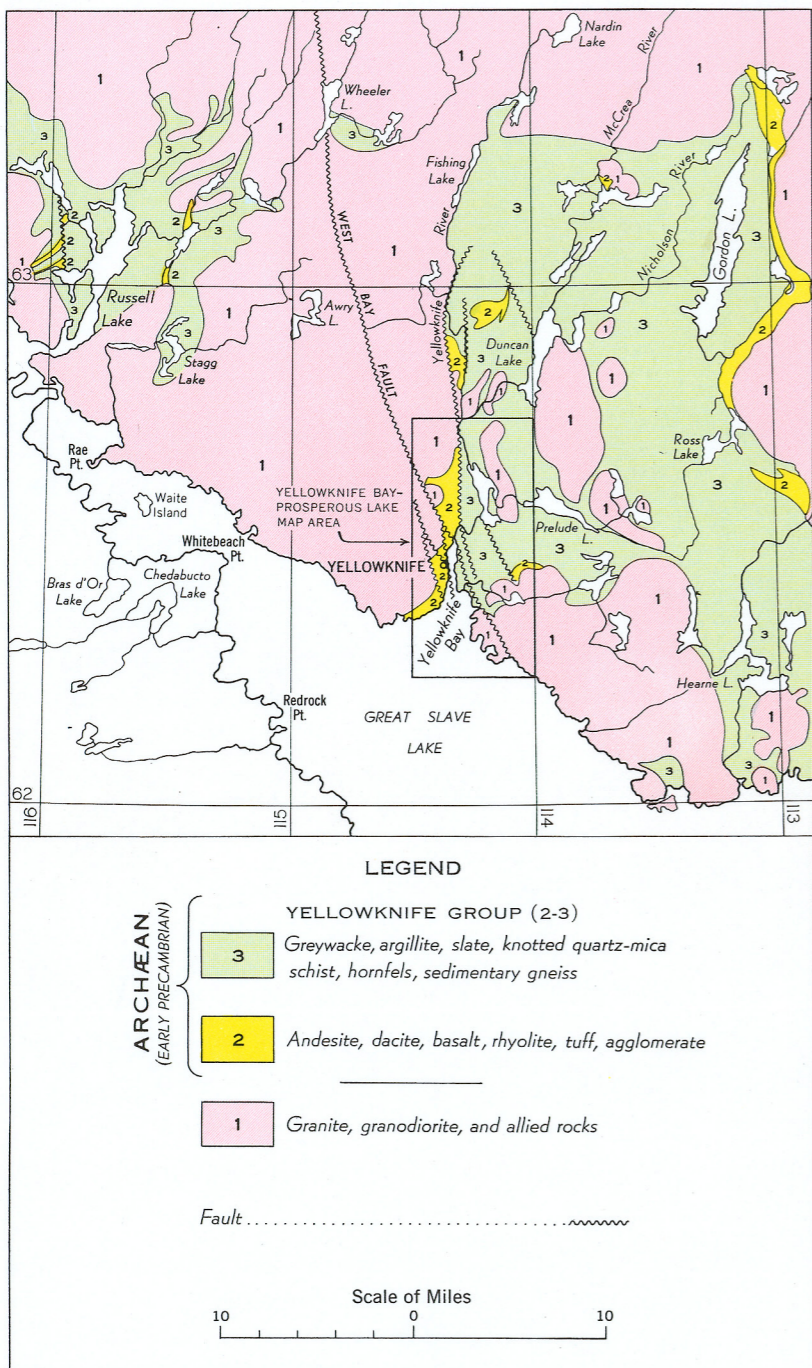
LEGEND

- PROTEROZOIC**
- Diabase, gabbro
 - Prosperous Lake granite
 - Granite, granodiorite, and allied rocks
- ARCHÆAN**
- YELLOWKNIFE GROUP**
- DIVISION B**
- Greywacke, argillite, quartzite, slate, phyllite, arkose, and conglomerate
 - Nodular quartz-mica schist and hornfels derived from 3
- DIVISION A**
- Dacite, trachyte, rhyolite, quartz porphyry; breccia, agglomerate, and tuff; includes some conglomerate and meta-gabbro and meta-diorite dykes and sills
 - Andesite, basalt, dacite; chert, tuff, agglomerate; includes meta-gabbro and meta-diorite dykes and sills and quartz-feldspar porphyry dykes and masses
- Conglomerate and quartzite (age relative to Yellowknife Group uncertain)
- Drift-covered area (only the larger areas are shown).....
- Flow contact (commonly marked by chert, tuff, or breccia).....
- Fault (defined, approximate, assumed).....
- Glacial striae.....
- Height in feet above mean sea-level (based on datum of 495 feet, Great Slave Lake)..... 648'

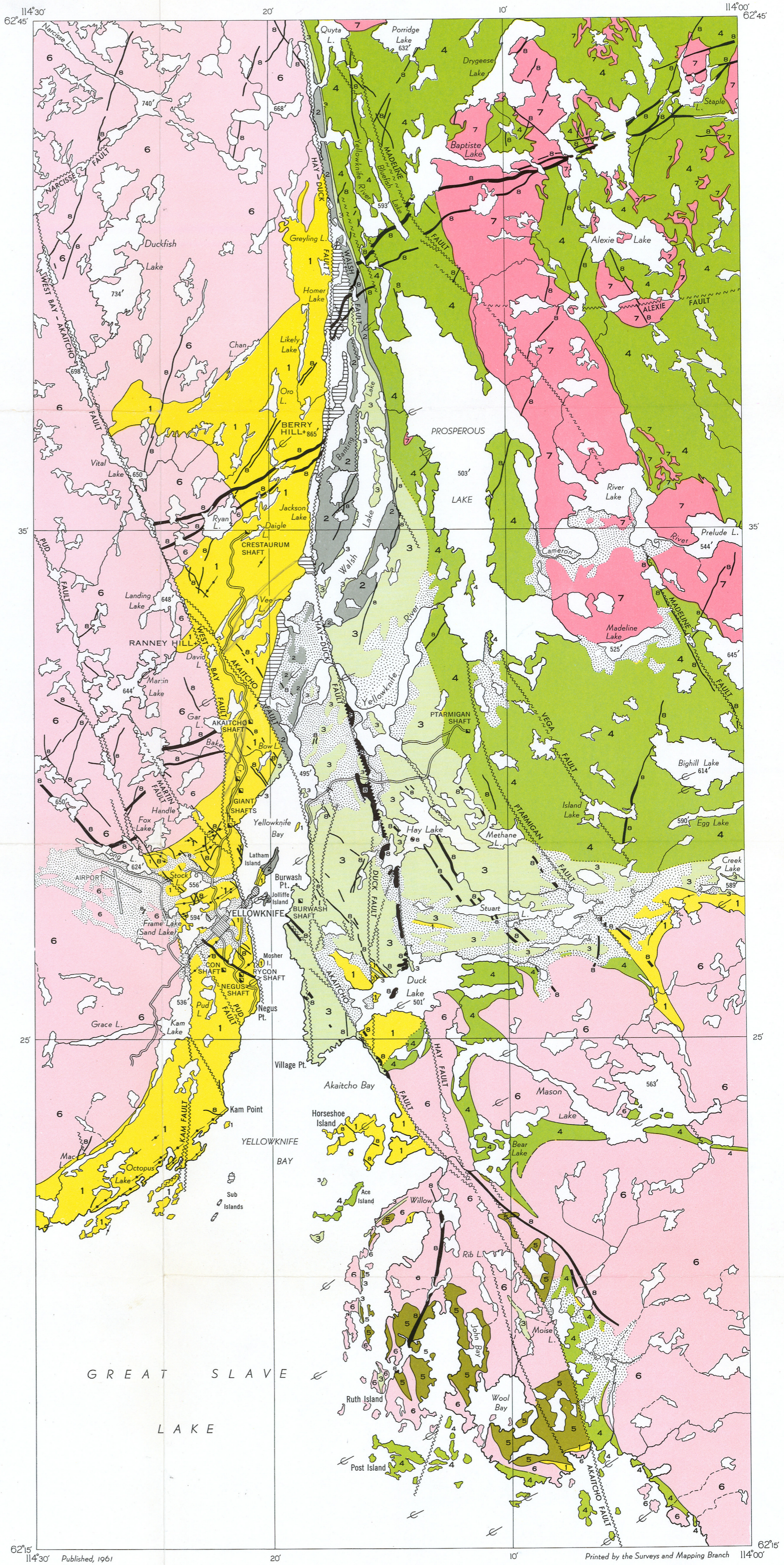
Sources of Information
Geological Survey of Canada, Maps 709A and 868A
Geological reconnaissance by R. W. Boyle, 1950, 1951, 1952

Cartography by the Geological Survey of Canada

To accompany Memoir 310, by R. W. Boyle



Regional geological setting of Yellowknife Bay-Prosperous Lake area



Published, 1961

Printed by the Surveys and Mapping Branch

Figure 1