

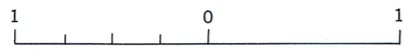


GEOLOGICAL SURVEY OF CANADA
DEPARTMENT OF MINES AND TECHNICAL SURVEYS

Figure 3

Yellowknife Bay - Prosperous Lake area showing gold-bearing shear zones in greenstone rocks, gold-quartz deposits in sedimentary rocks, and late fault systems

Scale of Miles



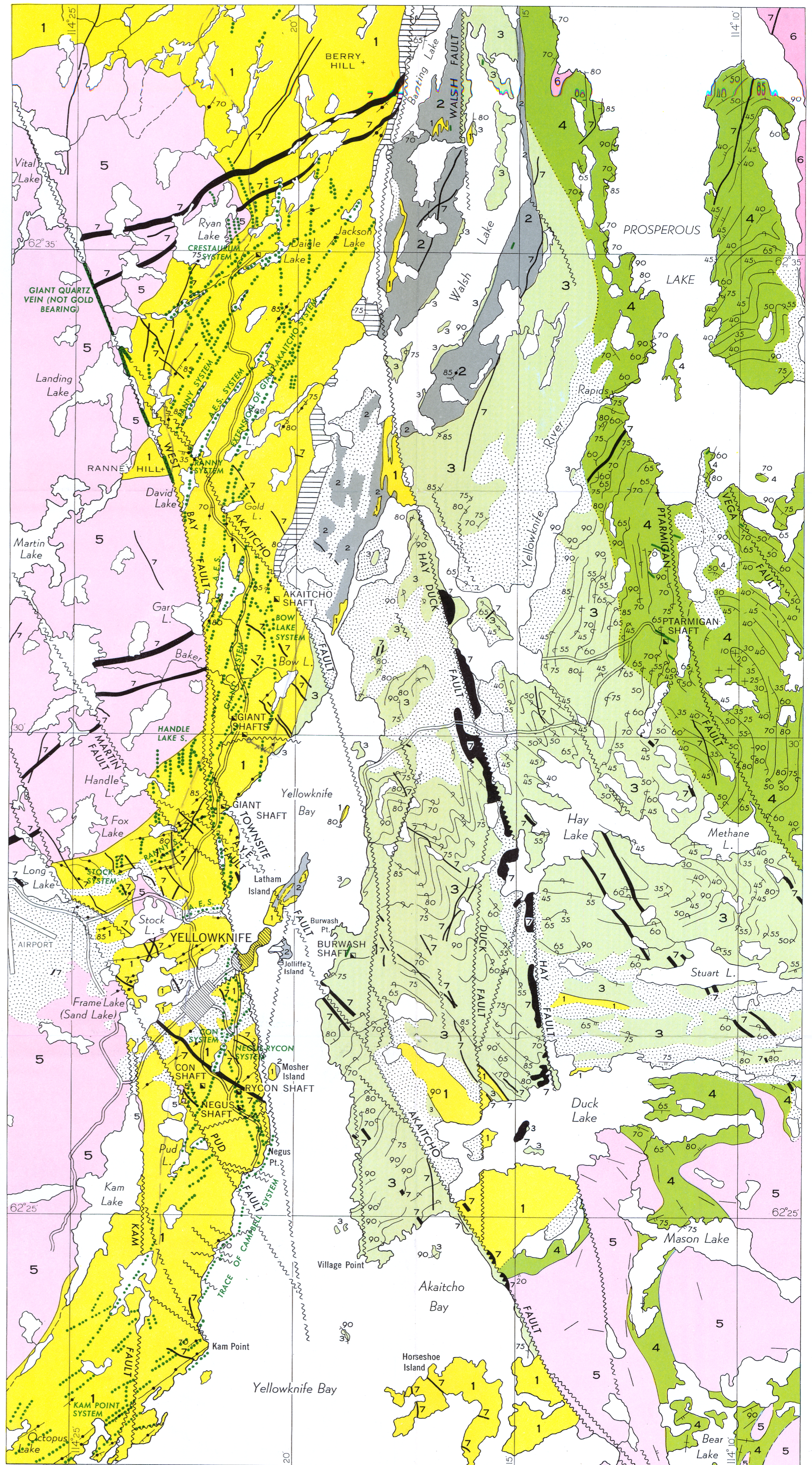
LEGEND

- PROTEROZOIC**
- X 7 Diabase, gabbro
 - 6 Prosperous Lake granite
 - 5 Granodiorite, granite, and allied rocks
- ARCHAEO**
- DIVISION B**
- 3 Greywacke, argillite, quartzite, slate, phyllite, arkose and conglomerate
 - 4 Nodular quartz-mica schist and hornfels derived from 3
- DIVISION A**
- 1 Andesite, basalt, dacite; chert, tuff, agglomerate: includes meta-gabbro and meta diorite dykes and sills and quartz-feldspar porphyry dykes and masses
- YELLOWKNIFE GROUP**
- Conglomerate, quartzite (age relative to Yellowknife Group uncertain)
 - Gold quartz vein
 - Shear zone (defined, approximate)
- Drift-covered area (only the larger areas are shown).....
- Fault (defined, approximate).....
- Bedding, general trend.....
- Bedding (inclined, overturned, horizontal, dip unknown).....
- Bedding (inclined, vertical) upper side of bed unknown.....
- Flow contact.....

Sources of Information

Geological Survey of Canada, Maps 709A and 868A
Geological Survey of Canada papers 48-17, 49-26, 50-34, 52-24
Various mining company reports and maps.
Geological investigation by R. W. Boyle, 1950, 1951, 1952

Cartography by the Geological Survey of Canada
To accompany Memoir 310, by R. W. Boyle



Published, 1961

Printed by the Surveys and Mapping Branch