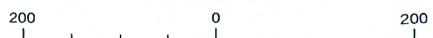
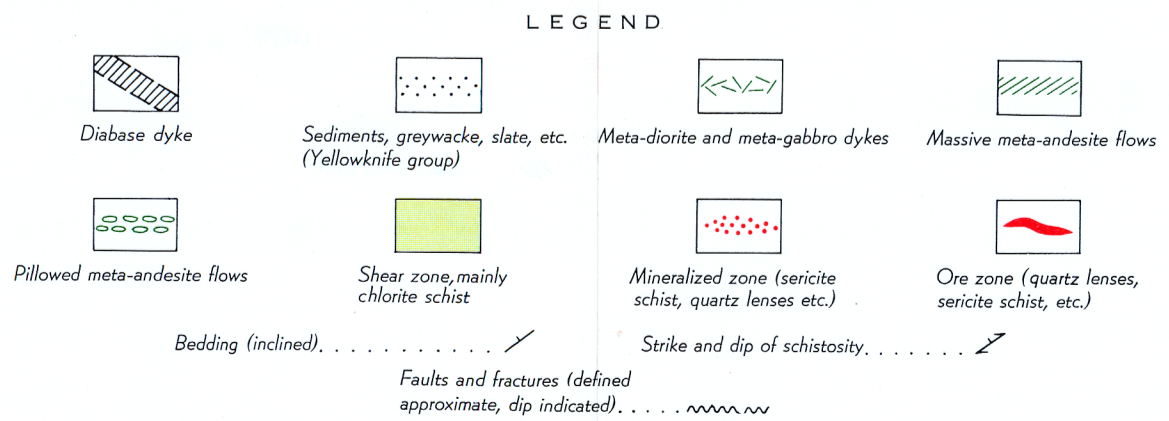

 GEOLOGICAL SURVEY OF CANADA
 DEPARTMENT OF MINES AND TECHNICAL SURVEYS
 Figure 9
 Geological plans and section of the Campbell system,
 Con mine, Yellowknife area, District of Mackenzie, N. W. T.
 To accompany Memoir 310, by R. W. Boyle
 Cartography by the Geological Survey of Canada

SCALE OF FEET

Sources of Information
 Geological Division, Consolidated Mining and Smelting Co., Ltd.
 Geological investigation by R. W. Boyle, 1952