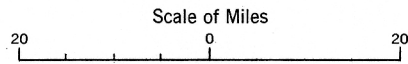




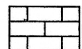
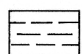
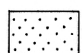
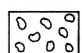

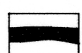
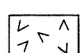
GEOLOGICAL SURVEY OF CANADA  
DEPARTMENT OF MINES AND TECHNICAL SURVEYS

Figure 19

Restored sections across Whitehorse Trough  
in southwestern Yukon Territory during Mesozoic era



LEGEND

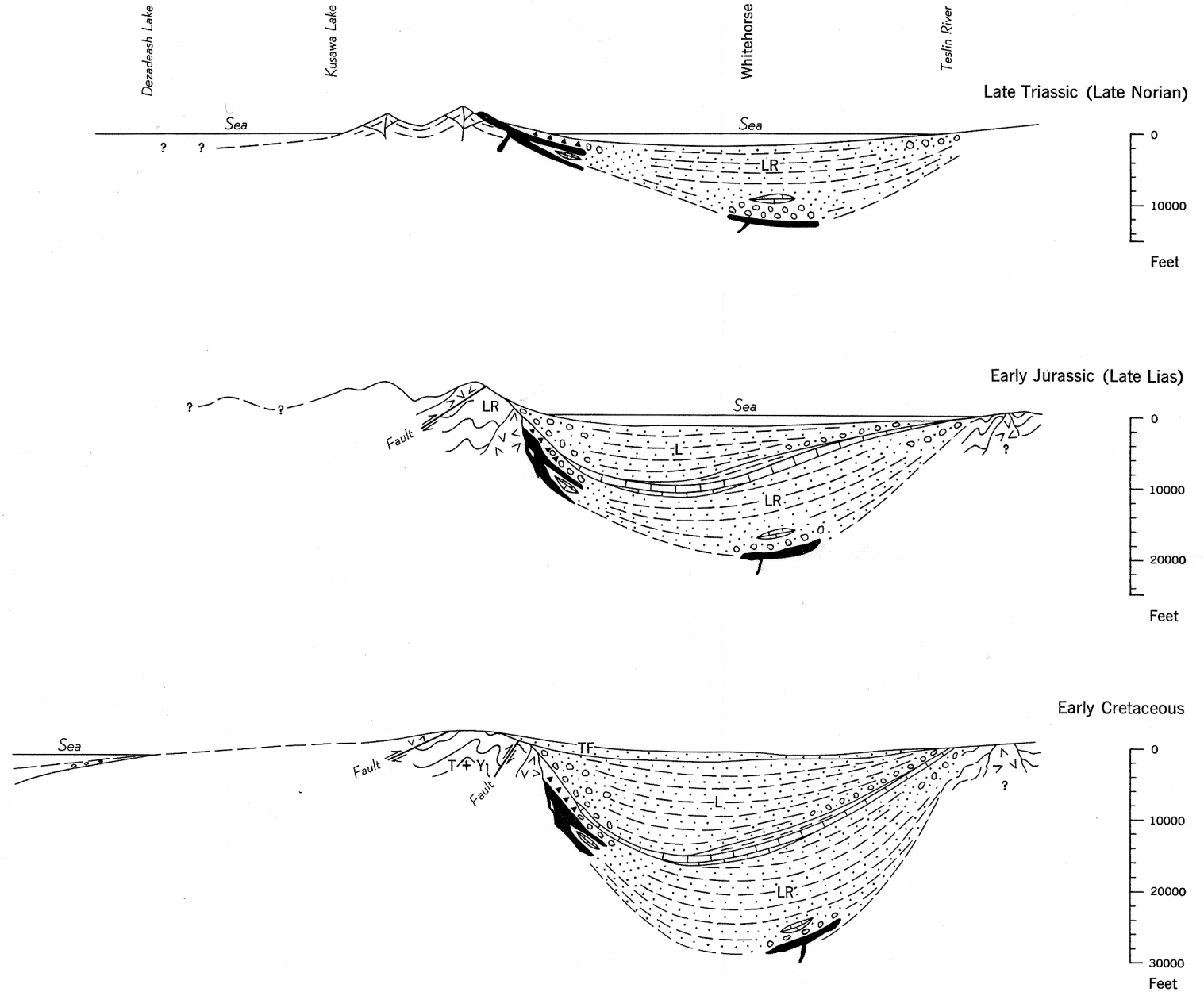
-  Limestone
-  Argillaceous rocks
-  Arenaceous rocks
-  Conglomerate
-  Volcanic breccia
-  Andesitic and basaltic lava
-  Granitic rocks

- Tantalus formation. . . . . TF
- Laberge group. . . . . L
- Lewes River group. . . . . LR
- Taku group. . . . . T
- Yukon group. . . . . Y

Geology by J. O. Wheeler

To accompany Memoir 312 by J. O. Wheeler

Cartography by the Geological Survey of Canada



This document was produced  
by scanning the original publication.

Ce document est le produit d'une  
numérisation par balayage  
de la publication originale.