

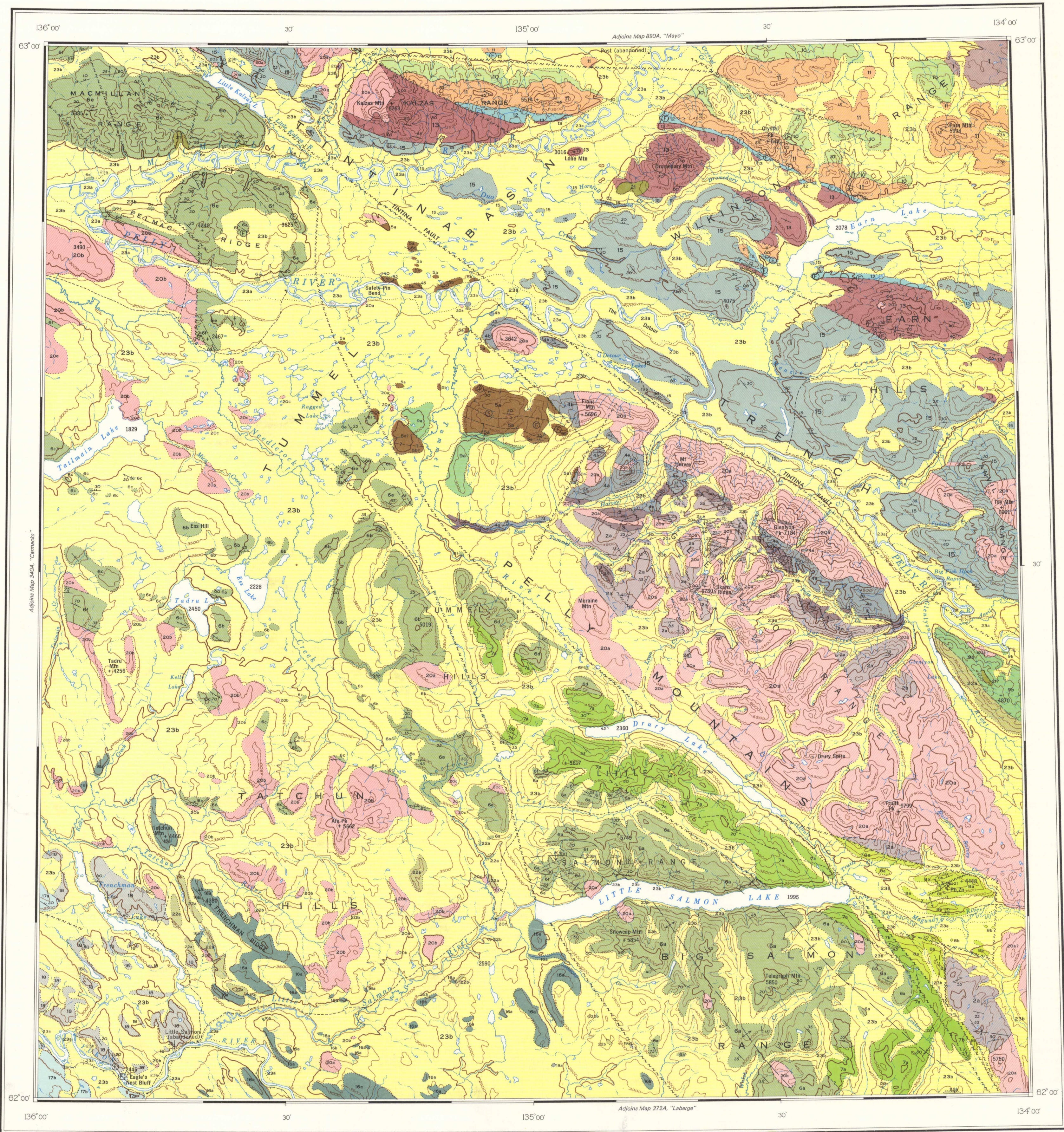
LEGEND

- PLEISTOCENE AND RECENT**
- 23** 23a, stream deposits: gravel, sand, silt; 23b, glacial gravel, sand, silt, clay, till, volcanic ash, bog deposits and soil; few if any bedrock exposures
- TERTIARY**
- 22** 22a, basaltic flows, minor shale and conglomerate;
22b, trachytic and basaltic flows; may be younger than 22a
- 21** Quartz-feldspar porphyry, rhyolite
- JURASSIC AND/OR CRETACEOUS AND (?) EARLIER**
- 20** 20a, biotite granodiorite and quartz monzonite; minor biotite-hornblende quartz diorite and leuco-quartz monzonite; 20b, biotite-hornblende granodiorite, quartz monzonite, quartz diorite; 20c, augite-hornblende monzonite and syenite; minor mafic rocks; 20d, hornblende diorite; 20e, gneissic granitic rocks
- JURASSIC (?) AND CRETACEOUS (?)**
- JURASSIC (?) AND LOWER CRETACEOUS (?)**
TANTALUS GROUP (?)
- 19** 19a, chert pebble and cobble conglomerate and sandstone;
19b, conglomerate, shale, sandstone (19b may be early Tertiary)
- JURASSIC LOWER JURASSIC AND LATER LABERGE GROUP**
- 18** Arkose and conglomerate, sandstone, siltstone, argillite
- TRIASSIC UPPER TRIASSIC LEWES RIVER GROUP**
- 17** 17a, limestone; 17b, basaltic and andesitic volcanic rocks, conglomerate, greywacke
- UPPER TRIASSIC OR EARLIER**
- 16** 16a, andesitic and basaltic flows, breccia, tuff, minor rhyolite breccia and argillite; 16b, limestone and limestone conglomerate and breccia (interbedded with 16a; may represent several limestone units)
- MISSISSIPPIAN OR LATER ANVIL RANGE GROUP**
- 15** Andesitic and basaltic flows, breccia, tuff, diorite, slate, phyllite; minor limestone, chert, carbonaceous shale; local quartz-mica schist and lime-silicate rocks
- 14** Serpentine
- EARN GROUP (10-13)**
- 13** Thin-bedded chert, argillite, quartzite, minor limestone
- MISSISSIPPIAN LOWER MISSISSIPPIAN**
- 12** KALZAS FORMATION: limestone, minor argillite, limy argillite, chert
- MISSISSIPPIAN AND/OR EARLIER**
- 11** CRYSTAL PEAK FORMATION: chert pebble and cobble conglomerate and breccia; minor quartzite
- 10** Bedded chert, argillite, quartzite, limestone, chert conglomerate
- 9** 9a, chert pebble and cobble conglomerate, slate, sandstone, greenstone; 9b, greenstone, tuff, cherty argillite, siliceous limestone, chert pebble conglomerate and minor hornfels
- MISSISSIPPIAN (?) OR EARLIER**
- 8** 8a, slate, argillite, quartzite, lime-silicate rocks, chert, limestone, minor greenstone; 8b, limestone
- 7** Dominantly meta-volcanic rocks: 7a, greenstone, greenschist, diorite, quartz-chlorite schist, chert, argillite, limestone; 7b, includes many small bodies of serpentine
- 6** 6a, quartz-hornblende-epidote schist, quartz-chlorite-sericite schist, white sericitic quartzite, quartz-mica schist (locally garnetiferous), greenstone, limestone, lime-silicate rocks; 6b, quartz-mica schist (locally garnetiferous), quartzite, marble, amphibolite; 6c, amphibolite and quartz-mica schist; 6d, argillite, phyllite, cherty quartzite, slaty tuff, greenstone, limestone; 6e, sericitic and chloritic quartzite, locally limy, feldspathic, or epidotic, greenstone, phyllite, limestone; 6f, limestone (probably represents several limestone units)
- SILURIAN (?) AND DEVONIAN (?) ASKIN GROUP (?)**
- 5** 5a, quartzite, dolomitic quartzite, slate, argillite; 5b, dolomite, siliceous dolomite, slaty limestone; interbedded with 5a (may represent two carbonate units)
- CAMBRIAN (?) AND/OR ORDOVICIAN (?) MIDDLE CAMBRIAN (?) AND LATER (?) HARVEY GROUP (2-4)**
- 4** 4a, slate, phyllite, spotted slate, hornfels; 4b, thin-bedded argillite, slaty limestone, minor hornfels
- CAMBRIAN (?) LOWER CAMBRIAN (?)**
- 3** Mainly limestone; phyllite, lime-silicate gneiss, skarn, quartz-biotite schist, slate, hornfels
- LOWER CAMBRIAN (?) OR EARLIER (?)**
- 2** 2a, quartzite and quartz-mica schist, locally garnetiferous; minor amphibolite, lime-silicate rocks, marble (includes small bodies of granitic rocks); 2b, marble, lime-silicate rocks, amphibolite, skarn
- PROTEROZOIC (?)**
- 1** Red, green, grey slate and quartzite

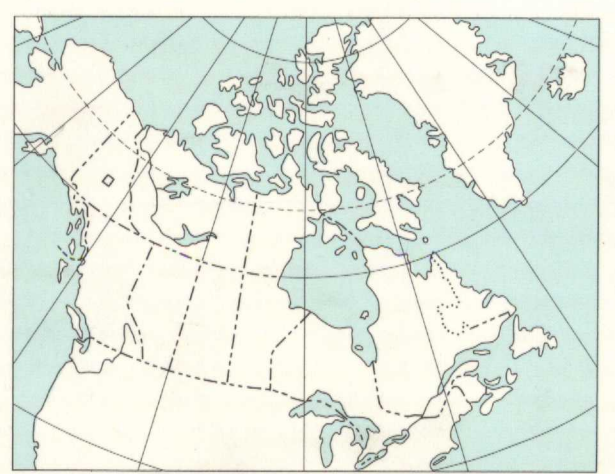
- Geological boundary (defined, approximate, assumed)
- Bedding, tops known (overturned)
- Bedding, tops unknown (inclined, vertical)
- Foliation or schistosity (inclined, vertical)
- Fault (defined, approximate, assumed)
- Anticline (approximate)
- Syncline (approximate)
- Fossil locality
- Mineral occurrence (lead, Pb; zinc, Zn) X Pb, Zn

Geology by R. B. Campbell, 1949-1954 and J. O. Wheeler, 1956
To accompany GSC Memoir 352 by R. B. Campbell
Geological cartography by the Geological Survey of Canada, 1966

1221A
YUKON, GLENLYON
1:253,440
MAP 1221A
1967

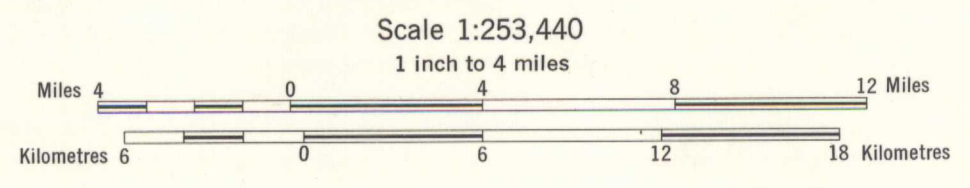


Published 1967, the Centennial of Canadian Confederation



INDEX MAP

MAP 1221A
GEOLOGY
GLENLYON
YUKON TERRITORY



NOT TO BE TAKEN FROM LIBRARY
NE PAS SORTIR DE LA BIBLIOTHÈQUE

REFERENCE

- Trail
- Cabin
- Telephone line
- Intermittent stream
- Marsh
- Sand or gravel
- Contours (interval 500 feet)
- Height in feet above mean sea-level 4870

Base-map compiled and drawn by the Surveys and Mapping Branch, 1951 with revisions by the Geological Survey of Canada

Mean magnetic declination, 32°58' East, decreasing 4" annually. Readings vary from 32°08' in the SW corner to 33°01' in the NE corner of the map-area



1221A