

LEGEND

- CENOZOIC**
- PLEISTOCENE AND RECENT**
- 14 Sand, gravel, silt, glacial erratics
- 13 Diabase dykes and sheets
- 12 Granite Complex: 12a, mainly massive granite, quartz monzonite, granodiorite and related aplite dykes; 12b, coarsely porphyritic rapakivi granite
- 11 Quartz Monzonite - Granodiorite Complex: 11a, mainly quartz monzonite; 11b, mainly granodiorite; 11c, fine-grained aplitic phases
- 10 Intrusive Porphyries: 10a, feldspar-hornblende porphyry; 10b, rhyolite porphyry
- CAMERON BAY GROUP**
- 9a, mainly pebble and cobble conglomerate ferruginous arkose, sandstone, greywacke; 9b, porphyritic andesite tuff, argillite; 9c, as 9a and 9b but may include members from Echo Bay Group
- ECHO BAY GROUP (1-8)**
- UPPER DIVISION (6-8)**
- 7 Metamorphosed andesite and trachyte with gossans and rubble; tuff, amygdaloidal diabase, flow breccia, minor sediments
- 6 Mainly porphyritic and amygdaloidal andesite and trachyte; some tuff, quartzite, argillite, conglomerate, agglomerate
- 8 Undifferentiated Upper Division includes porphyries similar to 10
- 5 Massive crystalline tuff, appears to postdate Lower Division of Echo Bay Group
- LOWER DIVISION**
- 3 Tuff, tuffaceous sediments, breccia, conglomerate, arkose
- 4 Undifferentiated Lower Division
- 2 Porphyritic and amygdaloidal andesite and trachyte, fragmental volcanics
- 1 Banded calcareous and cherty argillite, chert, bedded tuff, quartzite, thin limy beds, conglomerate, agglomerate

- Geological boundary (defined, approximate) + / +
- Bedding (horizontal, inclined, vertical) / / /
- Fault or shear zone (defined, approximate) - - - - -
- Quartz stock work [Symbol]
- Esker (direction of flow unknown) [Symbol]
- Trench [Symbol]
- Mine (abandoned) [Symbol]
- Mineral occurrence X U
- Shaft, winze [Symbol]
- Adit [Symbol]
- Gossan [Symbol]

MINERALS

CopperCu	SilverAg
ManganeseMn	UraniumU

Compiled by G. Mursky from unpublished geological maps by J.D. Bateman and A.W. Jolliffe (1944), J.B. Thurber (1946), M. Feniak (1947), Y.O. Fortier (1948), D.D. Campbell (1955), G. Mursky (1963), geological maps and reports Eldorado Nuclear Limited (1944-1960) and from published geological maps by C. Riley (1935) and G.M. Furnival (1939).

To accompany GSC Memoir 374 by G. Mursky

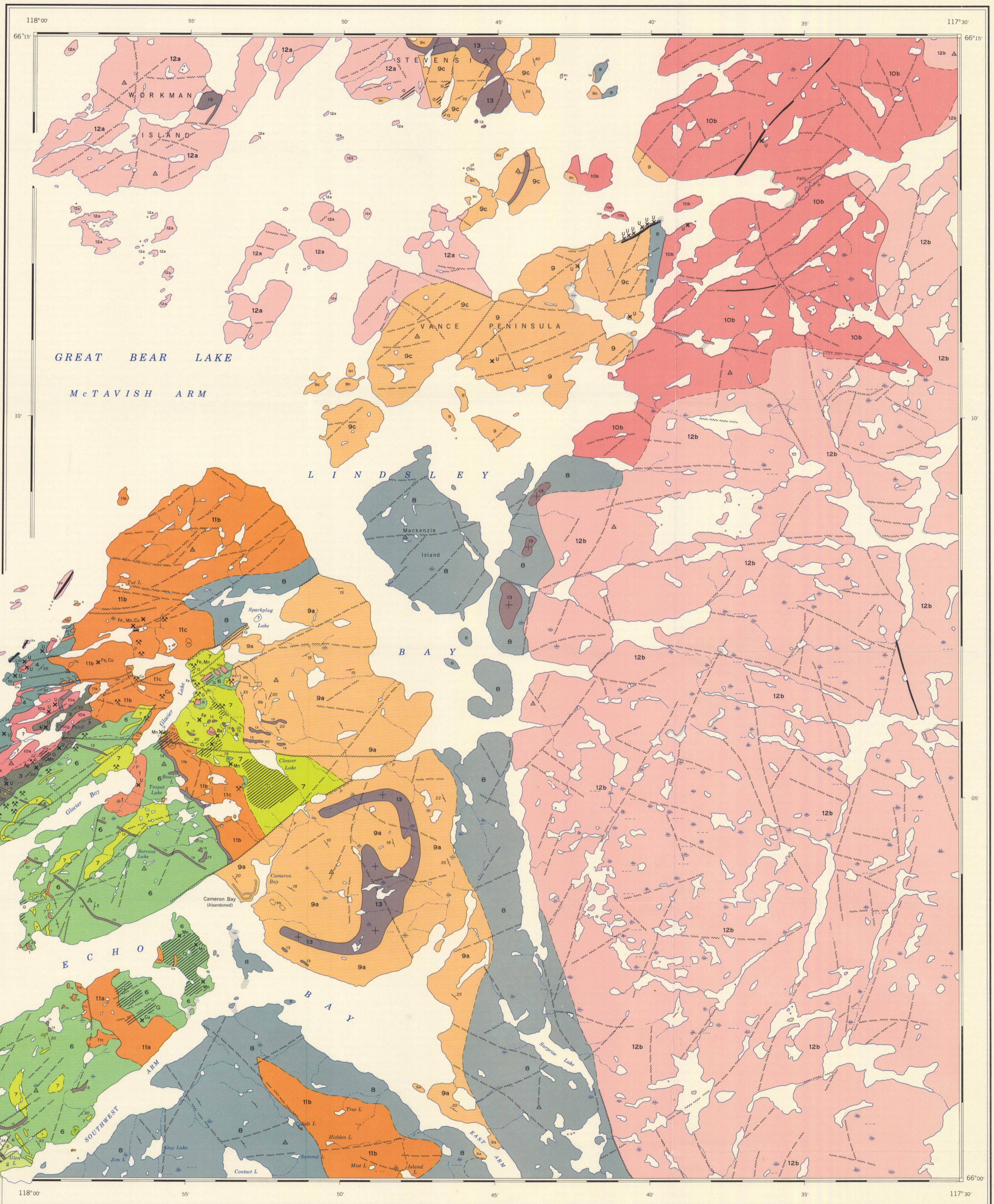
Geological cartography by the Geological Survey of Canada

Any revisions or additional geological information known to the user would be welcomed by the Geological Survey of Canada

- Road [Symbol]
- Trail or Portage [Symbol]
- Horizontal control point [Symbol]
- Intermittent stream [Symbol]
- Lake, intermittent [Symbol]
- Sand bar [Symbol]
- Reef or small island [Symbol]
- Marsh or swamp [Symbol]

Base-map cartography by the Geological Survey of Canada, 1972 from map published at 1:63,360 scale by the Surveys and Mapping Branch in 1949.

Approximate magnetic declination 1972, 38°52', decreasing 9.2' annually



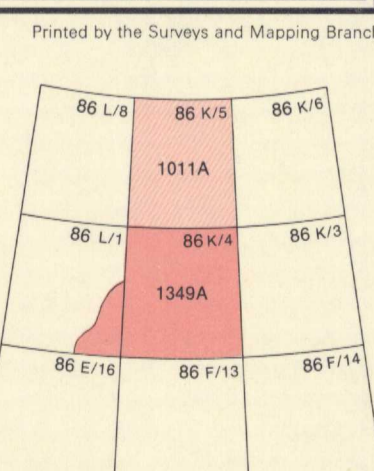
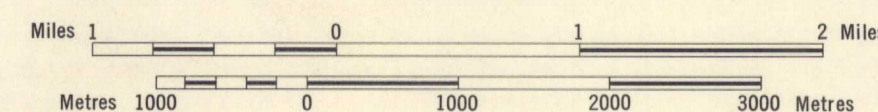
Published 1973
Copies of this map may be obtained from the Geological Survey of Canada, Ottawa



INDEX MAP

MAP 1349A
GEOLOGY
PORT RADIUM
DISTRICT OF MACKENZIE

Scale 1:50,000



Printed by the Surveys and Mapping Branch

NOT TO BE TAKEN FROM LIBRARY
NB PAS SORTIR DE LA BIBLIOTHÈQUE

NATIONAL TOPOGRAPHIC SYSTEM REFERENCE AND INDEX TO GEOLOGICAL SURVEY OF CANADA MAPS

PORT RADIUM
DISTRICT OF MACKENZIE

1349A