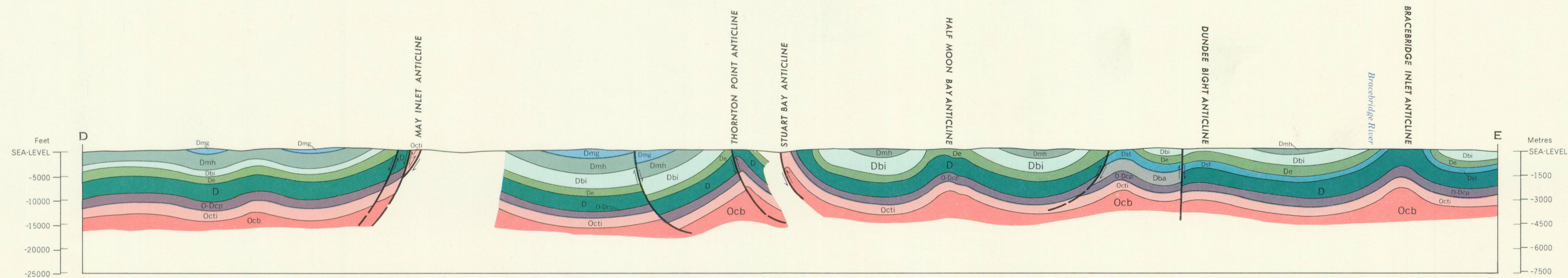
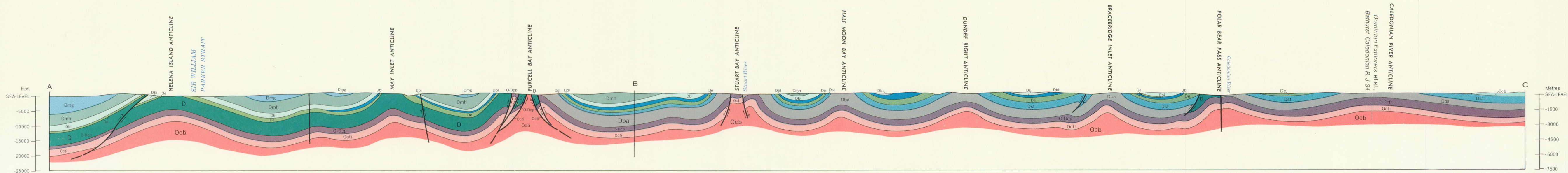


GEOLOGICAL SURVEY OF CANADA
DEPARTMENT OF ENERGY, MINES AND RESOURCES

This document was produced
by scanning the original publication.
Ce document est le produit d'une
numérisation par balayage
de la publication originale.



Diagrammatic structure cross-sections A-B-C, and D-E to accompany Map 1350A, Bathurst Island Group and Byam Martin Island

Scale 1:250,000

Printed by the Surveys and Mapping Branch, 1973

BATHURST ISLAND GROUP
AND BYAM MARTIN ISLAND
STRUCTURE SECTIONS