

LEGEND

M
Moyie formation
thin to thick bedded shales, metargillites and quartzites; white, grey, blackish, greenish & purplish

G
Gateway formation
chiefly thin bedded, siliceous metargillites; some dolomite at base. (Equivalent of lower part of Moyie formation.)

Pu
Purcell lava
massive basic flows

Kt
Kitchener formation
thin to thick bedded greenish-grey quartzite and metargillite; somewhat dolomitic in places

Si
Siyeh formation
thin to thick bedded, greenish-grey metargillite with massive, siliceous, magnesian limestones. (Equivalent to up Kitchener formation.)

W
Wigwam formation
thin to thick bedded, red sandstone and metargillite (Equivalent of lower part of Kitchener formation.)

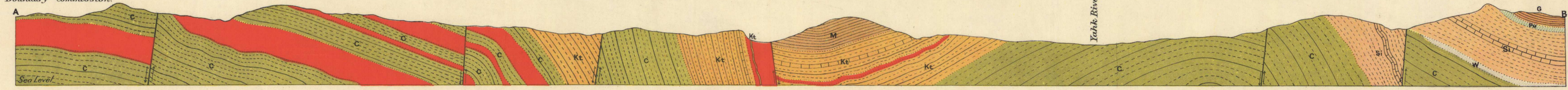
C
Creston formation
generally thick bedded, grey quartzite and metargillite; sometimes dolomitic

Intrusive
Abnormal hornblende gabbro

Symbols
Geological boundary
Fault
Glacial striae

Topography from surveys made by the Boundary Commission.

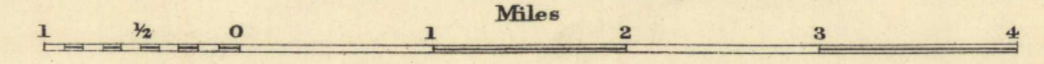
Note. Localities of chemically analyzed rocks, shown thus, + 1164



Section on line AB

GEOLOGY OF THE FORTY-NINTH PARALLEL, By R.A. Daly.

Scale: 62500 - 0.9864 Statute Miles to 1 Inch



Contour interval, 100 feet

NOT TO BE TAKEN FROM LIBRARY
NE PAS SORTIR DE LA BIBLIOTHÈQUE

77A

MAP 77A

Reprinted by permission of Chief Astronomer, to accompany Geological Survey Memoir No. 38