

LOWER CAMBRIAN & BELTIAN MIDCAMBRIAN RECENT
BELTIAN
PRE-BELTIAN PRIEST RIVER TERRANE
JURASSIC TERTIARY
CAMBRIAN

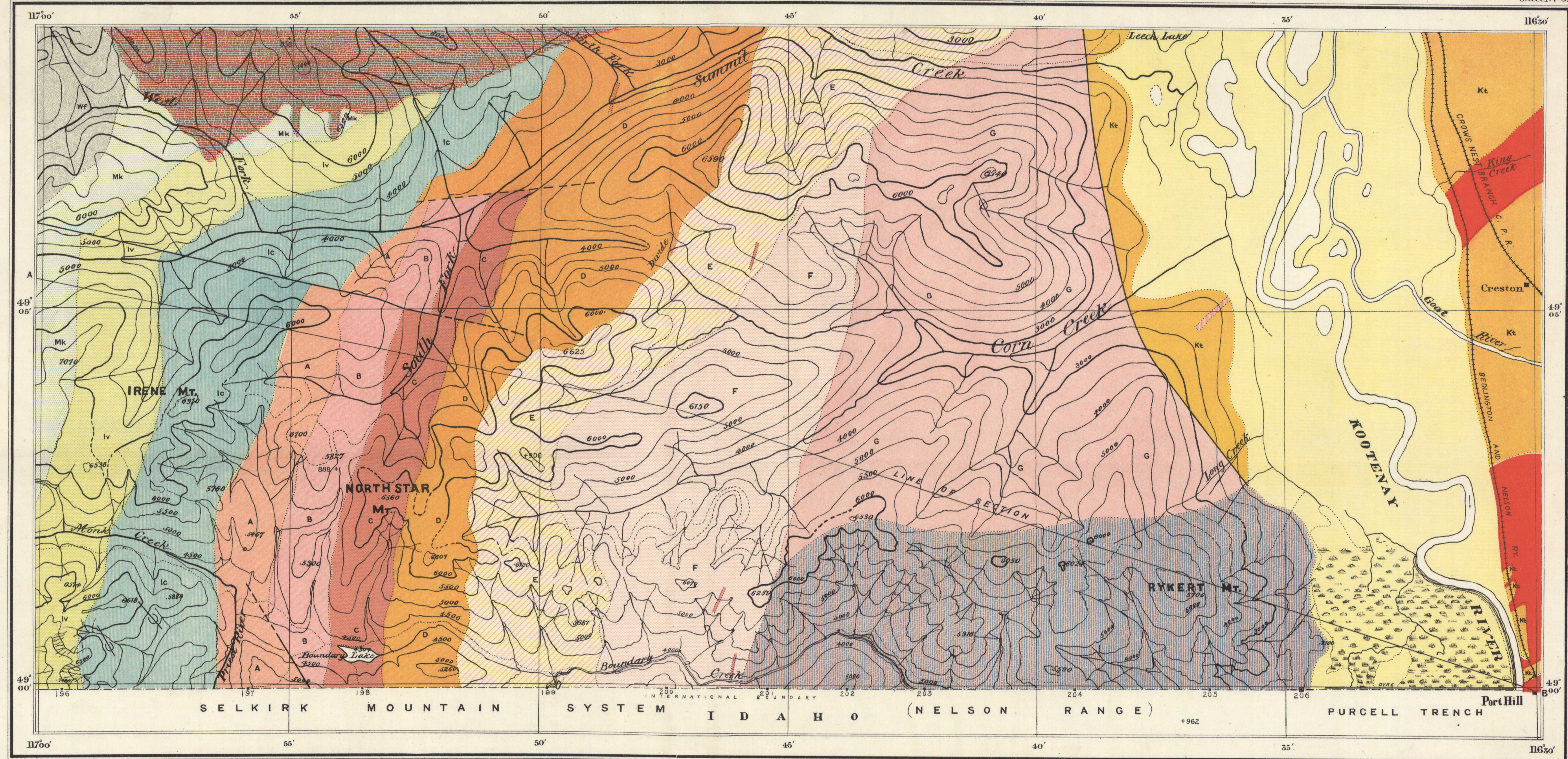
LEGEND

- Aluvium
- Kt Kitchener formation greenish-grey quartzite
- Wf Wolf formation massive grey gneiss and arkose in very thick beds; suborbate sandstone
- Mk Monk formation alternating phyllites and metamorphosed (schistes) grits, sandstones and conglomerates; grey colours.
- Iv Irene volcanic formation thick flows of pyroclastic andesites, with some pyroclastics and a massive interbed of magnesian limestone
- Ic Irene conglomerate massive, greatly sheared, thin sandstone lenses
- A mica schists, quartzites and dolomites
- B dolomites, quartzite and phyllite
- C phyllites and sericite-quartz schist
- D sheared, massive quartzite, with sericite and chlorite schist
- E sericite schist, spangled with large biotite crystals
- F schistose quartzite and mica schist
- G glittering mica schists and sheared quartzite
- Intrusive
 - Bayoune batholith basic granodiorite
 - Rykert batholith sheared, porphyritic biotite (muscovite) granite
 - Abnormal hornblende granite probably a sill
 - Abnormal hornblende gabbro sills in Kitchener formation
 - Greenstone dikes and sheets in the Priest River terrane

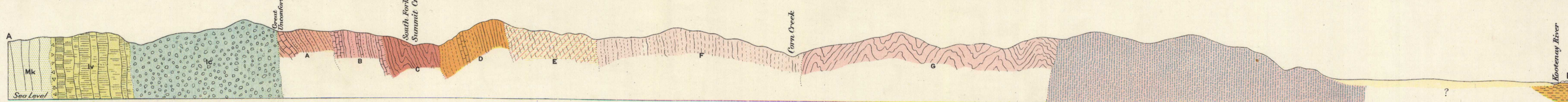
Symbols

- Geological boundary
- Fault
- Glacial striae

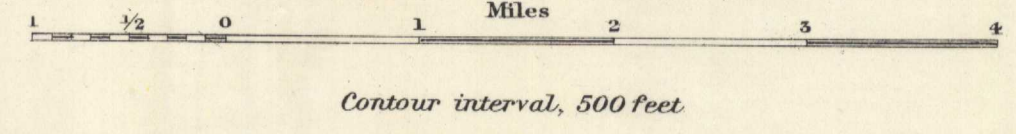
Note. Structure of Pre-Beltian series shown on section, merely diagrammatic. Localities of chemically analyzed rocks, shown thus: +900



Topography from surveys made by the Boundary Commission.



Section along line A B
 GEOLOGY OF THE FORTY-NINTH PARALLEL, By R.A. Daly.
 Scale: 62500 = 0.9864 Statute Miles to 1 Inch



NOT TO BE TAKEN FROM LIBRARY
NE PAS SORTIR DE LA BIBLIOTHÈQUE



MAP 79A 79A

Reprinted by permission of Chief Astronomer, to accompany Geological Survey Memoir No. 38