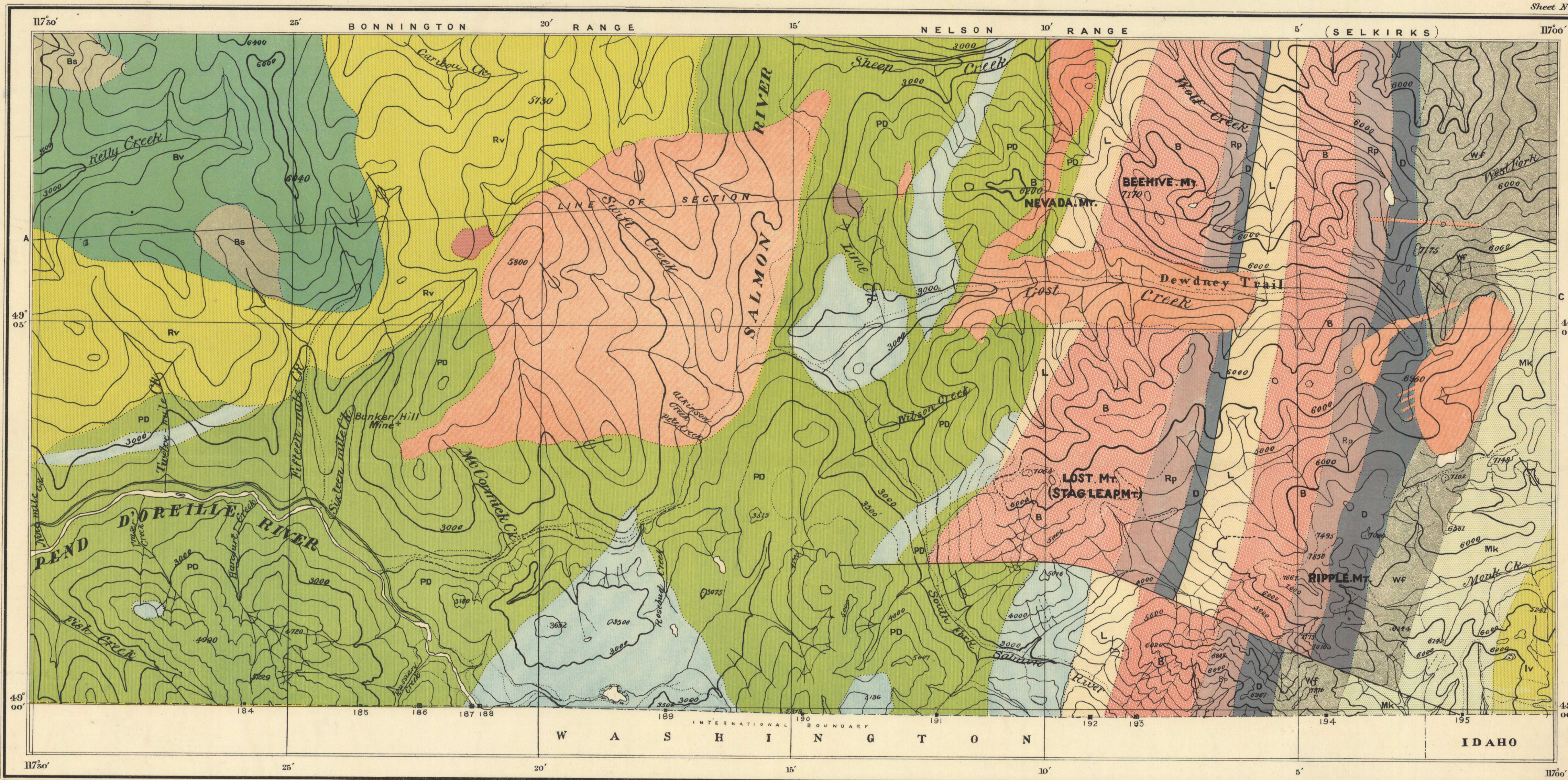


LEGEND

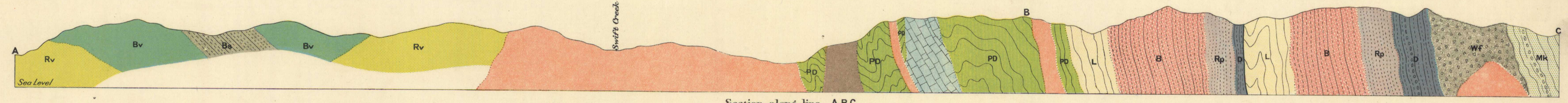
- TERTIARY**
  - CARBONIFEROUS**
  - CARBONIFEROUS**
  - CARBONIFEROUS**
  - MIDDLE CAMBRIAN**
  - LOWER CAMBRIAN & BELTIAN**
  - BELTIAN**
  - TERTIARY**
- Bs** Beaver Mountain sediments
  - Bv** Beaver Mountain volcanics
  - Rv** Rossland volcanic formation  
flows and pyroclastic deposits of andesite and basalt
  - PD** Pend D'Oreille limestone  
white to bluish, massive marbles
  - PD** Pend D'Oreille schist  
carbonaceous phyllite with quartzitic and amphibolite interbeds
  - L** Lone Star formation  
dark grey, carbonaceous phyllite with quartz schist and quartzite
  - B** Beehive formation  
banded quartzite, with thin interbeds of metargillite
  - Rp** Ripple formation  
massive, white quartzite
  - D** Dewdney formation  
banded quartzite, with conglomerate interbeds
  - WF** Wolf formation  
massive grey arg. and arkose in very thick beds; subordinate sandstone
  - Mk** Monk formation  
alternating phyllites and metamorphosed (schistose) gneiss, sandstones, and conglomerates; grey colours.
  - Iv** Irene volcanic formation  
thick flows of pyroxene andesites, with some pyroclastics
  - Intrusive**
  - Salmon river monzonite stock**
  - Granite**  
satellite to Bayanone batholith
  - Olivine syenite**  
stock(s)
  - Symbols**
  - Geological boundary**
  - Fault**
  - Glacial striae**



Topography from surveys made by the Boundary Commission.

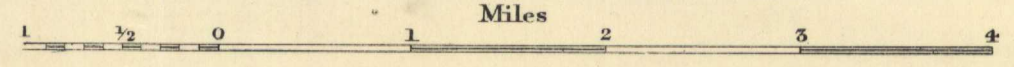
Note: Somewhat numerous, though narrow dikes of minette, cutting the schists in the Bend D'Oreille valleys are not shown.

Note: Localities of chemically analysed rocks, shown thus, + 666



Section along line ABC  
**GEOLOGY OF THE FORTY-NINTH PARALLEL, By R.A. Daly.**

Scale: 62500 = 0.9864 Statute Miles to 1 Inch



Contour interval, 500 feet

NOT TO BE TAKEN FROM LIBRARY  
 NE PAS SORTIR DE LA BIBLIOTHÈQUE



MAP 80A **80A**  
 Reprinted by permission of Chief Astronomer, to accompany Geological Survey Memoir No. 38