

LEGEND

CARBONIFEROUS TO CRETACEOUS(?)

CARBONIFEROUS PALAEOZOIC(?)

MIOCENE(?)

Eocene(?)

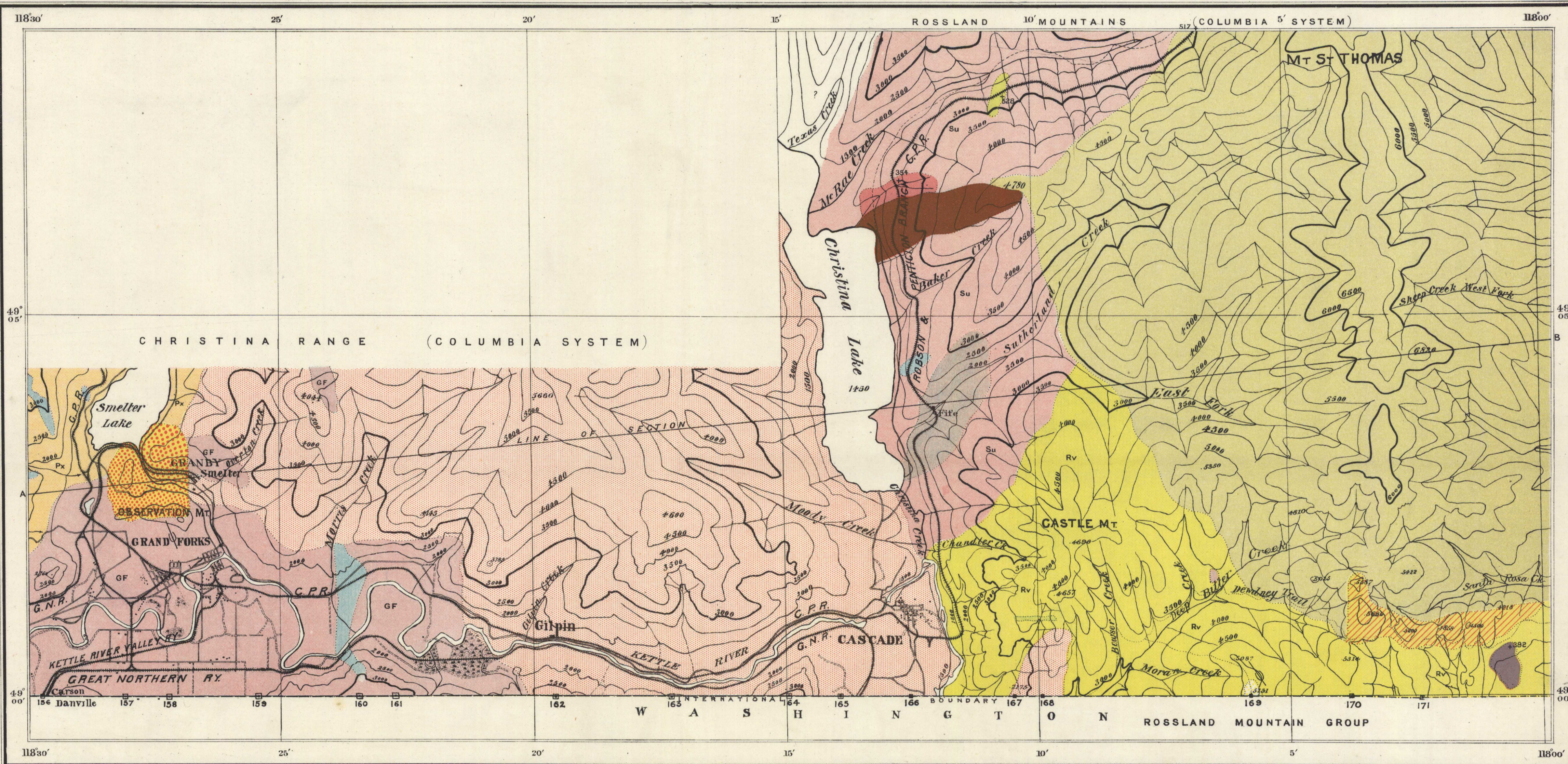
CRETACEOUS(?)

JURASSIC(?)

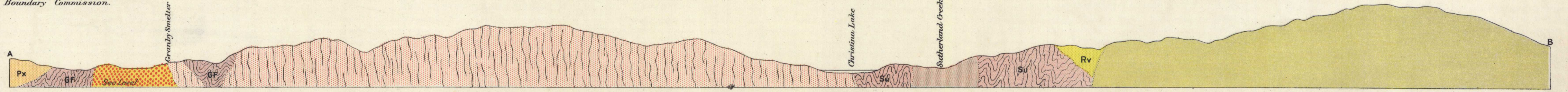
- Conglomerate
- Phoenix volcanic formation
Flows and pyroclastic deposits of andesite, etc.
- Rossland volcanic formation
Flows and pyroclastic deposits of lavas, andesites and basalt.
- Sutherland schists
phyllite, garnetiferous, epidote and actinolitic schists, etc.
- Limestone
white to bluish marble
- Grand Forks schists
amphibolite, hornblende schists, etc.
- Intrusive**
- Coryell batholith
hornblende-biotite syenite (ulaskite)
- Syenite porphyry
peripheral (sanger) phase of Coryell batholith.
- Olivine syenite
- Harzburgite
- Bitter Creek peridotite
- Fife gabbro
- Baker gabbro
- Dunite
- Smelter stock
epidote granite
- Cascade batholith
garnetiferous biotite granite, actinolitic stock south of Castle Mountain.

- Symbols**
- Geological boundary
- Glacial striae

Note. Folded structure of Sutherland and Grand Forks schists, in section, merely diagrammatic. Many apophyseal dikes from large intrusive masses not shown. Localities of chemically analysed rocks, shown thus. + 517



Topography from surveys made by the Boundary Commission.



Section along line AB
GEOLOGY OF THE FORTY-NINTH PARALLEL, By R.A. Daly.

Scale: 42700 - 09864 Statute Miles to 1 Inch
Miles 1 2 3 4

Contour interval, 500 feet

NOT TO BE TAKEN FROM LIBRARY
NE PAS SORTIR DE LA BIBLIOTHEQUE

MAP 82A 82A
Reprinted by permission of Chief Astronomer, to accompany Geological Survey Memoir No 38

