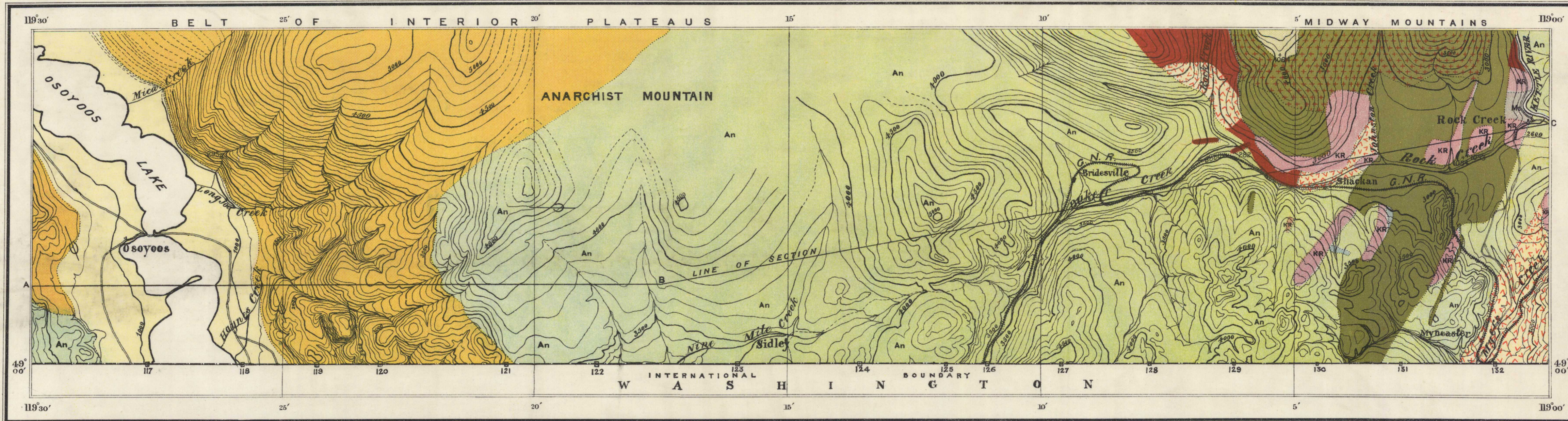


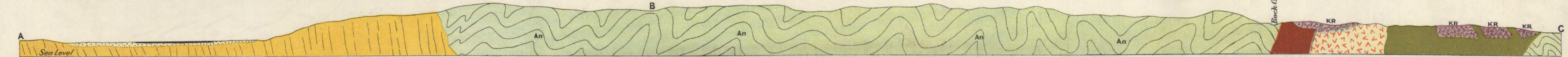
- LEGEND**
- PLEISTOCENE & RECENT
 - Glacial drift and alluvium
 - MIOCENE
 - Shackanite
Flows (part of Midway volcanic group)
 - Extrusive rhomb-porphry
flows (part of Midway volcanic group)
 - OLIGOCENE
 - KR
Kettle river formation
sandstone, conglomerate, shale, arkose
 - CARBONIFEROUS
 - Limestone of Anarchist series
white to bluish-grey, crystalline
 - UPPER PALAEOZOIC
 - An
Anarchist series
quartzite, phyllitic slates, greenstones,
with limestone pods.
 - MIOCENE
 - Intrusive
 - Intrusive rhomb-porphry
chamoliths and dikes
 - JURASSIC
 - Granodiorite
 - Osoyoos batholith
gneissic derivative of granodiorite
 - Diorite and gabbro
 - LATE PALAEOZOIC
 - Dunite

- Symbols**
- Geological boundary
 - Glacial striae

Note: Structures of Anarchist series, shown in the section, merely diagrammatic.
Localities of chemically analyzed rocks, shown thus, +295

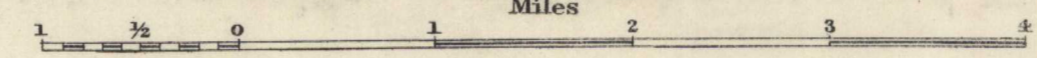


Topography from surveys made by the Boundary Commission.



Section along line ABC
GEOLOGY OF THE FORTY-NINTH PARALLEL, By R.A. Daly.

Scale: 62500 - 09864 Statute Miles to Inch



Contour interval, 100 feet

NOT TO BE TAKEN FROM LIBRARY
 NE PAS SORTIR DE LA BIBLIOTHÈQUE



84A

MAP 84A

Reprinted by permission of Chief Astronomer,
 to accompany Geological Survey Memoir No. 38