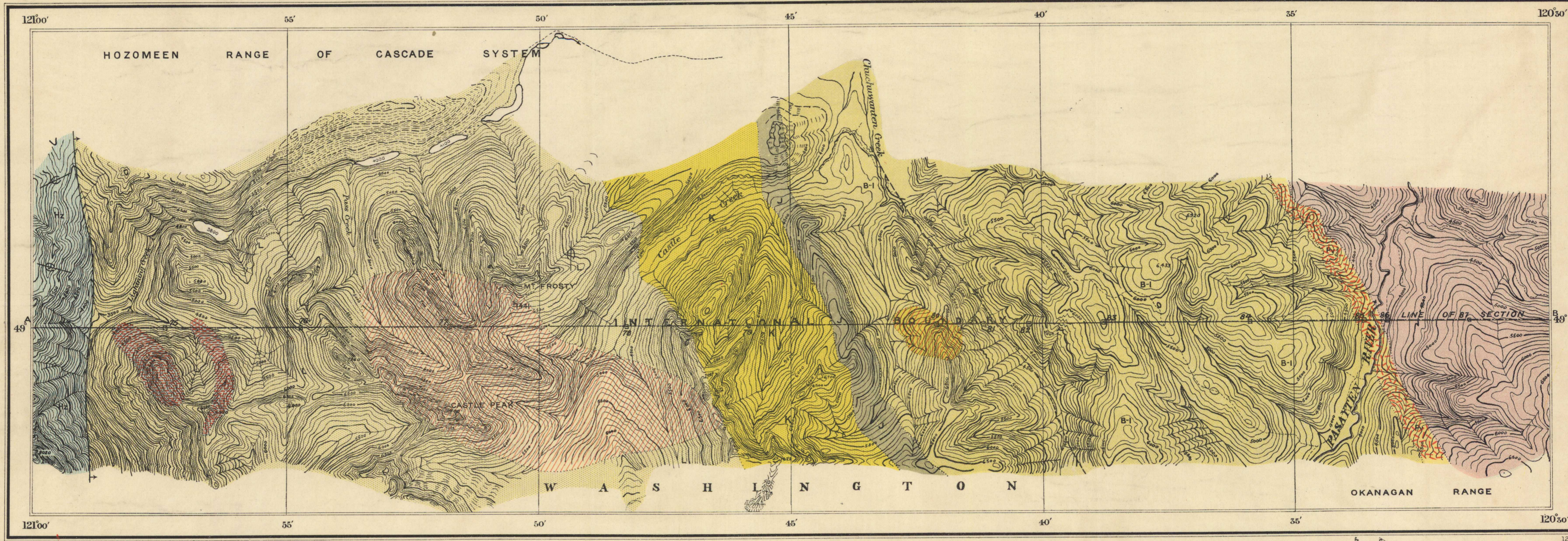


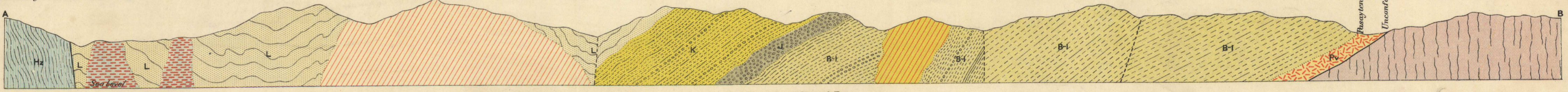
LEGEND

- CRETACEOUS (SHASTA-CHICO) Pasayten series
 - L Member L black argillite
 - K Member K green and grey sandstone with interbeds of shale and conglomerate
 - J Member J coarse conglomerate
 - B-1 Members B-1 arkose and sandstone chiefly with conglomerate and shale
 - Pv Pasayten volcanic formation andesitic breccia
- CARBONIFEROUS CRETACEOUS
 - Hs Hozomeen series greenstone, cherty quartzite & limestone pods
- INTRUSIVE
 - Syenite porphyry chonolith
 - Castle Mountain stock granodiorite
 - Lightning Creek stocks diorite
 - Rommel batholith western phase, sheared granodiorite
- MIOCENE (?)
 - Symbols
- JURASSIC (?)
 - Geological boundary
 - Fault
 - Glacial striae



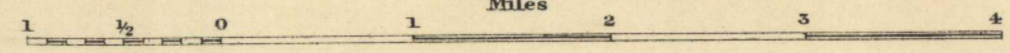
Note. Structure of Hozomeen series, shown in section, merely diagrammatic. Localities of chemically analyzed rocks, shown thus, +1441

Topography from surveys made by the Boundary Commission.



Section along line AB
GEOLOGY OF THE FORTY-NINTH PARALLEL, By R.A. Daly.

Scale: 62500 - 0.9864 Statute Miles to 1 Inch



Contour interval, 100 feet



MAP 87A

87A

NOT TO BE TAKEN FROM LIBRARY
 NE PAS SORTIR DE LA BIBLIOTHEQUE

Reprinted by permission of Chief Astronomer, to accompany Geological Survey Memoir No. 38