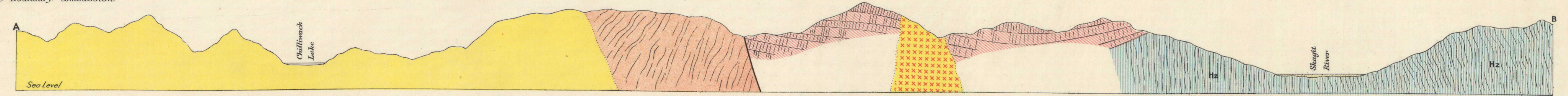


- LEGEND**
- PLEISTOCENE & RECENT**
 - Glacial drift and alluvium
 - OLIGOCENE (?)**
 - Skagit volcanic formation
triarite ash
 - Skagit volcanic formation
andesite flows and pyroclastic deposits
 - CARBONIFEROUS CARBONIFEROUS**
 - Ch
Chilliwack series
locally argillite and sandstone
 - Hs
Hozomeen series
cherty quartzite, gneiss, phyllite, and limestone pods
 - INTRUSIVE**
 - Chilliwack batholith
granodiorite
 - granite at Skagit River
 - Monzonite
stock and dikes
 - Harsburgite
 - Custer granite gneiss
sheared granodiorite
 - SYMBOLS**
 - Geological boundary
 - Fault
 - Glacial striae

Note. Structure of Hozengeen series shown in section, merely diagrammatic. Localities of chemically analyzed rocks shown thus: 47

Topography from surveys made by the Boundary Commission.



Section along line A B
GEOLOGY OF THE FORTY-NINTH PARALLEL, By R.A. Daly.

Scale: 62500-09864 Statute Miles to 1 Inch
Miles 1 2 3 4

Contour interval, 100 feet

NOT TO BE TAKEN FROM LIBRARY
NE PAS SORTIR DE LA BIBLIOTHÈQUE

MAP 88A
88A
Reprinted by permission of Chief Astronomer, to accompany Geological Survey Memoir No. 38