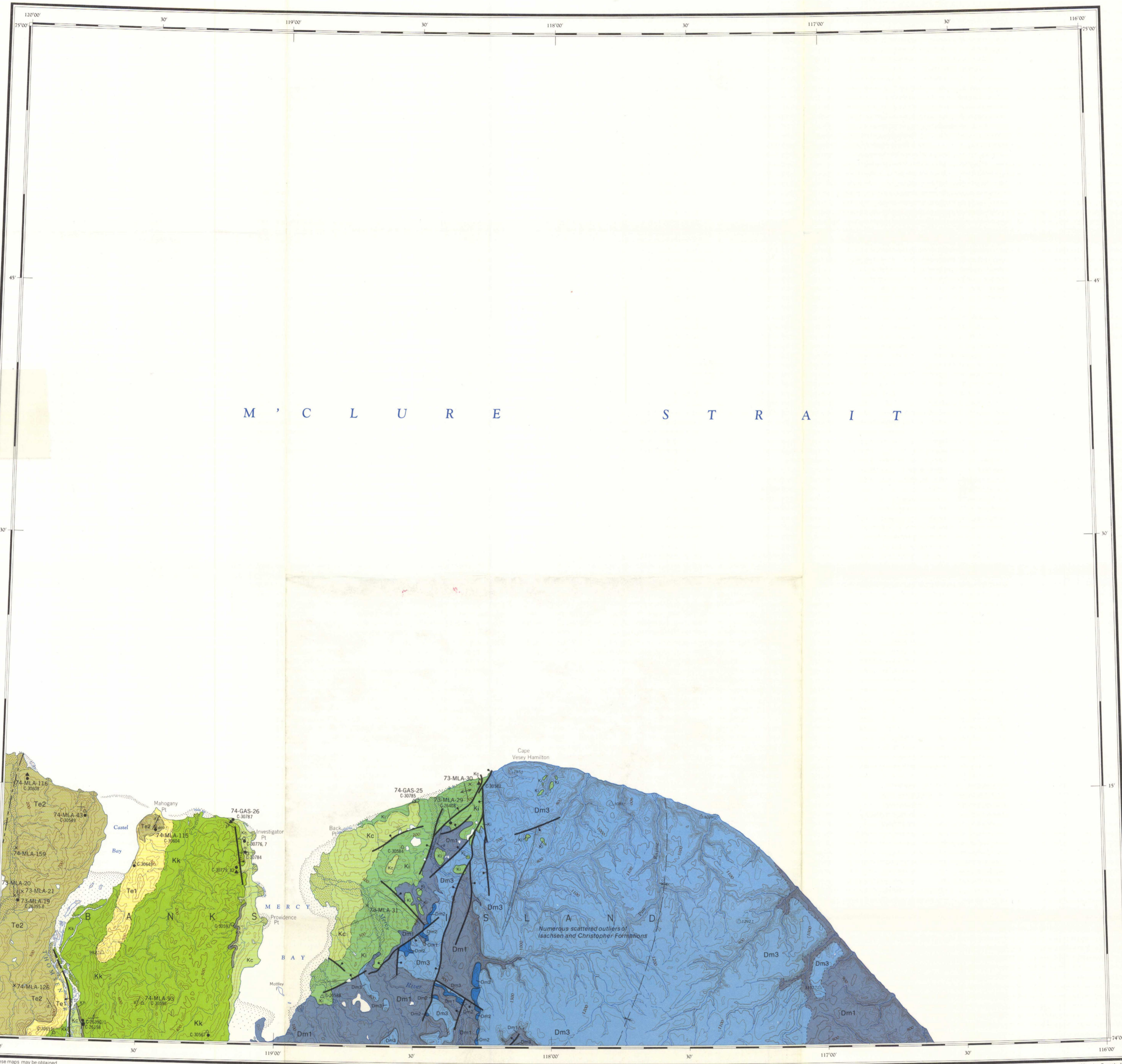




GEOLOGICAL SURVEY OF CANADA
DEPARTMENT OF ENERGY, MINES AND RESOURCES

MERCURY STRAIT



LEGEND

- TERTIARY**
 - MIOCENE**
 - Tb** BEAUFORT FORMATION: unconsolidated gravel, sand, clay
 - PALEOCENE-EOCENE**
 - Te2** EUREKA SOUND FORMATION: Cyclic member; sand, sandstone, siltstone, shale, coal
 - PALEOCENE**
 - Te1** EUREKA SOUND FORMATION: Shale member; shale, siltstone
- CRETACEOUS**
 - UPPER CRETACEOUS**
 - Kks** KANGUK FORMATION: Upper sand member; unconsolidated sand
 - Kk** KANGUK FORMATION: shale, siltstone; basal bituminous member with bentonite beds
 - LOWER CRETACEOUS**
 - Kh** HASSEL FORMATION: unconsolidated sand; minor silt, clay
 - Kc** CHRISTOPHER FORMATION: shale, minor sand
 - Ki** ISACHSEN FORMATION: sand, locally pebbly, minor siltstone, shale, coal
- DEVONIAN**
 - UPPER DEVONIAN**
 - MELVILLE ISLAND GROUP
 - Dm3** Upper map-unit: sandstone, siltstone, shale, coal
 - Dm2** Mercy Bay Member: biohermal and biostromal limestone
 - Dm1** Lower map-unit: sandstone, siltstone, shale, minor coal

- Geological boundary (defined, approximate, assumed)
- Approximate contact Eocene-Paleocene
- Bedding, tops known (horizontal, inclined)
- Lineament (from air photographs)
- Fault (defined, approximate)
- Fault (solid circle indicates downthrow side, arrows indicate relative movement)
- Anticline (defined)
- Syncline (defined, assumed; arrow indicates plunge)
- Fossil locality (GSC catalogue number)
- Stratigraphic sections studied by A. D. Miall, MLA,
 - A. S. Greene, GAS, with section number 74-MLA-104x
 - Elf Oil Exploration and Production Canada Limited field samples 74-25
 - Elf Oil seismic shot-hole samples (mainly from 90 ft depth) 8K67-217

Geology by A. D. Miall, 1973 and 1974. Devonian geology south and east of Mercy Bay by J. E. Klovan and A. F. Embry III, 1969 (Bull. Can. Petrol. Geol., 1971, v. 19, p. 705-781)

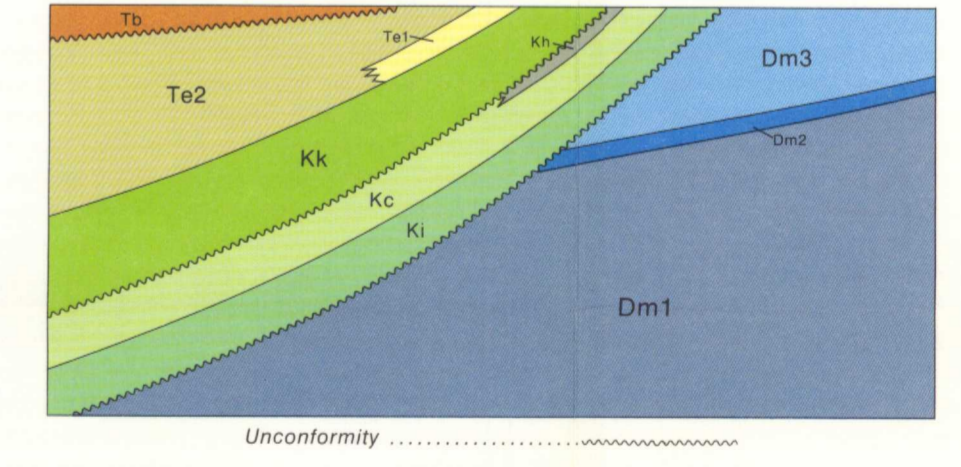
Compilation by A. D. Miall, 1975

To accompany GSC Memoir 387 by A. D. Miall

BIOSTRATIGRAPHIC CONTROL

- Palynology sample (series or stage assignment, indefinite)
- Micropaleontology sample (series or stage assignment, indefinite)
- Macropaleontology sample (series or stage assignment, indefinite)

SCHEMATIC STRATIGRAPHIC RELATIONSHIPS



Geological cartography by D. J. Walter, Institute of Sedimentary and Petroleum Geology, Geological Survey of Canada

Any revisions or additional geological information known to the user would be welcomed by the Geological Survey of Canada

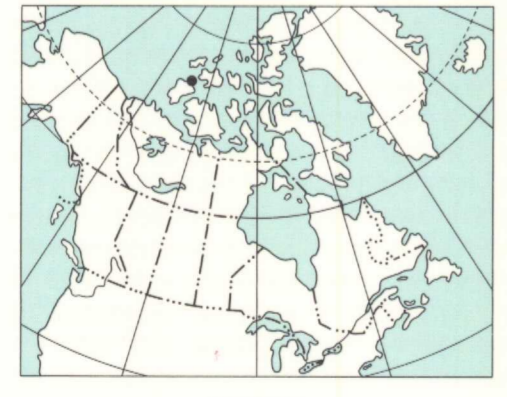
Base-maps at the same scale published by the Army Survey Establishment R.C.E. 1966

Copies of the topographical edition of this map may be obtained from the Canada Map Office, 615 Booth Street, Ottawa, Ontario K1A 0E9

The daily change of the North Magnetic Pole causes the magnetic compass to be very erratic in this area
Magnetic declination 1977 varies from 54° 43' easterly at centre of west edge to 57° 16' easterly at centre of east edge. Mean annual change 17.3' westerly

Elevation in feet above mean sea level

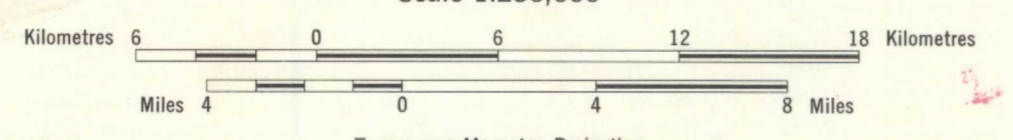
Copies of these maps may be obtained from the Geological Survey of Canada, 601 Booth Street, Ottawa, Ontario K1A 0E8, 3303 - 33rd Street N.W., Calgary, Alberta T2L 2A7



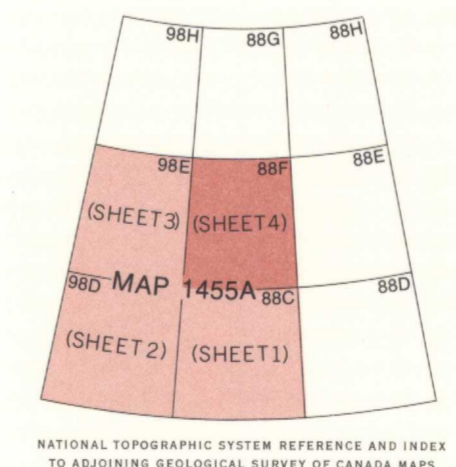
LIBRARY / BIBLIOTHÈQUE
OCT 21 1980
GEOLOGICAL SURVEY OF CANADA
COMMISSION GÉOLOGIQUE

MAP 1455A GEOLOGY MERCY BAY (SHEET 4) DISTRICT OF FRANKLIN

Scale 1:250,000



Transverse Mercator Projection
© Crown Copyrights reserved



NATIONAL TOPOGRAPHIC SYSTEM REFERENCE AND INDEX TO ADJOINING GEOLOGICAL SURVEY OF CANADA MAPS

MAP LIBRARY / CARTOTHEQUE

NOT TO BE TAKEN FROM LIBRARY
NE PAS SORTIR DE LA BIBLIOTHÈQUE

MAP 1455A
MERCY BAY
(SHEET 4)
DISTRICT OF FRANKLIN
1455A 4 of 4