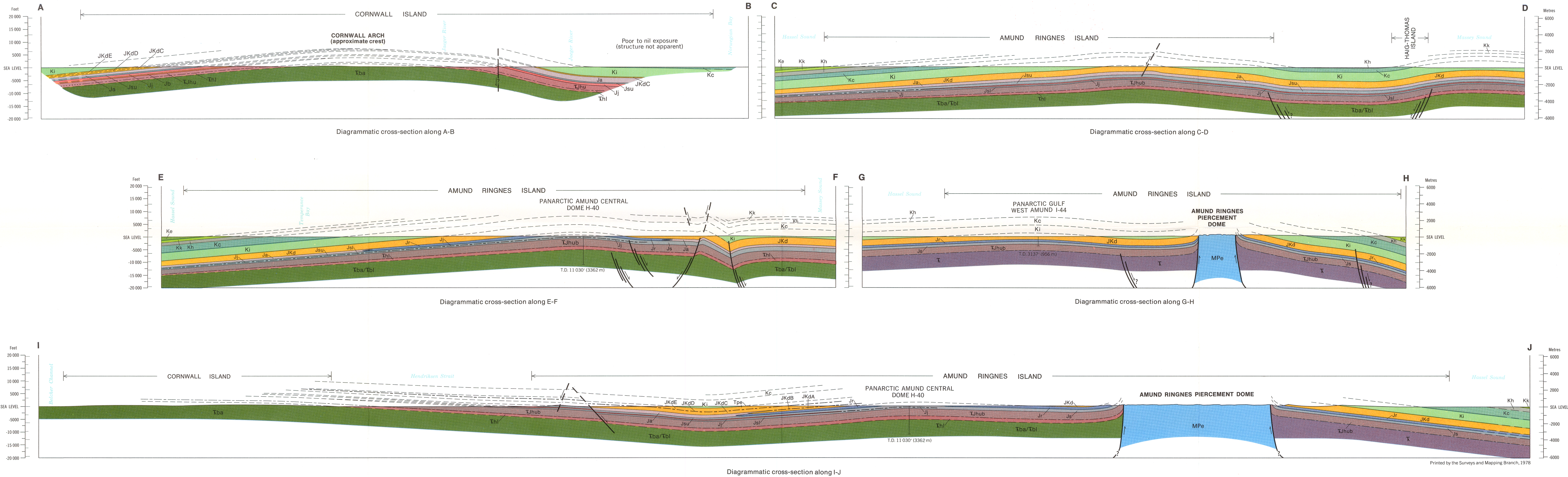




GEOLOGICAL SURVEY OF CANADA
DEPARTMENT OF ENERGY, MINES AND RESOURCES



Geological compilation by H.R. Balkwill, 1976
To accompany GSC Memoir 390 by H.R. Balkwill

Geological cartography by J.H. Waddell, Institute of
Sedimentary and Petroleum Geology, Geological Survey of Canada

Figure 4. Diagrammatic structure sections A-B, C-D, E-F, G-H, and I-J to accompany Map 1471A, Amund Ringnes, Cornwall and Haig-Thomas Islands

Figure 4

This document was produced by scanning the original publication.
Ce document est le produit d'une numérisation par balayage de la publication originale.