

Figure 5 Cretaceous and Tertiary Stratigraphic Cross-Section, B-B', Peel Trough to Great Bear Basin

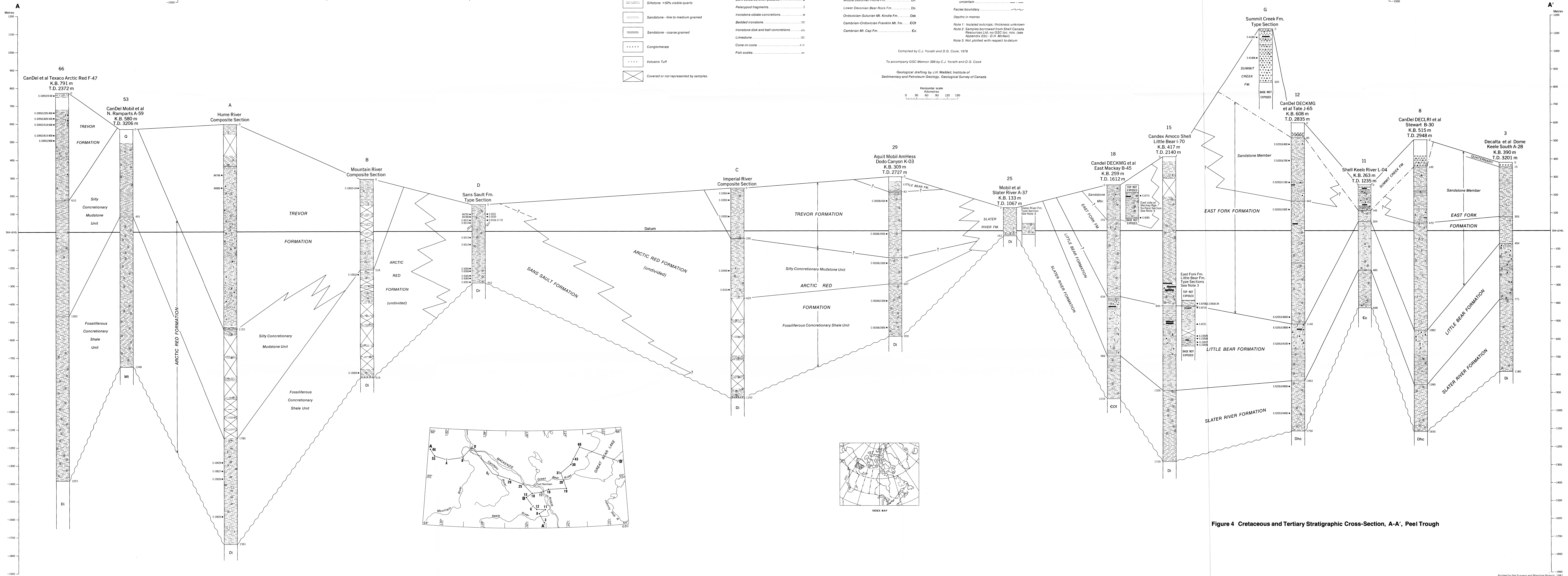


Figure 4 Cretaceous and Tertiary Stratigraphic Cross-Section, A-A', Peel Trough

Coal	Algalicious	Quaternary	Fault (arrow indicates relative movement)
Shale < 5% visible quartz	Bentonitic	Mississippian Tuttle Fm.	Fossil collections
Mudstone 5% to 50% visible quartz	Calcareous	Upper Devonian Imperial Fm.	Formation contact - conformable
Siltstone > 50% visible quartz	Fertile	Middle Devonian Ramparts Fm.	Formation contact - unconformable
Sandstone - fine to medium grained	Light coloured chert pebbles	Mobile Upper Devonian Hereford and Canal Formations (undivided)	Contact relationship uncertain
Sandstone - coarse grained	Dark coloured chert pebbles	Middle Devonian Hume Fm.	Facies boundary
Conglomerate	Peleypod fragments	Lower Devonian Bear Rock Fm.	Depth in metres
Volcanic Tuff	Ironstone oolite concretions	Ordoevian-Sulairan Mt. Kindle Fm.	Note 1: Isolated outcrop, thickness unknown
Covered or not represented by samples	Banded ironstone	Carboniferous-Franklin Mt. Fm.	Note 2: Samples borrowed from Shell Canada
	Ironstone disk and ball concretions	Cambrian Mt. Cap Fm.	Note 3: Not plotted with respect to datum
	Limestone		
	Cone-in-cone		
	Fish scales		