

LEGEND

	Shale	Green	G (G)
	Black shale	Purple	P (P)
	Siltstone	Red	R (R)
	Sandstone	Yellow	Y (Y)
	Conglomerate sandstone	Brown	B (B)
	Limestone		
	Dolomite		
	Pale chert		
	Dark chert		
	Silicified (argillite, orthoquartzite etc.)		
	Black argillite		
	No sample available		
	Samples not described		

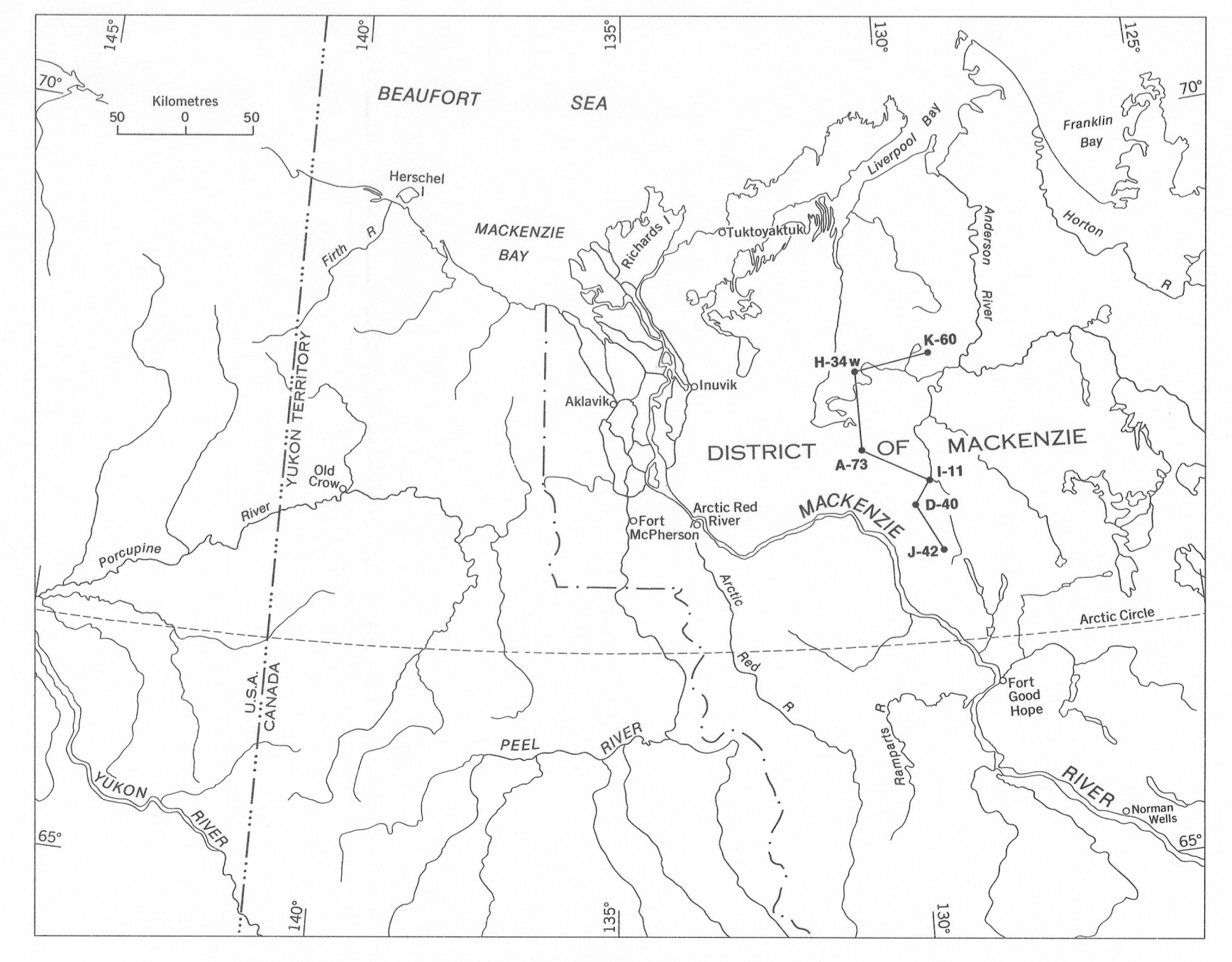
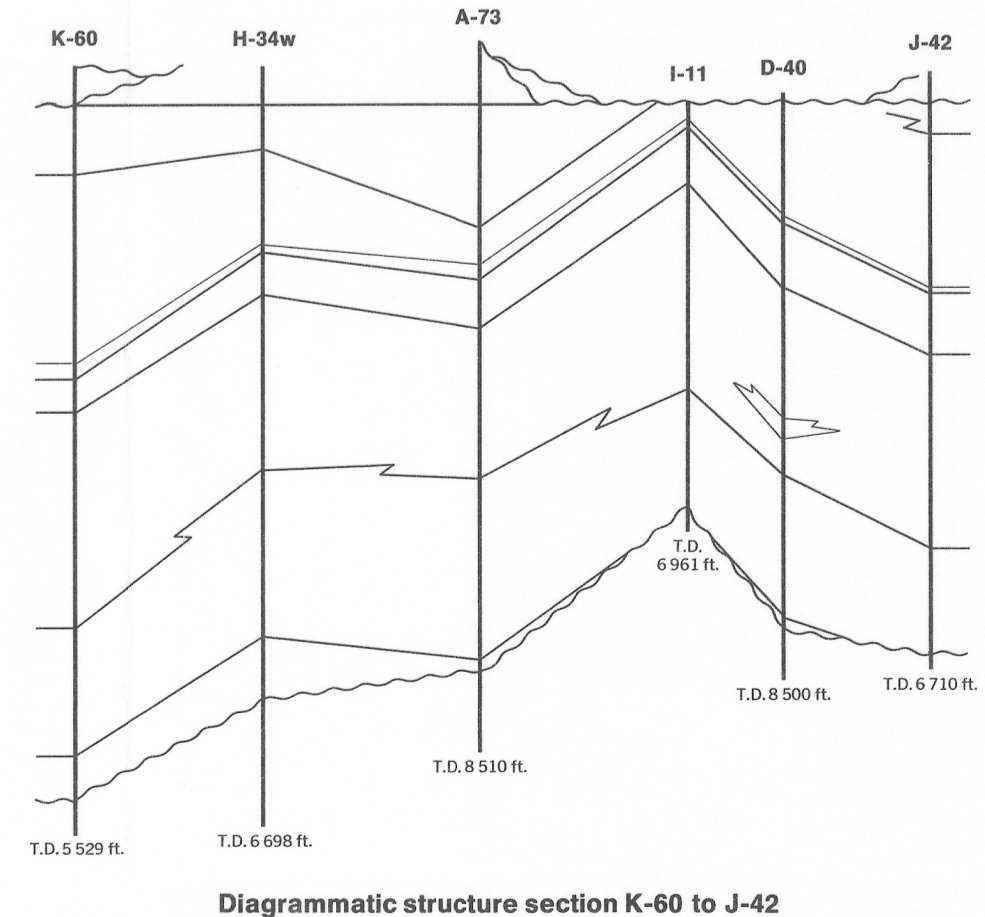
	Shale	sh
	Sandstone	ss
	Siltstone	stsz
	Limestone	l
	Dolomite	d
	Anhydrite	ah
	Salt	sa
	Orthoquartzite	oq
	Fossiliferous	f
	Calcite	ca
	Quartz	q
	Glauconite	gk
	Micaceous	m
	Porosity	p
	Pyrite	py
	Kaolinitic	kl
	Pale chert	pc
	Dark chert	dc
	Oolitic chert	oc
	Oolite	o
	Pelletal	pl
	Paleontological dating (for detail, see Appendix I)	pd
	Approximate feet	ca 30
	Finely crystalline	fk
	Medium crystalline	mk
	Coarsely crystalline	ck

	Unconformity
	Formational boundary
	Member boundary
	Facies change
	Lithofacies, present in minor amounts, as shown by the appropriate code letters
	Paleontological Report (Appendix I)
	Well History Report (WHR-F-48-1973)

Note: All logs predate metrication, therefore all depths are indicated in feet.

Geology by D.C. Pugh, 1975-77  
 To accompany GSC Memoir 401 by D.C. Pugh  
 Drafting by S.D. Orzech, Institute of Sedimentary and Petroleum Geology,  
 Geological Survey of Canada



Index map showing location of columnar sections

Figure 28. Devonian stratigraphic cross-section K-60 to J-42