

Figure 6a. Large glacial bedforms in rock and till with selected striae

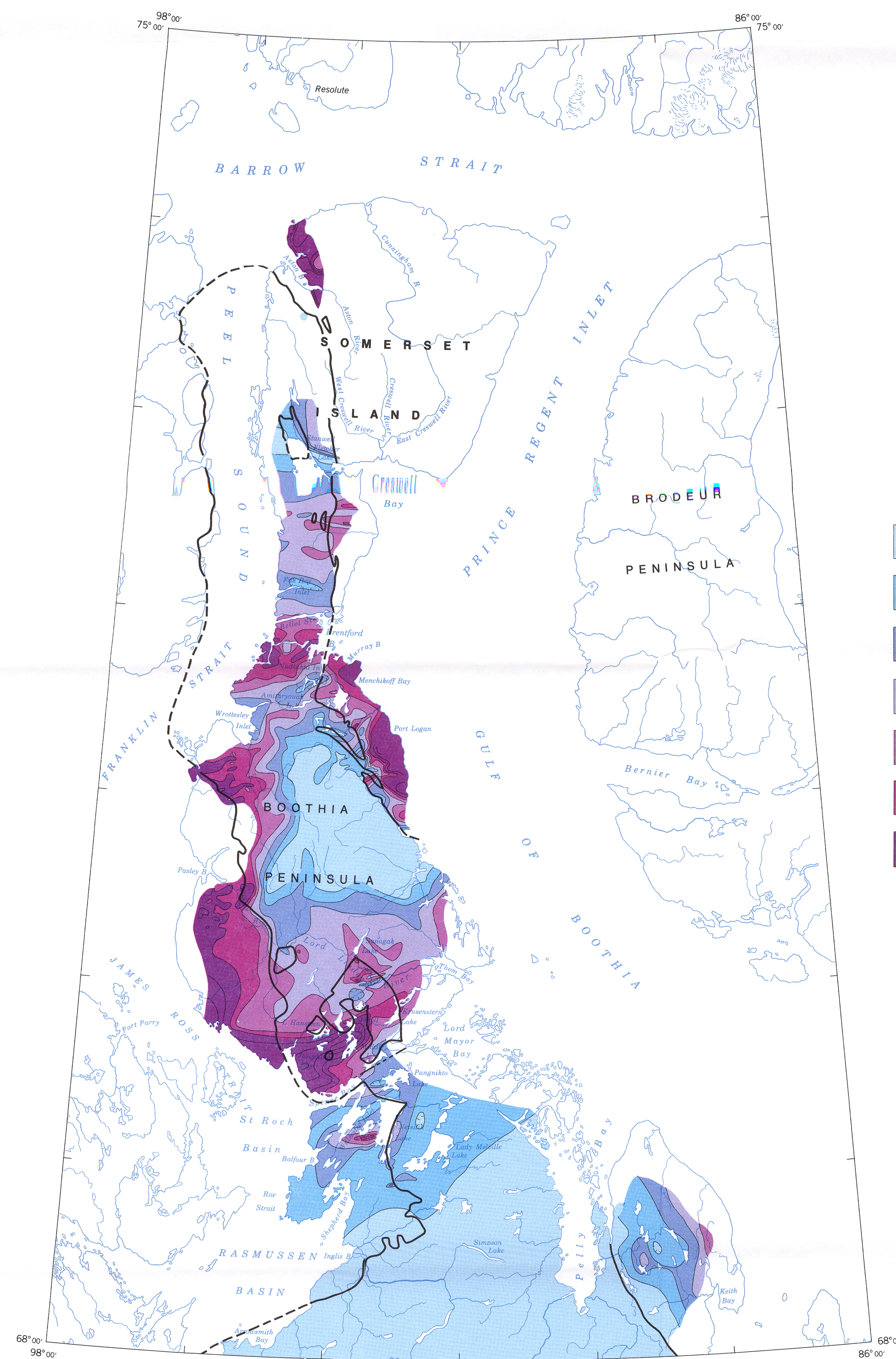


Figure 6b. Carbonate content of the till matrix; ($\leq 2\text{mm}$)

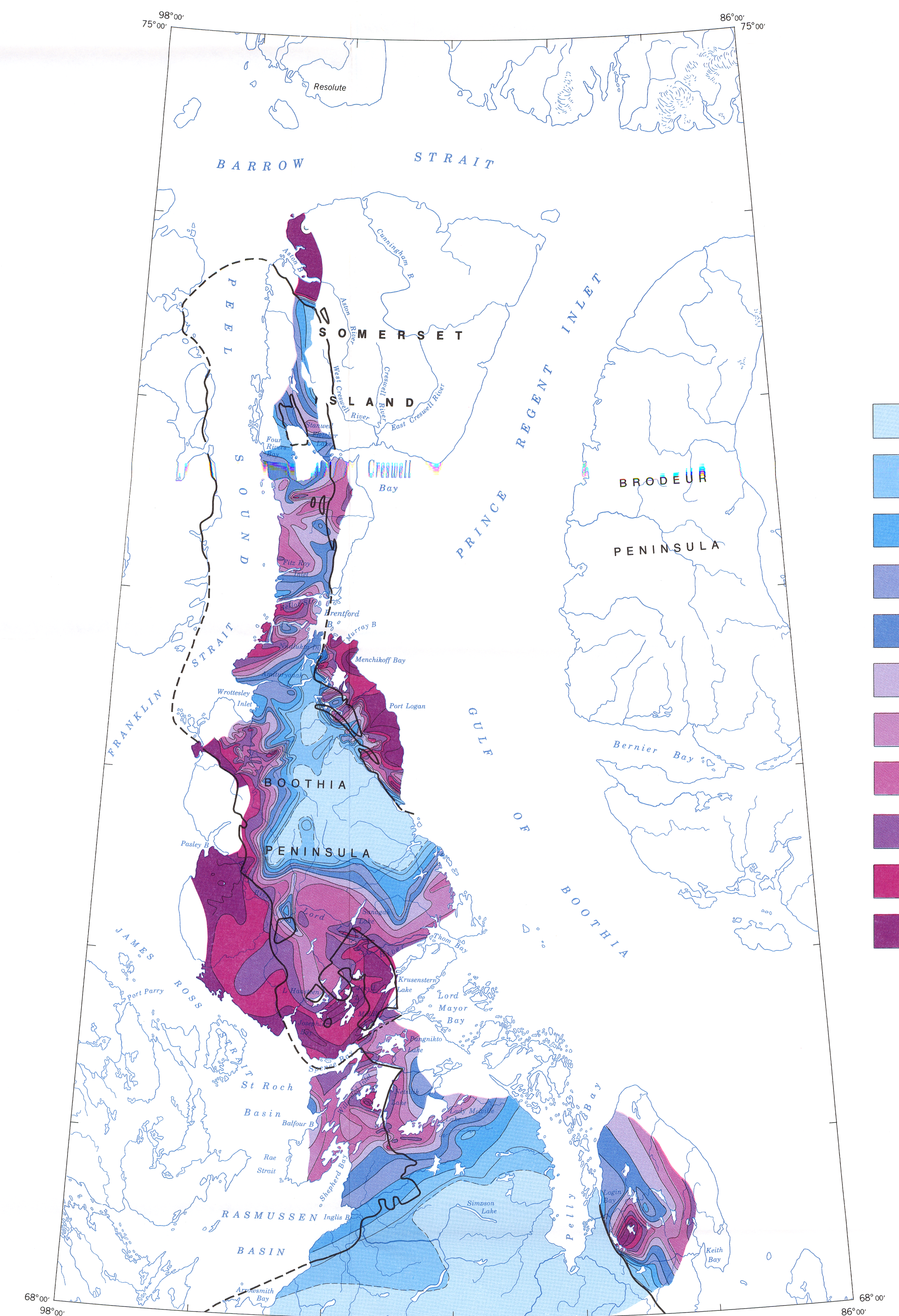


Figure 6c. sedimentary rock content of the fine gravel (2-5.6mm) fraction of till (% by weight)

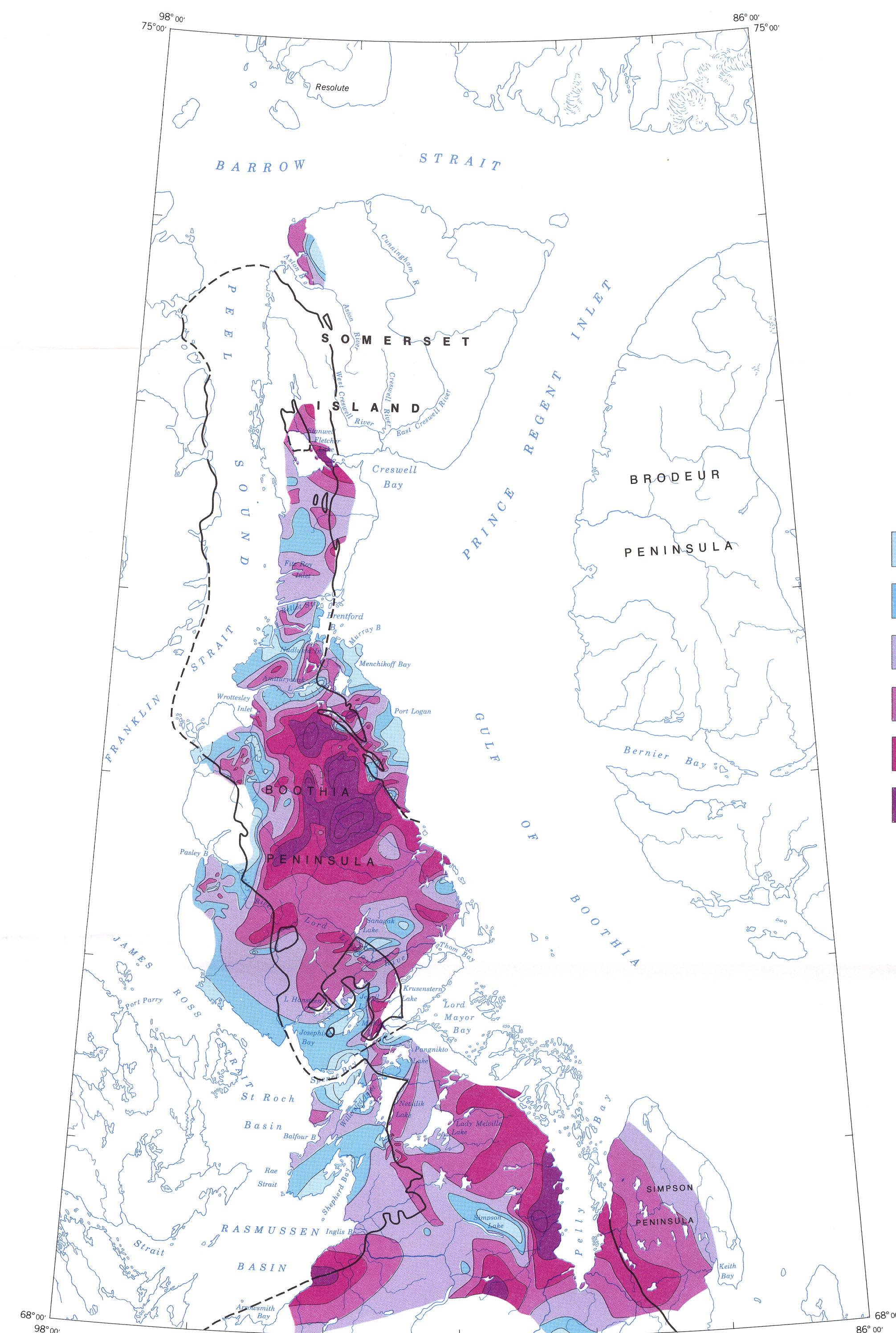


Figure 6d. Sand content of the till matrix

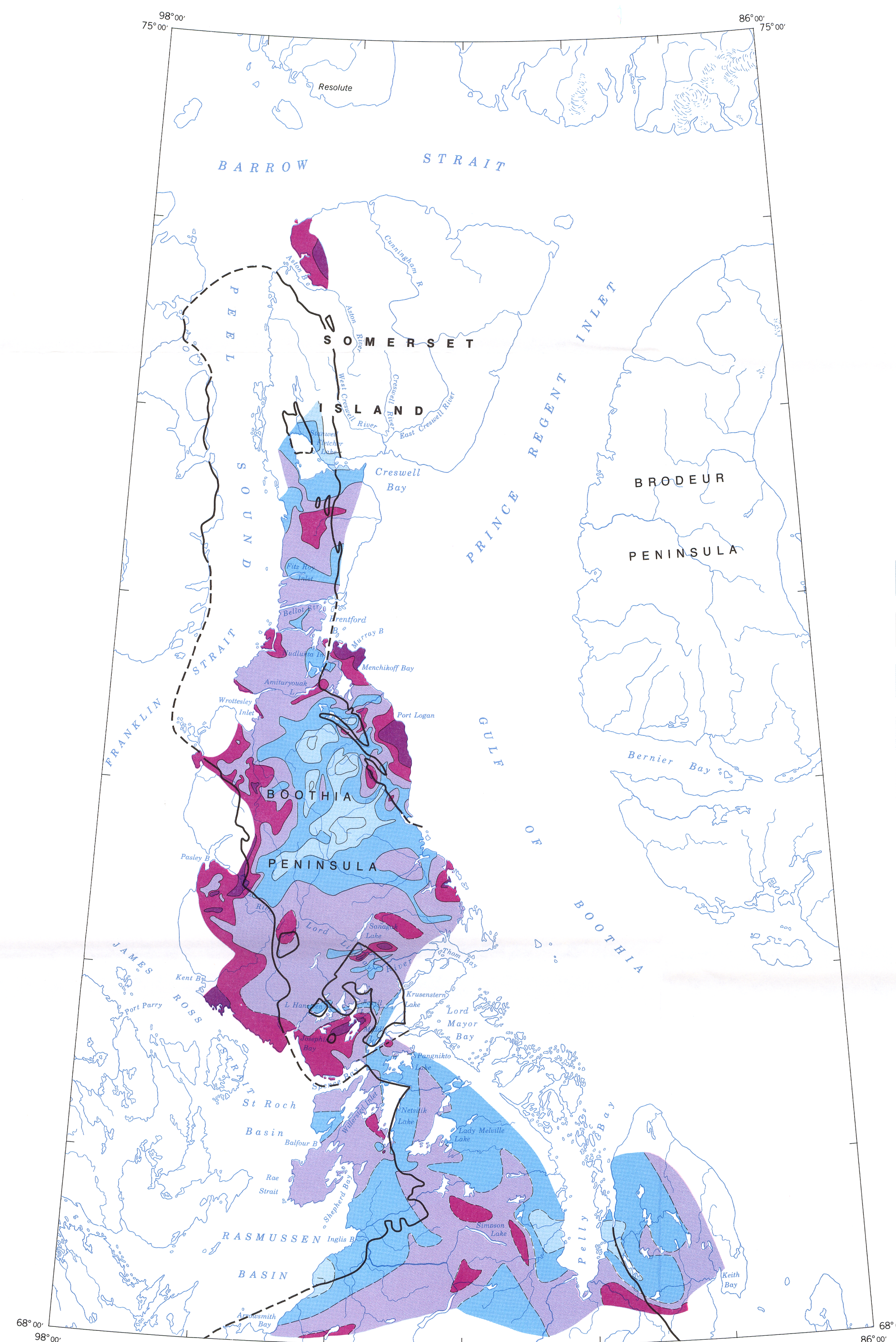
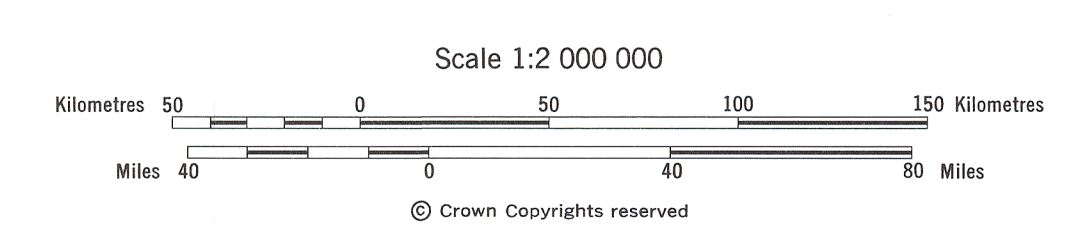


Figure 6e. Silt content of the till matrix

GEOLOGICAL SURVEY OF CANADA
 COMMISSION GÉOLOGIQUE DU CANADA
 DEPARTMENT OF ENERGY, MINES AND RESOURCES
 MINISTÈRE DE L'ÉNERGIE, DES MINES ET DES RESSOURCES

Figure 6. Ice flow features and properties of the late Wisconsin Laurentide till sheet on Somerset Island, Boothia Peninsula, and northern District of Keewatin



Compiled by A.S. Dyke, 1980

To accompany Memoir 407, by A.S. Dyke, 1983

Geological cartography by the Geological Survey of Canada

Base map from MCR 5 at the scale 1:2 000 000 produced by the Surveys and Mapping Branch, Department of Energy, Mines and Resources, Ottawa, 1971

Any revisions or additional geological information known to the user would be welcomed by the Geological Survey of Canada

