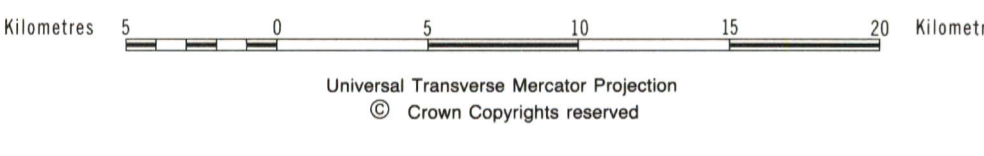
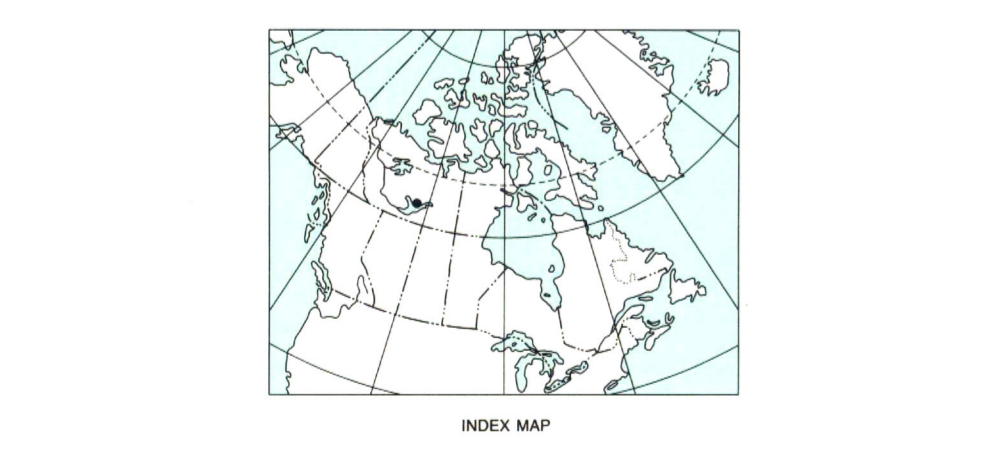
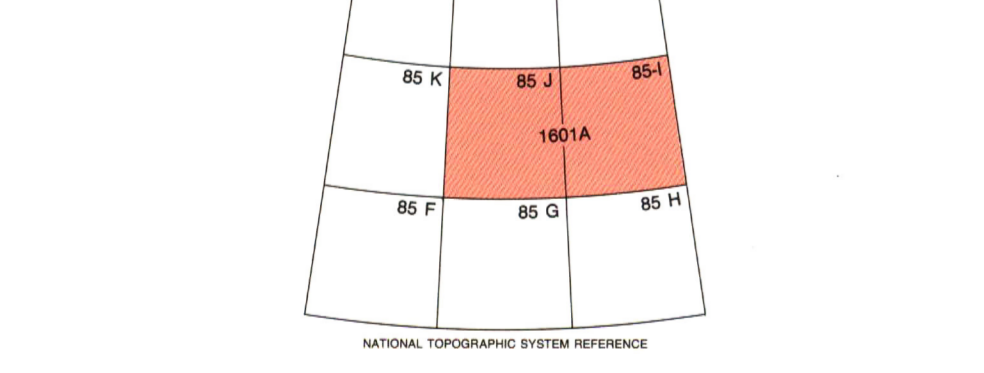


MAP 1601A
GEOLOGY
YELLOWKNIFE - HEARNE LAKE

DISTRICT OF MACKENZIE
NORTHWEST TERRITORIES
Scale 1:250 000



Universal Transverse Mercator Projection
© Crown Copyrights reserved



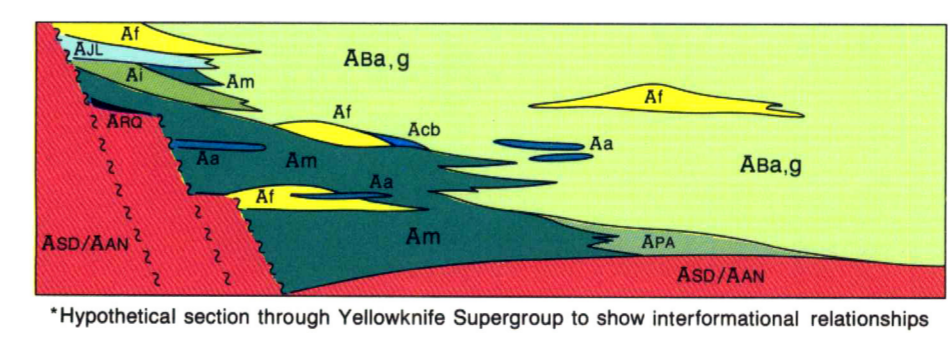
Canada

This map has been produced from a scanned version of the original map
Reproduction par numérisation d'une carte sur papier

Legend for geological units and symbols, including Quaternary, Devonian, Paleozoic, Ordovician, Cambrian, Early Proterozoic, Middle Proterozoic, and Archean units. Includes symbols for faults and other geological features.

Legend for geological units and symbols, including Archean units and symbols for faults and other geological features.

Legend for geological units and symbols, including Yellowknife Supergroup units and symbols for faults and other geological features.



Printed by the Survey and Mapping Branch, Published 1989

Geological boundary (defined, approximately assumed)
Geological boundary (gradational over several kilometres)
Pluton boundary with plutonic complex
Bedding, tops known (inclined, vertical, overturned)
Bedding, tops unknown (inclined, vertical, dip unknown)
Trace of bedding or foliation
Pillow lava, tops known (inclined, vertical, overturned)
Foliation, changes substantially (inclined, vertical, dip unknown)
Limestone (inclined)
Faults
Proterozoic thrust fault
Proterozoic fault
Archean fault
Shear zone
Arctic, antiform
Syncline, synform
Galcial line (direction of ice movement known)
Cordilleria isograd in metasedimentary rocks
Hornblende isograd in metavolcanic rocks

Geology by A. Davidson, 1971; 1977; R.J.W. Douglas and J.W. Norris, 1987; Y.O. Fortin, 1943-1945; L.M. Hauer (compiler), 1975; J.B. Henderson, 1976; 1977; J.J. Henderson, 1977; 1978; J.J. Henderson and C. Brown, 1948-1952; P.F. Hoffman, 1972; 1976; A.W. Joffe, 1935-1938; M.B. Lambert, 1972-1973; W.O. Richmond, 1967

Compiled by J.B. Henderson, 1976, 1981

Geological cartography by P. Corrigan, Geological Survey of Canada

Any revisions or additional geological information known to the user would be welcomed by the Geological Survey of Canada

Base map assembled by the Geological Survey of Canada from maps published at the same scale by the Army Survey Establishment, R.C.E., in 1960 and 1980

Copies of the topographical editions covering this map area may be obtained from the Canada Map Office, Department of Energy, Mines and Resources, Ottawa, Ontario, K1A 0G9

Mean magnetic declination 1984, 28° 31' East; decreasing 16.7' annually. Readings vary from 26° 44' in the SE corner to 30° 17' 6" in the NW corner of the map area

Elevations in feet above mean sea level

Recommended citation:
Henderson, J.B., 1985. Geology, Yellowknife - Hearne Lake, District of Mackenzie, Northwest Territories. Geological Survey of Canada, Map 1601A, scale 1:250 000.

MAP 1601A
YELLOWKNIFE - HEARNE LAKE
DISTRICT OF MACKENZIE
NORTHWEST TERRITORIES