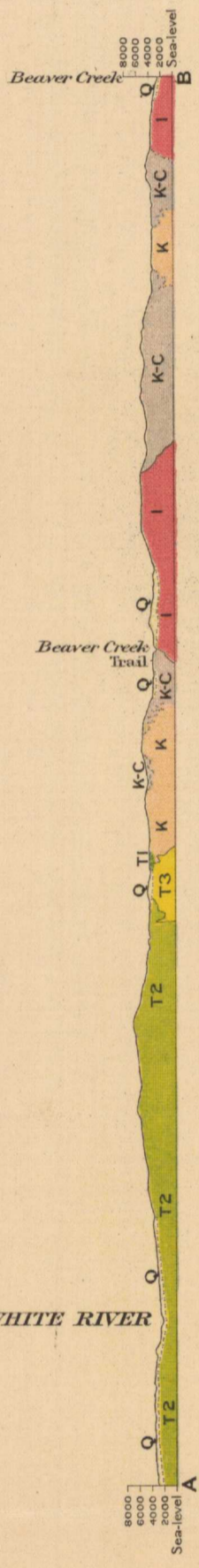


Canada
Department of Mines

HON. L. CODERRE, MINISTER; R. G. M^cCONNELL, DEPUTY MINISTER.

GEOLOGICAL SURVEY



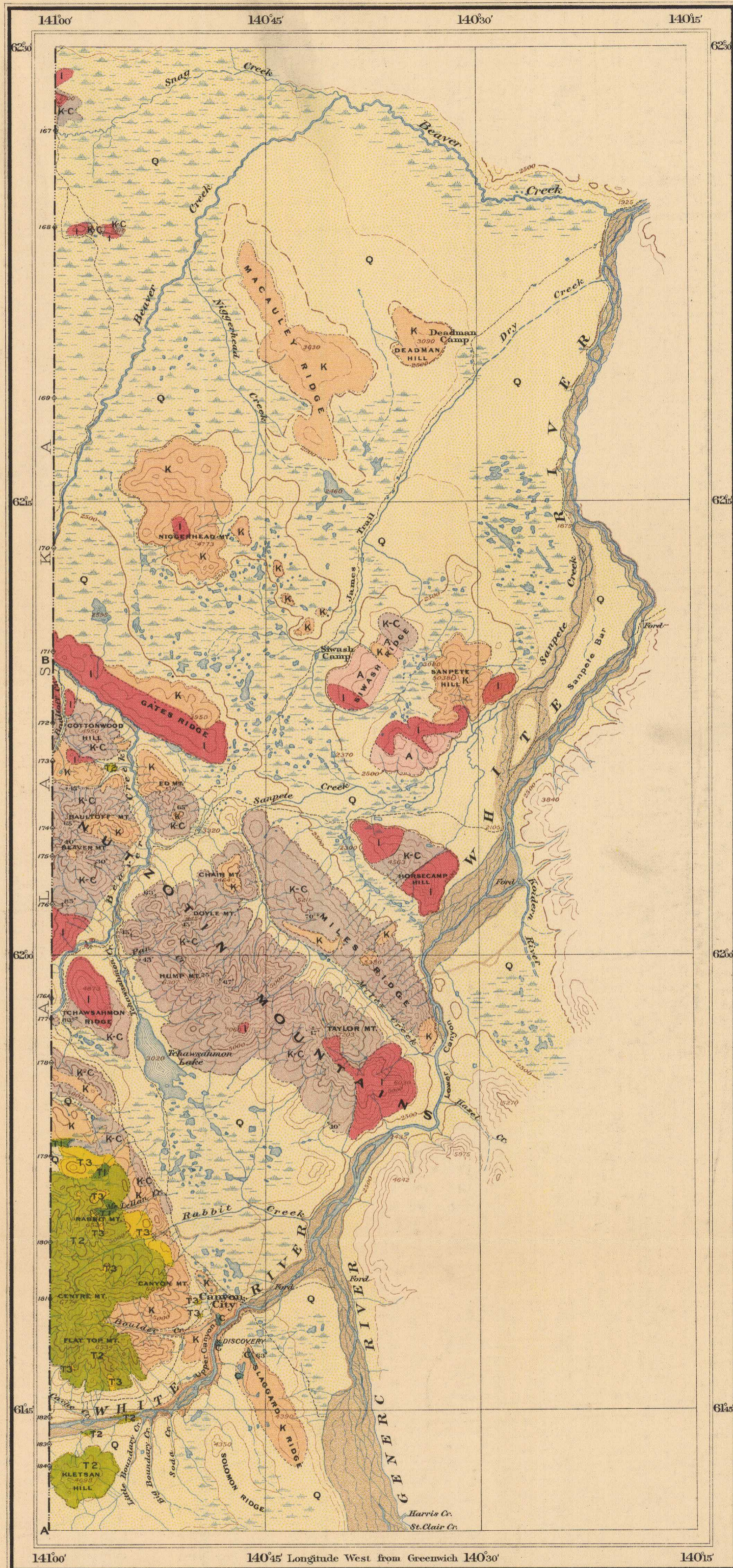
Section A-B along International Boundary

LEGEND

QUATERNARY	RECENT AND PLEISTOCENE	Q	Superficial deposits (gravel, sand, silt, boulder clay, mud, peat, soil, ground ice, volcanic ash)
TERTIARY	POST-EOCENE POSSIBLY IN PART PLEISTOCENE	T3	Rhyolite, latite and Related Volcanics
		T2	Newer Volcanics (mainly augite andesite and basalt, dominantly anhydrolite or pumiceous, with related pyroclastics)
		T1	Tertiary Sediments (conglomerate, sandstone, clay, shale, thin seams of lignite)
MESOZOIC	EOCENE POSSIBLY IN PART OLIGOCENE	I	Granitic Intrusives (group of rocks ranging from granite to gabbro)
	CRETACEOUS OR JURASSIC	K	Older Volcanics (andesite, diabase, basalt, and related pyroclastics)
MESOZOIC	CRETACEOUS TO CARBONIFEROUS	K-C	Shale, sandstone and conglomerate (occasional limestone bed in Carboniferous member; includes dikes and small irregular areas of older volcanics)
	CRETACEOUS TO CARBONIFEROUS	C	Massive limestone with some shale and chert
PRE-CAMBRIAN (?)	CARBONIFEROUS	A	Yukon group (mainly schistose amphibolites, quartzite schists and mica schists)

Symbols

- Geological boundary (observed)
- Geological boundary (assumed)
- Dip and strike

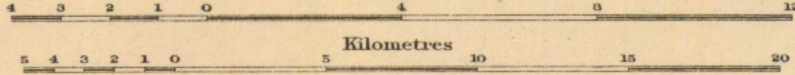


C. O. Senecal, Geographer and Chief Draughtsman, A. Dickson, Draughtsman.

MAP 123 A
(Issued 1915)

UPPER WHITE RIVER DISTRICT
YUKON TERRITORY

Scale, 250,000
Miles



Note. For practical purposes assume 4 MILES TO 1 INCH

LEGEND

Culture

- Buildings
- Trails
- Prospects
- Prospects (location approximate)
- International boundary and monuments

Water

- Rivers and streams
- Lakes and ponds
- Streams (shown approximately)
- Ponds (shown approximately)
- Swamp

Relief

- Contours (showing land forms and elevations above sea level; Interval 500 feet)
- Contours (not well determined)
- Figures (showing heights in feet above sea level)
- Cliffs and steep banks on river
- Sand and gravel

Average magnetic declination 32° 45' East

LIBRARY / BIBLIOTHÈQUE
A: 12 1915
GEOLOGICAL SURVEY
COMMISSION GÉOLOGIQUE



To accompany Memoir by D. D. Cairnes.

MAP LIBRARY / CARTOTHEQUE

NOT TO BE TAKEN FROM LIBRARY
NE PAS SORTIR DE LA BIBLIOTHÈQUE

123A