

NW

SE

1.05 km
0.65 mi.

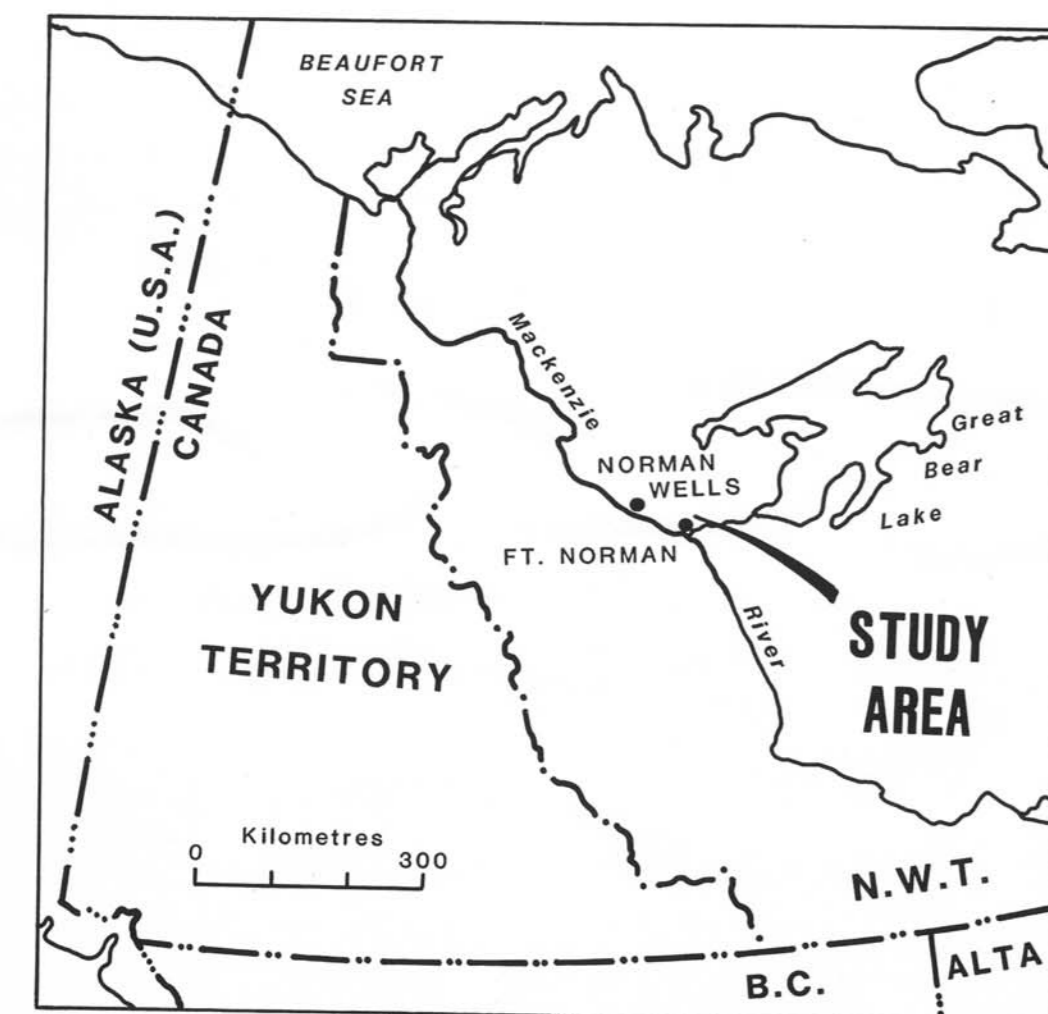
1.6 km
1.0 mi.

LEGEND

CORE AND FACIES SYMBOLS

- Calcarenite
- Dendroid stromatoporoids
- Tabular stromatoporoids
- Bulbous stromatoporoids
- Subspherical stromatoporoids
- Amphipora (in light brown facies)
- Amphipora (in dark brown facies)
- Thick-shelled brachiopods
- Crinoid ossicles
- Argillaceous or bituminous
- Boudinage structures in fine-grained limestones
- Gastropods
- Porosity
- Corals

- Water injection well
- Oil well
- Abandoned oil well
- Fore - reef and reef facies
- Fractures
- Rubble



March 1984

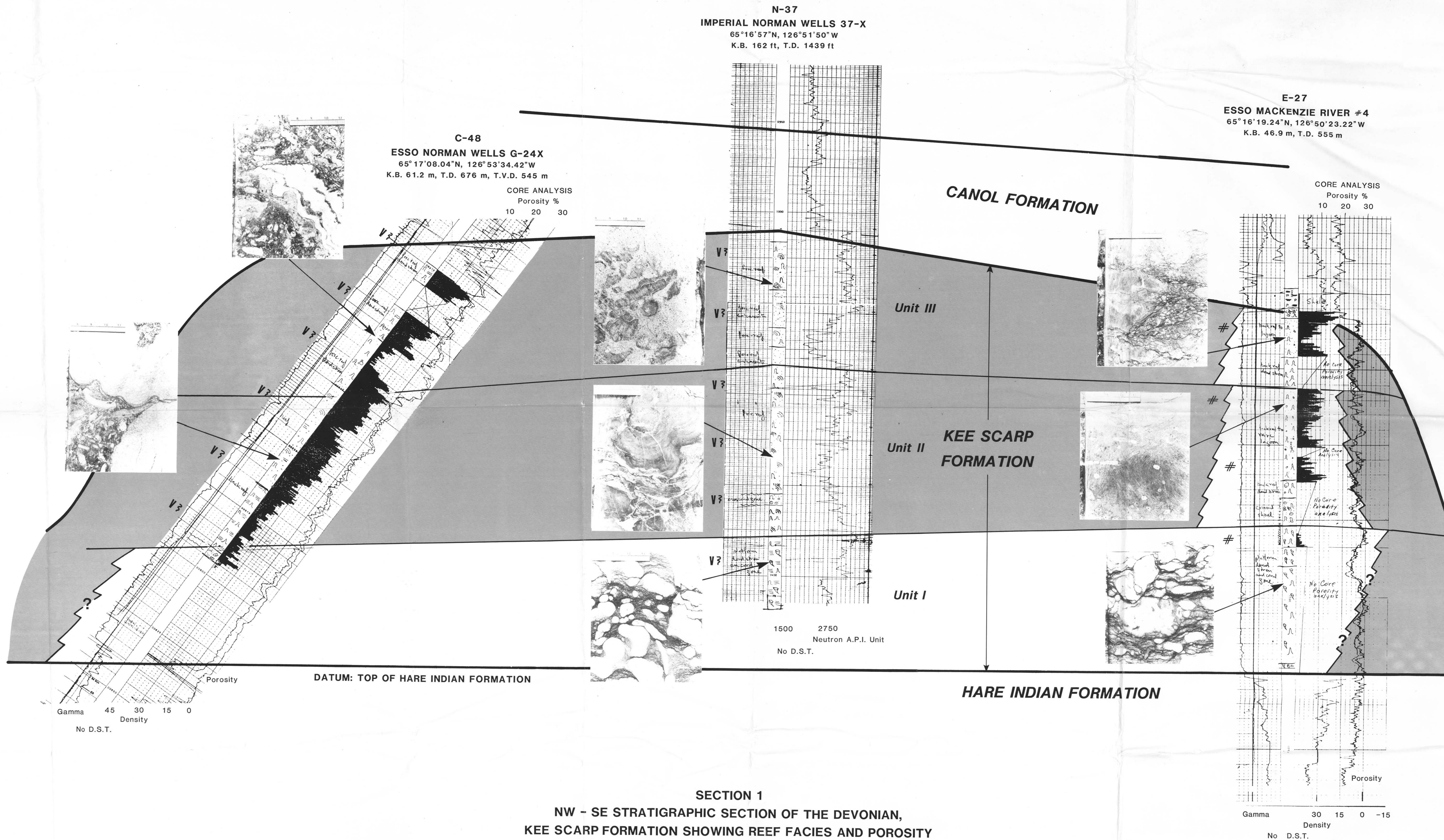
N-37
IMPERIAL NORMAN WELLS 37-X
 65°16'57"N, 126°51'50"W
 K.B. 162 ft, T.D. 1439 ft

E-27
ESSO MACKENZIE RIVER #4
 65°16'19.24"N, 126°50'23.22"W
 K.B. 46.9 m, T.D. 555 m

C-48
ESSO NORMAN WELLS G-24X
 65°17'08.04"N, 126°53'34.42"W
 K.B. 61.2 m, T.D. 676 m, T.V.D. 545 m

CORE ANALYSIS
 Porosity %
 10 20 30

CORE ANALYSIS
 Porosity %
 10 20 30



SECTION 1
NW - SE STRATIGRAPHIC SECTION OF THE DEVONIAN,
KEE SCARP FORMATION SHOWING REEF FACIES AND POROSITY

NORMAN WELLS OIL FIELD N.W.T.

Note: For location of sections, see Map 1
Vertical scale 1:480

This document was produced
 by scanning the original publication.
 Ce document est le produit d'une
 numérisation par balayage
 de la publication originale.

OPEN FILE
 DOSSIER PUBLIC
1116
 GEOLOGICAL SURVEY
 COMMISSION GÉOLOGIQUE
 OTTAWA