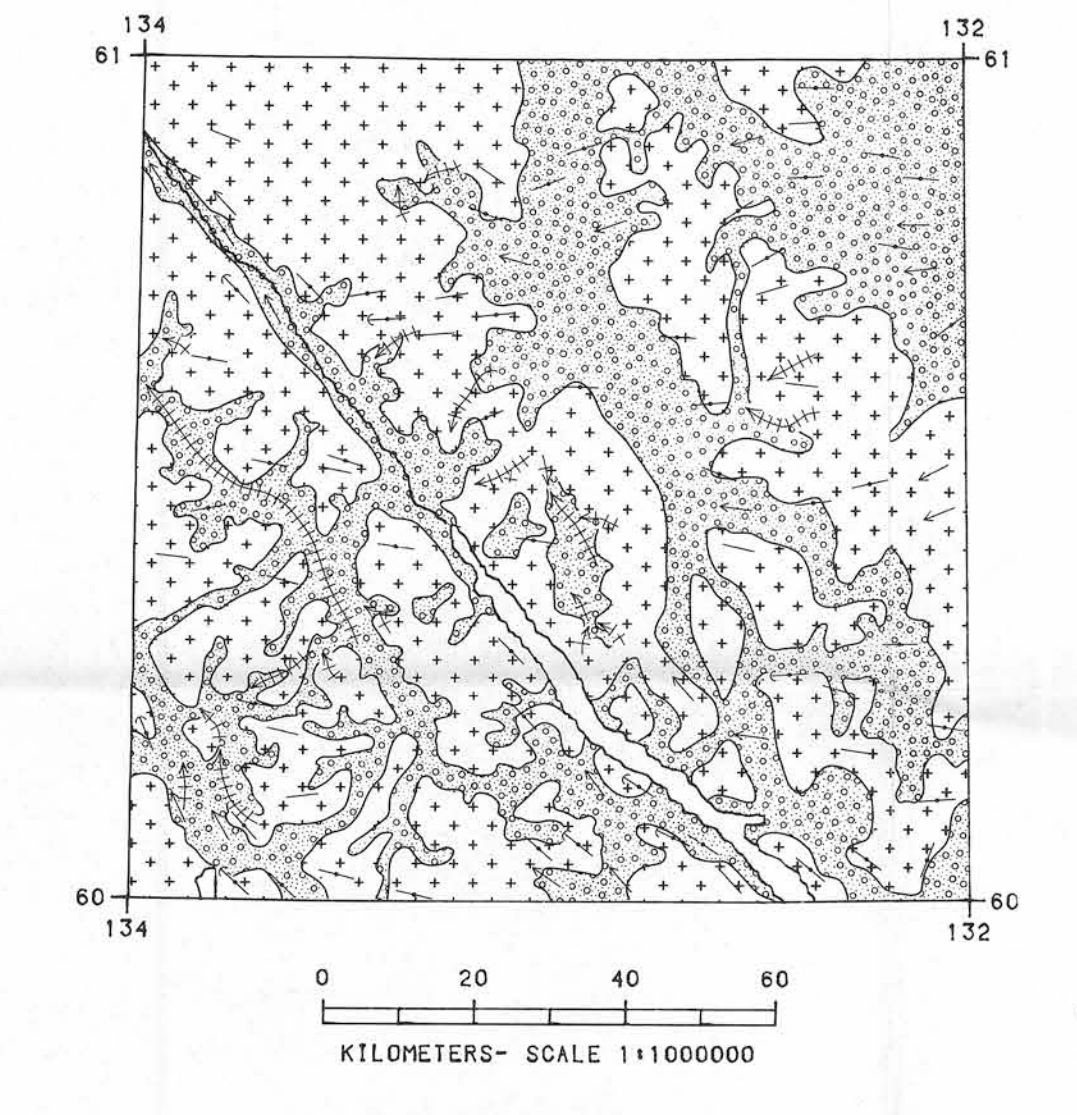
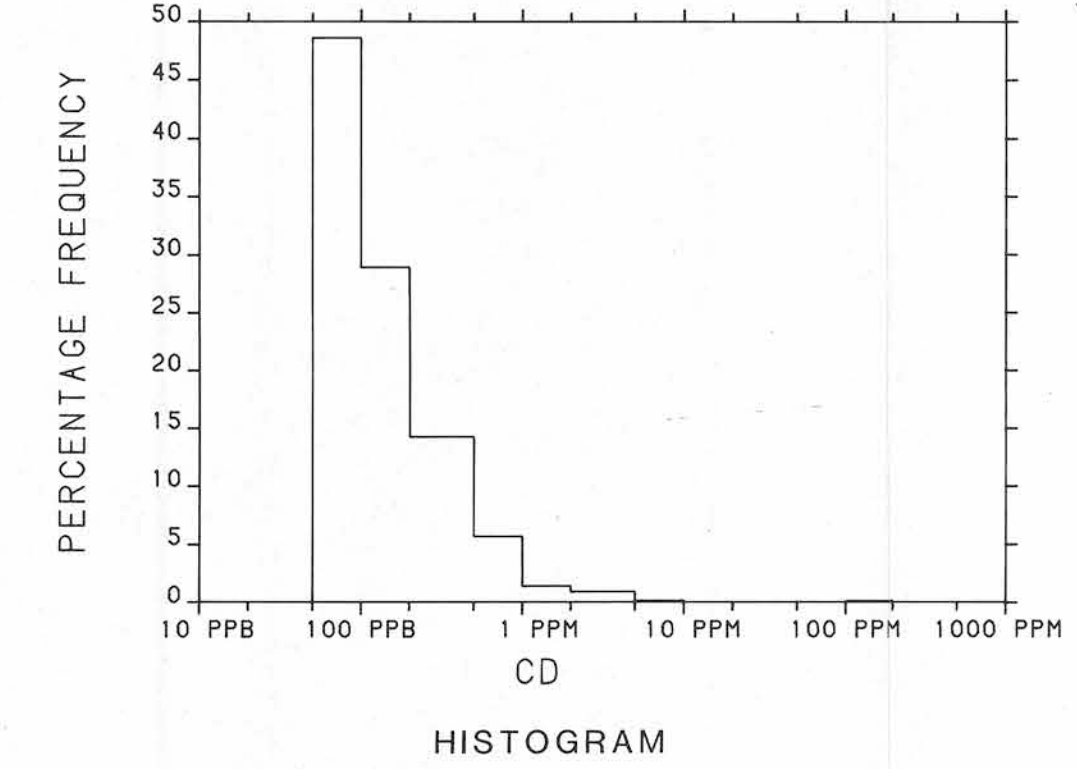
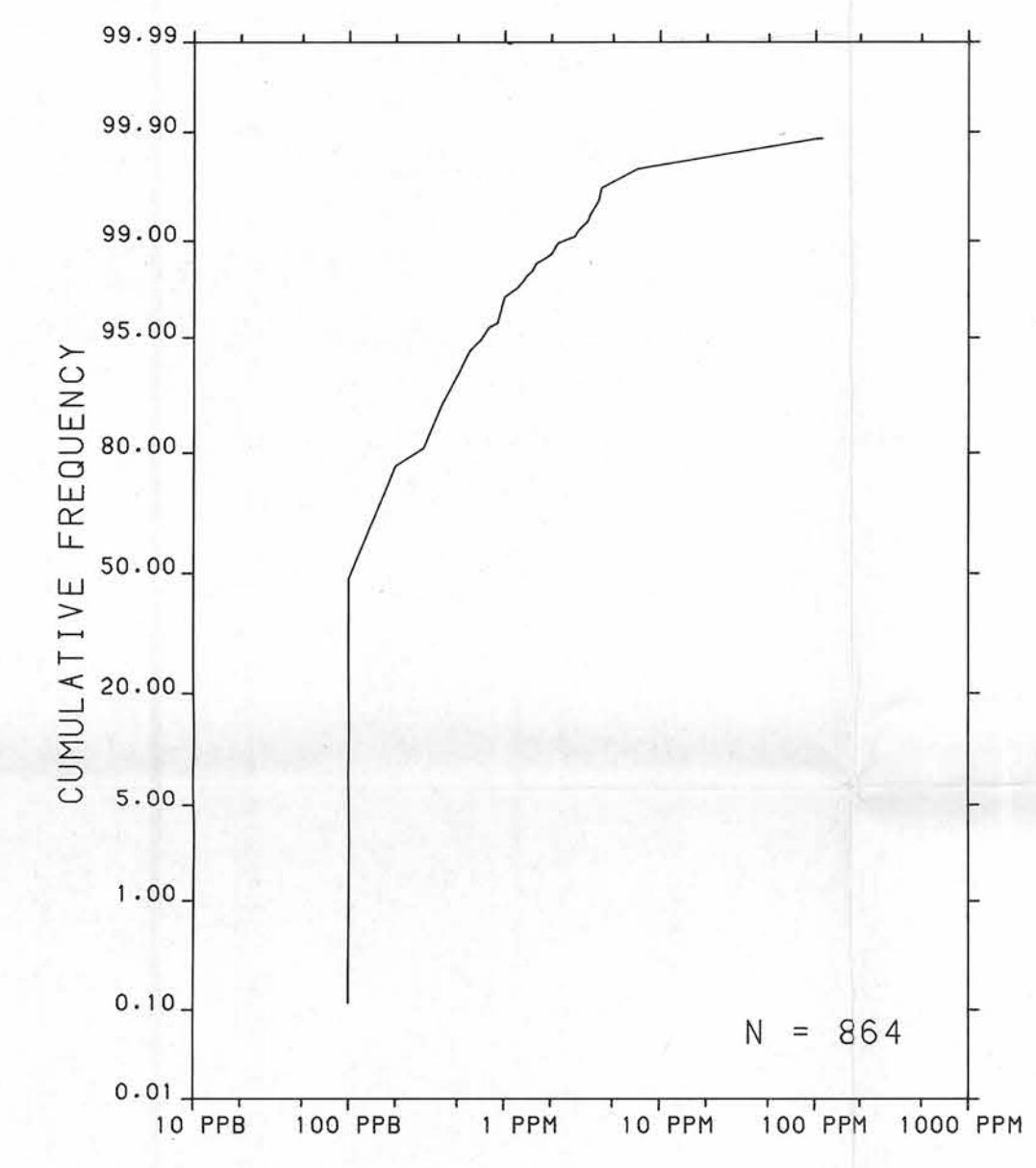


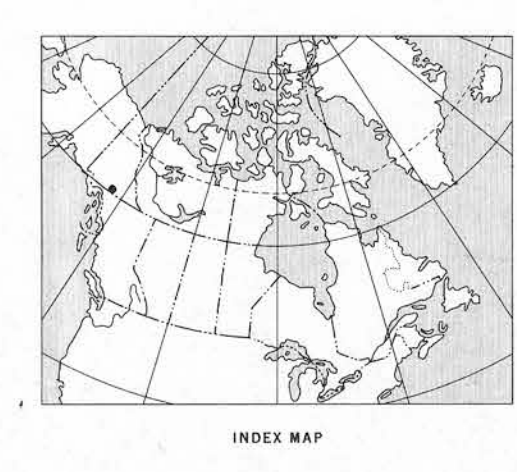
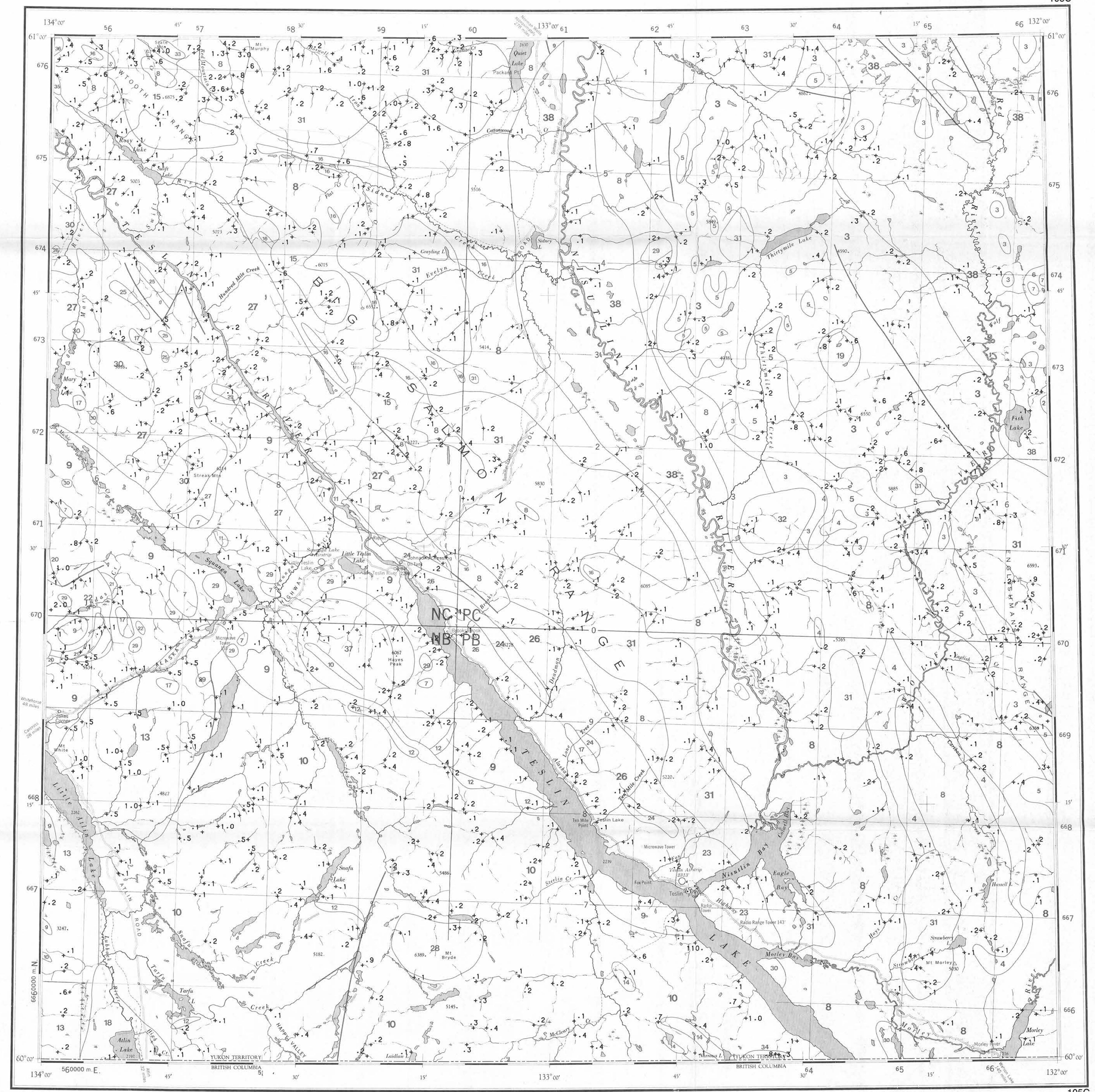
The regional geochemical trend map displayed above utilized a moving weighted average using an inverse distance function (1/d<sup>2</sup>) to filter out minor irregularities and emphasize broad-scale regional features. Single point anomalies may be suppressed or eliminated, however, geological units which are chemically enriched, or large metallic deposits undergoing weathering would be expected to produce identifiable anomalies.



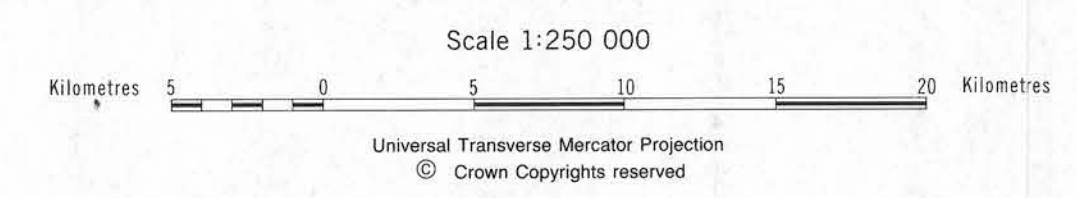
Undivided surficial deposits; includes alluvium, glacial till, ground moraine, outwash and ice contact deposits, colluvium.  
 Bedrock exposures; includes discontinuous veneer of undivided glacial drift, local alpine glaciation features.

Surficial deposit boundary  
 Meltwater channels, outwash deposits, indicating direction of flow  
 Glaciation lineation parallel to ice flow direction, includes fluting, crag and tail, roches moutonnées and drumlinoid forms, direction of flow known, unknown  
 Drumlinoid form, direction of movement inferred, not inferred

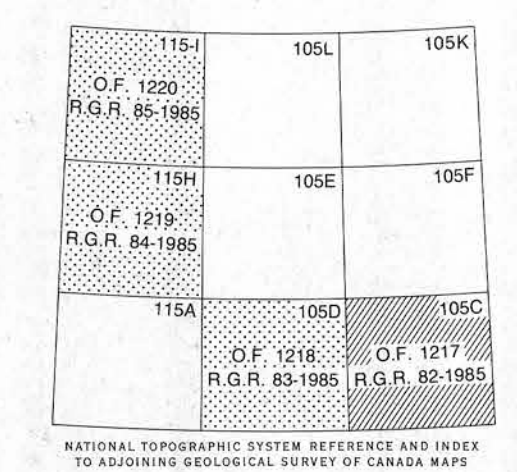
Sources of information:  
 Hughes, O.L., Campbell, R.B., Muller, J.E., and Wheeler, J.O. (1968) Glacial Map of Yukon Territory, Geological Survey of Canada, Map 6-1968, (1:1 000 000 scale) to accompany GSC Paper 68-34.  
 Mulligan, R. (1963) Geology TESLIN, Yukon Territory, Geological Survey of Canada, Map 1125A (1:253 440 scale).  
 Prest, V.K., Grant, D.R., and Rampton, V.N. (1967) Glacial Map of Canada, Geological Survey of Canada (1:5 000 000 scale).



Elevation in feet above mean sea level  
 Mean magnetic declination 1986, 29°38' East, decreasing 15.3' annually. Readings vary from 29°23' E in the SE corner to 29°50' E in the NW corner of the map area



Base map at the same scale published by the Surveys and Mapping Branch in 1979. Streams were revised by the Geological Survey of Canada for this edition.



LEGEND

QUATERNARY	38	QS 64*	Glacial and surficial deposits
TERTIARY			
		LATE TERTIARY	
	37	LTG 62	Rhyolite porphyry, granite, granodiorite
		PLIOCENE	
	36	PV 62	Basalt
		EOCENE	
		MOUNT NANSEN GROUP	
	35	EMN 59	Acid to intermediate tuff, breccia
		SLOKO GROUP	
	34	ESL 59	Rhyolite, trachyte
		CRETACEOUS AND TERTIARY	
	33	KTVD 56	Andesite and dacite porphyry
CRETACEOUS			
	32	KY 52	Syenite, monzonite
	31	KQM 52	Quartz monzonite, granodiorite; CASSIAR quartz monzonite, alaskite
	30	KGD 52	Granodiorite
JURASSIC AND CRETACEOUS			
	29	JKD1 51	Diorite, hornblende diorite
	28	JKB 51	Gabbro, diorite, some ultramafic rocks
TRIASSIC AND JURASSIC			
	27	TJS 46	Argillite, sandstone, siltstone
	26	TJSV 46	Volcanic and sedimentary rocks
	25	TJC 46	Limestone
	24	TWP 46	Augite, hornblende feldspar porphyry
TRIASSIC			
	23	TY 42	Basaltic greenstone
		UPPER TRIASSIC	
		LEWES RIVER GROUP (UTLM, UTC, UTLV)	
	22	UTLM 45	Greywacke, argillite, conglomerate
	21	UTC 45	Limestone
	20	UTLV 45	Andesite, basalt
MESOZOIC UNDIVIDED			
	19	MGD 41	Granodiorite, quartz monzonite
	18	MGDM 41	Foliated hornblende granodiorite, quartz monzonite
PERMIAN AND TRIASSIC			
	17	PTUB 40	Pyroxenite, serpentinite
PALEOZOIC UNDIVIDED			
	16	PC 09	Limestone
	15	PGDN 09	PELLY GNEISS: Foliated to gneissic granodiorite
PERMIAN			
	14	PT 36	TESLIN: Limestone
CARBONIFEROUS AND PERMIAN			
	13	CPH 35	HORSEFEED: Limestone
	12	CPKC 35	KEDAHDA: Limestone
	11	CP 35	Limestone
	10	CPK 35	KEDAHDA: Chert, argillite
	9	CPV 35	Andesite, basalt, chert, tuff
	8	CPSM 35	Schist, gneiss; includes BIG SALMON METAMORPHIC COMPLEX
	7	CPUB 35	Serpentinite, diorite, pyroxenite, peridotite
PENNSYLVANIAN			
	6	PCG 33	Limestone
MISSISSIPPIAN			
	5	MC 34	Limestone
CARBONIFEROUS			
	4	CC 30	Limestone
		ENGLISHMAN'S GROUP	
	3	CE 30	Quartzite, phyllite, schist, chert, conglomerate, limestone
	2	CTP 30	Chert, argillite, phyllite, quartzite
SILURIAN AND DEVONIAN			
	1	SDCQ 24	Dolomite, quartzite, argillite

\*A mnemonic code assigned to rock types and recorded as part of field observations  
 Geological boundary  
 Fault  
 No analytical result

Geological base and legend are derived from: Map 1398A, MACMILLAN RIVER, YUKON - DISTRICT OF MACKENZIE - ALASKA, NTS SHEET 105, 115. Compiled by H. Gabrielse, D.J. Tempelman-Kluit, S.L. Blusson and R.B. Campbell; Geological Survey of Canada, Energy, Mines and Resources Canada, 1980. 1:1 000 000 scale