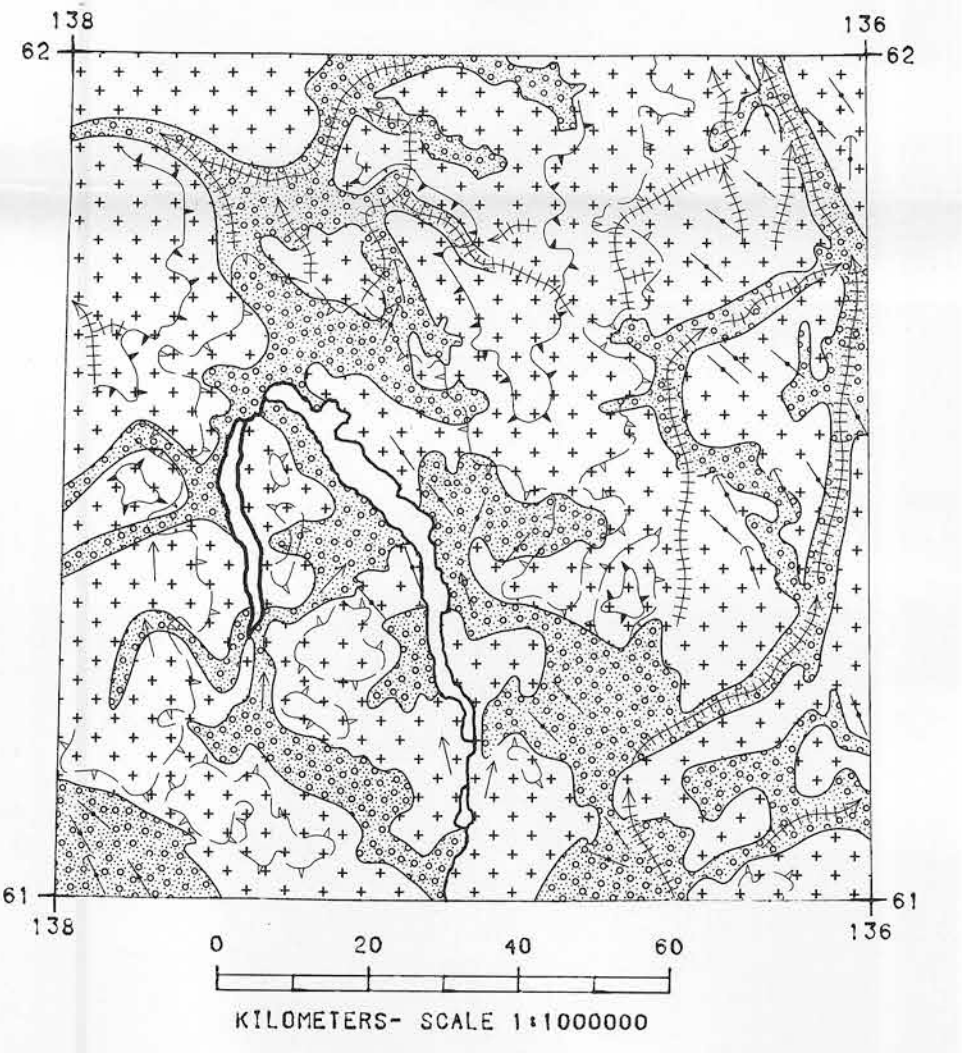
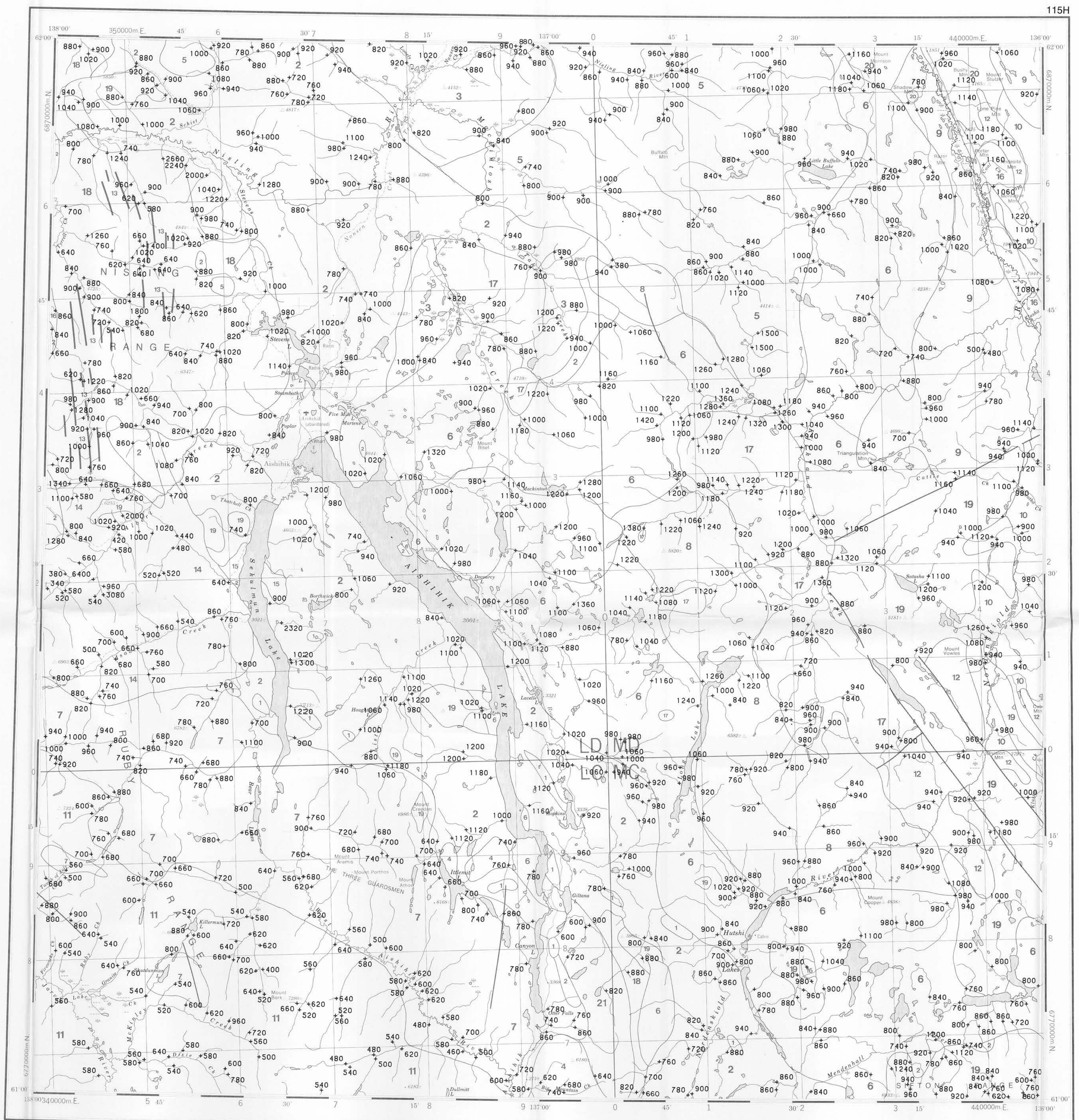
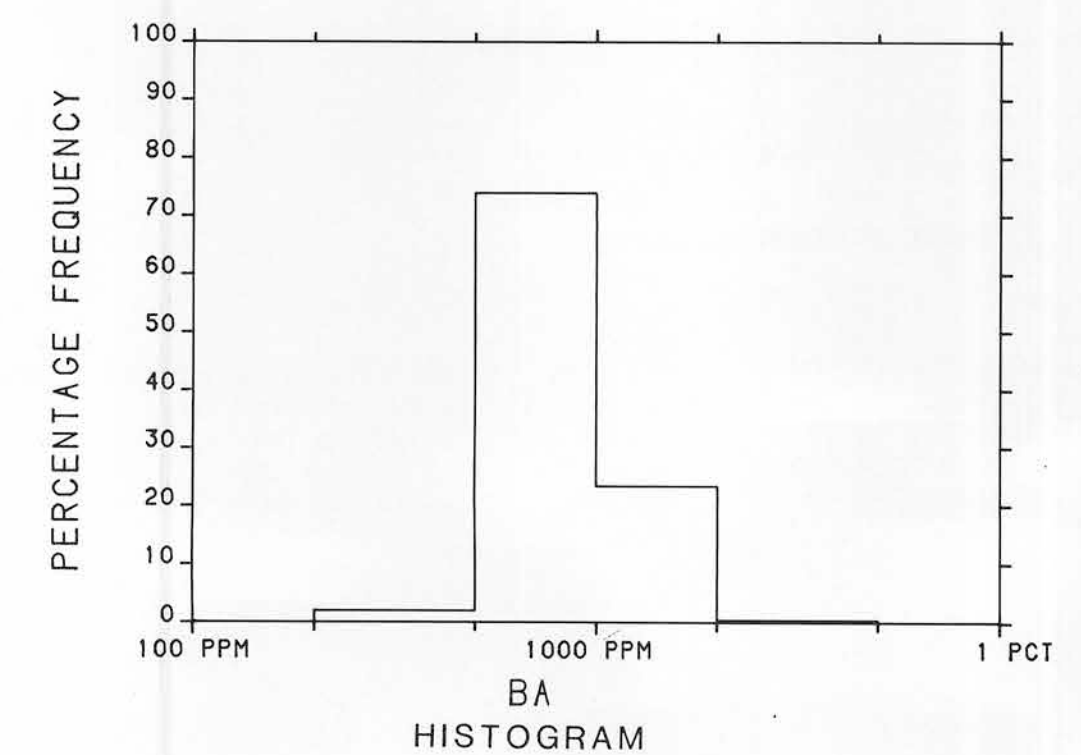
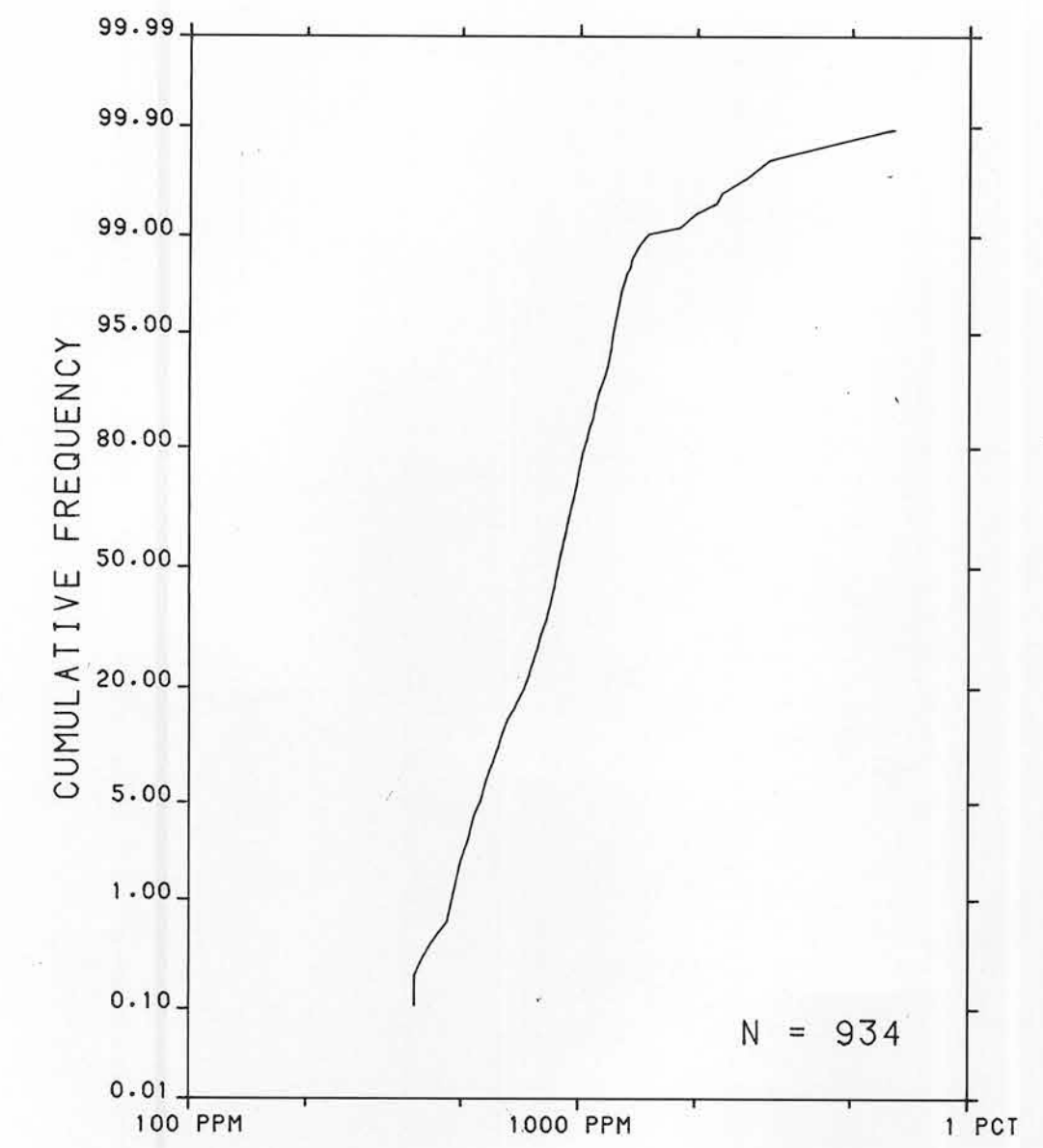
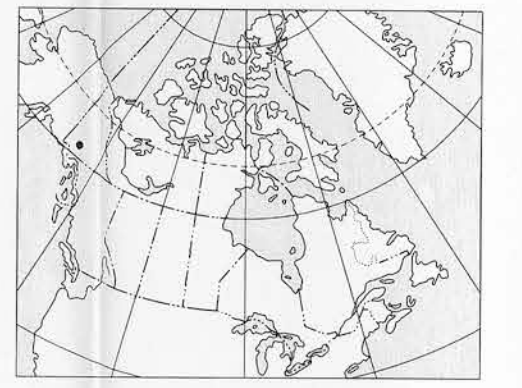


The regional geochemical trend map displayed above utilized a moving weighted average using an inverse distance function (1/d³) to filter out minor irregularities and emphasize broad-scale regional features. Single point anomalies may be suppressed or eliminated, however, geological units which are chemically enriched, or large metallic deposits undergoing weathering would be expected to produce identifiable anomalies.



- SYMBOLS**
- Undivided surficial deposits; alluvium, glacial till and moraine, outwash and ice contact deposits, volcanic ash, loess, colluvium
 - Bedrock exposures; includes discontinuous veneer of undivided glacial drift
- Surficial deposit boundary
- Limit of Pre-Reid ice advance
- Limit of McConnell (Ruby) ice advance
- Meltwater channels, outwash deposits, indicating direction of flow
- Glaciation lineation parallel to ice flow direction, includes fluting, crag and tail, roches moutonnées and drumlinoid forms, direction of flow indicated
- Drumlinoid form, direction of movement inferred, not inferred

Sources of information:
 Hughes, O.L., Campbell, R.B., Muller, J.E., and Wheeler, J.O. (1968) Glacial Map of Yukon Territory, Geological Survey of Canada, Map 6-1968, (1:1 000 000 scale) to accompany GSC Paper 68-34.
 Prest, V.K., Grant, D.R., and Rampton, V.N. (1967) Glacial Map of Canada, Geological Survey of Canada (1:5 000 000 scale).
 Templeman-Kluit, D.J. (1973) Geology - AISHIHIK LAKE, Yukon Territory, Geological Survey of Canada, Map 17-1973, (1:250 000 scale) to accompany Paper 73-41.



Elevation in feet above mean sea level

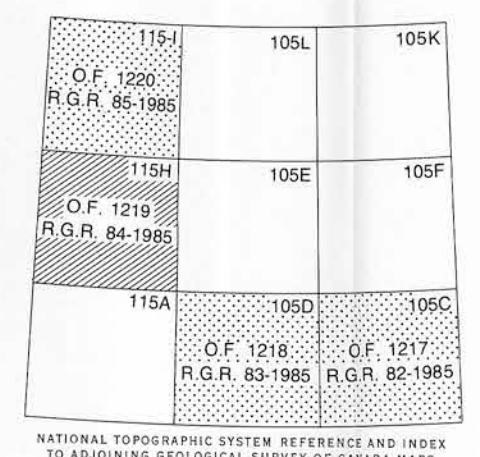
Mean magnetic declination 1986, 29°39' East, decreasing 13.4' annually. Readings vary from 29°29' E in the SE corner to 29°48' E in the NW corner of the map area

BARIUM (ppm)
 GSC OPEN FILE 1219
 REGIONAL GEOCHEMICAL RECONNAISSANCE MAP 84-1985
 CANADA-YUKON
 MINERAL DEVELOPMENT AGREEMENT (1984-89)
 STREAM SEDIMENT AND WATER GEOCHEMICAL SURVEY
 SOUTHERN YUKON TERRITORY, 1985

Scale 1:250 000

National Transverse Mercator Projection
 © Crown Copyrights reserved

Base map at the same scale published by the Survey and Mapping Branch in 1971. Streams were revised by the Geological Survey of Canada for this edition.



- LEGEND**
- TERTIARY**
- LATE TERTIARY
 - 21 LTG 62* Rhyolite porphyry, granite, granodiorite
 - OLIGOCENE AND MIOCENE
 - CARMACKS GROUP
 - 20 OMCV 60 Andesite, basalt, breccia
 - EOCENE
 - MOUNT NANSEN GROUP
 - 19 EMN 59 Acid to intermediate tuff, breccia
 - LOWER(?) TERTIARY
 - 18 TFP 58 Feldspar porphyry dykes and flows
 - 17 TVA 58 Acid tuff
 - 16 TVD 58 Andesite, porphyritic basalt flows and dykes
 - EARLY TERTIARY
 - 15 ETGA 57 Alaskite, granite, quartz monzonite
 - 14 ETQM 57 Granite, quartz monzonite
 - 13 FPPP 57 Feldspar porphyry dykes
- JURASSIC AND CRETACEOUS**
- 12 JKT 51 TANTALUS: Conglomerate, siltstone, arkose, coal
 - 11 JKK 51 KLUANE: Sericitic to biotitic schist, gneiss, amphibolite
- JURASSIC**
- LABERGE GROUP
 - 10 JL 47 Greywacke, arkose, conglomerate
- TRIASSIC**
- 9 TV 42 Basaltic greenstone
 - 8 TQM 42 Leucocratic, porphyritic quartz monzonite
 - 7 TGD 42 RUBY RANGE: Granodiorite
 - 6 TGDN 42 Foliated hornblende granodiorite, quartz
- MESOZOIC UNDIVIDED**
- 5 MQM 41 Porphyritic quartz monzonite
 - 4 MDI 41 Diorite
- PALEOZOIC UNDIVIDED**
- 3 PM 09 Amphibolite, schist, gneiss
- HADRYNIAN AND CAMBRIAN**
- 2 HCSN 08 Schist, gneiss, quartzite
- HADRYNIAN**
- 1 HC 07 Crystalline limestone

*A mnemonic code assigned to rock types and recorded as part of field observations

Geological boundary
 Fault
 No analytical result

Geological base and legend are derived from: Map 1398A, MACMILLAN RIVER, YUKON - DISTRICT OF MACKENZIE - ALASKA, NTS SHEET 105, 115. Compiled by H. Gabrielse, D.J. Templeman-Kluit, S.L. Blusson and R.B. Campbell, Geological Survey of Canada, Energy, Mines and Resources Canada, 1980. 1:1 000 000 scale