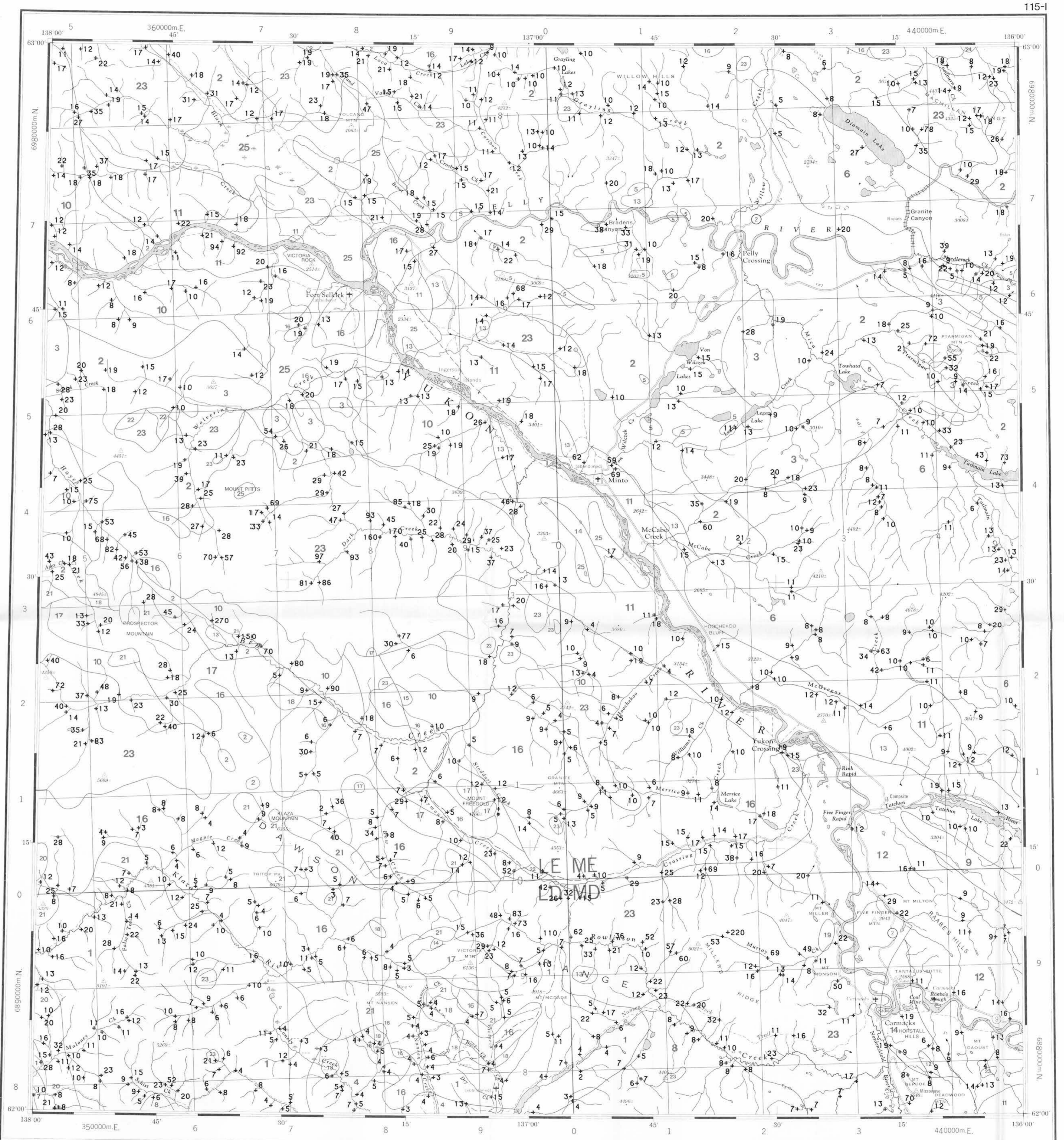


Sources of information:  
 Bostock, H.S. (1936) Geology - CARMACKS SHEET, Yukon Territory, Canada  
 Department of Mines, Bureau of Economic Geology, Geological Survey, Map 340A (1:253,440 scale)  
 Hughes, O.L., Campbell, R.B., Muller, J.E., and Wheeler, J.O. (1968) Glacial Map of Yukon Territory, Geological Survey of Canada, Map 6-1968, (1:1 000 000 scale) to accompany GSC Paper 60-34  
 Prest, V.K., Grant, D.R., and Rampton, V.N. (1967) Glacial Map of Canada, Geological Survey of Canada (1:5 000 000 scale)



QUATERNARY	RECENT
	SELKIRK GROUP
25	RS 64* Basalt, andesite flows, breccia, tuff
TERTIARY	
	LATE TERTIARY
24	LTG 62 Rhyolite porphyry, granite, granodiorite
	OLIGOCENE AND MIOCENE
	CARMACKS GROUP
23	OMCV 60 Andesite, basalt, breccia
	OLIGOCENE
	CARMACKS GROUP
22	OCS 60 Conglomerate, sandstone, shale
	Eocene
	MOUNT NANSEN GROUP
21	ENM 59 Acid to intermediate tuff, breccia
	LOWER TERTIARY
20	TFP 58 Feldspar porphyry dykes, flows
19	TVB 58 Basalt
	EARLY TERTIARY
18	ETF 57 Granite and syenite porphyry, rhyolite
CRETACEOUS	
17	KY 52 Syenite, monzonite
16	KQM 52 Quartz monzonite, granodiorite; CASSIAR quartz monzonite, alaskite
JURASSIC AND CRETACEOUS	
	DEZADEASH GROUP
15	JKD 51 Argillite, greywacke, conglomerate, volcanics
14	JKT 51 TANTALUS: Conglomerate, siltstone, arkose, coal
13	JKDI 51 Diorite, hornblende diorite
JURASSIC	
	LABERGE GROUP
12	JL 47 Greywacke, arkose, conglomerate
TRIASSIC	
11	TV 42 Basaltic greenstone
10	TGDM 42 Foliated hornblende granodiorite, quartz
	UPPER TRIASSIC
	LEWES RIVER GROUP
9	UTC 45 Limestone
MESOZOIC UNDIVIDED	
8	MQM 41 Porphyritic quartz monzonite
7	MGD 41 Granodiorite, quartz monzonite
6	MGM 41 Foliated hornblende granodiorite, quartz monzonite
PALEOZOIC UNDIVIDED	
5	PC 09 Limestone
4	PM 09 Amphibolite, schist, gneiss
3	PGDM 09 PELLY GNEISS: Foliated to gneissic granodiorite
CARBONIFEROUS AND PERMIAN	
2	CPSN 35 Schist, gneiss, includes BIG SALMON METAMORPHIC COMPLEX
HADRYNIAN AND CAMBRIAN	
1	HCSN 08 Schist, gneiss, quartzite

\*A mnemonic code assigned to rock types and recorded as part of field observations  
 Geological boundary . . . . .  
 Fault . . . . .  
 No analytical result . . . . .

Geological base and legend are derived from: Map 1398A, MACMILLAN RIVER, YUKON - DISTRICT OF MACKENZIE - ALASKA, NTS SHEET 105, 115. Compiled by H. Garbelise, D.J. Tempelman-Kluit, S.L. Blusson and R.B. Campbell, Geological Survey of Canada, Energy, Mines and Resources Canada, 1980. 1:1 000 000 scale

