

Geological Survey of Canada
 Resource Geophysics and Geochemistry Division

CONTRACTORS

Sample collection by Rogers Exploration Services Ltd., Whitehorse
 Sample preparation by Golder Associates, Ottawa
 Gold analysis by Chemex Labs Limited, Vancouver, B.C.

Sediment chemical analysis by Barringer Magenta Ltd., Rexdale, Ontario
 Water chemical analyses by Barringer Magenta Laboratories (Alberta) Ltd., Calgary

This map forms one of a series of maps released by the Geological Survey of Canada, Open Files 1217 to 1220. Each Open File consists of maps of various geochemical variables: 21 for stream sediment, 3 for stream water and 1 sample site location

Copies of map material and listings of field observations and analytical data, from which the material was prepared, may be available at users expense by application to:

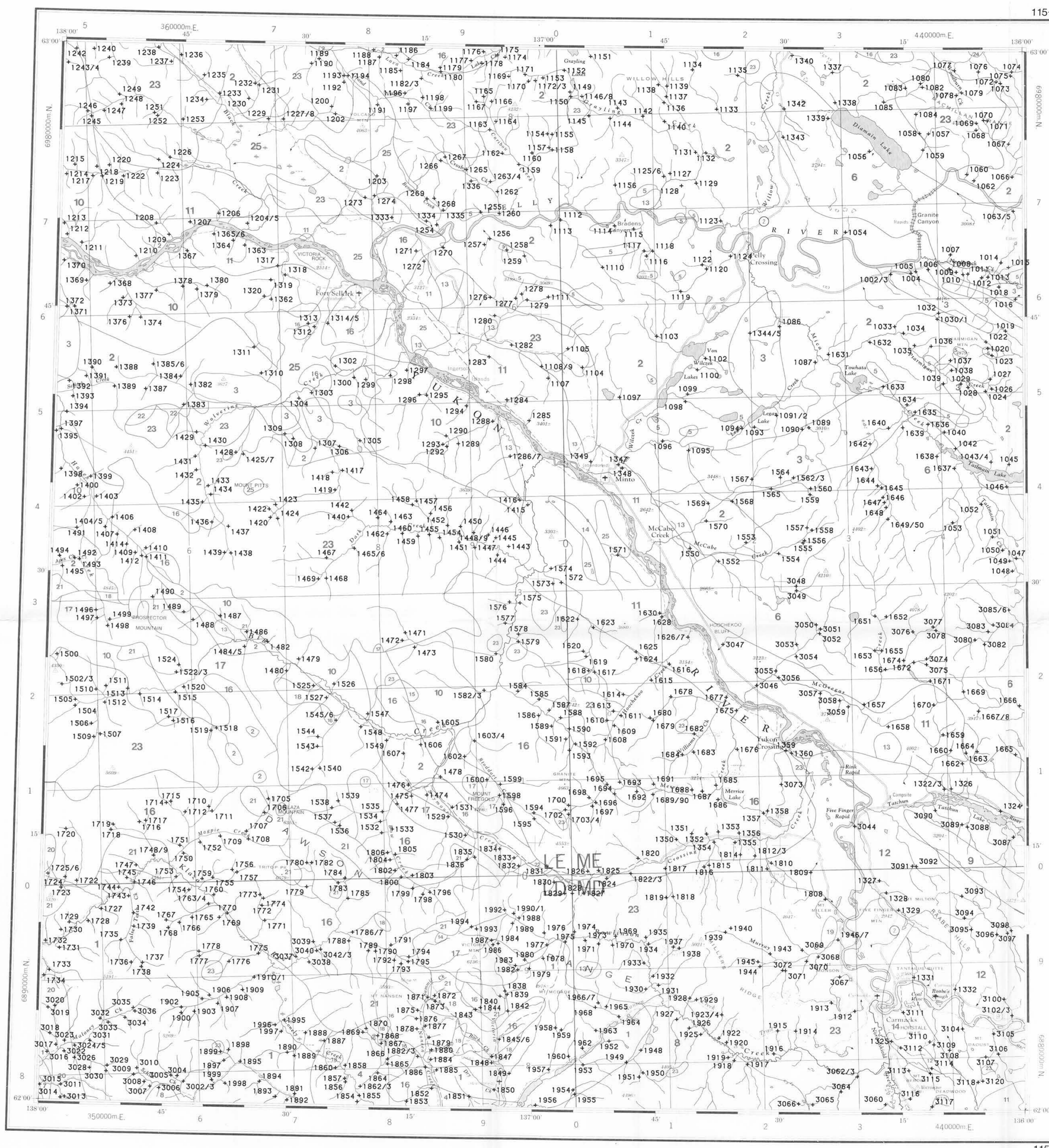
K.G. Campbell Corporation
 880 Wellington St.
 Bay 238
 Ottawa, Ontario
 K1R 6K7

The data are also available in digital form. For further information please contact:

The Director
 Computer Science Centre
 Department of Energy, Mines and Resources
 Ottawa, Ontario
 KIA 0E4

- SURFICIAL GEOLOGY**
- Undivided surficial deposits; alluvium, glacial till and moraine, outwash and ice contact deposits, volcanic ash, loess, colluvium
 - Glaciers and permanent snowfields
 - Bedrock exposures; includes discontinuous veneer of undivided glacial drift
- SYMBOLS**
- Surficial deposit boundary
 - Limit of Pre-Reid ice advance
 - Limit of McConnell (Ruby) ice advance
 - Meltwater channels, outwash deposits, indicating direction of flow
 - Glaciation lineation parallel to ice flow direction, includes fluting, crag and tail, roches moutonnées and drumlinoid forms, direction of flow indicated
 - Drumlinoid form, direction of movement inferred, not inferred

Sources of information:
 Bostock, H.S. (1936) Geology - CARMACKS SHEET, Yukon Territory, Canada Department of Mines, Bureau of Economic Geology, Geological Survey, Map 340A (1:253,440 scale).
 Hughes, O.L., Campbell, R.B., Muller, J.E., and Wheeler, J.O. (1968) Glacial Map of Yukon Territory, Geological Survey of Canada, Map 6-1968, (1:1 000 000 scale) to accompany GSC Paper 68-34
 Prest, V.K., Grant, D.R., and Rampton, V.N. (1967) Glacial Map of Canada, Geological Survey of Canada (1:5 000 000 scale)



LEGEND

QUATERNARY	RECENT	SELKIRK GROUP			
	25	RS 64*	Basalt, andesite flows, breccia, tuff		
	TERTIARY	LATE TERTIARY	24	LTG 62	Rhyolite porphyry, granite, granodiorite
		OLIGOCENE AND MIOCENE	23	OMCV 60	Andesite, basalt, breccia
	OLIGOCENE	CARMACKS GROUP			
	CENOZOIC	22	OCS 60	Conglomerate, sandstone, shale	
		EOCENE	21	EMN 59	Acid to intermediate tuff, breccia
		MOUNT NANSEN GROUP			
		LOWER TERTIARY	20	TFP 58	Feldspar porphyry dykes, flows
		EARLY TERTIARY	19	TVB 58	Basalt
CRETACEOUS	18	ETF 57	Granite and syenite porphyry, rhyolite		
	17	KY 52	Syenite, monzonite		
		KQM 52	Quartz monzonite, granodiorite; monzonite, alaskite		
	JURASSIC AND CRETACEOUS	DEZADEASH GROUP	15	JKD 51	Argillite, greywacke, conglomerate, volcanics
		JKT 51		TANTALUS: Conglomerate, siltstone, arkose, coal	
		JKDI 51		Diorite, hornblende diorite	
		JURASSIC	12	JL 47	Greywacke, arkose, conglomerate
		11		TV 42	Basaltic greenstone
	MESOZOIC	TRIASSIC	10	TGM 42	Foliated hornblende granodiorite, quartz
		UPPER TRIASSIC			
LEWES RIVER GROUP		9	UTC 45	Limestone	
MESOZOIC UNDIVIDED					
8		MM 41	Porphyritic quartz monzonite		
7	MGD 41	Granodiorite, quartz monzonite			
PALEOZOIC UNDIVIDED	6	MDN 41	Foliated hornblende granodiorite, quartz monzonite		
	5	PC 09	Limestone		
		PM 09	Amphibolite, schist, gneiss		
	4	PGDN 09	PELLY GNEISS: Foliated to gneissic granodiorite		
	CARBONIFEROUS AND PERMIAN	2	CPSN 35	Schist, gneiss, includes BIG SALMON METAMORPHIC COMPLEX	
HADRNYIAN AND CAMBRIAN		1	HCSN 08	Schist, gneiss, quartzite	

*A mnemonic code assigned to rock types and recorded as part of field observations

Geological boundary
 Fault
 No analytical result

Geological base and legend are derived from: Map 1398A, MACMILLAN RIVER, YUKON - DISTRICT OF MACKENZIE - ALASKA, NTS SHEET 105, 115. Compiled by H. Gabrielse, D.J. Tempeiman-Kluit, S.L. Blusson and R.B. Campbell, Geological Survey of Canada, Energy, Mines and Resources Canada, 1980. 1:1 000 000 scale

SAMPLE LOCATION
 GSC OPEN FILE 1220

REGIONAL GEOCHEMICAL RECONNAISSANCE MAP 95-1985
 CANADA-YUKON
 MINERAL DEVELOPMENT AGREEMENT (1984-89)
 STREAM SEDIMENT AND WATER GEOCHEMICAL SURVEY
 SOUTHERN YUKON TERRITORY, 1985

Scale 1:250 000

Universal Transverse Mercator Projection
 Crown Copyrights reserved

Base map at the same scale published by the Surveys and Mapping Branch in 1974
 Streams were revised by the Geological Survey of Canada for this edition