

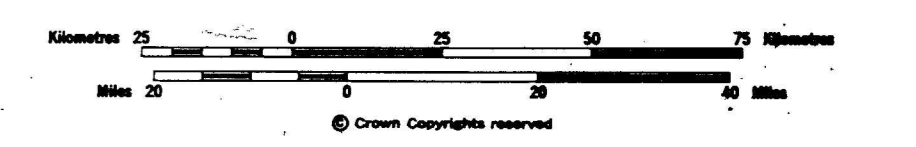
**MACKENZIE CORRIDOR**  
**MIDDLE DEVONIAN**  
**FACIES BELTS**

INTERPRETED BY:  
 G.K. WILLIAMS / I.S.P.G. CALGARY

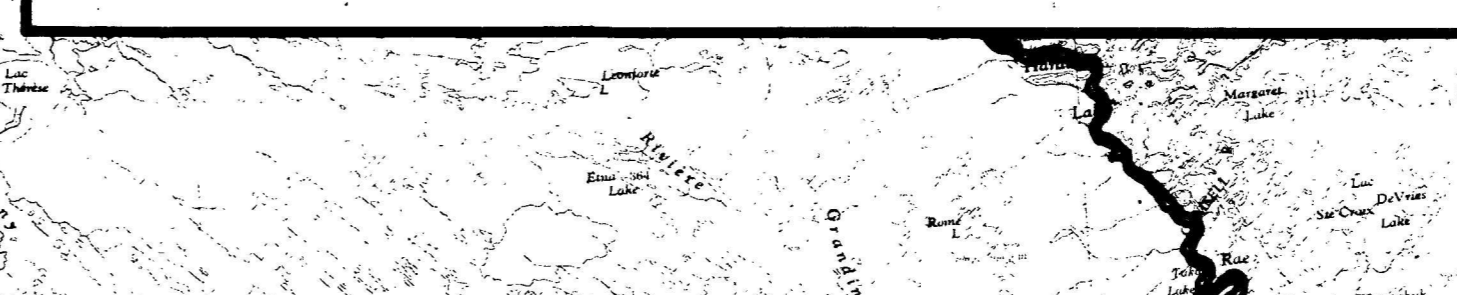
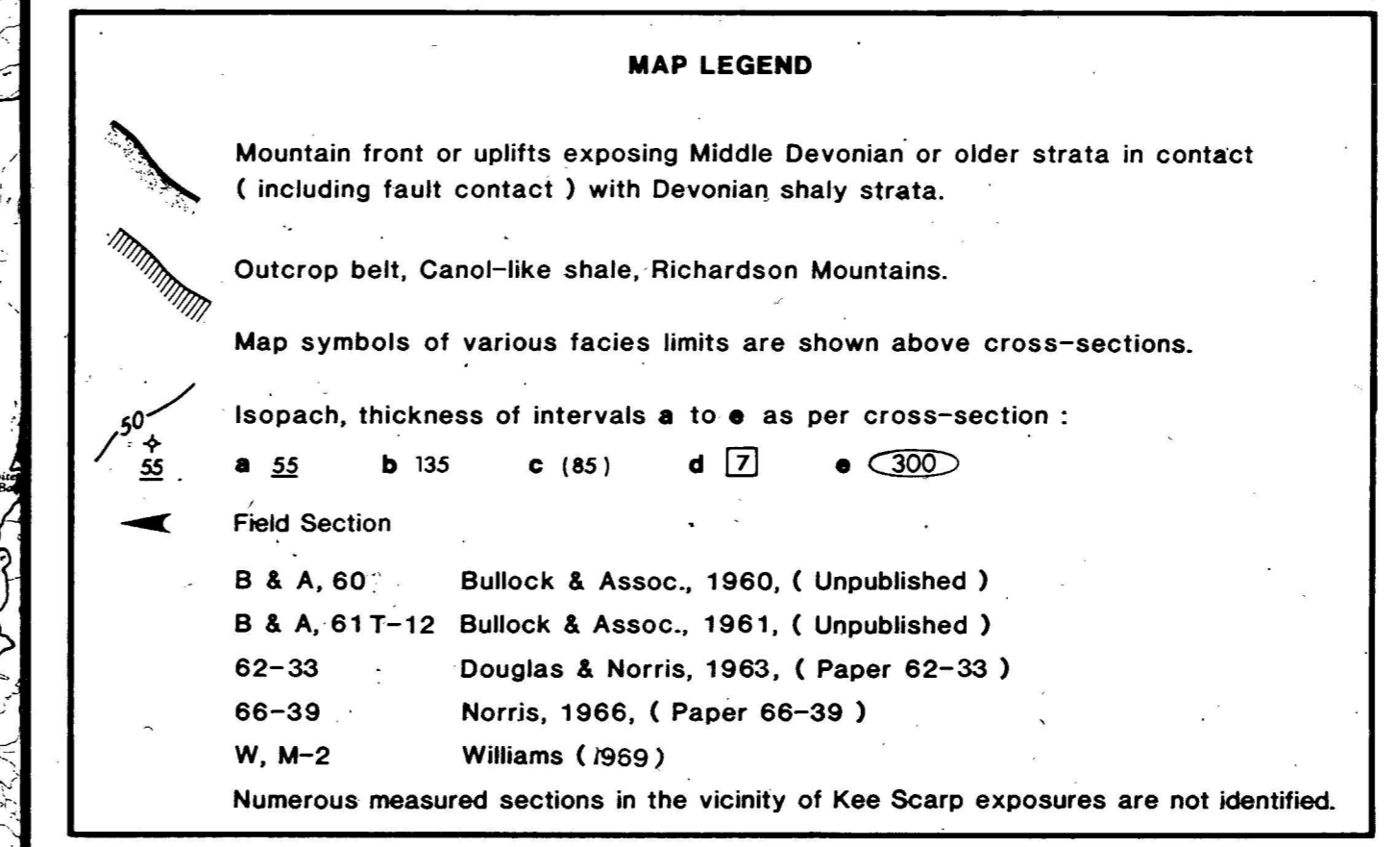
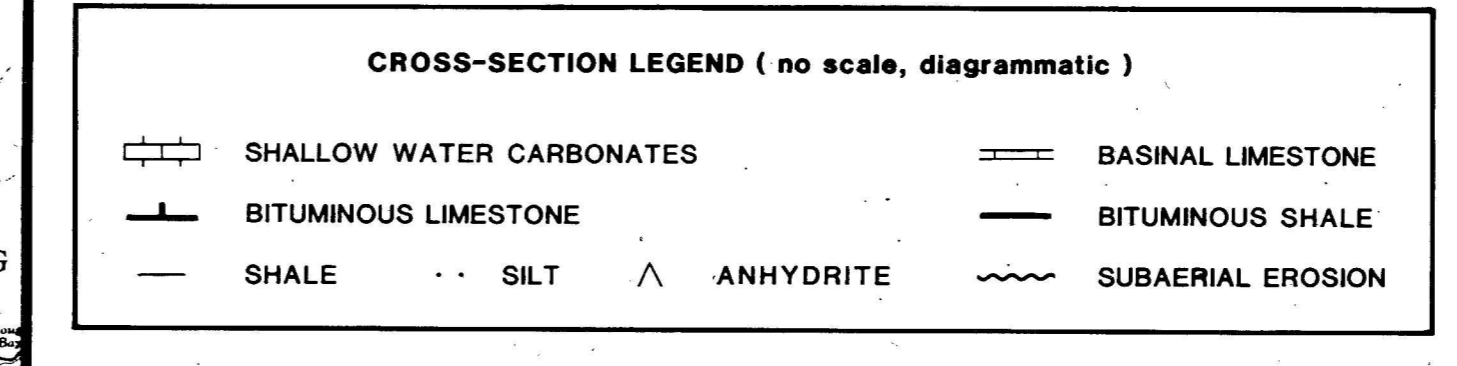
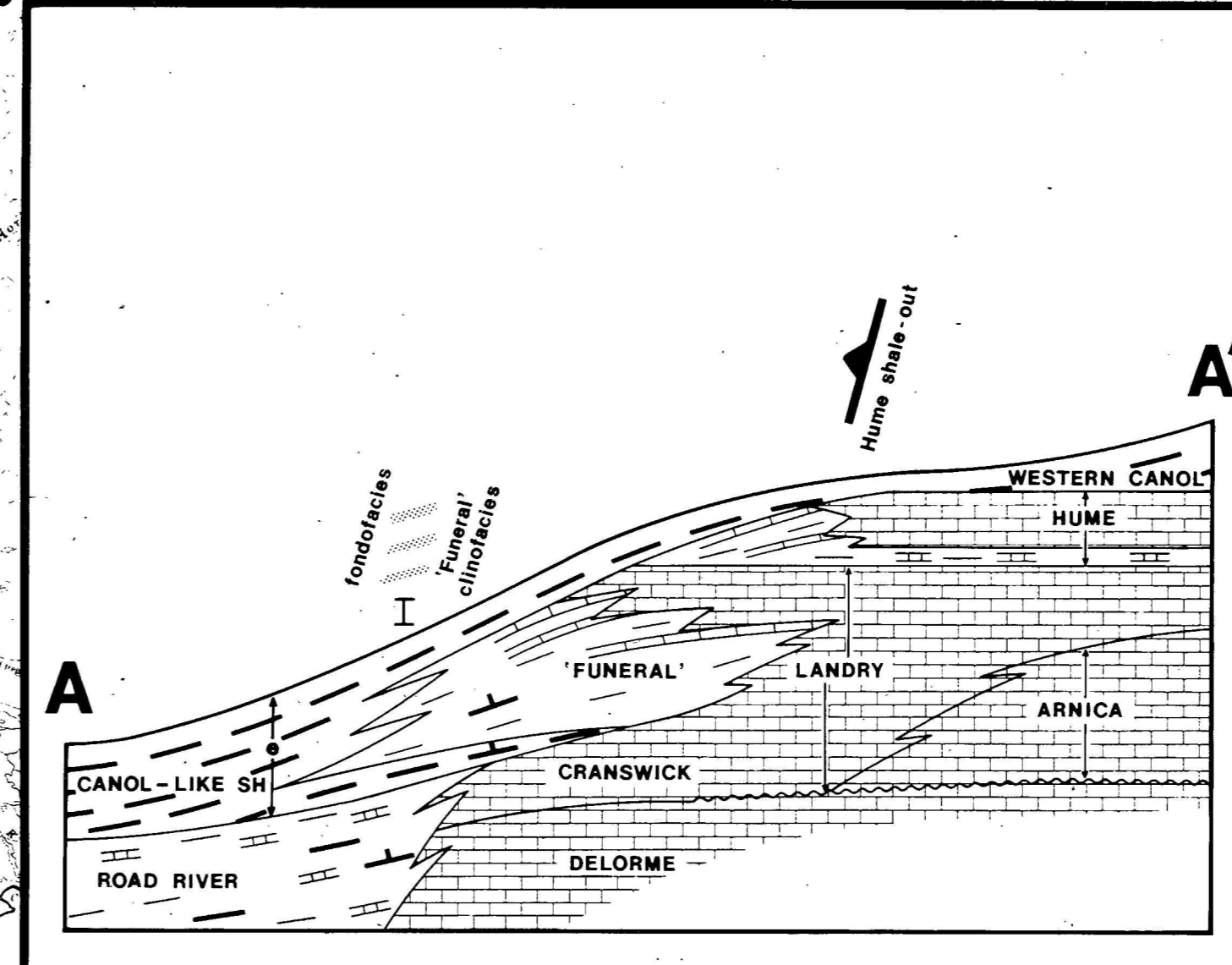
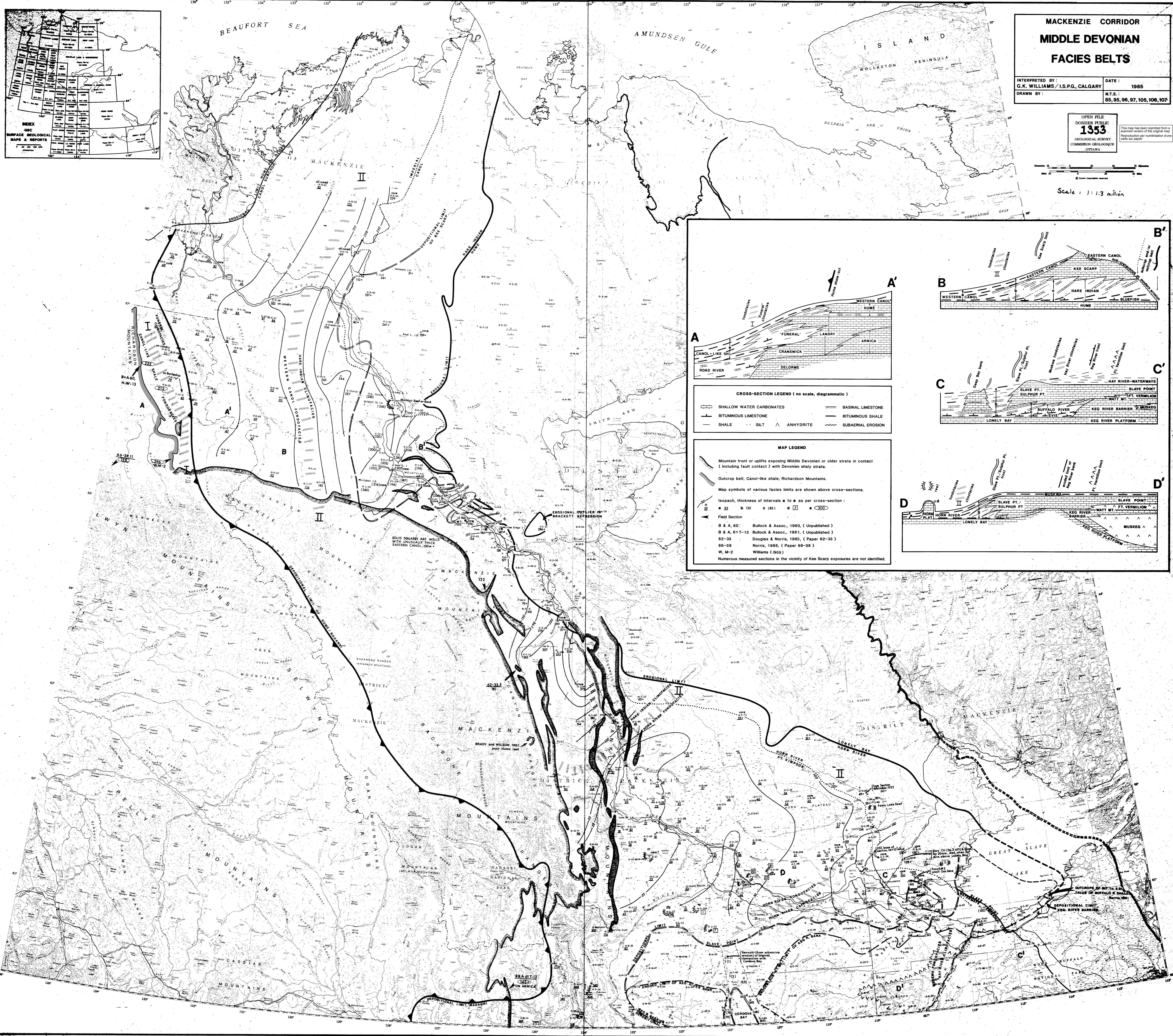
DATE:  
 1985

DRAWN BY:  
 M.T.S.  
 85, 95, 96, 97, 105, 106, 107

OPEN FILE  
 DOSSIER PUBLIC  
**1353**  
 GEOLOGICAL SURVEY  
 COMMISSION GEOLOGIQUE  
 OTTAWA



Scale: 1:1.3 million



**CROSS-SECTION LEGEND (no scale, diagrammatic)**

SHALLOW WATER CARBONATES  
 BITUMINOUS LIMESTONE  
 SHALE  
 SILT  
 ANHYDRITE  
 BASINAL LIMESTONE  
 BITUMINOUS SHALE  
 SUBAERIAL EROSION

**MAP LEGEND**

Mountain front or uplifts exposing Middle Devonian or older strata in contact (including fault contact) with Devonian shaly strata.  
 Outcrop belt, Canol-like shale, Richardson Mountains.  
 Map symbols of various facies limits are shown above cross-sections.  
 Isopach, thickness of intervals a to e as per cross-section:  
 a 25 b 135 c (85) d 7 e 300  
 Field Section:  
 B & A, 60 Bullock & Assoc., 1960, (Unpublished)  
 B & A, 61T-12 Bullock & Assoc., 1961, (Unpublished)  
 62-33 Douglas & Norris, 1963, (Paper 62-33)  
 66-39 Norris, 1966, (Paper 66-39)  
 W, M-2 Williams (1969)  
 Numerous measured sections in the vicinity of Kee Scarp exposures are not identified.

This map has been reprinted from a scanned version of the original map. Reproduction for non-commercial use only. For paper.