

SURFICIAL GEOLOGY

- Thermokarst depression developed on alluvial floodplain
- Organic deposits mantling lacustrine floodplain of silt and clay, or less commonly, moraine or eolian deposits
- Undivided surficial deposits; includes alluvium, glacial till, glacioluvial and glaciolacustrine deposits, ice contact deposits, colluvium, volcanic ash, loess, and scattered bedrock exposures.
- Glacial ice, snow, and firn veneer with seasonal bedrock exposures.
- Bedrock exposures; includes discontinuous veneer of undivided glacial drift, local alpine glaciation features.

Symbols

- Surficial deposit boundary
- Major meltwater channels, outwash deposits, indicating direction of flow
- Glacial lineation parallel to ice flow direction, includes fluting, crag and tail, roches moutonnées and drumlinoid forms, direction of flow indicated
- Drumlinoid form; rock drumlin, crag and tail, fluted bedrock on till, direction of movement inferred, not inferred
- Esker, direction of flow indicated

Sources of information:
 Hughes, G.L., Campbell, R.B., Muller, J.E., and Wheeler, J.O. (1968) Glacial Map of Yukon Territory, Geological Survey of Canada, Map 6-1968, (1:1 000 000 scale) to accompany GSC Paper 68-34.
 Muller, J.E. (1966) Geology Klauane Lake - Yukon Territory, Geological Survey of Canada Map 1177A, (1:253 440 scale), to accompany GSC Memoir 340.
 Prest, V.K., Grant, D.R., and Rampton, V.N. 19167) Glacial Map of Canada, Geological Survey of Canada (1:5 000 000 scale).
 Rampton, V.N. (1977) Surficial Geology and Geomorphology, Burwash Creek - Yukon Territory, Geological Survey of Canada, Map 6-1978, 1:100 000 scale.
 Surficial Geology and Geomorphology, Generc River - Yukon Territory, Geological Survey of Canada, Map 7-1978, 1:100 000 scale.
 Surficial Geology and Geomorphology, Congdon Creek - Yukon Territory, Geological Survey of Canada, Map 8-1978, 1:100 000 scale.

Geological Survey of Canada
 Mineral Resources Division
 Exploration Geochemistry Subdivision

CONTRACTORS

Sample collection by Monaghan Delph Miller Limited, Don Mills, Ontario
 Sample preparation by Golder Associates, Ottawa

Sediment chemical analyses by Bondar Clegg and Company Ltd., Ottawa, Ontario

Au analyses by Chemex Labs Limited, Vancouver
 Water chemical analyses by Barringer Magenta Laboratories (Alberta) Ltd., Calgary

Copies of map material and listings of field observations, analytical data and methods, from which the open file was prepared, are available from:

K.G. Campbell Corporation
 880 Wellington St.
 Bay 238
 Ottawa, Ontario
 K1R 6K7

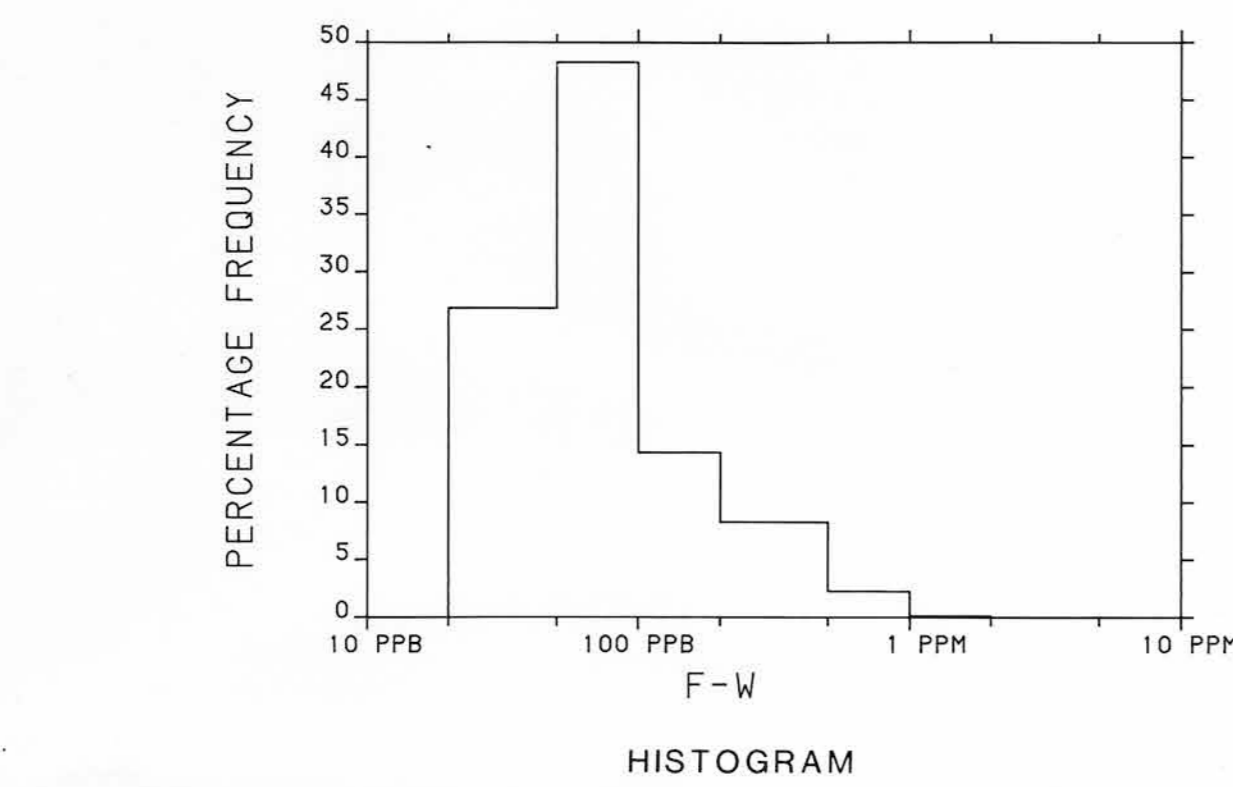
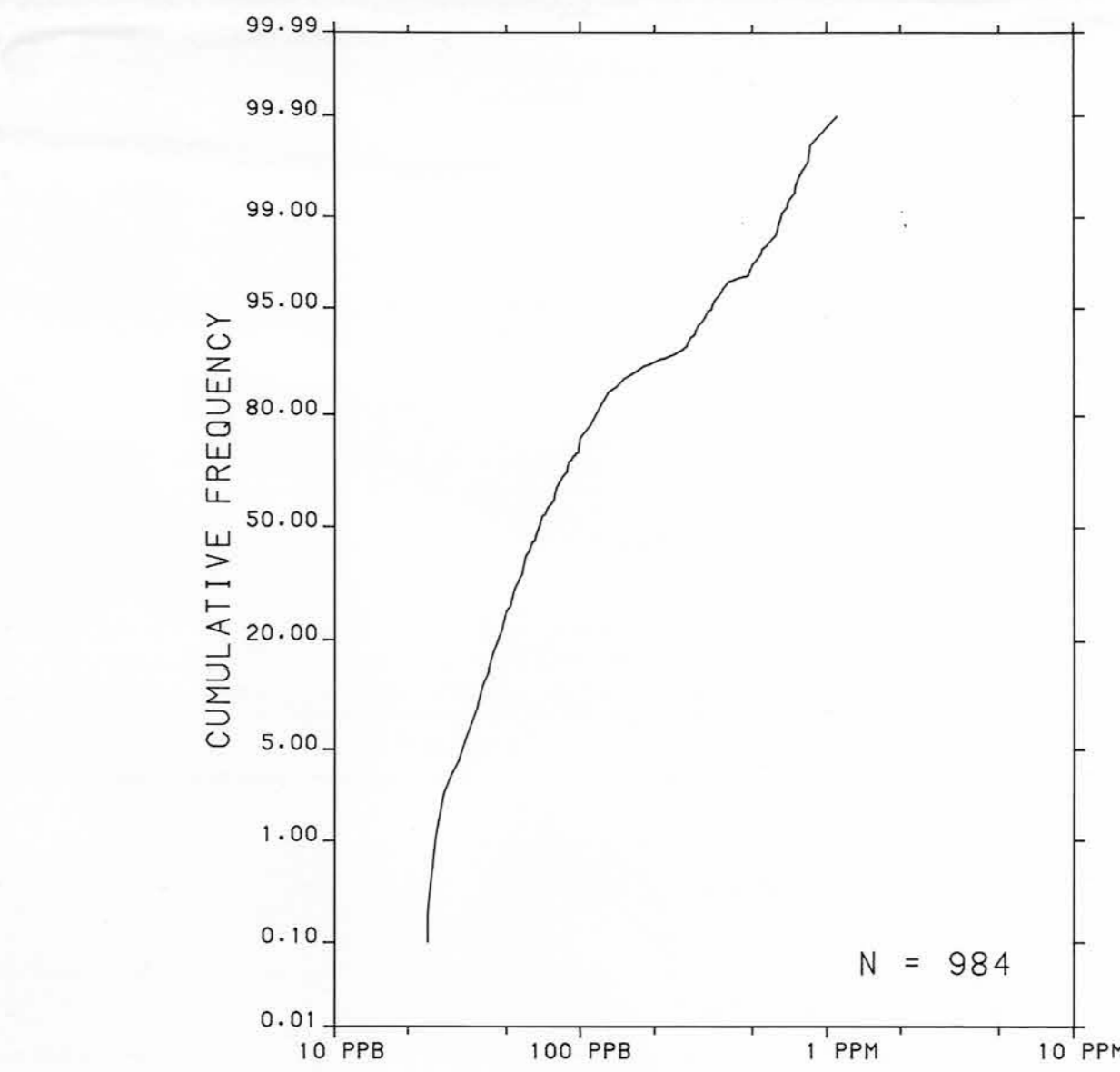
Digital data are available on IBM-PC compatible diskette from:

Geological Survey of Canada
 Publications Distribution
 601 Booth St.
 Ottawa, Ontario K1A 0E8
 Tel.: (613) 995-4342

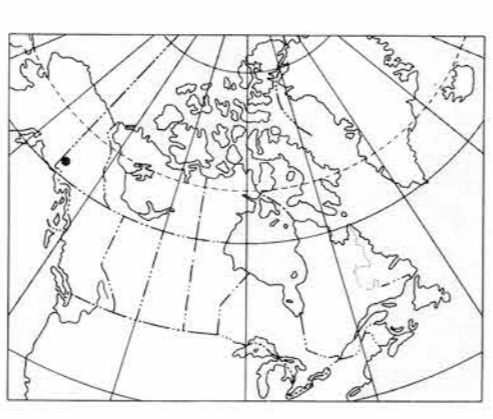
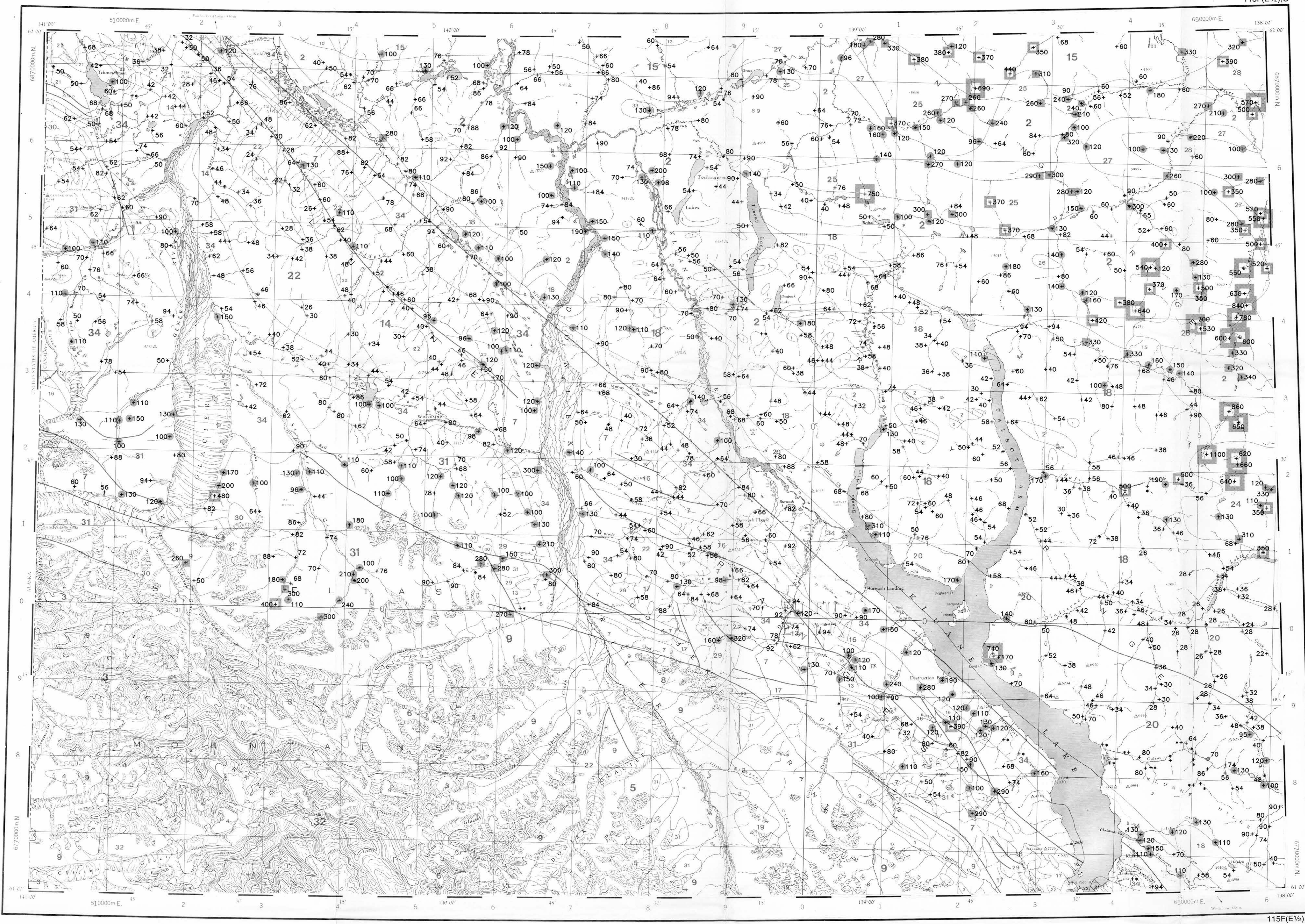


Contribution to the Canada/Yukon Subsidiary Agreement on Mineral Resources 1985-1989 under the Canada/Yukon Economic Development Agreement

The regional geochemical trend map displayed above utilized a moving weighted average using an inverse distance function (1/d²) to filter out minor irregularities and emphasize broad-scale regional features. Single point anomalies may be suppressed or eliminated, however, geological units which are chemically enriched, or large metallic deposits undergoing weathering would be expected to produce identifiable anomalies.



CONCENTRATION	FREQUENCY	N =	%
531 to 1100	20	20	(2.0%)
341 to 530	29	29	(2.9%)
241 to 340	45	45	(4.6%)
95 to 240	196	196	(19.9%)
22 to 94	694	694	(70.5%)



Elevation in feet above mean sea level

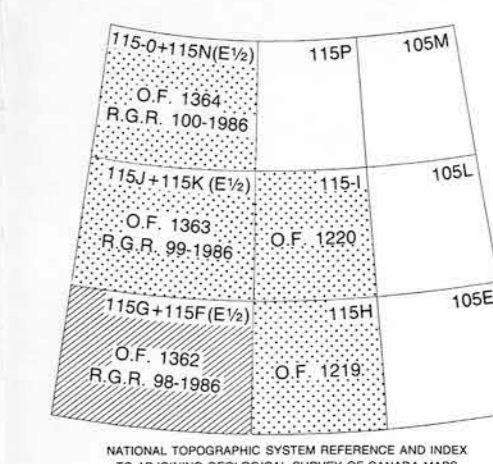
Mean magnetic declination 1987, 28°52' East, decreasing 13.3' annually. Readings vary from 28°52'E in the SE corner to 28°46'E in the NW corner of the map area

**FLUORIDE (ppb)
 STREAM WATERS**
 GSC OPEN FILE 1362
 REGIONAL GEOCHEMICAL RECONNAISSANCE MAP 98-1986
 CANADA - YUKON
 SUBSIDIARY AGREEMENT ON MINERAL RESOURCES (1985-1989)
 STREAM SEDIMENT AND WATER GEOCHEMICAL SURVEY
 SOUTH-WEST YUKON, 1986

Scale 1:250 000 - Échelle 1/250 000

Universal Transverse Mercator Projection
 Crown Copyrights reserved

Base map at the same scale published by the Surveys and Mapping Branch in 1961



- LEGEND**
- QUATERNARY**
- PLEISTOCENE AND RECENT
 - 34 Q5 64+ Glacial and surficial deposits
 - TERTIARY
 - 33 TQM 57 Quartz monzonite, granodiorite
 - 32 TGD 57 Quartz diorite, granodiorite.
 - MIOCENE AND PLEOCENE
 - 31 MPV 62 WRANGELL: Basalt, andesite pyroclastics, sediments
 - LATE TERTIARY
 - 30 LTF 62 Felsite, granite porphyry
 - OLIGOCENE AND MIOCENE
 - 29 OMA 61 AMPHITHEATRE: Sandstone, conglomerate, shale, coal
 - LOWER (?) TERTIARY
 - 28 TFP 58 Felsite porphyry dykes, flows
 - 27 TVO 58 Andesite, porphyritic basalt flows, dykes
 - EARLY TERTIARY
 - 26 ETG 57 Granodiorite, granite
 - 25 ETGA 57 Alaskite, granite, quartz monzonite
 - 24 ETOM 57 Granite, quartz monzonite
 - 23 FPPP 57 Felsite porphyry dykes
 - CRETACEOUS
 - 22 KSM 52 Granodiorite, quartz diorite, diorite, agmatite complex
 - JURASSIC AND CRETACEOUS
 - DEZADEASH GROUP
 - 21 JKD 51 Argillite, greywacke, conglomerate, volcanics
 - 20 JKN 51 KLWANE: Sericitic, biotitic schist, gneiss, amphibolite
 - 19 JKD 51 Granodiorite, quartz diorite, quartz monzonite, diorite
 - TRIASSIC
 - 18 TGD 42 RUBY RANGE: Granodiorite
 - UPPER TRIASSIC
 - 17 UTS 45 CHITSONE, MCCARTHY: Limestone, dolomite, shale
 - 16 UTN 45 NIKOLAI: Greenstone, basalt, andesite, limestone
 - MESOZOIC UNDIVIDED
 - 15 MGD 41 Granodiorite, quartz monzonite
 - PERMIAN AND TRIASSIC
 - 14 PTY 40 Greenstone, diorite
 - 13 PTB 40 Pyroxenite, serpentinite
 - PALEOZOIC AND MESOZOIC UNDIVIDED
 - 12 PMW 40 Basic to intermediate volcanic rocks
 - PALEOZOIC UNDIVIDED
 - 11 PM 09 NASINA: Graphitic quartzite, schist
 - 10 PTP 09 Chert, argillite, quartzite
 - 9 PS 09 Greywacke, argillite, limestone; local basalt, andesite, volcaniclastic sediments
 - EARLY PALEOZOIC
 - 8 EPUB 09 Gabro complex
 - PERMIAN
 - SKOLAI GROUP
 - 7 PS 36 Andesite, basalt, ultramafics, pyroclastics, phyllite, chert, limestone, conglomerate
 - PENNSYLVANIAN AND PERMIAN
 - 6 PPM 35 Quartz monzonite
 - 5 PPD 35 Granodiorite, diorite, agmatite complex
 - 4 PPD 35 Quartz diorite, diorite, granodiorite
 - DEVONIAN
 - 3 DC 25 Limestone, marble
 - HADRYTIAN AND CAMBRIAN
 - 2 HCSN 08 Schist, gneiss, quartzite
 - HADRYTIAN
 - 1 HC 07 Crystalline limestone

*A mnemonic code assigned to rock types and recorded as part of field observations.

Geological boundary
 Fault
 No analytical result
 Field duplicate sample sites

Geological base and legend are derived from:
 Gabrielse, H., Tempelman-Kluit, D.J., Blusson, S.L. and Campbell, R.B. (1980) Map 1398, McMillan River, Yukon - District of Mackenzie - Alaska, NIS Sheet 109-110, Geological Survey of Canada, Energy, Mines and Resources Canada, 1:1,000,000 Scale.

This document was produced by scanning the original publication. Ce document est le produit d'une numérisation par balayage de la publication originale.