

SURFICIAL GEOLOGY

- Thermokarst depression developed on alluvial floodplain
- Organic deposits mantling lacustrine floodplain of silt and clay, or less commonly, moraine or eolian deposits
- Undivided surficial deposits; includes alluvium, glacial till, glaciofluvial and glaciolacustrine deposits and contact deposits, colluvium, volcanic ash, loess, and scattered bedrock exposures.
- Glacial ice, snow, and firn veneer with seasonal bedrock exposures.
- Bedrock exposures; includes discontinuous veneer of undivided glacial drift, local alpine glaciation features.

Symbols

- Surficial deposit boundary
- Major meltwater channels, outwash deposits, indicating direction of flow
- Glacial lineation parallel to ice flow direction, includes fluting, crag and tail, roches moutonees and drumlinoid forms, direction of flow indicated
- Drumlinoid form; rock drumlin, crag and tail, fluted bedrock or till, direction of movement inferred, not inferred
- Esker, direction of flow indicated

Sources of information:
Hughes, O.L., Campbell, R.B., Muller, J.E., and Wheeler, J.O. (1968) Glacial Map of Yukon Territory, Geological Survey of Canada, Map 6-1968, (1:1 000 000 scale) to accompany GSC Paper 68-34.
Muller, J.E. (1966) Geology Klwane Lake - Yukon Territory, Geological Survey of Canada Map 1177A, (1:253 440 scale), to accompany GSC Memoir 340.
Prest, V.K., Grant, D.R., and Rampton, V.N. (1967) Glacial Map of Canada, Geological Survey of Canada (1:5 000 000 scale).
Rampton, V.N. (1977) Surficial Geology and Geomorphology, Burwash Creek - Yukon Territory, Geological Survey of Canada, Map 6-1978, 1:100 000 scale.
Surficial Geology and Geomorphology, Generc River - Yukon Territory, Geological Survey of Canada, Map 7-1978, 1:100 000 scale.
Surficial Geology and Geomorphology, Congdon Creek - Yukon Territory, Geological Survey of Canada, Map 8-1978, 1:100 000 scale.

Geological Survey of Canada
Mineral Resources Division
Exploration Geochemistry Subdivision

CONTRACTORS

Sample collection by Monagan Delph Miller Limited, Don Mills, Ontario
Sample preparation by Golder Associates, Ottawa

Sediment chemical analyses by Bondar Clegg and Company Ltd., Ottawa, Ontario

All analyses by Chemex Labs Limited, Vancouver
Water chemical analyses by Barringer Regenta Laboratories (Alberta) Ltd., Calgary

Copies of map material and listings of field observations, analytical data and methods, from which the open file was prepared, are available from:

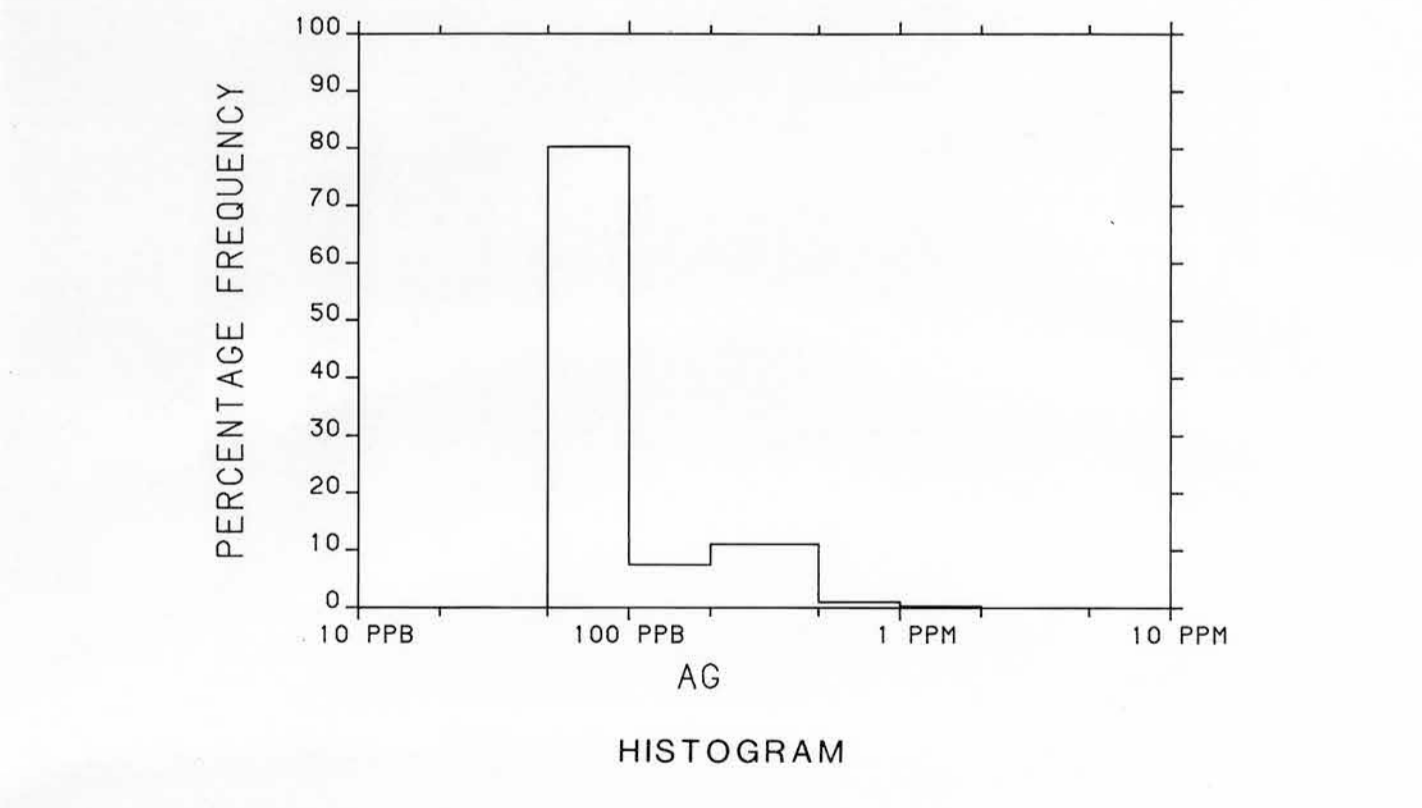
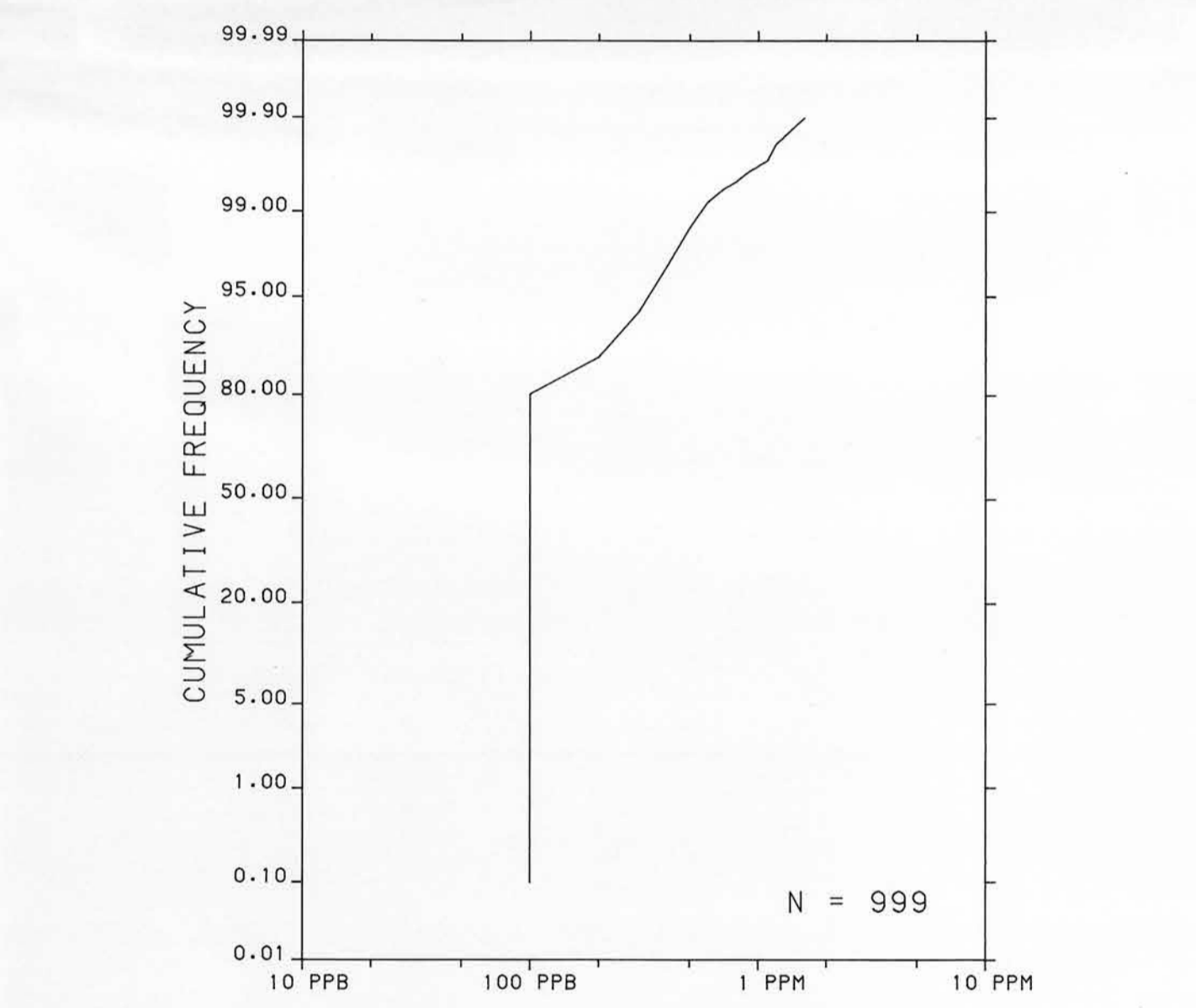
K.G. Campbell Corporation
880 Wellington St.
Bay 238
Ottawa, Ontario
K1R 6K7

Digital data are available on IBM-PC compatible diskette from:

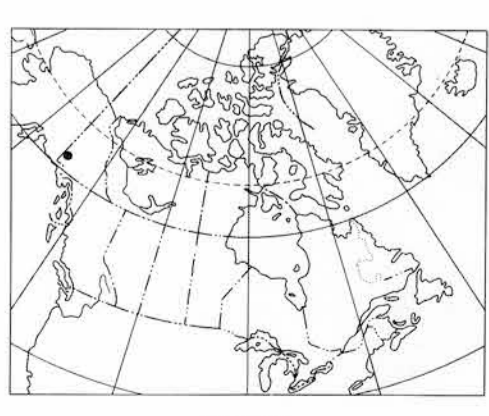
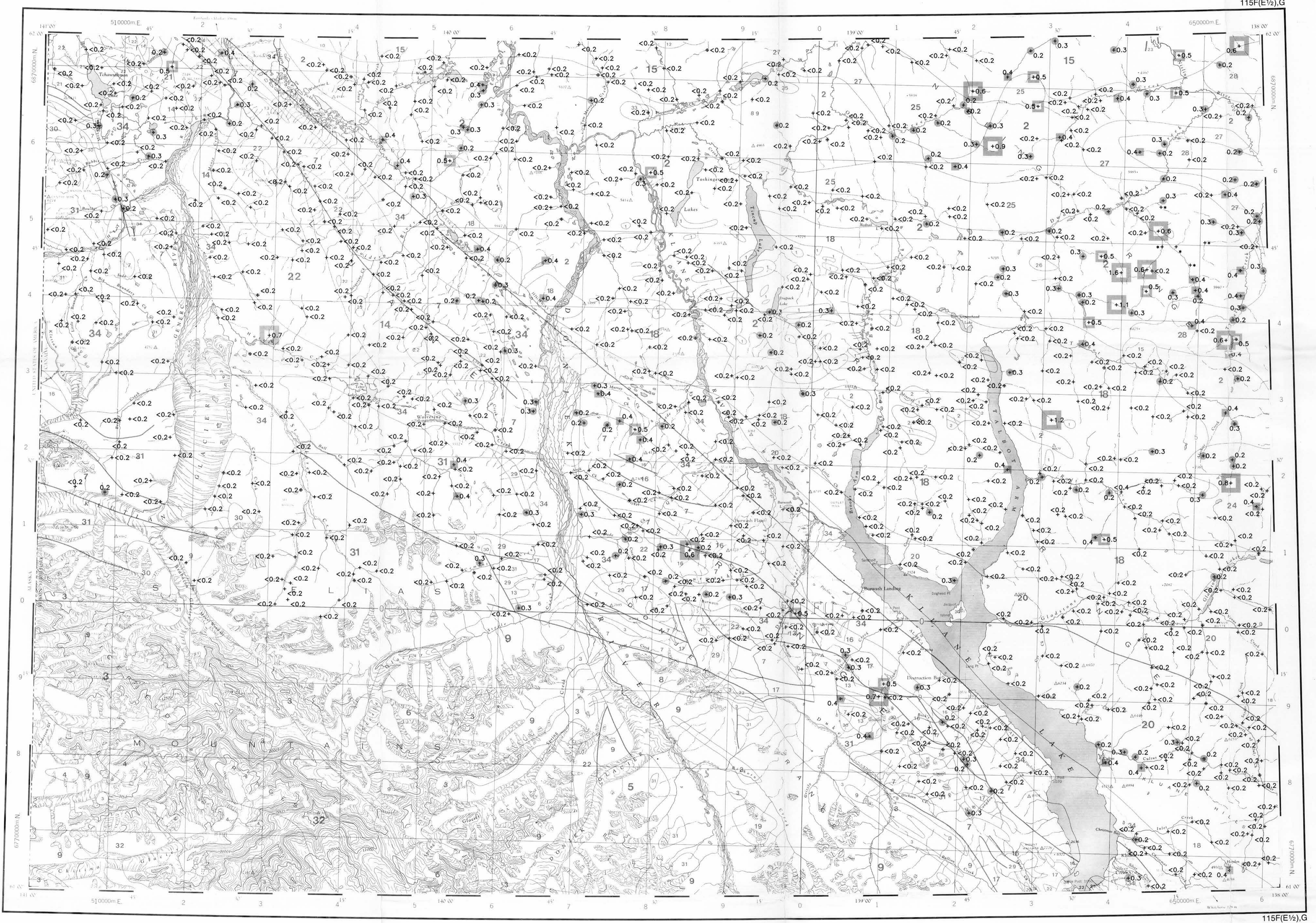
Geological Survey of Canada
Publications Distribution
601 Booth St.
Ottawa, Ontario K1A 0E8
Tel.: (613)995-4342

Contribution to the Canada/Yukon Subsidiary Agreement on Mineral Resources 1985-1989 under the Canada/Yukon Economic Development Agreement.

The regional geochemical trend map displayed above utilized a moving weighted average using an inverse distance function (1/d²) to filter out minor irregularities and emphasize broad-scale regional features. Single point anomalies may be suppressed or eliminated, however, geological units which are chemically enriched, or large metallic deposits undergoing weathering would be expected to produce identifiable anomalies.



CONCENTRATION	FREQUENCY
0.6 to 1.6	N = 13 (1.3%)
0.5	N = 15 (1.5%)
0.4	N = 35 (3.5%)
0.2 to 0.3	N = 133 (13.3%)
<0.2	N = 803 (80.4%)

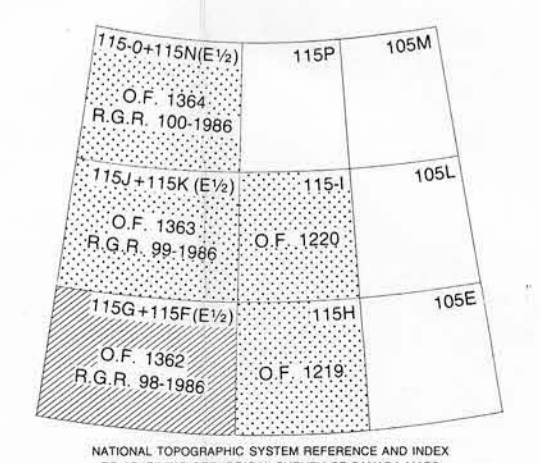


Elevation in feet above mean sea level
Mean magnetic declination 1987, 28°52' East, decreasing 13.3' annually. Readings vary from 28°52'E in the SE corner to 28°46'E in the NW corner of the map area

**SILVER (ppm)
STREAM SEDIMENTS**
GSC OPEN FILE 1362
REGIONAL GEOCHEMICAL RECONNAISSANCE MAP 98-1986
CANADA - YUKON
SUBSIDIARY AGREEMENT ON MINERAL RESOURCES (1985-1989)
STREAM SEDIMENT AND WATER GEOCHEMICAL SURVEY
SOUTH-WEST YUKON, 1986

Scale 1:250 000 - Echelle 1/250 000
Universal Transverse Mercator Projection
Projection transversale universelle de Mercator
© Crown Copyrights reserved
© Droits de la Couronne réservés

Base map at the same scale published by the Surveys and Mapping Branch in 1961



- LEGEND**
- QUATERNARY**
- PLEISTOCENE AND RECENT
 - 34 Q5 64* Glacial and surficial deposits
 - TERTIARY
 - 33 T5M 57 Quartz monzonite, granodiorite
 - 32 T5D 57 Quartz diorite, granodiorite
 - MIOCENE AND PLEIOCENE
 - 31 MPV 62 MANGELL: Basalt, andesite pyroclastics, sediments
 - LATE TERTIARY
 - 30 LTF 62 Felsite, granite porphyry
 - OLIGOCENE AND MIOCENE
 - 29 OMA 61 AMPHITHEATRE: Sandstone, conglomerate, shale, coal
 - LOWER (?) TERTIARY
 - 28 TFF 58 Feldspar porphyry dykes, flows
 - 27 TVD 58 Andesite, porphyritic basalt flows, dykes
 - EARLY TERTIARY
 - 26 ET6 57 Argillite, greywacke, granite
 - 25 ET6A 57 Alaskite, granite, quartz monzonite
 - 24 ET6M 57 Granite, quartz monzonite
 - 23 FPPP 57 Feldspar porphyry dykes
 - CRETACEOUS
 - 22 KSM 52 Granodiorite, quartz diorite, diorite, agmatite complex
 - JURASSIC AND CRETACEOUS
 - DEZADEASH GROUP
 - 21 JKD 51 Argillite, greywacke, conglomerate, volcanics
 - 20 JKL 51 KLWANE: Sericitic, biotitic schist, gneiss, amphibolite
 - 19 JKD 51 Granodiorite, quartz diorite, quartz monzonite, diorite
 - TRIASSIC
 - 18 T2D 42 RUBY RANGE: Granodiorite
 - UPPER TRIASSIC
 - 17 UTS 45 CHITISONE, MCCARTHY: Limestone, dolomite, shale
 - 16 UTM 45 NIKOLAI: Greenstone, basalt, andesite, limestone
 - MESOZOIC UNDIVIDED
 - 15 MGD 41 Granodiorite, quartz monzonite
 - PERMIAN AND TRIASSIC
 - 14 PTV 40 Greenstone, diorite
 - 13 PTB 40 Pyroxenite, serpentinite
 - PALEOZOIC AND MESOZOIC UNDIVIDED
 - 12 PMV 40 Basic to intermediate volcanic rocks
 - PALEOZOIC UNDIVIDED
 - 11 PM 09 NASINA: Graphitic quartzite, schist
 - 10 PTP 09 Chert, argillite, quartzite
 - 9 PS 09 Greywacke, argillite, limestone; local basalt, andesite, volcaniclastic sediments
 - EARLY PALEOZOIC
 - 8 EPB 09 Gabbro complex
 - PERMIAN
 - SKOLAI GROUP
 - 7 PS 36 Andesite, basalt, ultramafics, pyroclastics, phyllite, chert, limestone, conglomerate
 - PENNSYLVANIAN AND PERMIAN
 - 6 PPM 35 Quartz monzonite
 - 5 PPD 35 Granodiorite, diorite, agmatite complex
 - 4 PPQ 35 Quartz diorite, diorite, granodiorite
 - DEVONIAN
 - 3 DC 25 Limestone, marble
 - HARBRIAN AND CAMBRIAN
 - 2 HCSM 08 Schist, gneiss, quartzite
 - HARBRIAN
 - 1 HC 07 Crystalline limestone

*A mnemonic code assigned to rock types and recorded as part of field observations.

Geological boundary
Fault
No analytical result
Field duplicate sample sites

Geological base and legend are derived from: Gabrielse, H., Templeman-Kluit, D.J., Blusson, S.L. and Campbell, R.B. (1980) Map 1360A, Macmillan River, Yukon - District of Mackenzie - Alaska, NSC Sheet 105, 115, Geological Survey of Canada, Energy, Mines and Resources Canada, 1:11,000,000 Scale.