

The regional geochemical trend map displayed above utilized a moving weighted average using an inverse distance function (1/d²) to filter out minor irregularities and emphasize broad-scale regional features. Single point anomalies may be suppressed or eliminated, however, geological units which are chemically enriched, or large metallic deposits undergoing weathering would be expected to produce identifiable anomalies.

- SURFICIAL GEOLOGY**
- Thermokarst depression developed on alluvial floodplain
 - Pits and kettles developed on gravelly glaciofluvial plain
 - Organic deposits mantling lacustrine floodplain, glaciofluvial plain, or less commonly, moraine deposits
 - Undivided surficial deposits; includes alluvium, glacial till, glaciofluvial and glaciolacustrine deposits, ice contact deposits, colluvium, volcanic ash, loess, and scattered bedrock exposures.
 - Colluvium; poorly sorted blanket of rubble commonly <3 m thick overlying bedrock, ubiquitous in unglaciated terrain.
 - Bedrock exposures; includes discontinuous veneer of undivided glacial drift, local alpine glaciation features.

- Symbols**
- Surficial deposit boundary
 - Limit of Reid ice advance, maximum extent of glaciation
 - Major meltwater channels, outwash deposits, indicating direction of flow
 - Drumlinoid form; rock drumlin, crag and tail, fluted bedrock or till, direction of movement not inferred
 - Esker, direction of flow indicated

Sources of information:
 Hughes, O.L., Campbell, R.B., Muller, J.E., and Wheeler, J.O. (1968) Glacial Map of Yukon Territory, Geological Survey of Canada, Map 6-1968, (1:1,000,000 scale) to accompany GSC Paper 68-34.
 Prest, V.K., Grant, D.R., and Rampton, V.N. (1967) Glacial Map of Canada, Geological Survey of Canada (1:5,000,000 scale).
 Rampton, V.N. (1977) Surficial Geology and Geomorphology, Koidern Mountains - Yukon Territory, Geological Survey of Canada, Map 5-1978, 1:100,000 scale.
 (1977) Surficial Geology and Geomorphology, Mirror Creek - Yukon Territory, Geological Survey of Canada, Map 4-1978, 1:100,000 scale.
 Tempelman-Kluit, D.J. (1973) Geology, Snag - Yukon Territory, Geological Survey of Canada, Map 16-1973 (1:250,000 scale) to accompany GSC Paper 73-41.

Geological Survey of Canada
 Mineral Resources Division
 Exploration Geochemistry Subdivision

CONTRACTORS
 Sample collection by Monaghan Delph Miller Limited, Don Mills, Ontario
 Sample preparation by Golder Associates, Ottawa

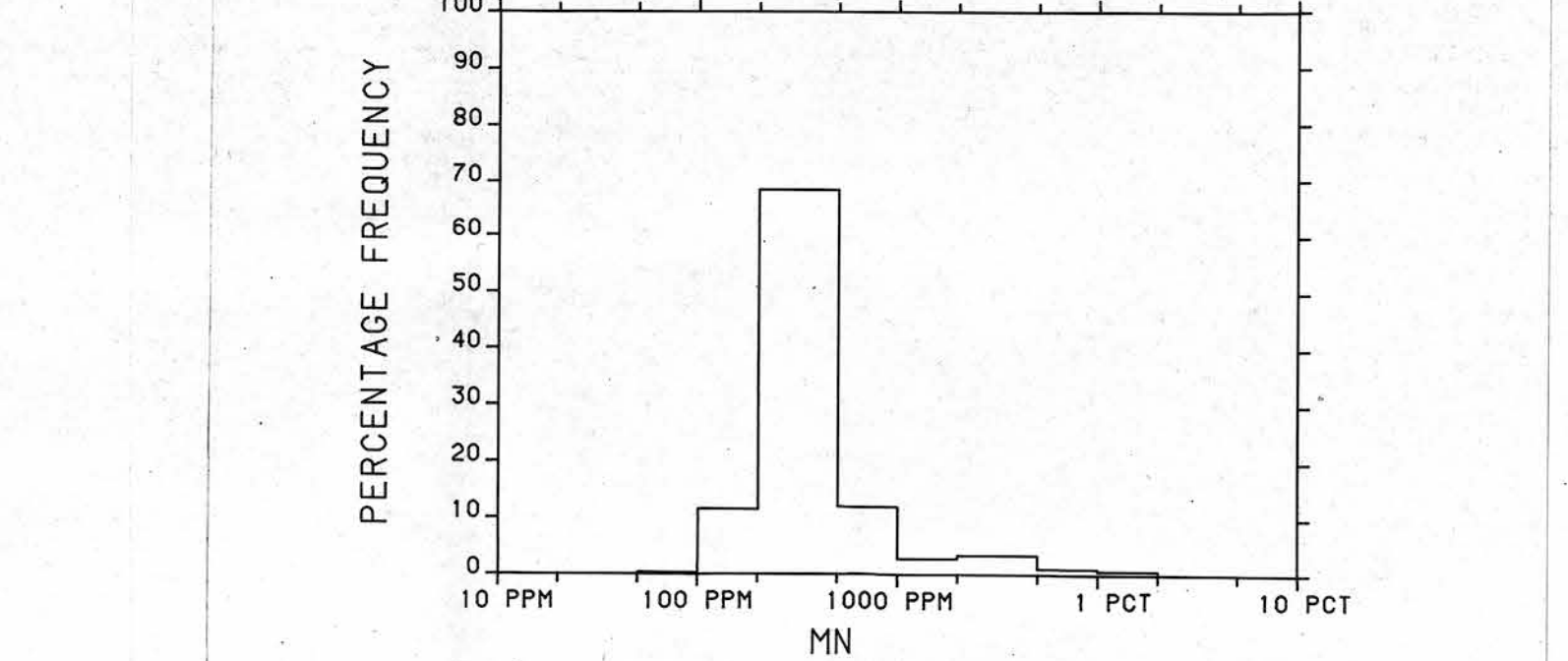
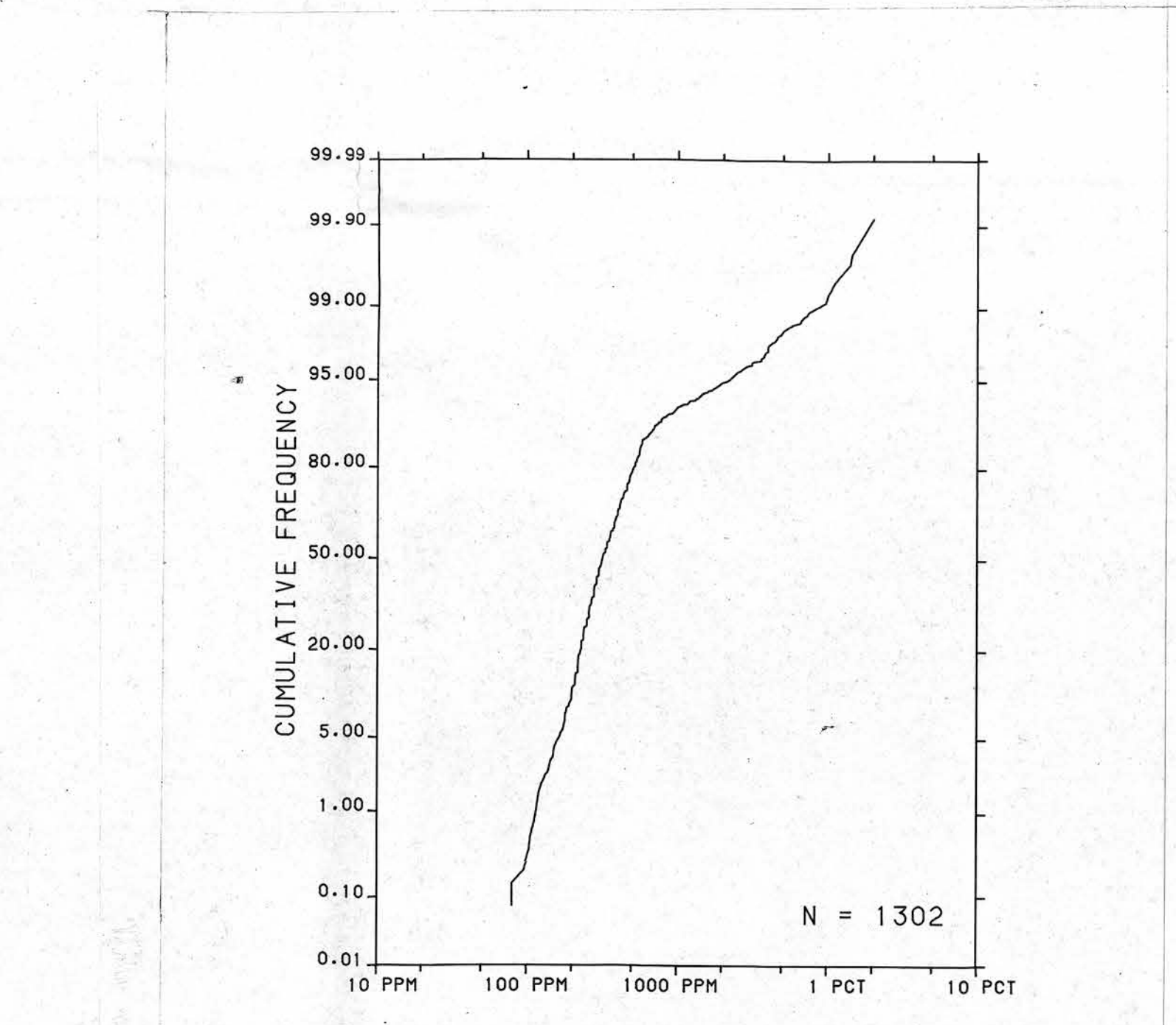
Sediment chemical analyses by Bondar Clegg and Company Ltd., Ottawa, Ontario

All analyses by Chemex Labs Limited, Vancouver
 Water chemical analyses by Barringer Magenta Laboratories (Alberta) Ltd., Calgary

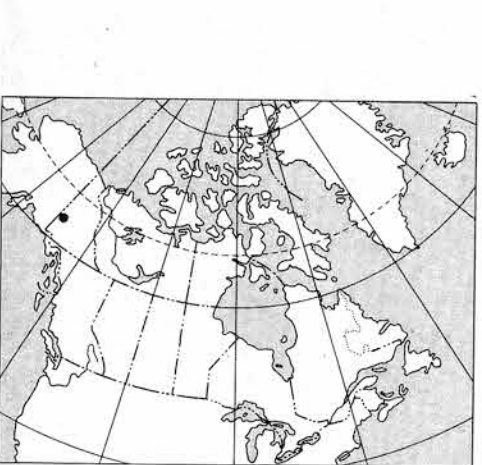
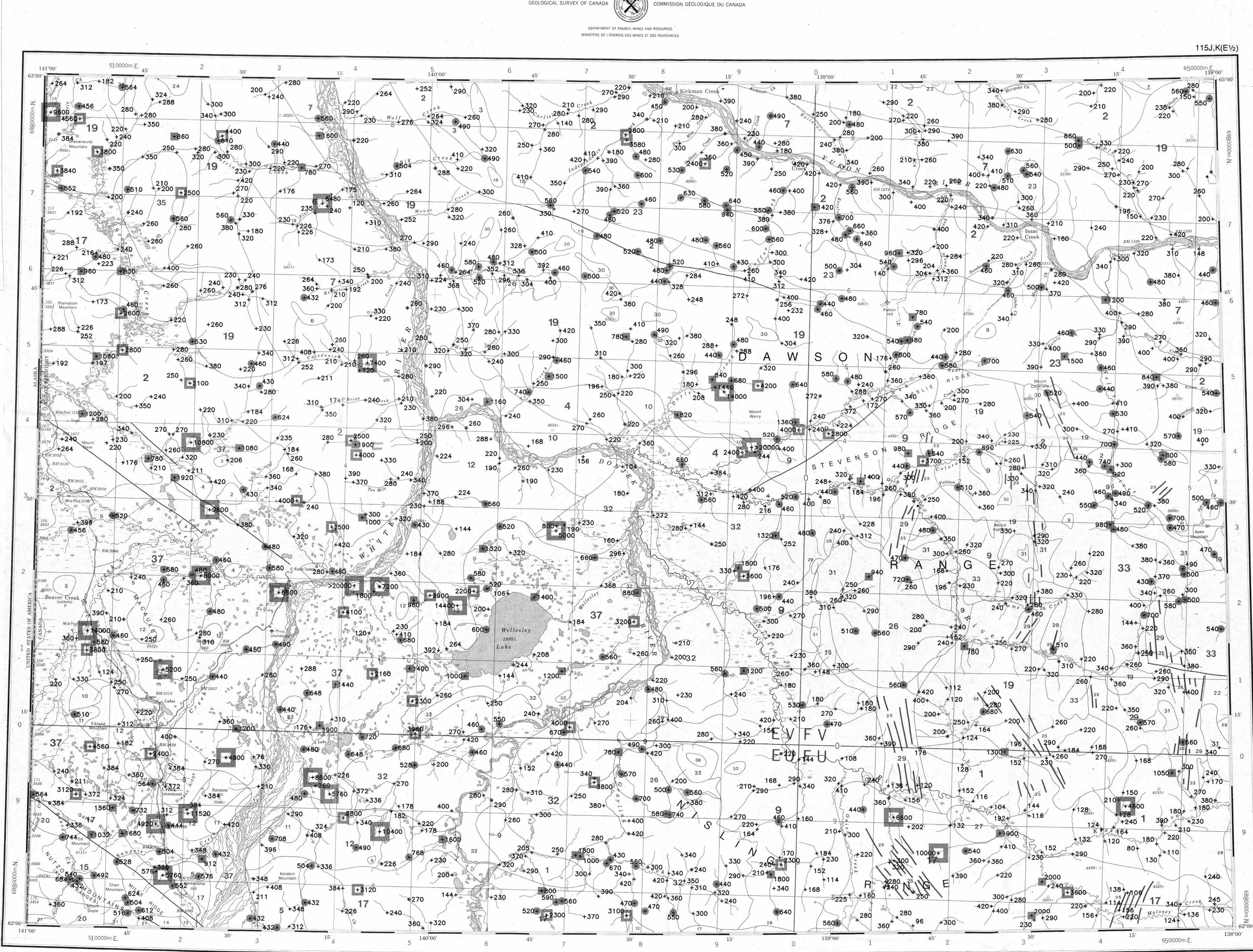
Copies of map material and listings of field observations, analytical data and methods, from which the open file was prepared, are available from:

K.G. Campbell Corporation
 880 Wellington St.
 Bay 238
 Ottawa, Ontario
 K1R 6K7

Digital data are available on IBM-PC compatible diskette from:
 Geological Survey of Canada
 Publications Distribution
 601 Booth St.
 Ottawa, Ontario K1A 0E8
 Tel.: (613)995-4342



CONCENTRATION	FREQUENCY	N =	%
4561 to >20000	+	25	1.9%
2001 to 4560	+	40	3.1%
769 to 2000	+	65	5.0%
421 to 768	+	240	18.4%
76 to 420	+	932	71.6%



Elevation in feet above mean sea level
 Mean magnetic declination 1987, 29°37' East, decreasing 13.4' annually. Readings vary from 29°37'E in the SE corner to 29°32'E in the NW corner of the map area

MANGANESE (ppm)
 STREAM SEDIMENTS
 GSC OPEN FILE 1363
 REGIONAL GEOCHEMICAL RECONNAISSANCE MAP 99-1986
 CANADA - YUKON
 SUBSIDIARY AGREEMENT ON MINERAL RESOURCES (1985-1989)
 STREAM SEDIMENT AND WATER GEOCHEMICAL SURVEY
 SOUTH-WEST YUKON, 1986

Base map at the same scale published by the Surveys and Mapping Branch in 1971

Scale 1:250 000 - Échelle 1/250 000
 Universal Transverse Mercator Projection
 Projection transverse universelle de Mercator
 © Crown Copyright reserved
 Droits de la Couronne réservés

This document was produced by scanning the original publication.
 Ce document est le produit d'une numérisation par balayage de la publication originale.

- LEGEND**
- QUATERNARY
- 37 Q5 64* Glacial and surficial deposits
 - 36 PPV 63 Olivine basalt
- PLEISTOCENE AND QUATERNARY
- 35 LTB 62 Rhyolite porphyry, granite, granodiorite
 - 34 OM 61 AMPHITHEATRE: Sandstone, conglomerate, shale, coal
 - 33 ONV 61 Andesite, basalt, breccia
 - 32 OND 61 DONJER: Tuff, breccia
- PLIOCENE AND PLEISTOCENE
- 31 ENM 59 Acid to intermediate tuff, breccia
 - 30 TC 58 CASINO: Tuff, ignimbrite, breccia
 - 29 TFP 58 Feldspar porphyry dykes, flow
 - 28 TWD 58 Andesite, porphyritic basalt flows and dykes
- LATE TERTIARY
- 27 ETG 57 Granodiorite, granite
 - 26 ETGA 57 Alaskite, granite, quartz monzonite
 - 25 FPPP 57 Feldspar porphyry dykes
- OLIGOCENE AND MIOCENE
- 24 KY 52 Syenite, monzonite
 - 23 KS 52 Granite
 - 22 KCM 52 Quartz monzonite, granodiorite; CASSIAR quartz monzonite, elaskite
 - 21 KGM 52 Granodiorite, quartz diorite, diorite, agmatite complex
- EARLY TERTIARY
- 20 JKD 51 Argillite, greywacke, conglomerate, volcanics
 - 19 TGM 42 Foliated hornblende granodiorite, quartz
- MEZOSIC UNDIVIDED
- 18 MM 41 Porphyritic quartz monzonite
 - 17 MD 41 Granodiorite, quartz monzonite
 - 16 MI 41 Diorite
- PERMIAN AND TRIASSIC
- 15 PTV 40 Greenstone, greywacke, shale, limestone
 - 14 PTY 40 Greenstone, diorite
 - 13 PTB 40 Pyroxenite, serpentinite
- PALEOZOIC AND MESOZOIC UNDIVIDED
- 12 PW 40 Basic to intermediate volcanic rocks
 - 11 PWB 40 Hornblende gabbro
 - 10 PWB 40 Ultramafic rocks
- PALEOZOIC UNDIVIDED
- 9 PM 09 NASINA: Graphitic quartzite, schist
 - 8 PC 09 Limestone
 - 7 PGM 09 PELLY GNEISS: Foliated to gneissic granodiorite
 - 6 PM 09 Amphibolite, schist, gneiss
 - 5 PTP 09 Chert, argillite, quartzite
 - 4 PV 09 Greenstone, amphibolite
- CARBONIFEROUS AND PERMIAN
- 3 CPS 35 Quartz-muscovite schist
 - 2 CPS 35 Schist, gneiss, includes BIG SALMON METAMORPHIC COMPLEX
 - 1 HCSM 08 Schist, gneiss, quartzite

*A mnemonic code assigned to rock types and recorded as part of field observations.

Geological boundary
 Fault
 No analytical result
 Field duplicate sample sites

Geological base and legend are derived from:
 Georielis, R., Tempelman-Kluit, D.J., Blusson, S.L., and Campbell, R.B. (1980) Map 1394A, MacMillan River, Yukon - District of Mackenzie - Alaska, NTS Sheet 105, 115, Geological Survey of Canada, Energy, Mines and Resources Canada. 1:1 000 000 Scale.