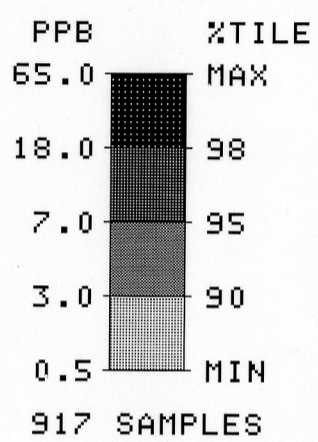
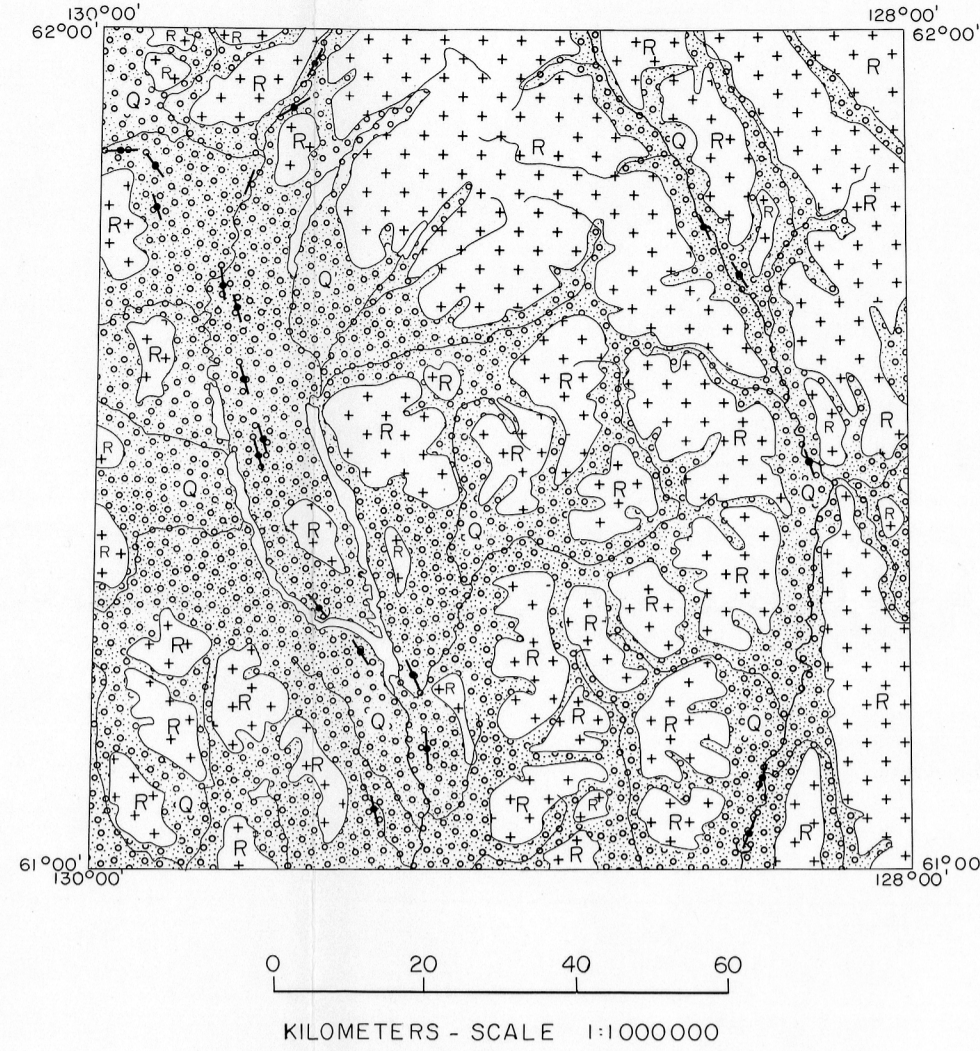


GOLD IN STREAM SEDIMENTS



CONCENTRATION	FREQUENCY
19 to 65	N = 15 (1.6%)
8 to 18	N = 30 (3.3%)
4 to 7	N = 46 (5.0%)
1 to 3	N = 75 (8.2%)
< 1	N = 751 (81.9%)



SYMBOLS

Surficial deposit boundary

Drumlinoid form; direction of glacial movement inferred, not inferred

SOURCES OF INFORMATION:

- Dyke, A.S. (1982) Surficial Geology of Frances Lake, Yukon Territory and District of Mackenzie (105 H), Geological Survey of Canada, Open File 895, 1:125,000 scale.
- Prest, V.K., Grant, D.R., and Rampton, V.N. (1967) Glacial Map of Canada, Geological Survey of Canada, Map 1253A, 1:5,000,000 scale.
- Roots, E.F., Green, L.H., Roddick, J.A., and Blusson, S.L. (1966) Geology - Frances Lake, Yukon Territory and District of Mackenzie, Geological Survey of Canada, Map 6-1966, scale one inch to four miles.

Geological Survey of Canada
Mineral Resources Division
Exploration Geochemistry Subdivision

CONTRACTORS

Stream sediment sample collection by Monaghan Delph Miller Limited, Don Mills, Ontario

Sample preparation by Golder Associates, Ottawa

Sediment chemical analyses by Bondar-Clegg and Company Ltd., Ottawa

Water and Au chemical analysis by Chemex Labs Limited, Vancouver

Geological base prepared by Terra Surveys Ltd., Ottawa

from published material supplied by Geological Survey of Canada

Copies of the Open File map material, element trend and symbol plots, listing of field observations, analytical data, descriptions of analytical methods, and digital data on IBM-PC compatible diskette are available by inquiring to:

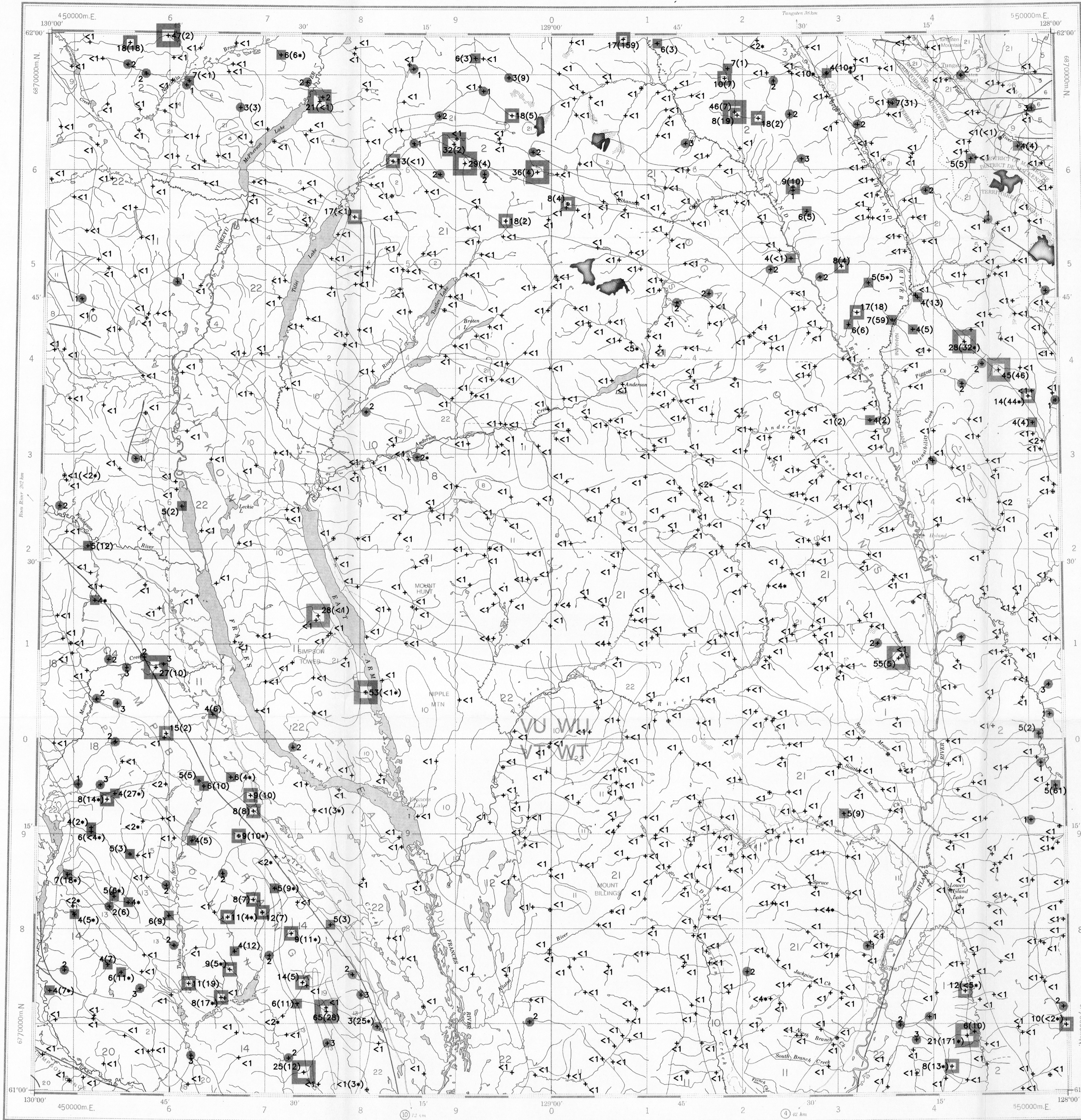
Geological Survey of Canada
Publications Distribution
501 Booth Street
Ottawa, Ontario K1A 0E8
Tel.: (613) 995-4342

Contribution to Canada - Yukon Mineral Development Agreement 1985 - 1989, a subsidiary agreement under the Economic and Regional Development Agreement. Project funded by the Geological Survey of Canada.

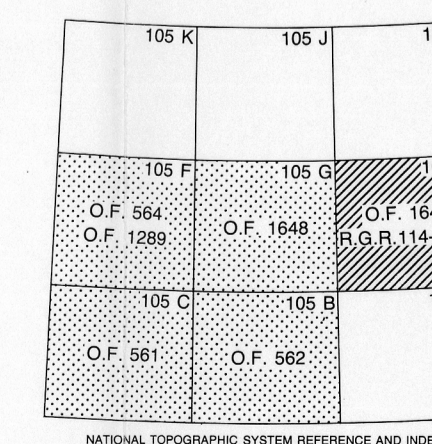
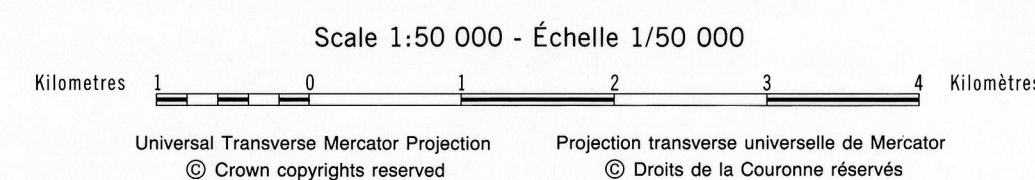
Elevation in feet above mean sea level

Mean magnetic declination 1988, 30° 42' East, decreasing 13.05' annually. Readings vary from 30° 11' in the SW corner to 31° 14' in the NE corner of the map area.

Geological Survey of Canada
Commission géologique du Canada



GOLD (ppb) STREAM SEDIMENTS
GSC OPEN FILE 1649
REGIONAL GEOCHEMICAL RECONNAISSANCE MAP 114-87
CANADA - YUKON
MINERAL DEVELOPMENT AGREEMENT (1985 - 1989)
STREAM SEDIMENT AND WATER GEOCHEMICAL SURVEY
EASTERN YUKON, 1987



LEGEND

- QUATERNARY
- PLEISTOCENE AND RECENT
- 22 Qs 64* Glacial and surficial deposits
- CRETACEOUS
- 21 Kqm 52 Quartz monzonite, granodiorite; Cassiar quartz monzonite, alaskite
- TRIASSIC
- 20 Tgdn 42 Foliated hornblende granodiorite, quartz
- PERMIAN AND TRIASSIC
- 19 PTub 40 Pyroxenite, serpentinite
- CARBONIFEROUS AND PERMIAN
- 18 CPAV 35 ANVIL RANGE GROUP: andesite, basalt, slate, chert, limestone
 - 17 CPsn 35 Schist, gneiss; includes BIG SALMON METAMORPHIC COMPLEX
 - 16 CPub 35 Serpentinite, diorite, pyroxenite, peridotite
 - 15 CPv 35 Andesite, basalt, chert, tuff
- PENNSYLVANIAN AND PERMIAN
- 14 PPAT 35 Chert
 - 13 PPAC 35 Limestone
- MISSISSIPPIAN
- 12 Mvt 31 Greenstone, chert, phyllite
- DEVONIAN AND MISSISSIPPIAN
- 11 DME 29 EARN GROUP: undivided; shale, chert arenite, conglomerate
- SILURIAN AND DEVONIAN
- 10 SDcq 24 Dolomite, quartzite, argillite
- ORDOVICIAN, SILURIAN AND LOWER DEVONIAN
- 9 OSDR 19 ROAD RIVER: black graptolitic shale, chert
- CAMBRIAN AND ORDOVICIAN
- 8 COP 14 Shale, limestone
 - 7 COR 14 RABBITKITTLE: limestone, siltstone
- LOWER CAMBRIAN
- 6 ICcq 11 Dolomite, salty dolomite, quartzite
 - 5 ICp 11 Quartzite, shale
- HADRYNIAN
- 4 Hc 07 Crystalline limestone
 - 3 Hp 07 Shale, phyllite
 - 2 Hap 07 Gritty quartzite, argillite, shale, phyllite
 - 1 Hsn 07 Schist, gneiss, quartzite

*A mnemonic code assigned to rock types and recorded as part of field observations.

- Geological boundary
- Fault
- No analytical results
- Field duplicate sample sites

Geology base and legend are derived from:
Gabrielse, H., Tempelman-Kluit, D.J., Blusson, S.L. and Campbell, R.B. (1980) Map 1398A, MacMillan River, Yukon - District of Mackenzie - Alaska, NTS Sheet 105, Geological Survey of Canada, Energy, Mines and Resources Canada. 1:1,000,000 Scale.

Contribution to the Canada/Yukon Subsidiary Agreement on Mineral Resources 1985-1989 under the Canada/Yukon Economic Development Agreement

Contribution à l'Entente auxiliaire Canada/Yukon sur l'exploitation minière 1985-89 dans le cadre de l'Entente Canada/Yukon sur le développement économique.



This document was produced by scanning the original publication. Ce document est le produit d'une numérisation par balayage de la publication originale.

GOLD (ppb) STREAM SEDIMENTS
GSC OPEN FILE 1649
EASTERN YUKON, 1987