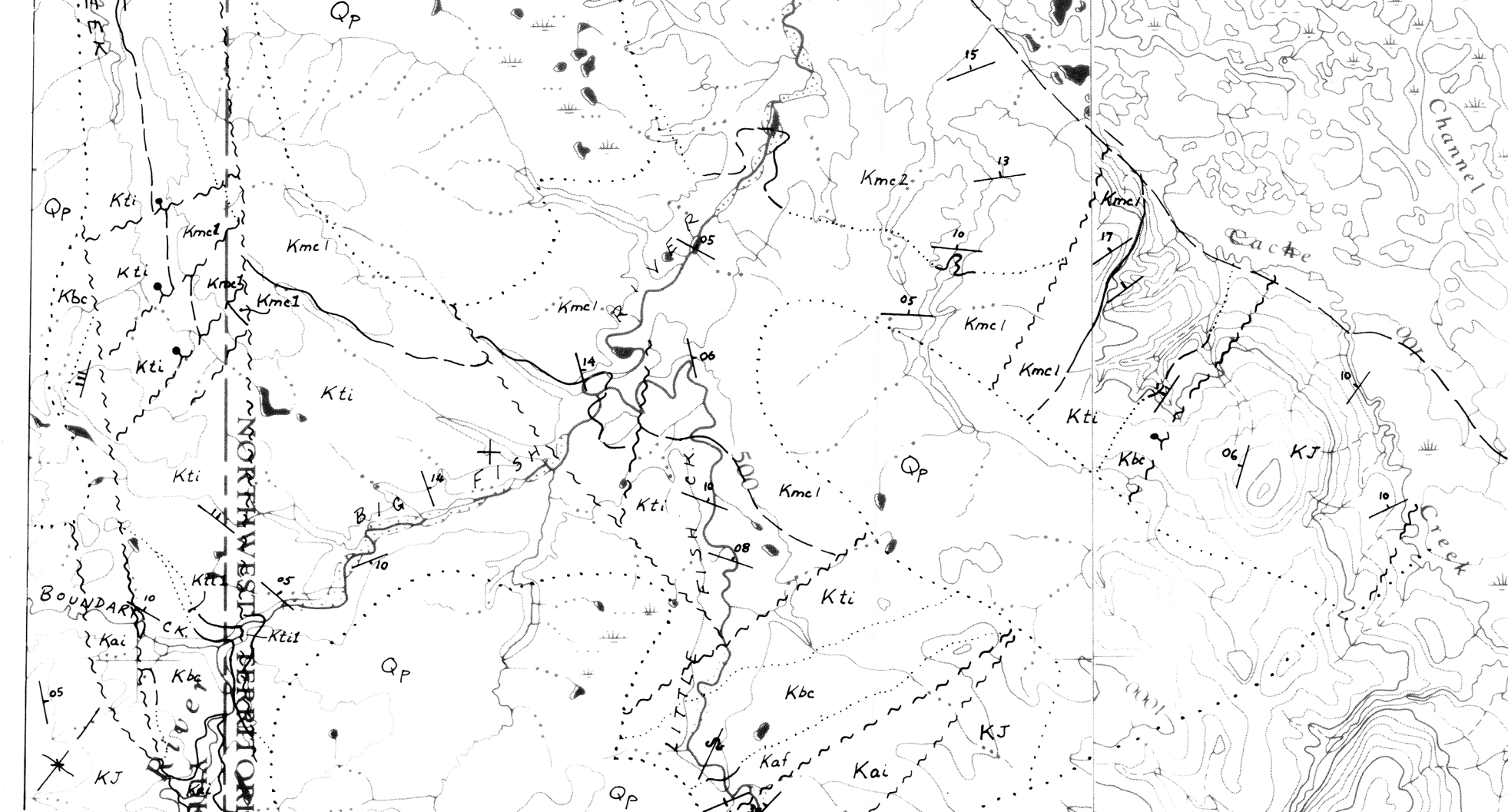


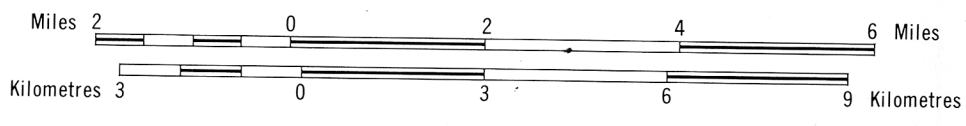
Figure 1. Geological Map of Northeastern Yukon Coastal Plain

LEGEND

- QUATERNARY**
- RECENT**
- Qr** Delta-plain sediments, undivided.
- PLEISTOCENE and RECENT**
- Qp** Unconsolidated pediment and alluvium, undivided.
- CRETACEOUS**
- UPPER CRETACEOUS and ? PALEOCENE**
- KTr** REINDEER FORMATION
KTr1. AKLAK MEMBER: sandstone, conglomerate, coal, shale.
- UPPER CRETACEOUS**
- Kmc1 Kmc2** MOOSE CHANNEL FORMATION
Kmc2. MINISTICOOS MEMBER: mudstone
Kmc1. Basal sandstone member
- Kti Kti1** Kti. TENT ISLAND FORMATION: mudstone; minor siltstone.
Kti1. CUESTA CREEK MEMBER: conglomerate, sandstone, and mudstone at base of formation.
- BOUNDARY CREEK FORMATION: shale; minor bentonite and limestone.**
- LOWER CRETACEOUS**
- Kaf** Albian flysch division: sandstone, shale interbedded.
- Kai** Albian bedded ironstone and shale unit.
- JURASSIC AND CRETACEOUS**
- KJ** Undifferentiated rocks older than above: sandstone and shale.
- geological contact; known, approximate, assumed.
- limit of mapping.
- ~~~~~ fault; defined, approximate, assumed.
- approximate dips; gentle, moderate, steep
- complex folds, axial trend.



Scale 1:125,000



**UNEDITED
MANUSCRIPT**

OPEN FILE
193
APR 1974
GEOLOGICAL SURVEY
OTTAWA