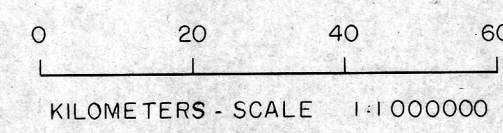
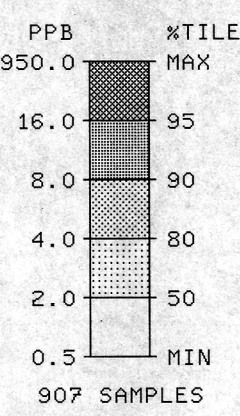
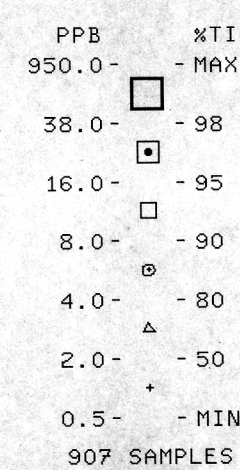


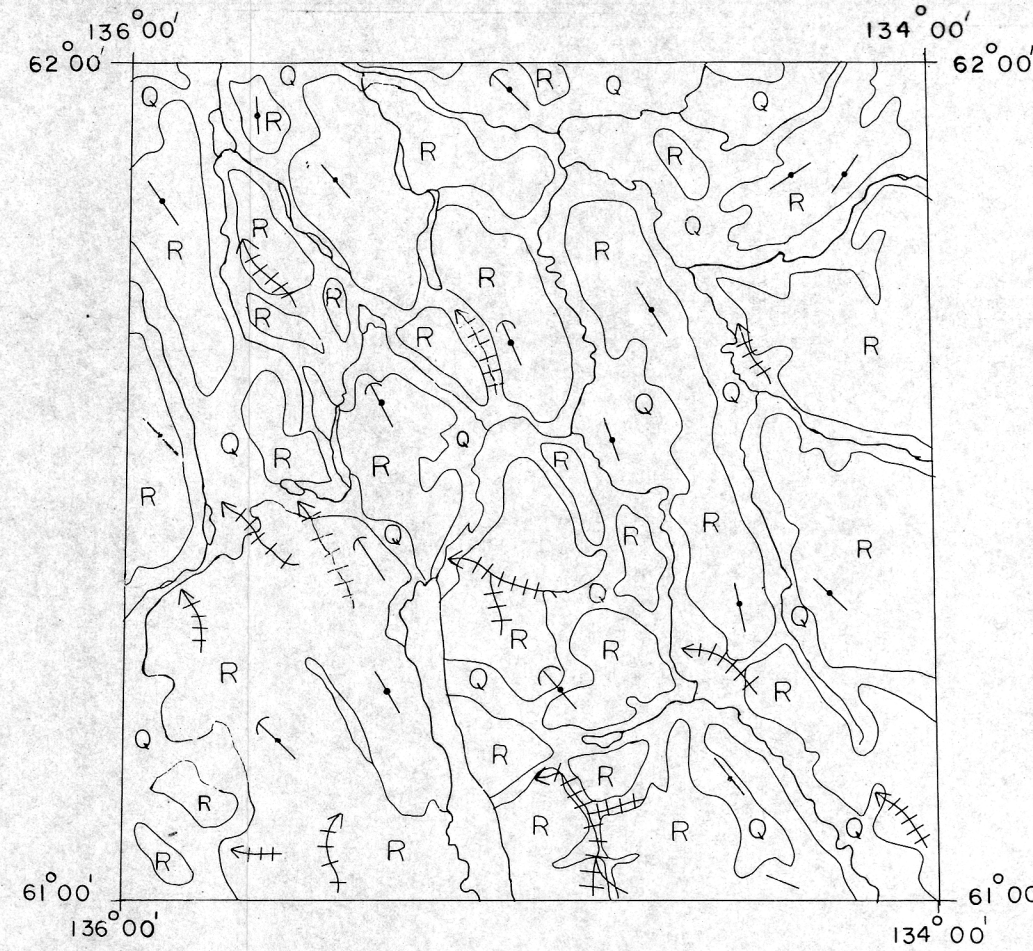
REGIONAL TREND MAP



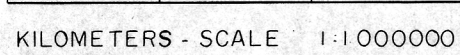
GOLD IN STREAM SEDIMENTS



GSC OPEN FILE 1960  
CANADA - YUKON  
MINERAL DEVELOPMENT  
AGREEMENT (1985-1989)



SURFICIAL GEOLOGY



- Q Undivided surficial deposits, includes unconsolidated gravels, sands, silt, alluvium, colluvium, till, glaciofluvial deposits, kames, eskers and outwash deposits
- R Bedrock; includes discontinuous veneer of undivided glacial drift

SYMBOLS

- Surficial deposit boundary
- Major meltwater channels, indicating direction of flow
- Drumlinoid form; direction of glacial movement inferred, not inferred

Sources of information:

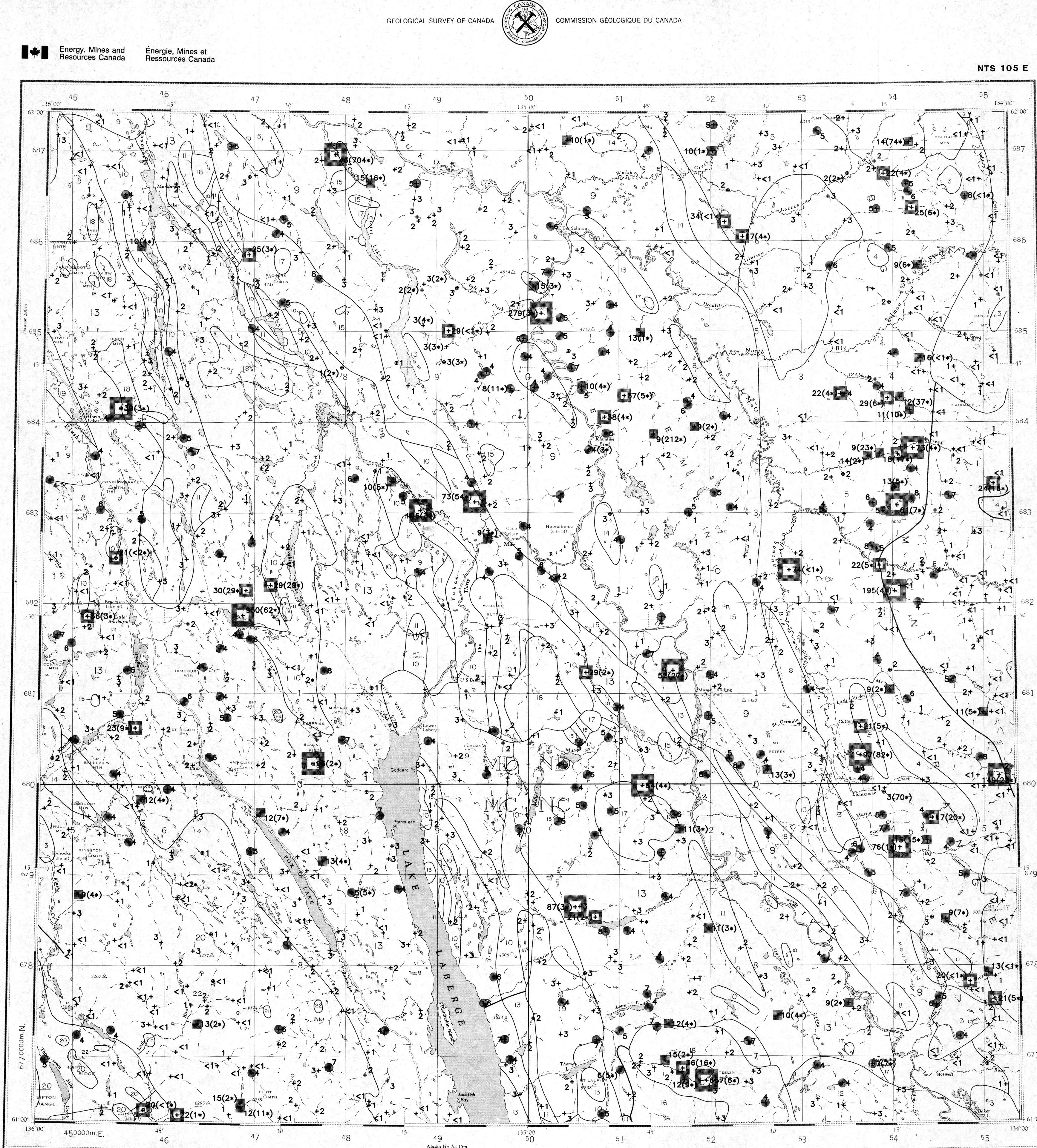
- Campbell, R.B., and Wheeler, J.O., (1966) Geology - Glenlyon, Yukon Territory; Geological Survey of Canada Map 1221A, Scale 1: 253,440
- (1966) Surficial Geology - Glenlyon, Yukon Territory; Geological Survey of Canada Map 1222A, Scale 1: 253,440
- Hughes, O.L., Campbell, R.B., Muller, J.E., and Wheeler, J.O. (1969) Glacial Map of Yukon Territory - South of 65 degrees north latitude; Geological Survey of Canada Map 6-1968; Scale 1: 1,000,000
- Roddick, J.A. and Green, L.H., (1961) Geology - Tay River, Yukon Territory; Geological Survey of Canada Map 13-1961; Scale 1: 253,440

GEOLOGICAL SURVEY OF CANADA  
MINERAL RESOURCES DIVISION  
EXPLORATION GEOCHEMISTRY SUBDIVISION

CONTRACTORS

- Collection: Northway Map Technology, Ltd., Don Mills, Ontario
- Preparation: Golder Associates, Ottawa
- Sediment Analysis: Bondar-Clegg and Company Ltd., Ottawa Chemex Labs Limited, Vancouver (Au only)
- Water Analysis: Chemex Labs Limited, Vancouver
- Cartography: GSC - Geological Information Division Terra Surveys Ltd., Ottawa
- Reproduction: Ashley Reproductions Ltd., Ottawa
- Copies of the OpenFile are available from: Geological Survey of Canada Publications Distribution 601 Booth Street Ottawa, Ontario K1A 0E8 Tel.: (613) 995-4342

CONCENTRATION	FREQUENCY
39 to 950	N= 18( 2.0%)
17 to 38	N= 27( 3.0%)
9 to 16	N= 39( 4.3%)
4 to 8	N= 180(19.8%)
0 to 3	N= 643(70.9%)



- GEOLOGY LEGEND**
- TERTIARY**
- 23\* Tqm 57\*\* quartz monzonite, granodiorite
- LATE TERTIARY**
- 22 LTqm 62 quartz monzonite
  - 21 LTg 62 rhyolite porphyry, granite, granodiorite
  - LTgp 62 granite porphyry
- BOCEME**
- 20 ENM 59 MOUNT NANSEN GROUP: acid to intermediate tuff, breccia
- LOWER TERTIARY**
- 19 Tvd 58 andesite, porphyritic basalt flows and dykes
- CRETACEOUS**
- 18 Kv 52 basalt, andesite, quartz dacite
  - 17 Kqm 52 quartz monzonite, granodiorite; CASSIAR quartz monzonite, alaskite
  - 16 Kgd 52 granodiorite
  - 15 KgdP 52 granodioritic and monzonitic porphyry
- JURASSIC AND CRETACEOUS**
- 14 JKT 51 TANTALUS: conglomerate, siltstone, arkose, coal
- JURASSIC**
- 13 JL 47 LABERGE GROUP: greywacke, arkose, conglomerate
- TRIASSIC AND JURASSIC**
- 12 TJS 46 argillite, sandstone, and siltstone
- TRIASSIC**
- UPPER TRIASSIC**
- 11 WTLm 45 LEWES RIVER GROUP: greywacke, argillite, conglomerate
  - 10 WTLc 45 LEWES RIVER GROUP: limestone
  - 9 Tvc 45 basaltic greenstone
- PERMIAN AND TRIASSIC**
- 8 PFC 40 limestone
- PENNSYLVANIAN AND PERMIAN**
- 7 PPAc 35 limestone
- CARBONIFEROUS AND PERMIAN**
- 6 Cfv 35 andesite, basalt, chert, tuff
  - 5 CFSn 35 schist, gneiss, includes BIG SALMON METAMORPHIC COMPLEX
  - 4 CPub 35 serpentinite, diorite, pyroxenite, peridotite
- PALEOZOIC**
- 3 Pv 09 greenstone, amphibolite
  - 2 PgdN 09 PELLY GNEISS: foliated to gneissic granodiorite
- HADRYNIAN AND CAMBRIAN**
- 1 Hcn 08 schist, gneiss, quartzite

- \* Map unit number for rock type
  - \*\*A anemonic code assigned to rock type and age recorded as part of field observations.
- SYMBOLS**
- Geological boundary
  - Fault
  - No analytical results
  - Field duplicate site

Geology base and legend are derived from:  
Gabielse, H., Tempelman-Kluit, D.J., Blusson, S.L. and Campbell, R.B., (1980) Map 1398A, MacMillan River, Yukon - District of Mackenzie - Alaska, NTS Map area 105, Geological Survey of Canada, Energy, Mines and Resources Canada, Scale 1:1,000,000

Elevation in feet above mean sea level

Magnetic declination at the center of the map area (61°30'N; 135°E) in 1989 is 29°35'E decreasing 11.9' annually. Magnetic declination ranges from 29°01'E, decreasing 11.5' annually, in the southwest corner of the map area, to 30°11'E, decreasing 12.3' annually, in the northeast corner of the map area.

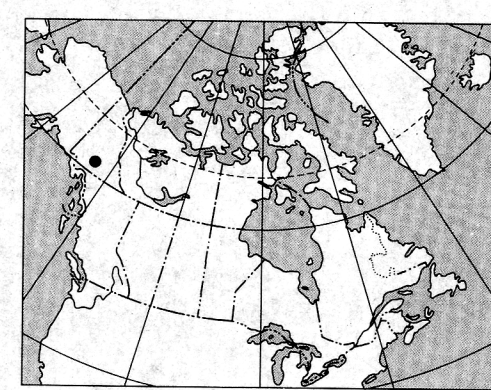
GOLD (ppb)  
STREAM SEDIMENTS  
GSC OPEN FILE 1960  
SOUTH-CENTRAL YUKON, 1988

GOLD (ppb)  
STREAM SEDIMENTS  
GSC OPEN FILE 1960  
REGIONAL GEOCHEMICAL RECONNAISSANCE MAP 123-88  
CANADA - YUKON  
MINERAL DEVELOPMENT AGREEMENT (1985-1989)  
STREAM SEDIMENT AND WATER GEOCHEMICAL SURVEY  
SOUTH-CENTRAL YUKON, 1988

Scale 1:250 000 - Echelle 1/250 000

Kilometers 5 10 15 20 Kilomètres

Universal Transverse Mercator Projection Projection transverse universelle de Mercator  
© Crown copyrights reserved © Droits de la Couronne réservés



LIEU DE LA CARTE - INDEX MAP

Contribution to the Canada/Yukon Subsidiary Agreement on Mineral Resources 1985-1989 under the Canada/Yukon Economic Development Agreement

Contribution à l'Entente auxiliaire Canada/Yukon sur l'exploitation minière 1985-89 dans le cadre de l'Entente Canada/Yukon sur le développement économique.



This document was produced by scanning the original publication. Ce document est le produit d'une numérisation par balayage de la publication originale.