

SURFICIAL GEOLOGY

- Q** Undivided surficial deposits, includes unconsolidated gravels, sands, silt, alluvium, colluvium, till, glaciofluvial deposits, kames, eskers and outwash deposits
- R** Bedrock; includes discontinuous veneer of undivided glacial drift

SYMBOLS

- Surficial deposit boundary
- Major meltwater channels, indicating direction of flow
- Drumlinoid form; direction of glacial movement inferred, not inferred

Sources of information:

- Campbell, R.B., and Wheeler, J.O., (1966) Geology - Glenlyon, Yukon Territory; Geological Survey of Canada Map 1221A, Scale 1: 253,440
- (1966) Surficial Geology - Glenlyon, Yukon Territory; Geological Survey of Canada Map 1222A, Scale 1: 253,440
- Hughes, O.L., Campbell, R.B., Muller, J.E., and Wheeler, J.O. (1969) Glacial Map of Yukon Territory - South of 65 degrees north latitude; Geological Survey of Canada Map 6-1968; Scale 1: 1,000,000
- Roddick, J.A. and Green, L.H., (1961) Geology - Tay River, Yukon Territory; Geological Survey of Canada Map 13-1961; Scale 1: 253,440

**GEOLOGICAL SURVEY OF CANADA
MINERAL RESOURCES DIVISION
EXPLORATION GEOCHEMISTRY SUBDIVISION**

CONTRACTORS

- Collection:** Northway Map Technology, Ltd., Don Mills, Ontario
- Preparation:** Golder Associates, Ottawa
- Sediment Analysis:** Bondar-Clegg and Company Ltd., Ottawa
Chemex Labs Limited, Vancouver (Au only)
- Water Analysis:** Chemex Labs Limited, Vancouver
- Cartography:** GSC - Geological Information Division
Terra Surveys Ltd., Ottawa
- Reproduction:** Ashley Reproductions Ltd., Ottawa

Copies of the OpenFile are available from:
Geological Survey of Canada
Publications Distribution
601 Booth Street
Ottawa, Ontario K1A 0E8
Tel.: (613) 995-4342

Contribution to the Canada/Yukon Subsidiary Agreement on Mineral Resources 1985-1989 under the Canada/Yukon Economic Development Agreement

Contribution à l'Entente auxiliaire Canada/Yukon sur l'exploitation minière 1985-89 dans le cadre de l'Entente Canada/Yukon sur le développement économique.

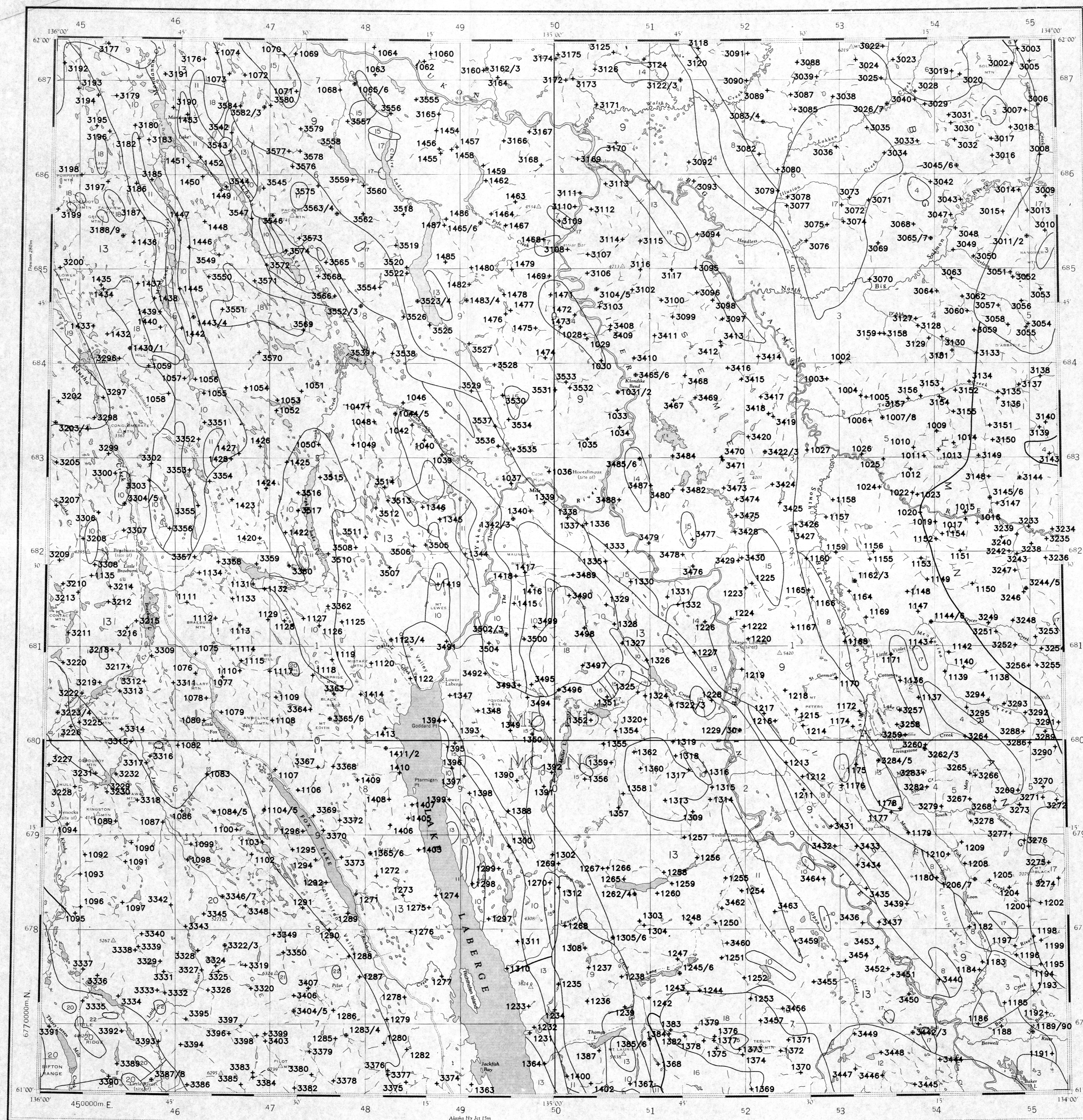


This document was produced by scanning the original publication. Ce document est le produit d'une numérisation par balayage de la publication originale.



**SAMPLE LOCATION
STREAM SEDIMENTS
GSC OPEN FILE 1960
SOUTH-CENTRAL YUKON, 1988**

NTS 105 E



GEOLOGY LEGEND

- TERTIARY**
 - 23* Tqm 57** quartz monzonite, granodiorite
- LATE TERTIARY**
 - 22 Ltqm 62 quartz monzonite
 - 21 Ltq 62 rhyolite porphyry, granite, granodiorite
 - Ltgp 62 granite porphyry
- Eocene**
 - 20 Emn 59 MOUNT NANSEN GROUP: acid to intermediate tuff, breccia
- LOWER TERTIARY**
 - 19 Tvd 58 andesite, porphyritic basalt flows and dykes
- CRETACEOUS**
 - 18 Kv 52 basalt, andesite, quartz dacite
 - 17 Kqm 52 quartz monzonite, granodiorite; CASSIAR quartz monzonite, alaskite
 - 16 Kgd 52 granodiorite
 - 15 KgdP 52 granodioritic and monzonitic porphyry
- JURASSIC AND CRETACEOUS**
 - 14 Jkt 51 TANTALUS: conglomerate, siltstone, arkose, coal
- JURASSIC**
 - 13 JkL 47 LABERGE GROUP: greywacke, arkose, conglomerate
- TRIASSIC AND JURASSIC**
 - 12 TJa 46 argillite, sandstone, and siltstone
- TRIASSIC**
 - UPPER TRIASSIC**
 - 11 Utlw 45 LEWES RIVER GROUP: greywacke, argillite, conglomerate
 - 10 Utc 45 LEWES RIVER GROUP: limestone
 - 9 Tv 45 basaltic greenstone
 - PERMIAN AND TRIASSIC**
 - 8 Ptc 40 limestone
 - PENNSYLVANIAN AND PERMIAN**
 - 7 Pfac 35 limestone
 - CARBONIFEROUS AND PERMIAN**
 - 6 Cpv 35 andesite, basalt, chert, tuff
 - 5 Cpsn 35 schist, gneiss, includes BIG SALMON METAMORPHIC COMPLEX
 - 4 Cpub 35 serpentinite, diorite, pyroxenite, peridotite
 - PALAEZOIC**
 - 3 Pv 09 greenstone, amphibolite
 - 2 Pgdn 09 PELLY GNEISS: foliated to gneissic granodiorite
 - HADRYNIAN AND CAMBRIAN**
 - 1 Hcan 08 schist, gneiss, quartzite

* Map unit number for rock type
**A mnemonic code assigned to rock type and age recorded as part of field observations.

SYMBOLS

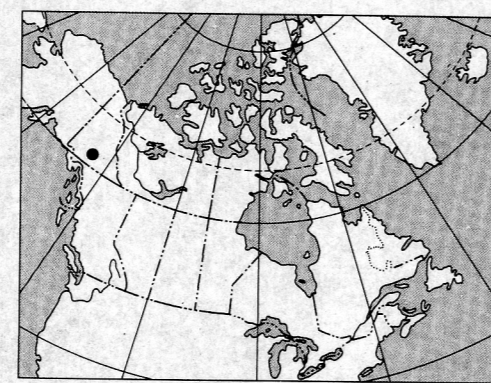
- Geological boundary
- Fault
- No analytical results
- Field duplicate site

Geology base and legend are derived from:

Gabrielse, H., Tempelman-Kluit, D.J., Blusson, S.L. and Campbell, R.B., (1980) Map 1398A, Macmillan River, Yukon - District of Mackenzie - Alaska, NTS Map area 105, Geological Survey of Canada, Energy, Mines and Resources Canada, Scale 1:1,000,000

Elevation in feet above mean sea level

Magnetic declination at the center of the map area (61°30'N; 135°E) in 1989 is 29°35'E decreasing 11.9' annually. Magnetic declination ranges from 29°01'E decreasing 11.5' annually, in the southwest corner of the map area, to 30°11'E, decreasing 12.3' annually, in the northeast corner of the map area.

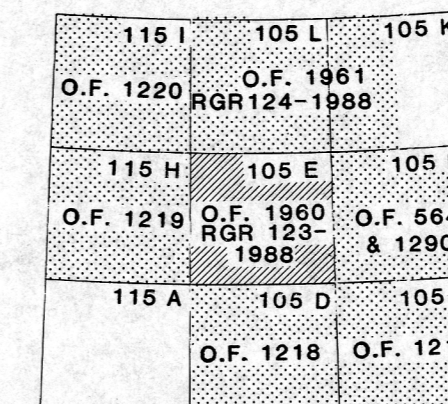


LIEU DE LA CARTE - INDEX MAP

**SAMPLE LOCATION
STREAM SEDIMENTS
GSC OPEN FILE 1960
REGIONAL GEOCHEMICAL RECONNAISSANCE MAP 123-88
CANADA - YUKON
MINERAL DEVELOPMENT AGREEMENT (1985 - 1989)
STREAM SEDIMENT AND WATER GEOCHEMICAL SURVEY
SOUTH-CENTRAL YUKON, 1988**

Scale 1:250 000 - Échelle 1/250 000
Kilometres 5 10 15 20 Kilometres

Universal Transverse Mercator Projection
© Crown copyrights reserved



NATIONAL TOPOGRAPHIC SYSTEM REFERENCE AND INDEX TO ADJOINING GEOLOGICAL SURVEY OF CANADA MAPS

**SAMPLE LOCATION
STREAM SEDIMENTS
GSC OPEN FILE 1960
SOUTH-CENTRAL YUKON, 1988**