

FIG. 5 Jurassic and Lower Cretaceous profile D1 to D4 from Central Keele Range, across Southern Eagle Plains to the eastern slope of Richardson Mountains, Northern Yukon and Northwestern Mackenzie District, N.W.T. Approximate direction and geographical position of the profile is indicated in Figure 1.

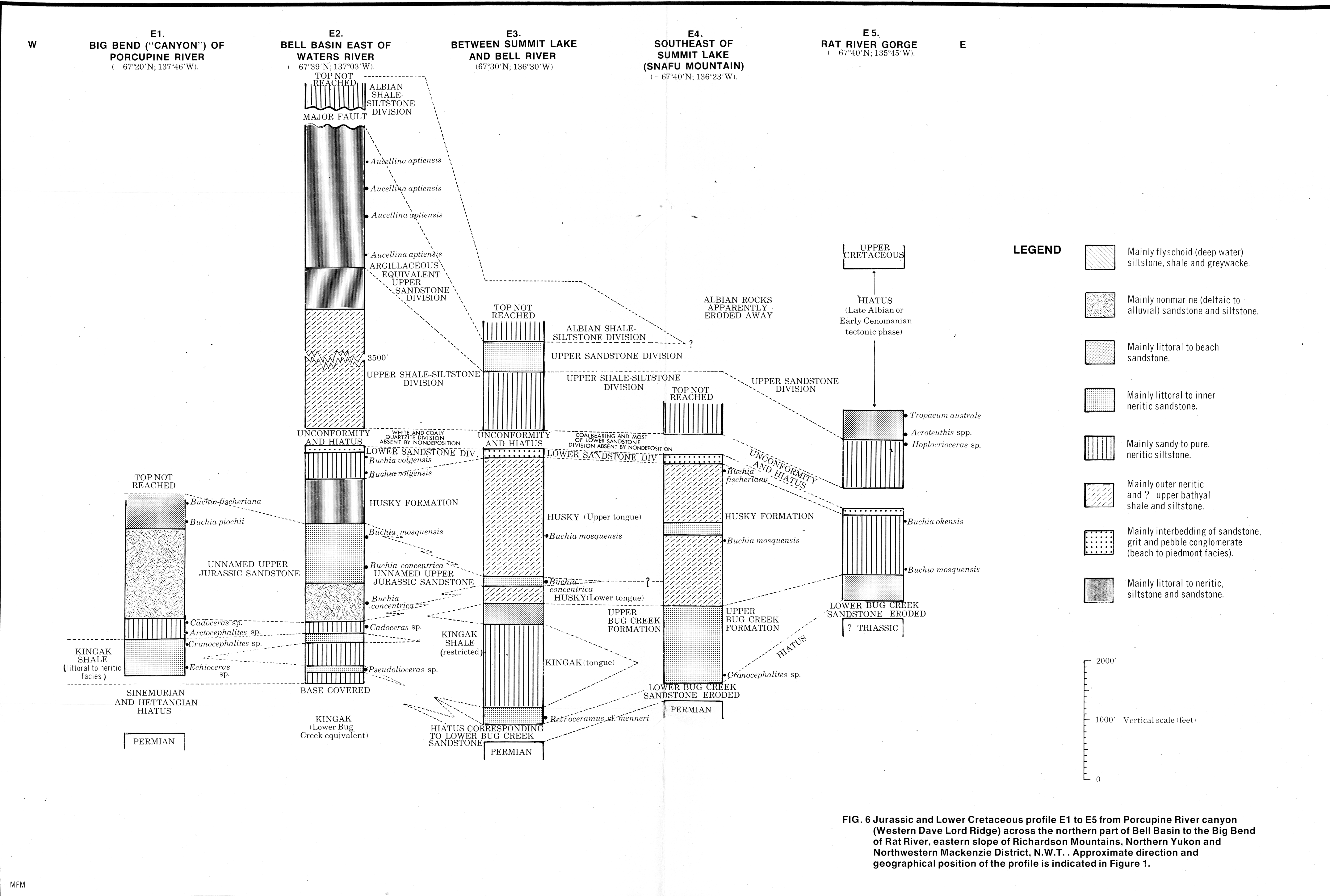


FIG. 6 Jurassic and Lower Cretaceous profile E1 to E5 from Porcupine River canyon (Western Dave Lord Ridge) across the northern part of Bell Basin to the Big Bend of Rat River, eastern slope of Richardson Mountains, Northern Yukon and Northwestern Mackenzie District, N.W.T. Approximate direction and geographical position of the profile is indicated in Figure 1.

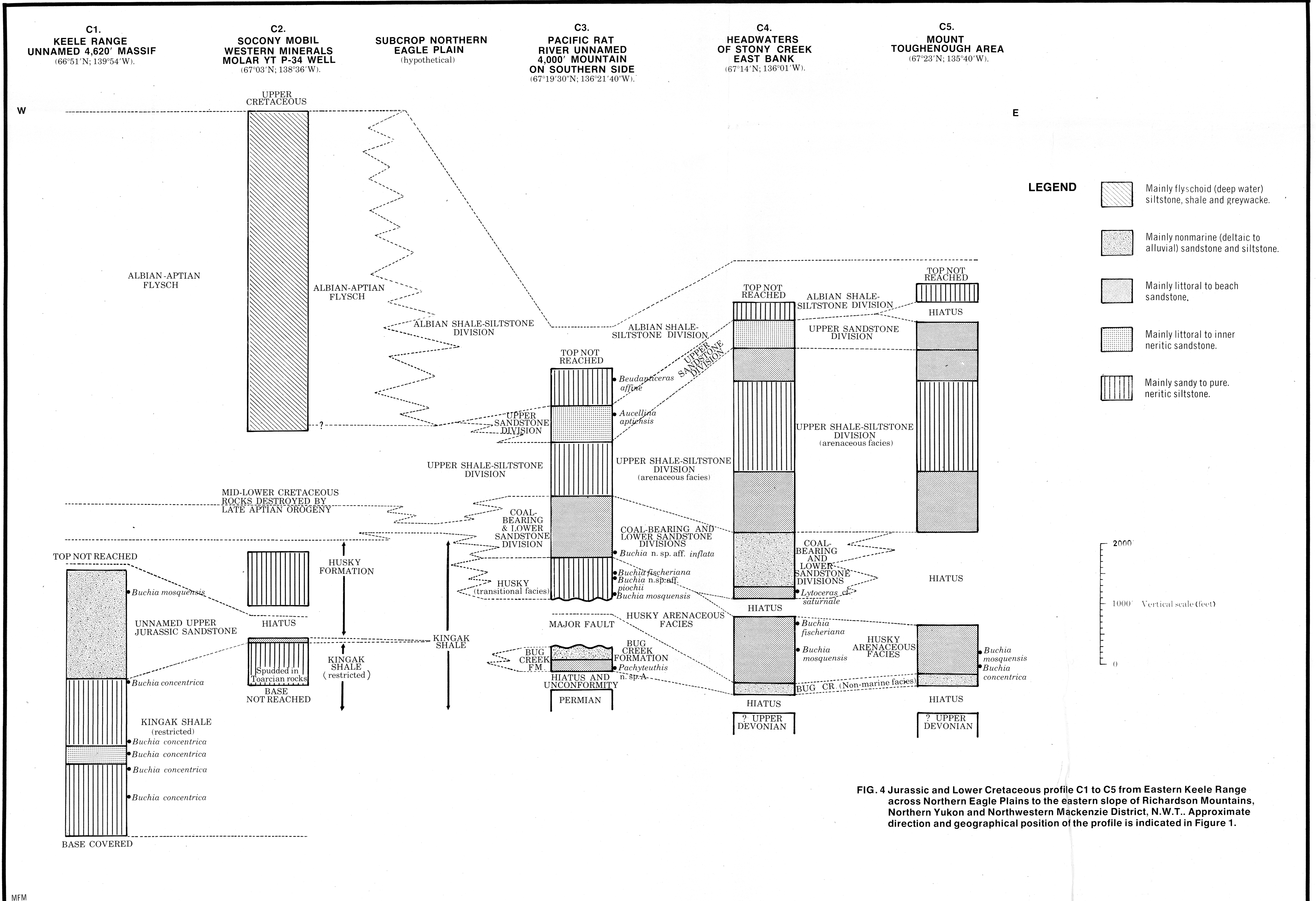


FIG. 4 Jurassic and Lower Cretaceous profile C1 to C5 from Eastern Keele Range across Northern Eagle Plains to the eastern slope of Richardson Mountains, Northern Yukon and Northwestern Mackenzie District, N.W.T. Approximate direction and geographical position of the profile is indicated in Figure 1.

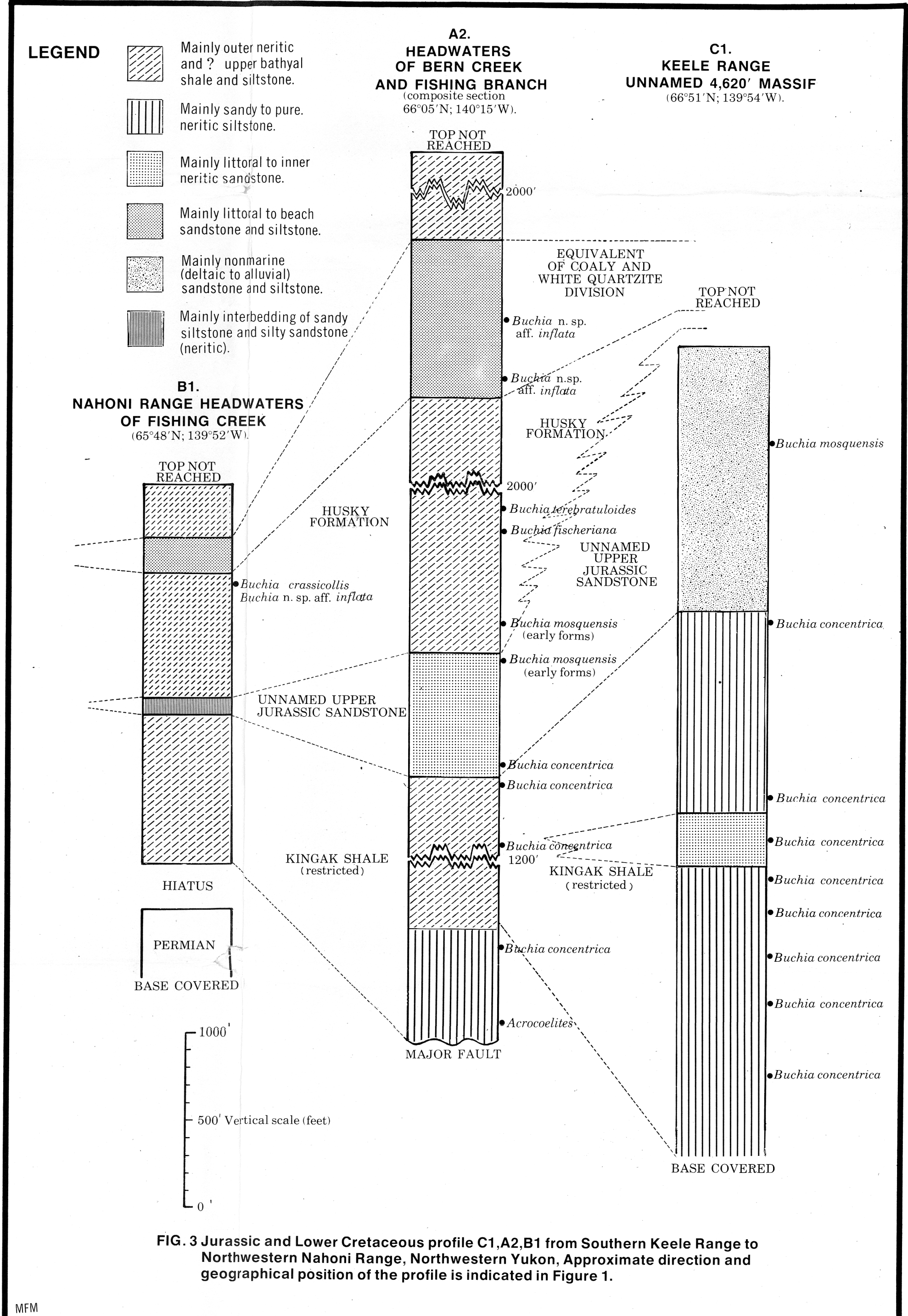


FIG. 3 Jurassic and Lower Cretaceous profile C1, A2, B1 from Southern Keele Range to Northwestern Nahoni Range, Northwestern Yukon. Approximate direction and geographical position of the profile is indicated in Figure 1.

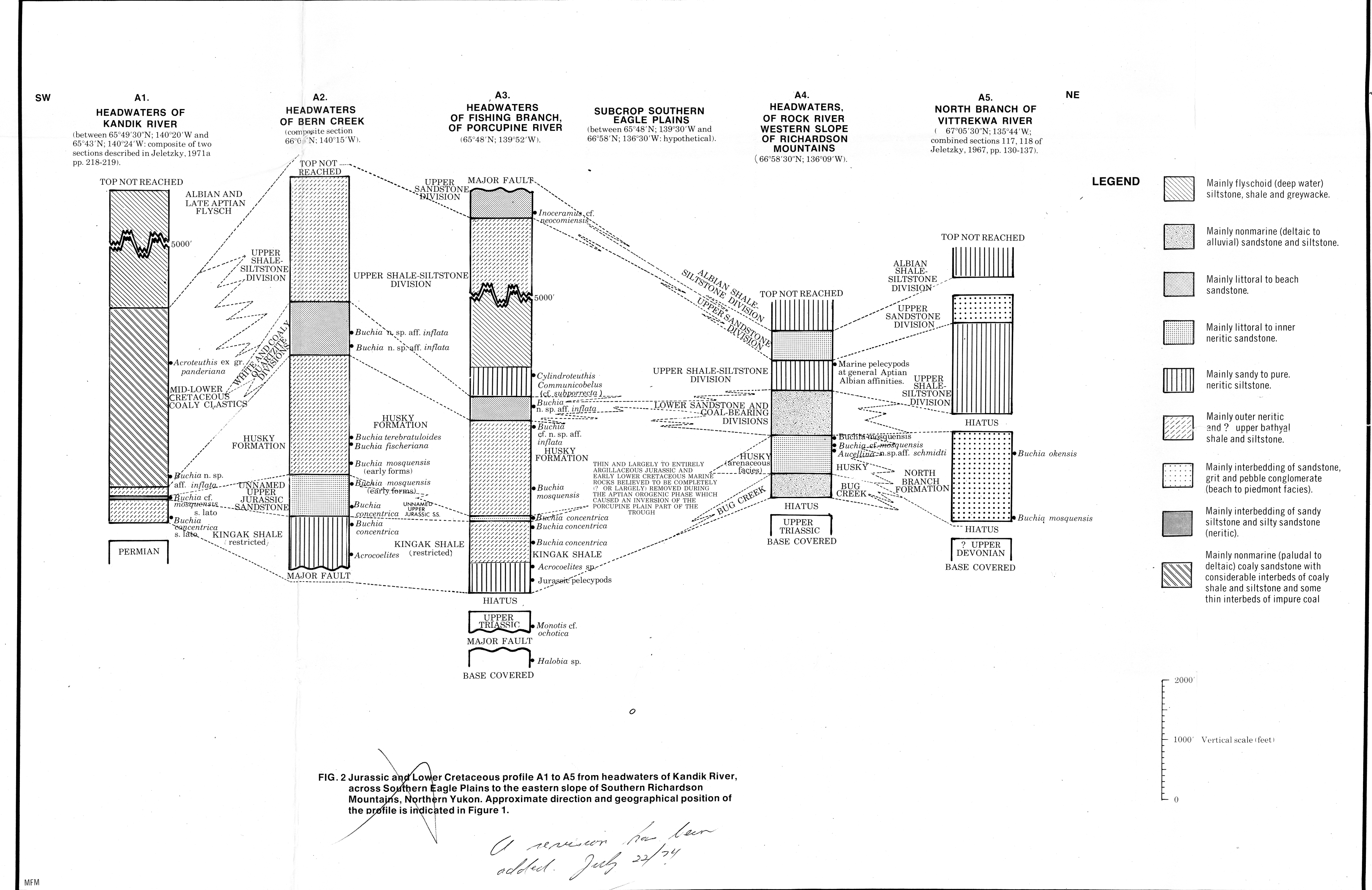


FIG. 2 Jurassic and Lower Cretaceous profile A1 to A5 from headwaters of Kandik River, across Southern Eagle Plains to the eastern slope of Richardson Mountains, Northern Yukon. Approximate direction and geographical position of the profile is indicated in Figure 1.

OPEN FILE
203
MAY 1974
GEOLOGICAL SURVEY
OTTAWA

This document was produced by scanning the original publication. Ce document est le produit d'une numérisation par balayage de la publication originale.