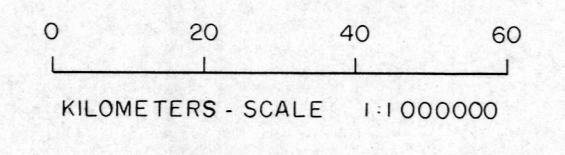
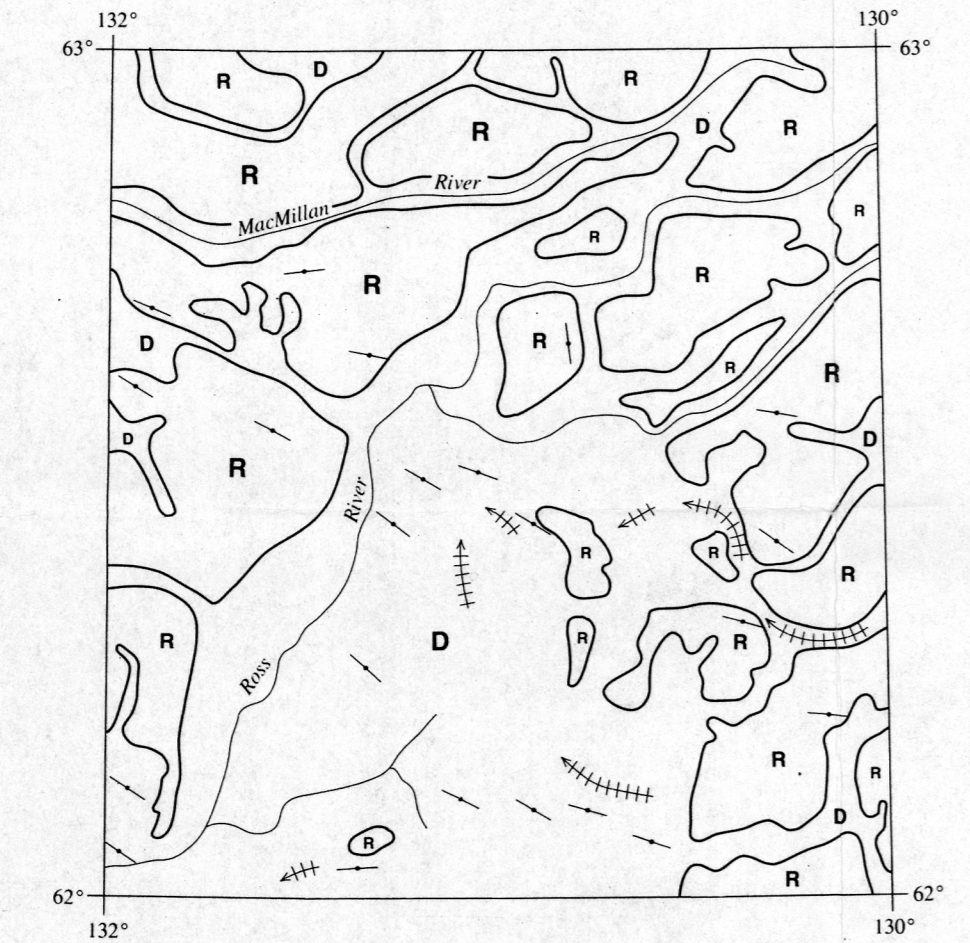
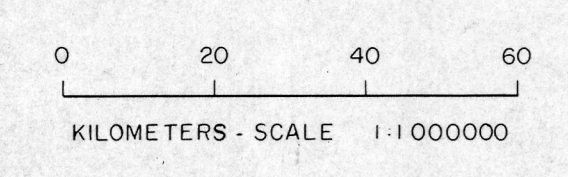


REGIONAL TREND MAP



SURFICIAL GEOLOGY

- D** Unconsolidated glacial and alluvial deposits
- R** Bedrock, mostly uncovered

SYMBOLS

- Drumlinoid form (direction of movement inferred, not inferred)
- Meltwater channel showing direction of movement

Sources of information:

- Hughes, O.L. 1969. Glacial Map of Yukon Territory. G.S.C. Map 6-1968, scale 1:1,000,000.
- Roddick, J.A. and Green, L.H. 1961. Geology, Sheldon Lake, Yukon Territory. G.S.C. Map 12-1961, scale 1 inch to 4 miles.

**GEOLOGICAL SURVEY OF CANADA
MINERAL RESOURCES DIVISION
EXPLORATION GEOCHEMISTRY SUBDIVISION**

CONTRACTORS

- Collection:** Northway Map Technology Ltd. Don Mills, Ontario
- Preparation:** Golder Associates, Ottawa, Ontario
- Sediment Analysis:** Bondar-Clegg & Co. Ltd. Ottawa, Ontario
- Water Analysis:** Chemex Labs Ltd. North Vancouver, British Columbia
- Cartography:** Les Services Cartographique 2 + 1 Inc. Gatineau, Quebec
- Reproduction:** Ashley Reproductions Ltd. Ottawa, Ontario
- Copies of the Open File are available from:** Geological Survey of Canada Publications Distribution 601 Booth Street Ottawa, Ontario, K1A 0E8 Tel: (613) 995-4342

SAMPLE LOCATIONS ON BASE MAPS

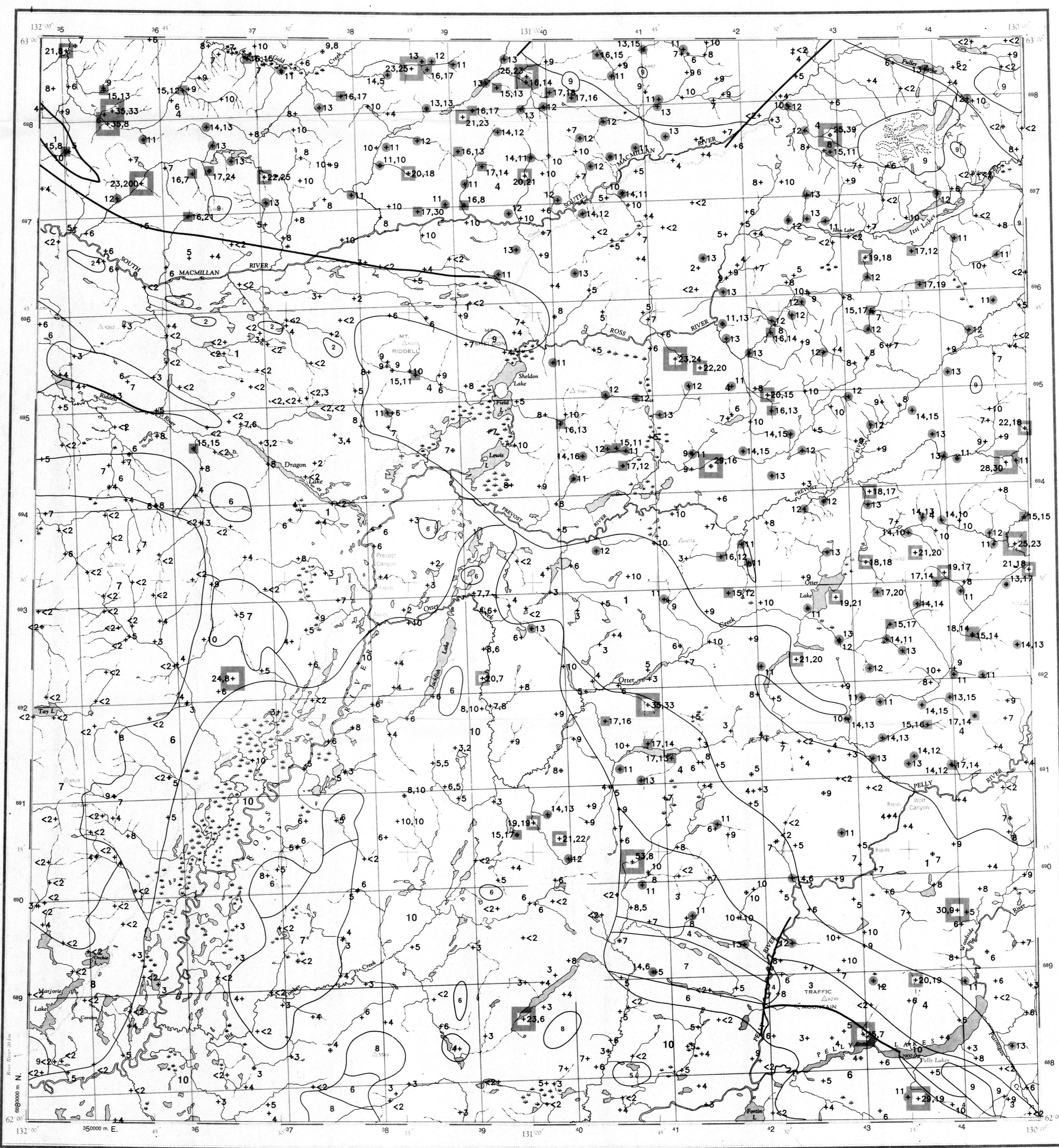
Original sample locations were recorded in field areas on 1:50 000 scale paper maps used by sample collection contractors. Locations were later digitized from these maps by GSC staff to obtain UTM coordinates (Eastings and Northings) and adjusted to fit 1:250 000 scale base maps used for publication. As a result, sample points may not fall exactly on the streams marked on the map, and in some cases may indicate a site on a stream marked on 1:50 000 scale maps but not on 1:250 000 scale maps.

Contribution to the Canada/Yukon Economic Development Program 1989-1990.

Contribution au Programme Canada-Yukon sur le développement économique 1989-1990.

Elevation in feet above mean sea level

Magnetic declination in 1990 for the central part of the map area (62°30'N; 131°E) is 30°54'E decreasing 12.3W annually. Magnetic declination ranges from 30°20'E decreasing 12.0W annually in the southwest corner of the map area, to 31°27'E decreasing 12.8W annually, in the northeast corner of the map area.



GEOLOGY LEGEND

CENOZOIC			
QUATERNARY	10*	Q8	64** Glacial and surficial deposits
MESOZOIC			
CRETACEOUS	9	KQM	52 Quartz monzonite, granodiorite; alaskite
	8	KGP	52 Granodioritic and monzonitic porphyry
	7	KSF	52 South Fork; andesite, dacite, basalt
PALEOZOIC			
DEVONIAN AND MISSISSIPPIAN	6	DME	29 Earn Group: shale, chert, arenite, conglomerate
DEVONIAN	5	SDCQ	25 dolomite, quartz, argillite
ORDOVICIAN, SILURIAN AND LOWER DEVONIAN	4	OSDR	20 Road River: black graptolitic shale, chert
CAMBRIAN AND ORDOVICIAN	3	COR	14 Rabbitkettle: limestone, siltstone
PROTEROZOIC			
HADRYNIAN	2	HC	07 crystalline limestone
	1	HQP	07 gritty quartzite, argillite, shale, phyllite

* Map unit number assigned to rock type
** A mnemonic code assigned to rock type and age

Source of Information:

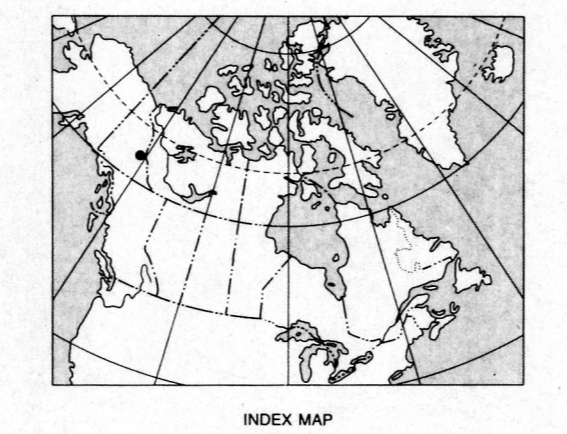
Gabrielse, H., Templeman-Kluit, D.J., Blusson, S.L. and Campbell, R.B. 1980. Macmillan River, Yukon-District of Mackenzie - Alaska, Sheet 105, 115. Geological Survey of Canada Map 1398A, Scale 1:1,000,000.

SYMBOLS

- Geological boundary
- Fault
- No data +
- Single analysis +27
- Repeat analysis +27,14
- Single analysis, less than detection limit +<1
- Field duplicate site *

GOLD

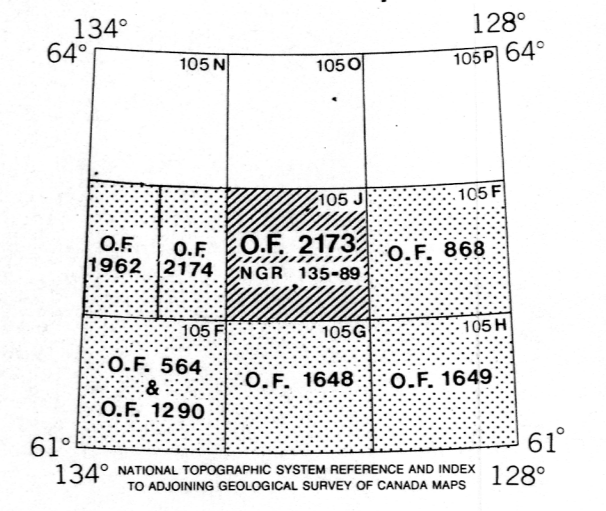
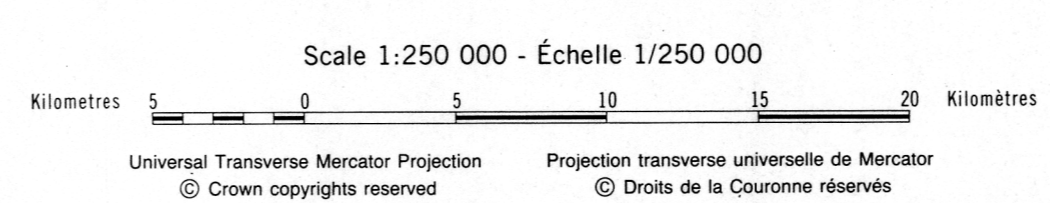
CONCENTRATION (ppb)	FREQUENCY (N=no. of sites)
23 to 53	N= 17 (1.9%)
18 to 22	N= 21 (2.4%)
15 to 17	N= 44 (5.0%)
11 to 14	N= 144 (16.3%)
0 to 10	N= 660 (74.5%)



INDEX MAP

**GOLD (ppb)
STREAM SEDIMENTS**
GSC OPEN FILE 2173
NATIONAL GEOCHEMICAL RECONNAISSANCE MAP 135-89
CANADA - YUKON
ECONOMIC DEVELOPMENT PROGRAM
(1989-1990)

STREAM SEDIMENT AND WATER GEOCHEMICAL SURVEY
EAST CENTRAL YUKON, 1989



This document was produced by scanning the original publication. Ce document est le produit d'une numérisation par balayage de la publication originale.