

DECLINATION OF THE COMPASS NEEDLE 1959

Produced and printed by the SURVEYS AND MAPPING BRANCH, DEPARTMENT OF MINES AND TECHNICAL SURVEYS, 1959, from air photographs taken between 1949 and 1955.

Transverse Mercator Projection

Version of Dec 20/73

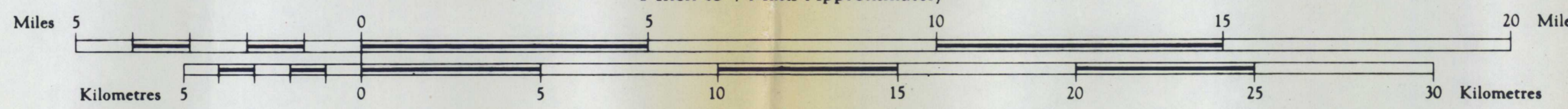
REFERENCE

- Wagon or winter road
- Trail or portage
- Village or settlement
- Post office
- Building or cabin
- Horizontal control point
- Astronomical position
- Spot elevation (in feet)
- R.C.M.P. post

MOUNT EDUNI
NORTHWEST TERRITORIES
DISTRICT OF MACKENZIE

Scale 1:250,000

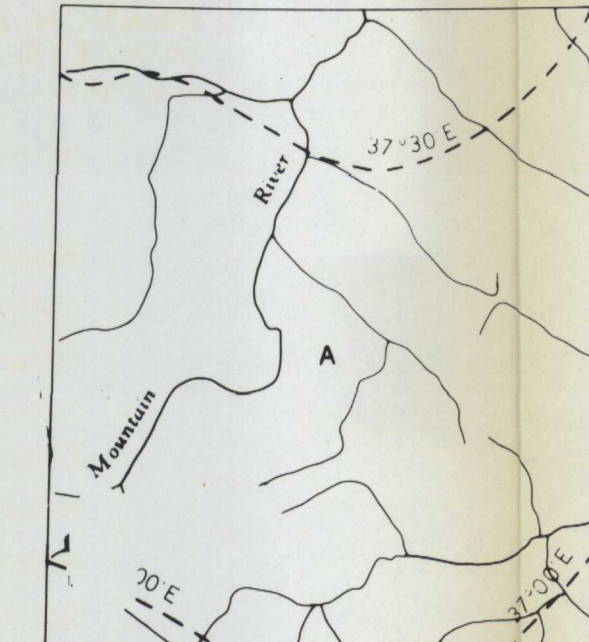
1 Inch to 4 Miles Approximately



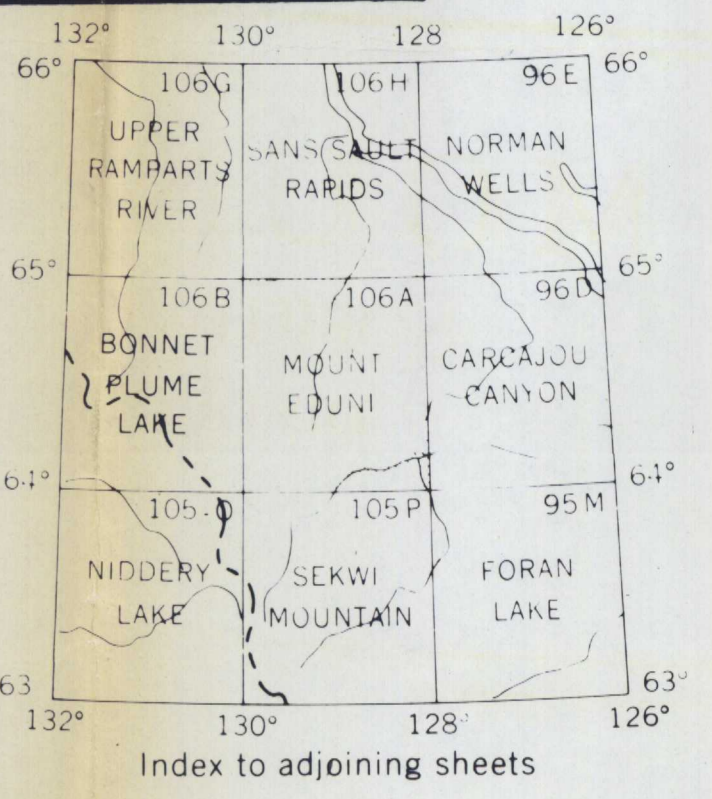
Copies may be obtained from the Map Distribution Office, Department of Mines and Technical Surveys, Ottawa, at 25 cents each.

REFERENCE

- Streams: intermittent or dry
- in dry river bed
- Rapids; falls
- Marsh or swamp
- Contours: elevation
- depression
- approximate
- Sand, gravel or mud
- Forest



on of the compass needle at any place along a broken line is the given on that broken line. At other places the declination is set given on the neighbouring broken lines. Thus at the place marked above is between 37° 00' E and 37° 30' E. The declination of the site is decreasing 5 minutes annually.



O/F 221