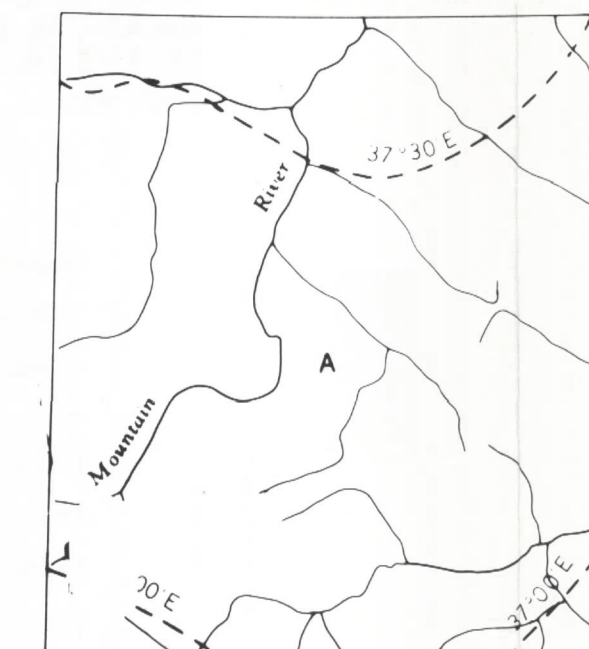


DECLINATION OF THE COMPASS NEEDLE 1959



Produced and printed by the SURVEYS AND MAPPING BRANCH, DEPARTMENT OF MINES AND TECHNICAL SURVEYS, 1959, from air photographs taken between 1949 and 1955.

REFERENCE

- Wagon or winter road
- Trail or portage
- Village or settlement
- Post office
- Building or cabin
- Horizontal control point
- Astronomical position
- Spot elevation (in feet)
- R.C.M.P. post

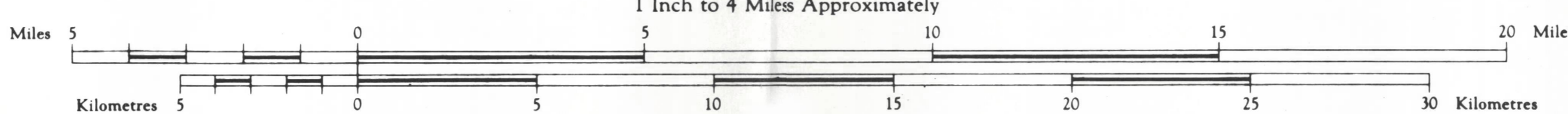
Transverse Mercator Projection

Version of Dec 20/53 90A

MOUNT EDUNI

NORTHWEST TERRITORIES
DISTRICT OF MACKENZIE

Scale 1:250,000
1 Inch to 4 Miles Approximately

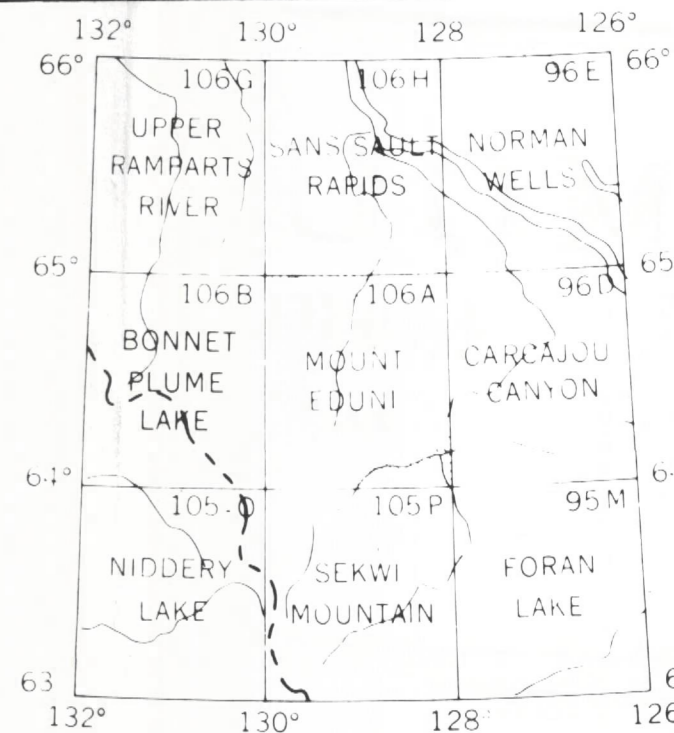


Contour Interval 500 Feet
Elevations in Feet above Mean Sea Level
North American Datum 1927.

Copies may be obtained from the Map Distribution Office, Department of Mines and Technical Surveys, Ottawa, at 25 cents each.

REFERENCE

- Streams: intermittent or dry
- in dry river bed
- Rapids, falls
- Marsh or swamp
- Contours: elevation
- depression
- approximate
- Sand, gravel or mud
- Forest



on of the compass needle at any place along a broken line is the given on that broken line. At other places the declination is set even on the neighbouring broken line; thus at the place marked ation is between 37°00' E and 37°30' E. The declination of the side is decreasing 6 minutes annually.

This document was produced by scanning the original publication.
Ce document est le produit d'une numérisation par balayage de la publication originale.