



LogAN

Imp Pullen E-17

69-46-16N/134-19-41W

1990.0 ft to 4930.0 ft

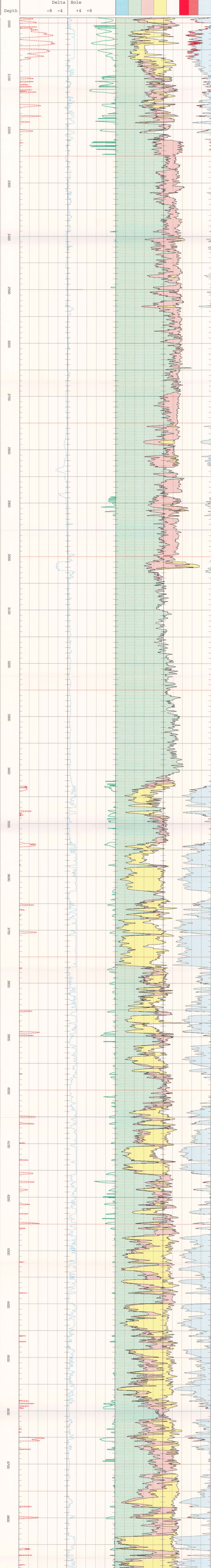
This document was produced by scanning the original publication.

Ce document est le produit d'une numérisation par balayage de la publication originale.

Remarks:

Rw = 0.3 ohmm at 75 degrees F.

- ◆ KB = 41.9 ft
- ◆ Sandstone analysis by Sandan
- ◆ Data stored in E-17.ANS
- ◆ Analyzed by: Kenneth Heslop, P.Eng.



LogAN

Imp Pullen E-17

69-46-16N/134-19-41W