

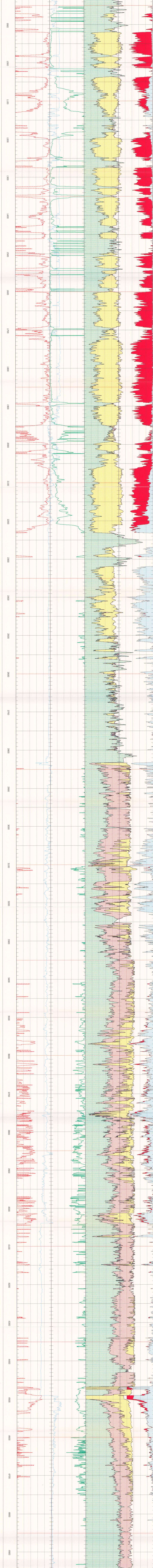
# LogAN

Imp IOE et al Isserk E-27  
69-56-20.039N/134-22-10.773W  
600.0 ft to 4950.0 ft

## Remarks:

- Rw = 0.3 ohmm at 75 degrees F.
- ◆ KB = 37.1 ft
- ◆ Sandstone analysis by Sandan
- ◆ Data stored in E-27.ANS
- ◆ Analyzed by: Kenneth Heslop, P.Eng.

This document was produced  
by scanning the original publication.  
Ce document est le produit d'une  
numérisation par balayage  
de la publication originale.



LogAN

Imp IOE et al Isserk E-27

69-56-20.039N/134-22-10.773W