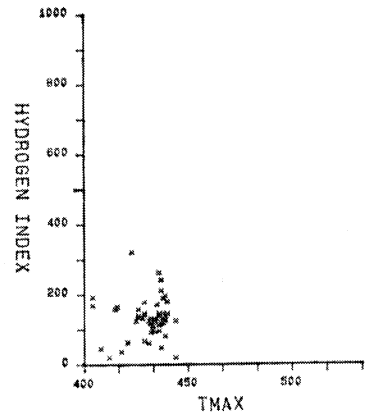
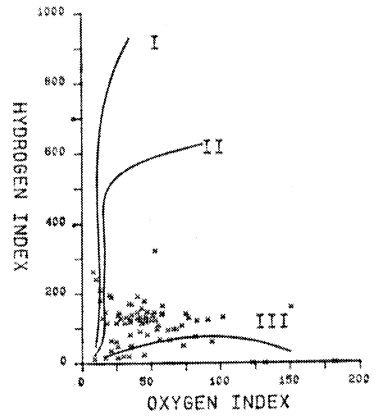
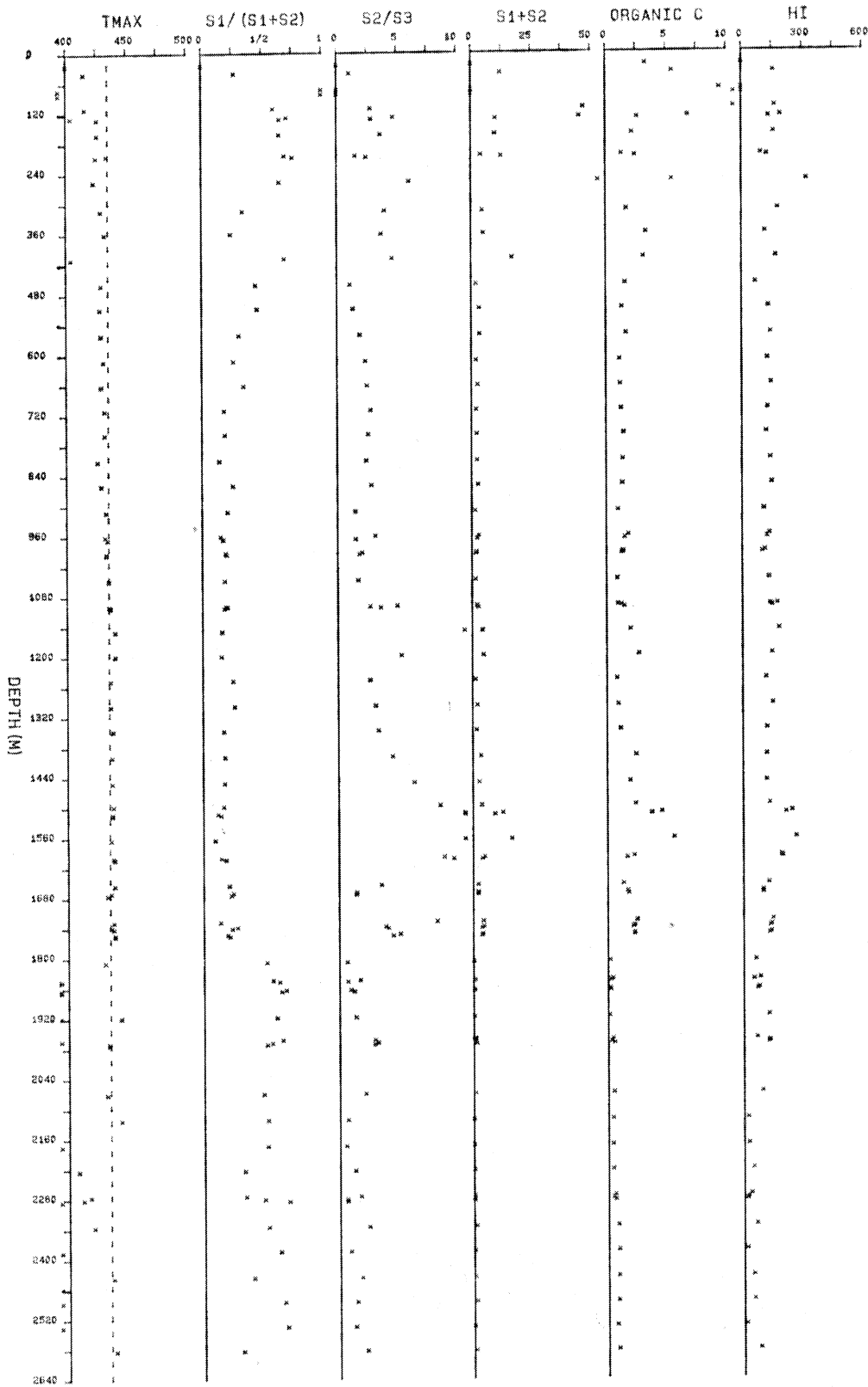




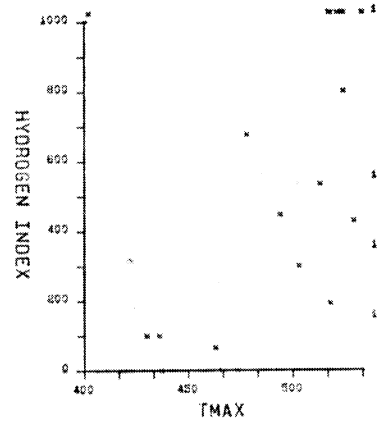
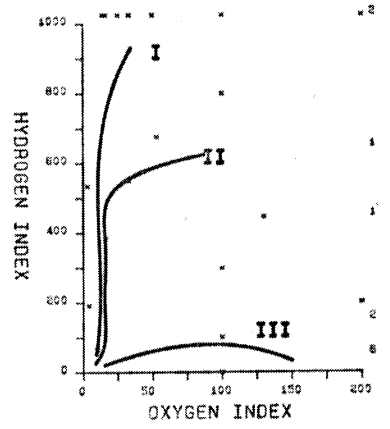
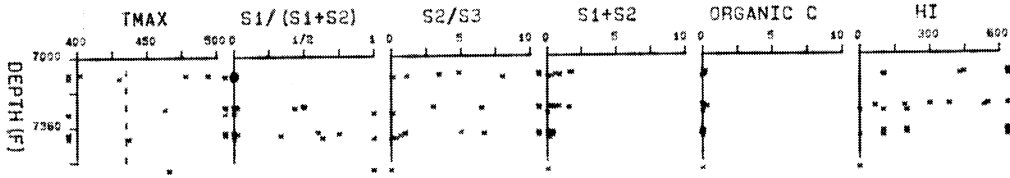
Shell Aklavik A-37



This document was produced by scanning the original publication.
Ce document a été produit par numérisation de la publication originale.

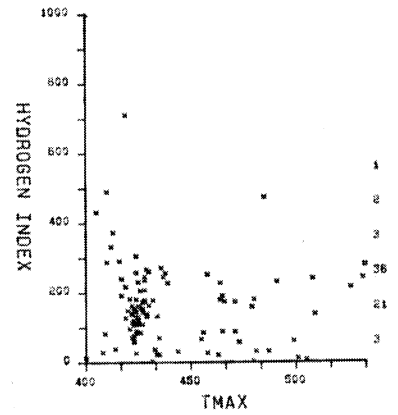
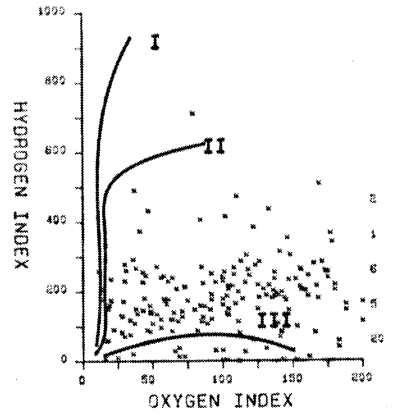
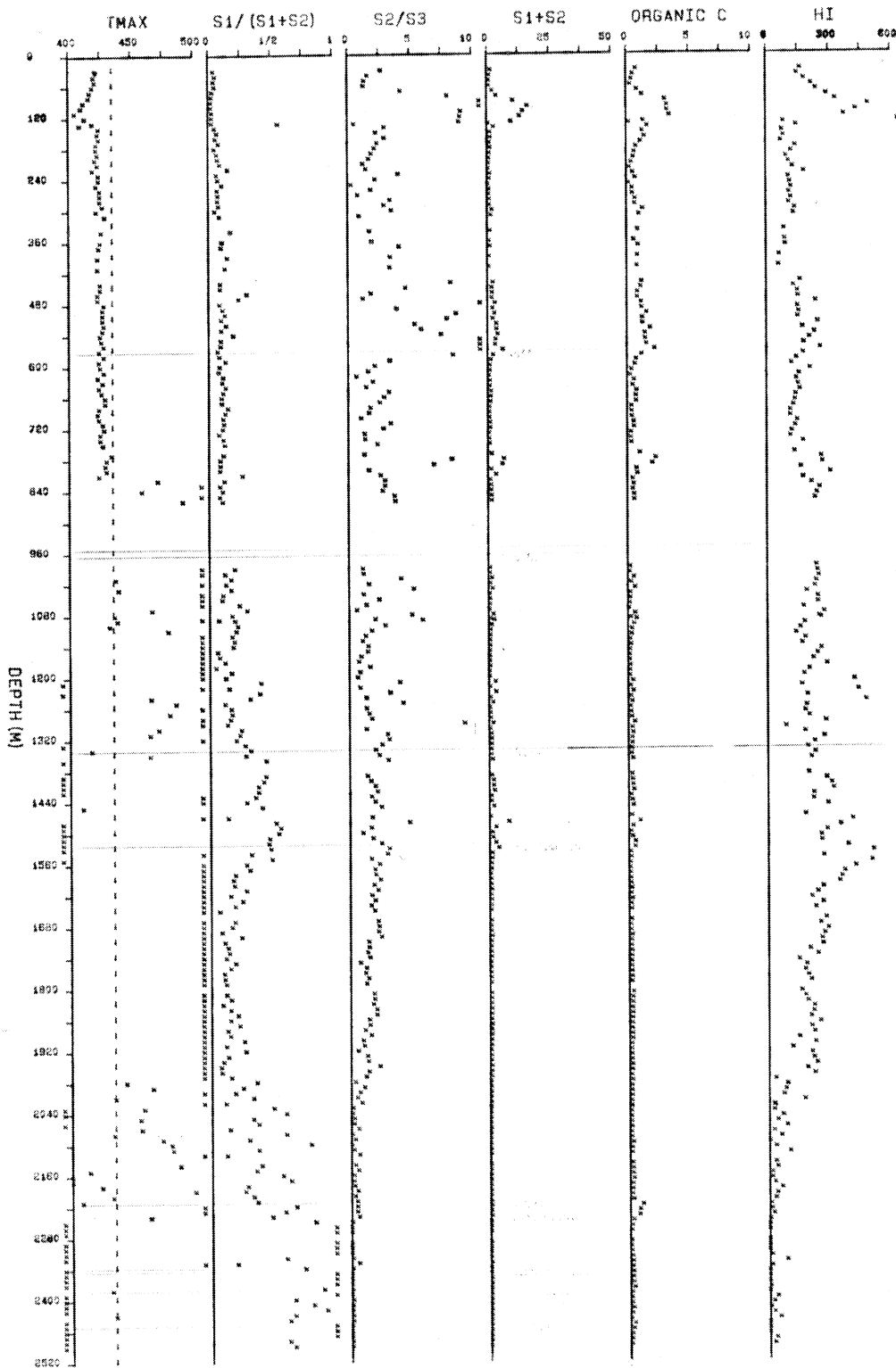
*

Imperial Sun Arrowhead 1-46



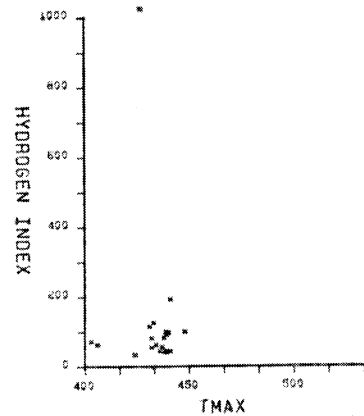
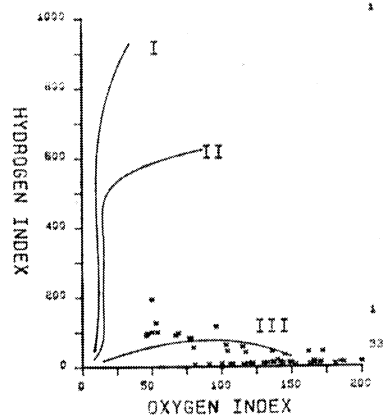
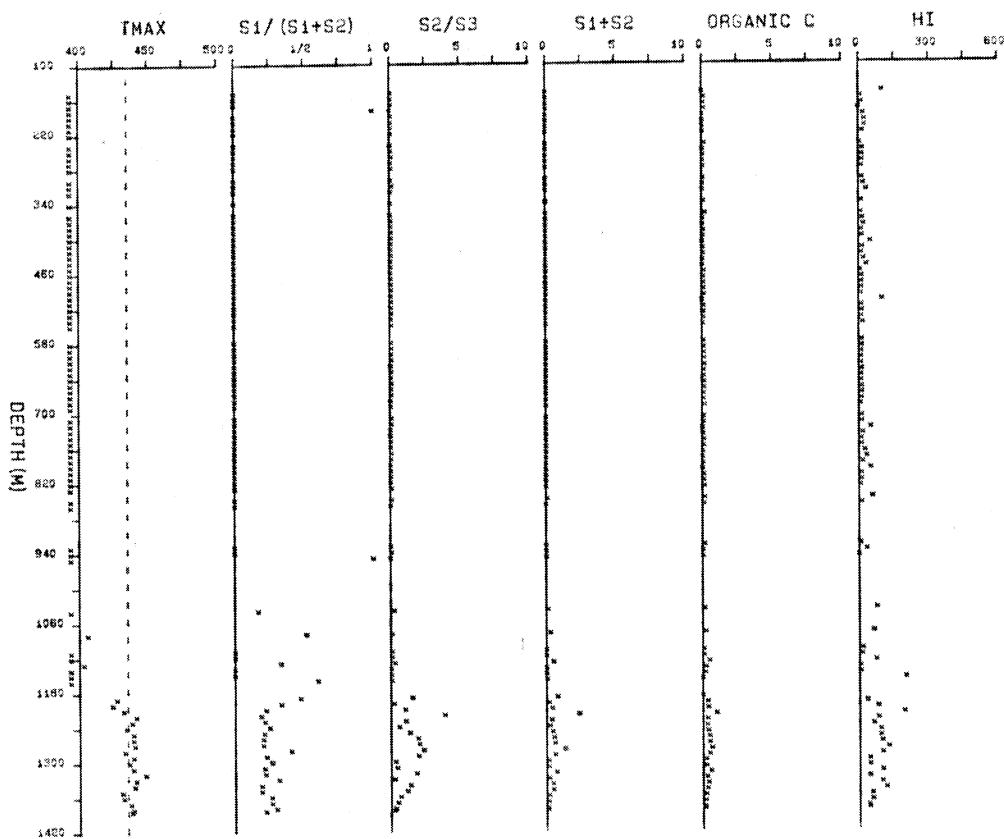
*

NSM Arrowhead G-69 (J-69)



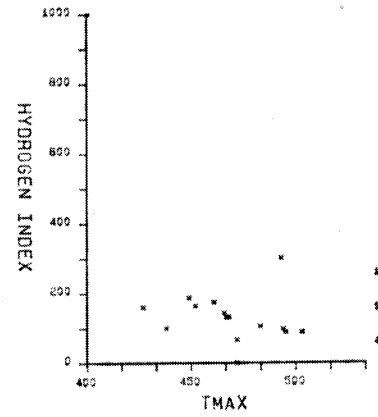
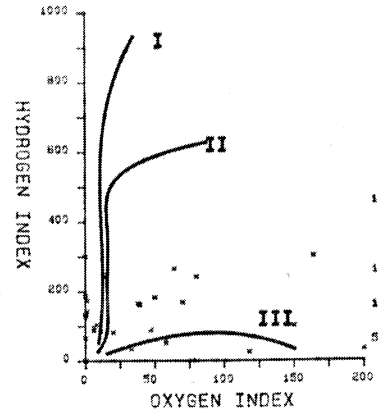
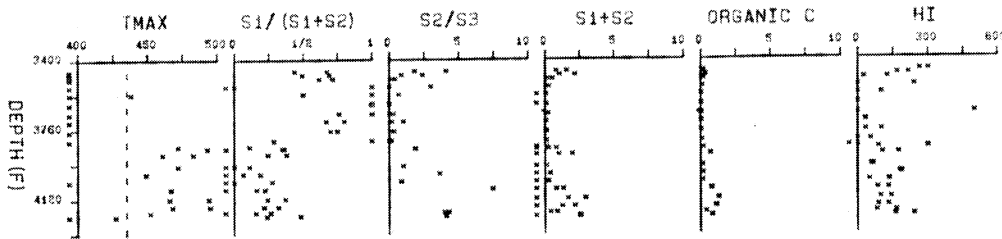
*

PCI Canterra Bele 0-35



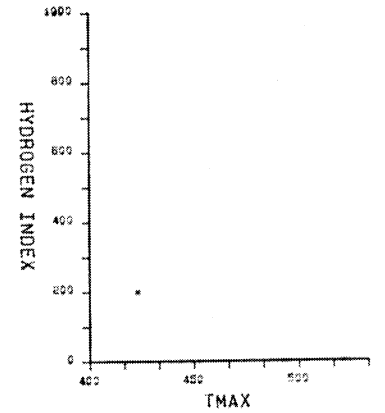
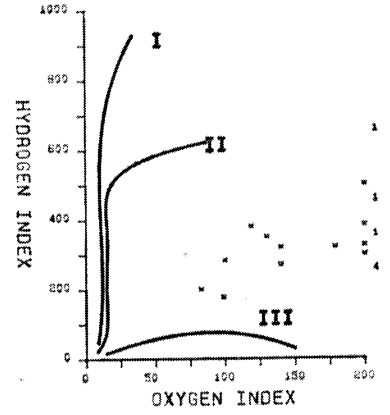
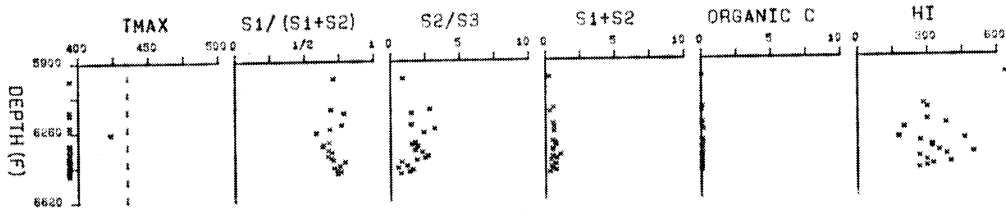
*

Mobil Belot Hills M-63



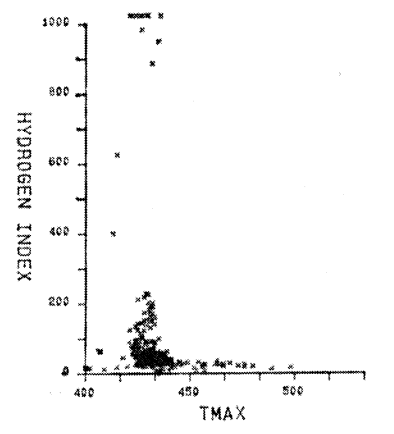
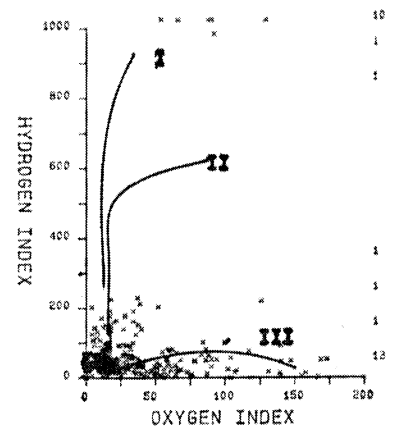
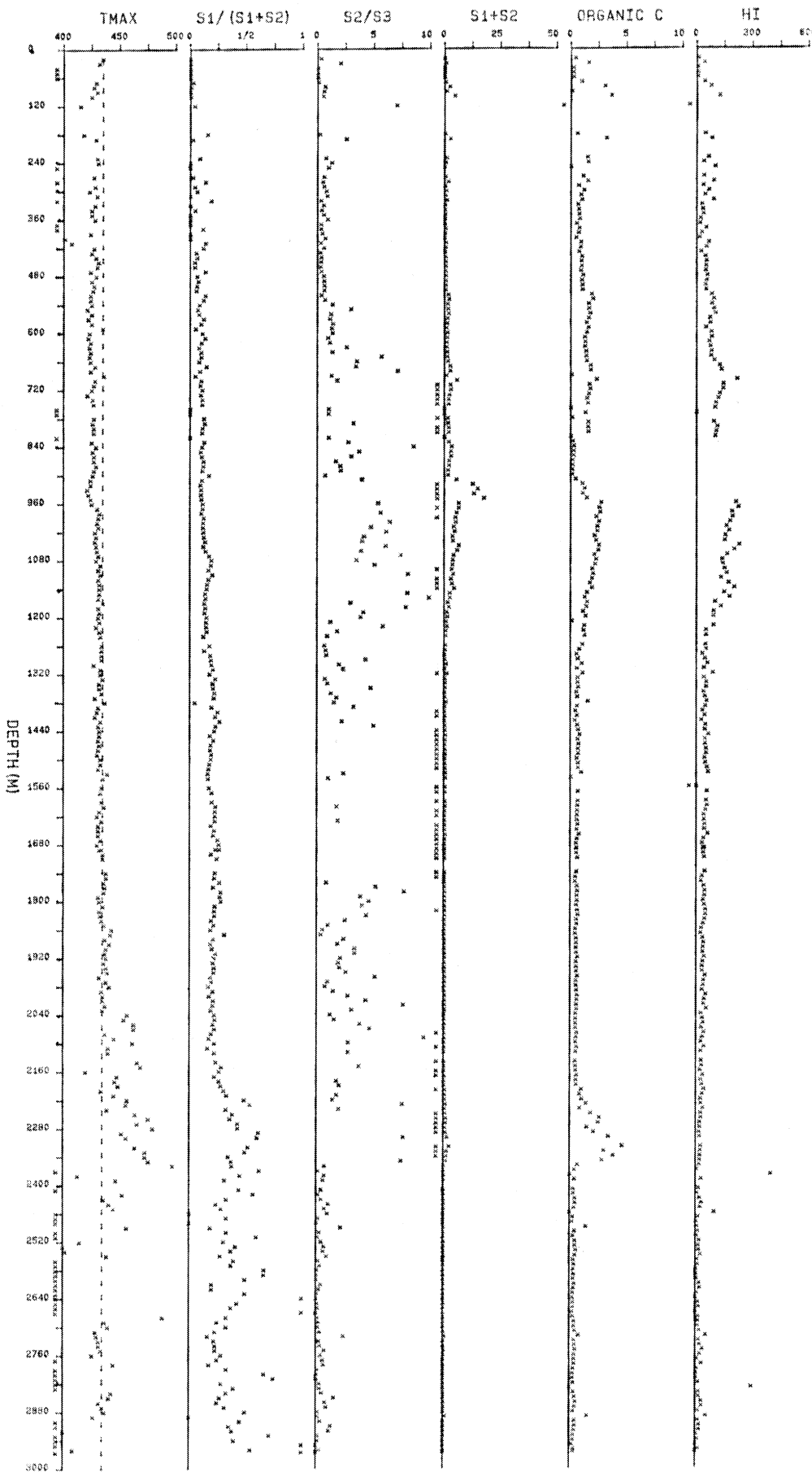
*

Shell Blackwater Lake G-52



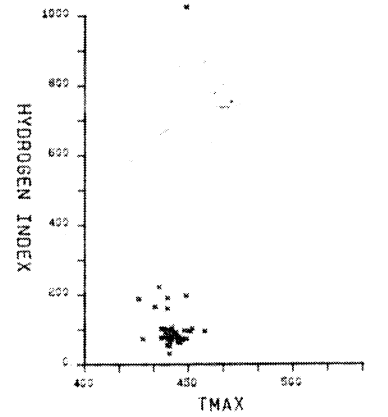
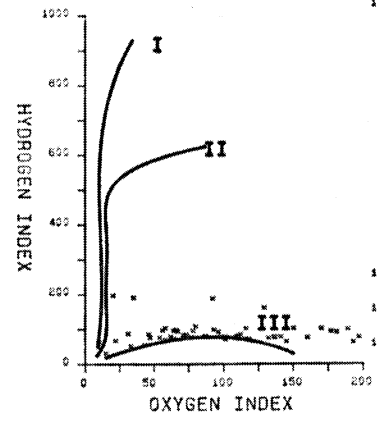
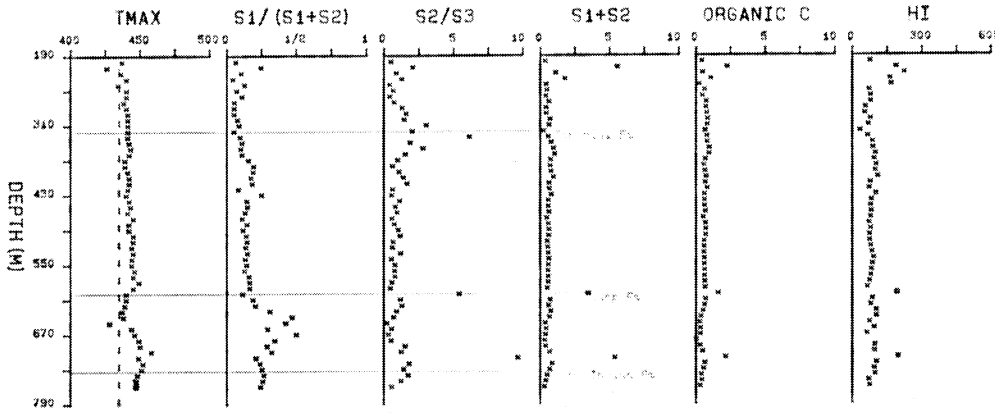
*

NSM et al Blueberry Creek K-53



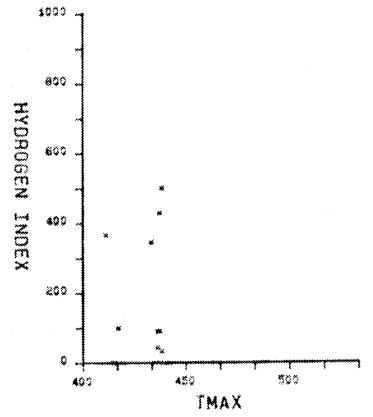
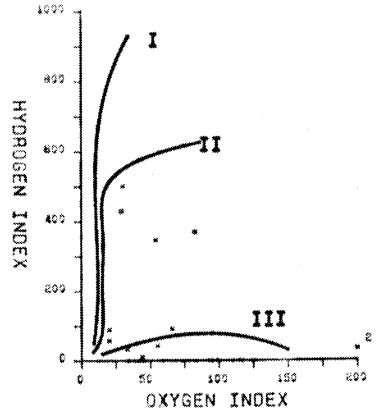
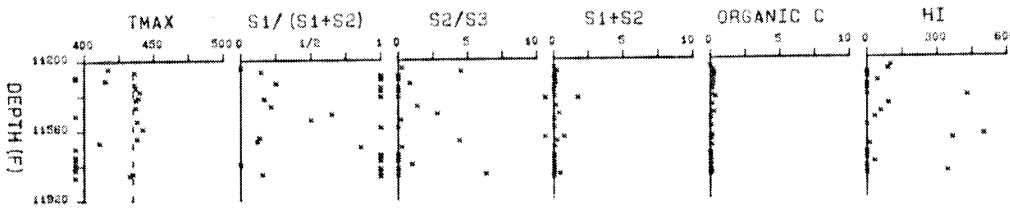
*

AT&S Texaco Carcajou 0-25



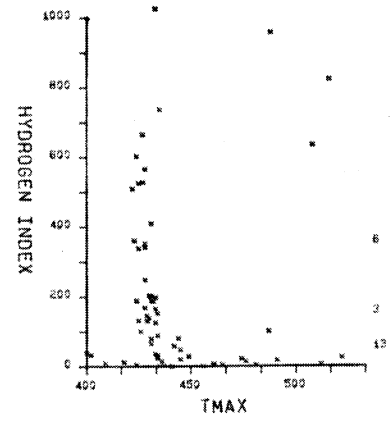
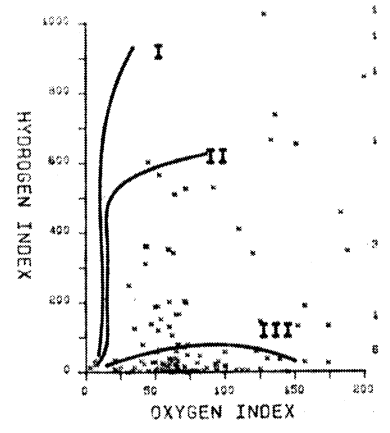
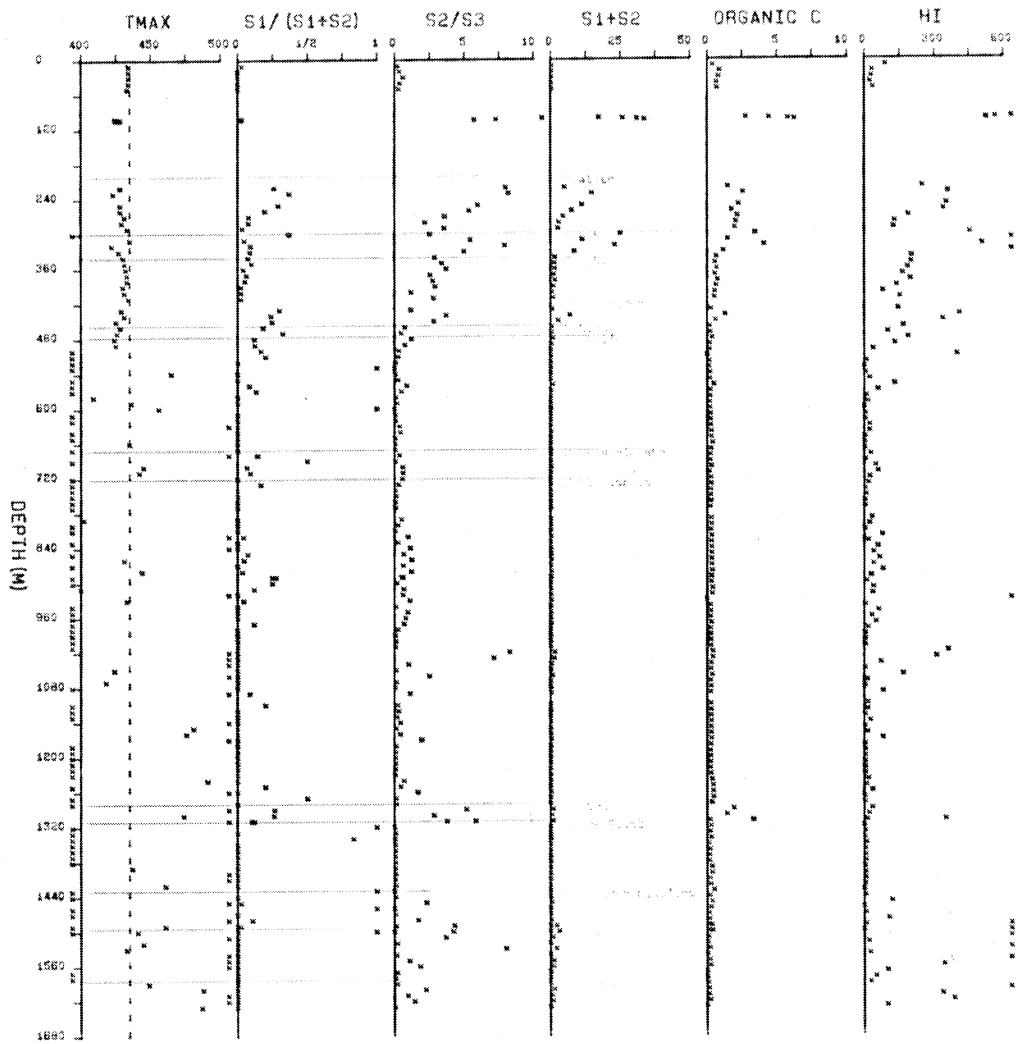
*

Gulf Mobil Caribou yt N-25



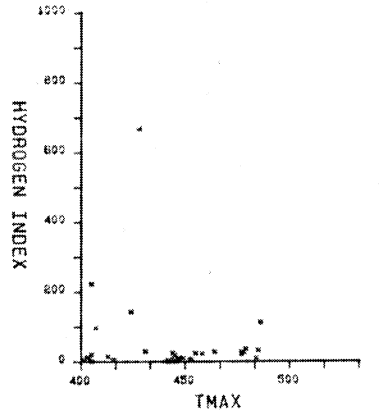
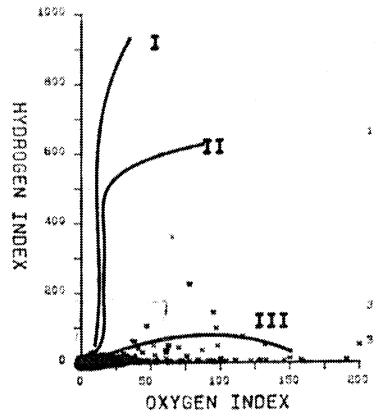
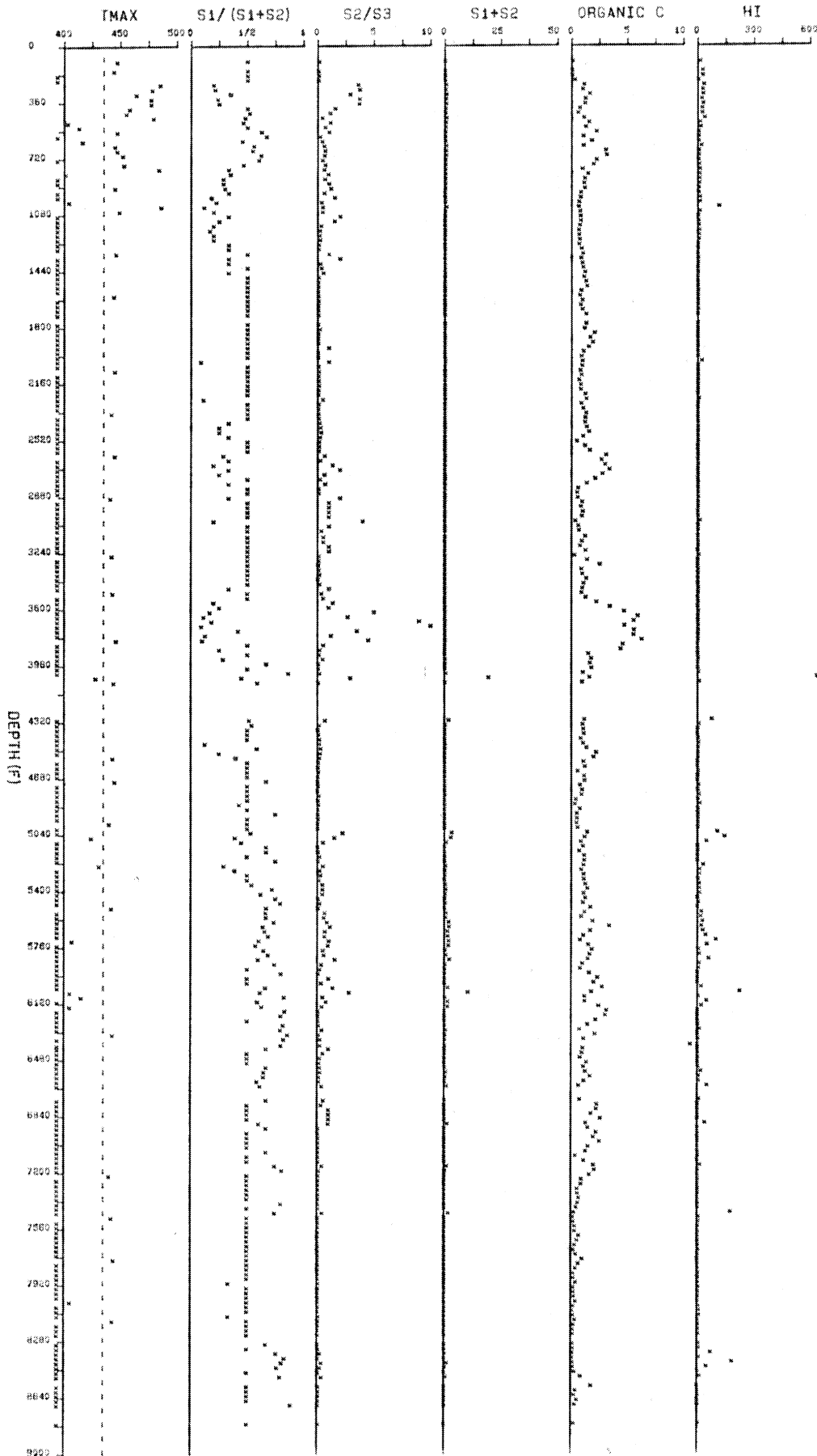
*

Northcor et al Cormack I-19

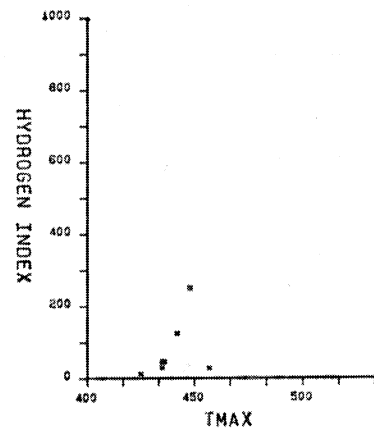
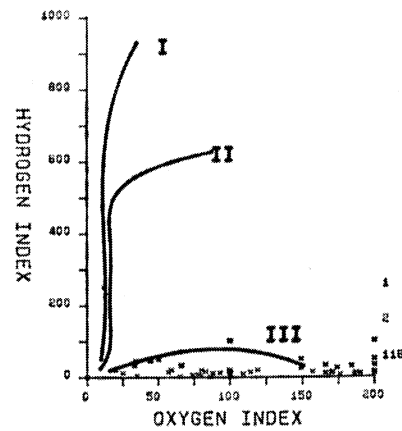
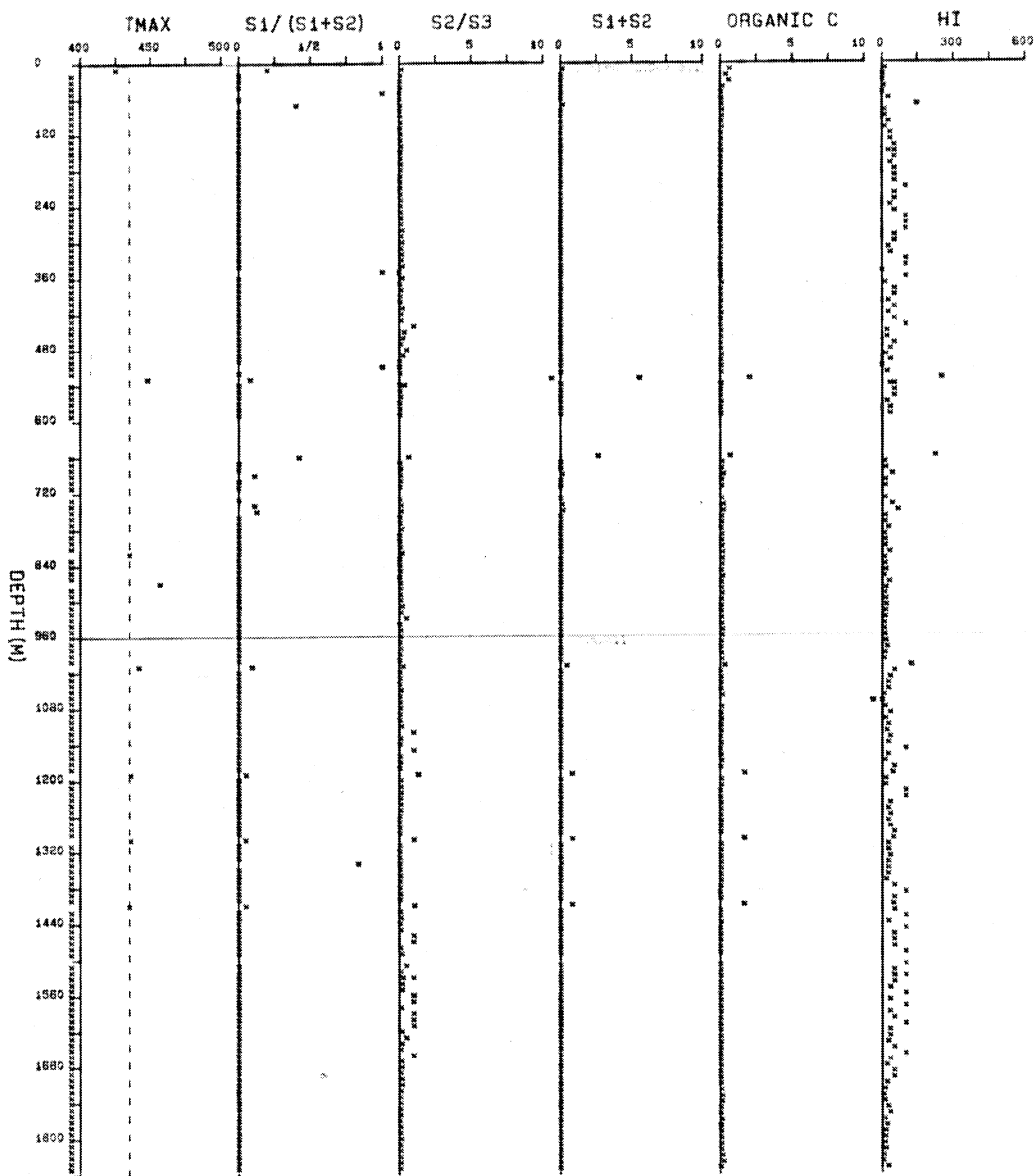




Amco PCP A-1 Cranswick A-22

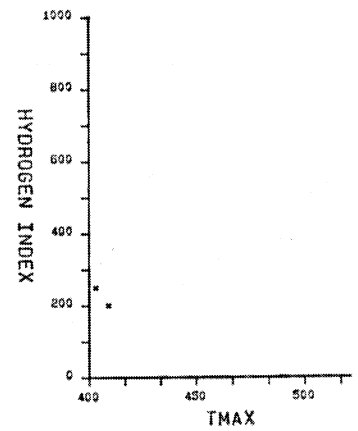
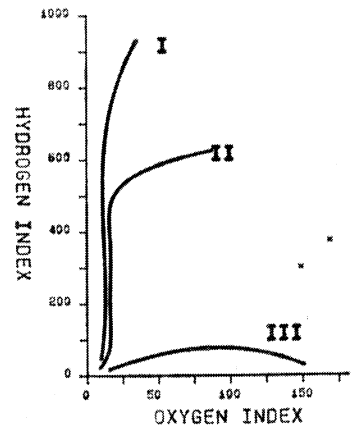


* Forward Resources et al Dahadinni J-66



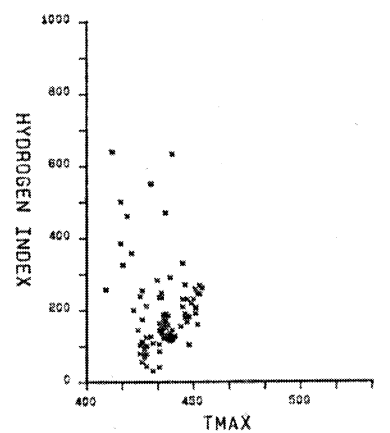
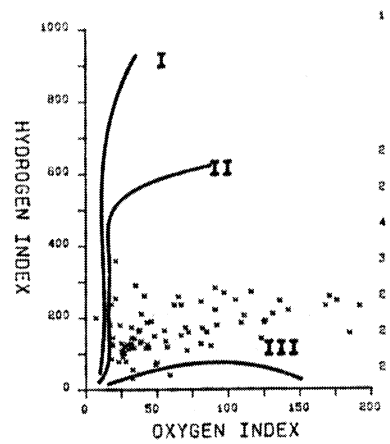
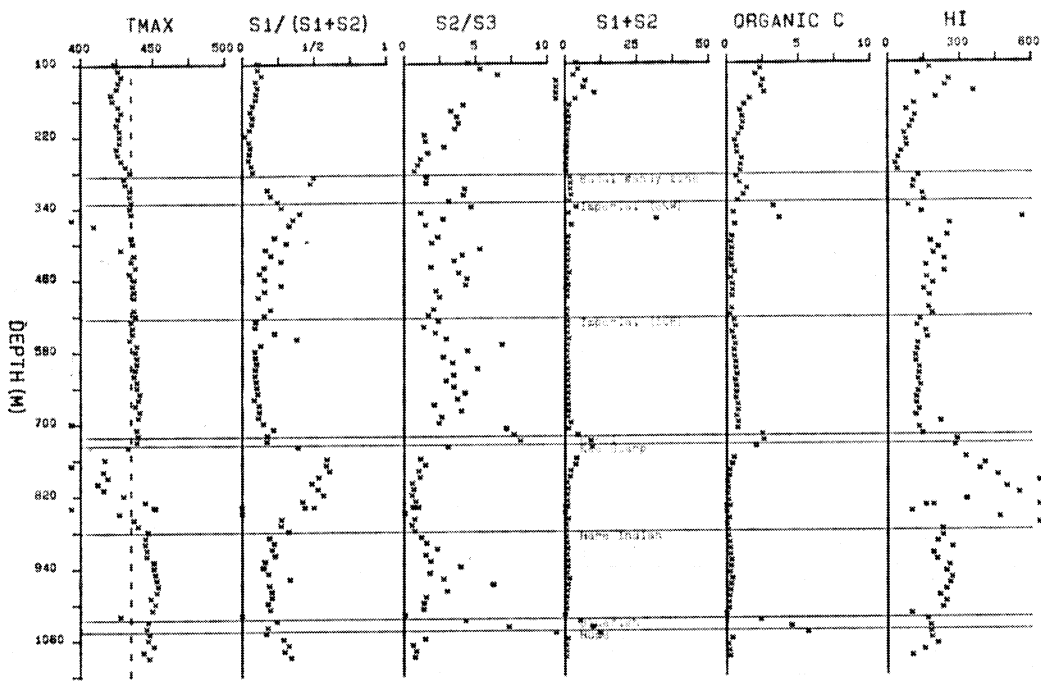
*

Union Decalthe Good Hope A-40



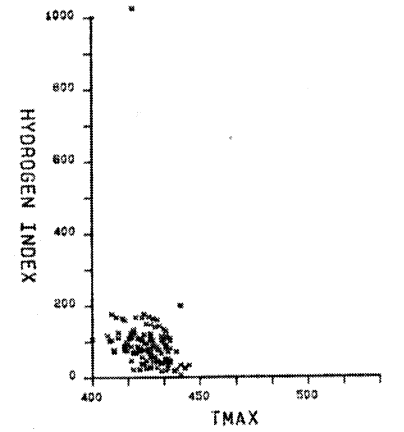
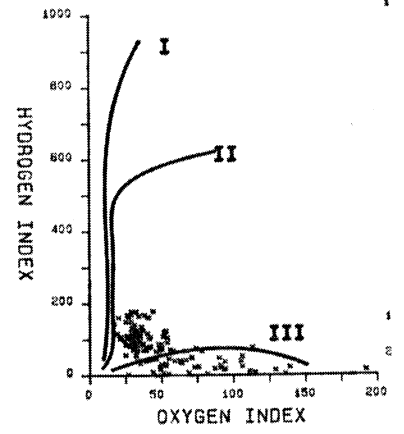
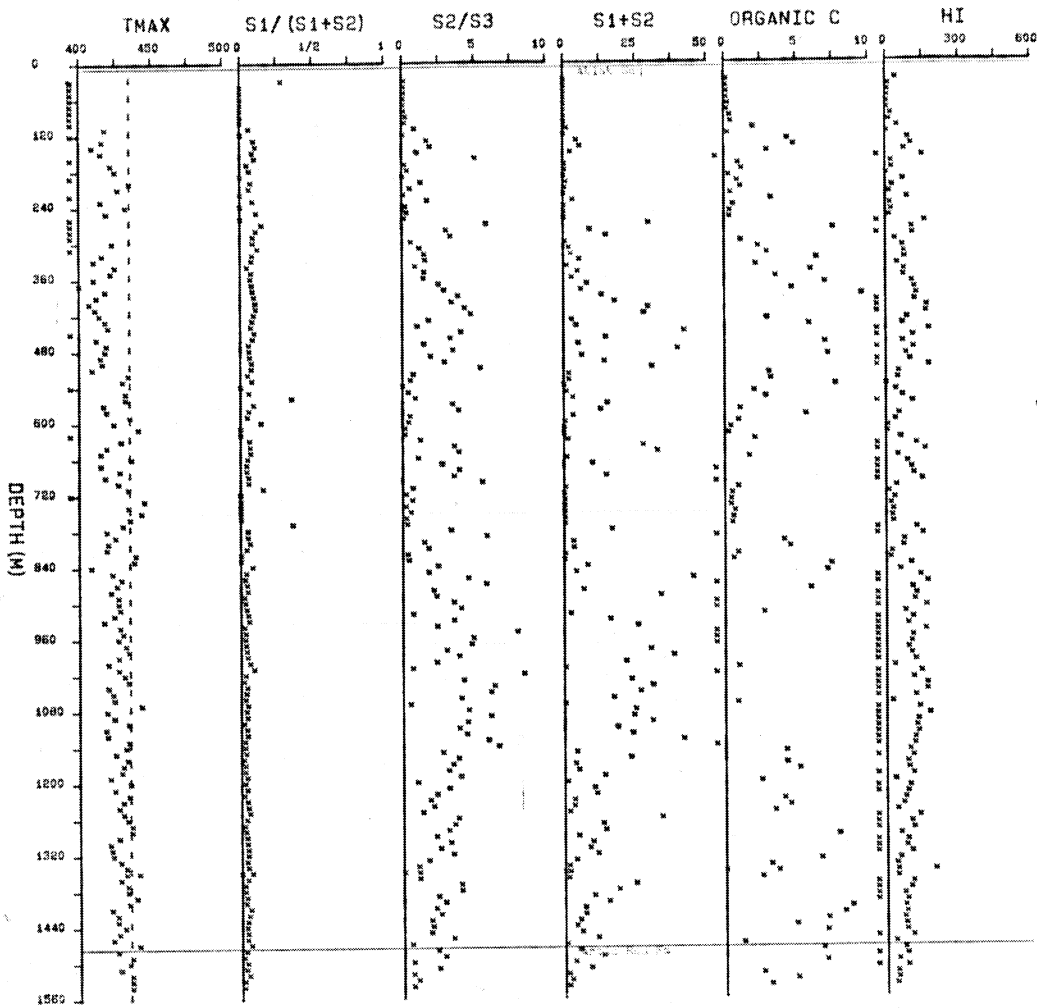
*

PCI et al Hoosier Ridge N-22



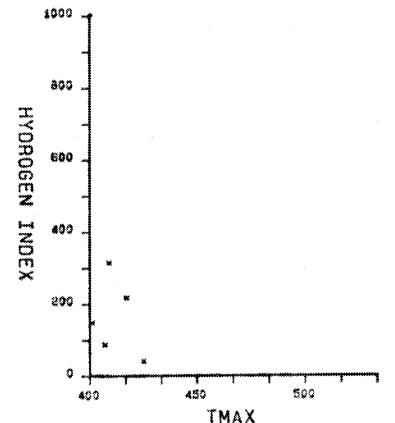
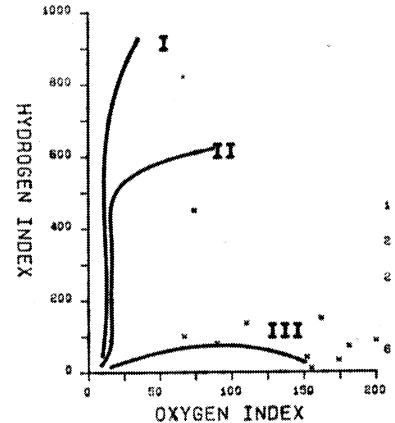
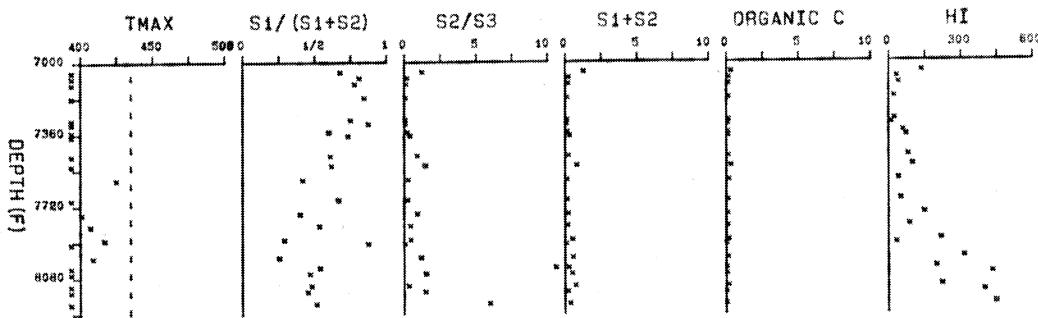
*

Gulf et al Ikhil N-35



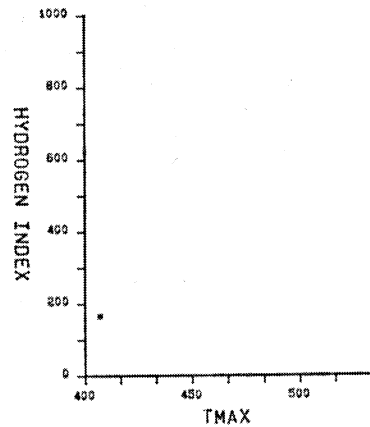
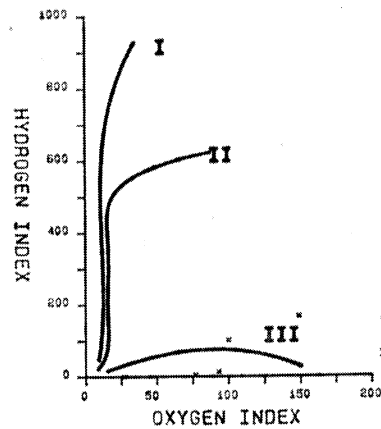
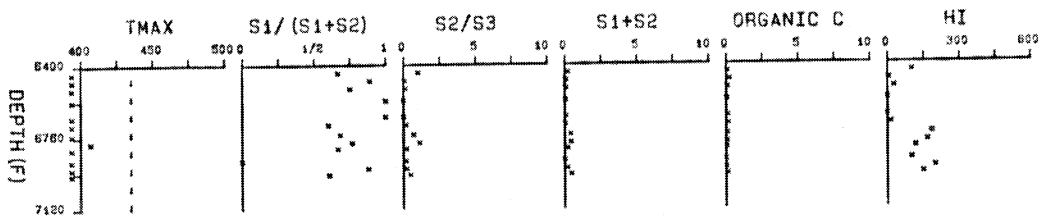
*

Mobil Inexco NCO Sun Iroquois D-40



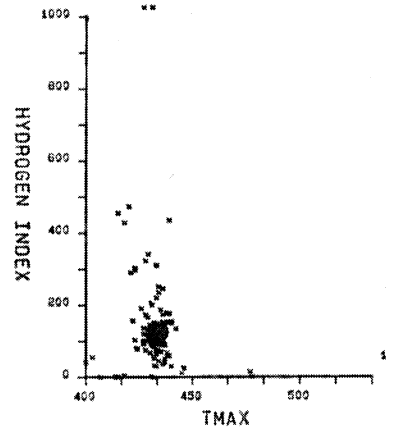
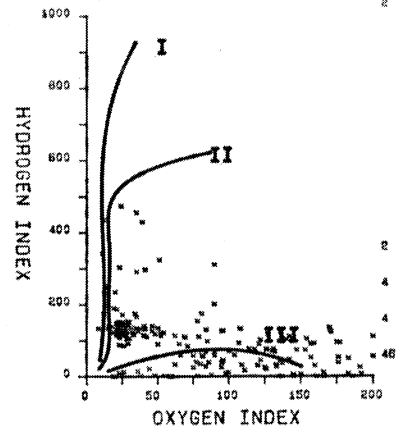
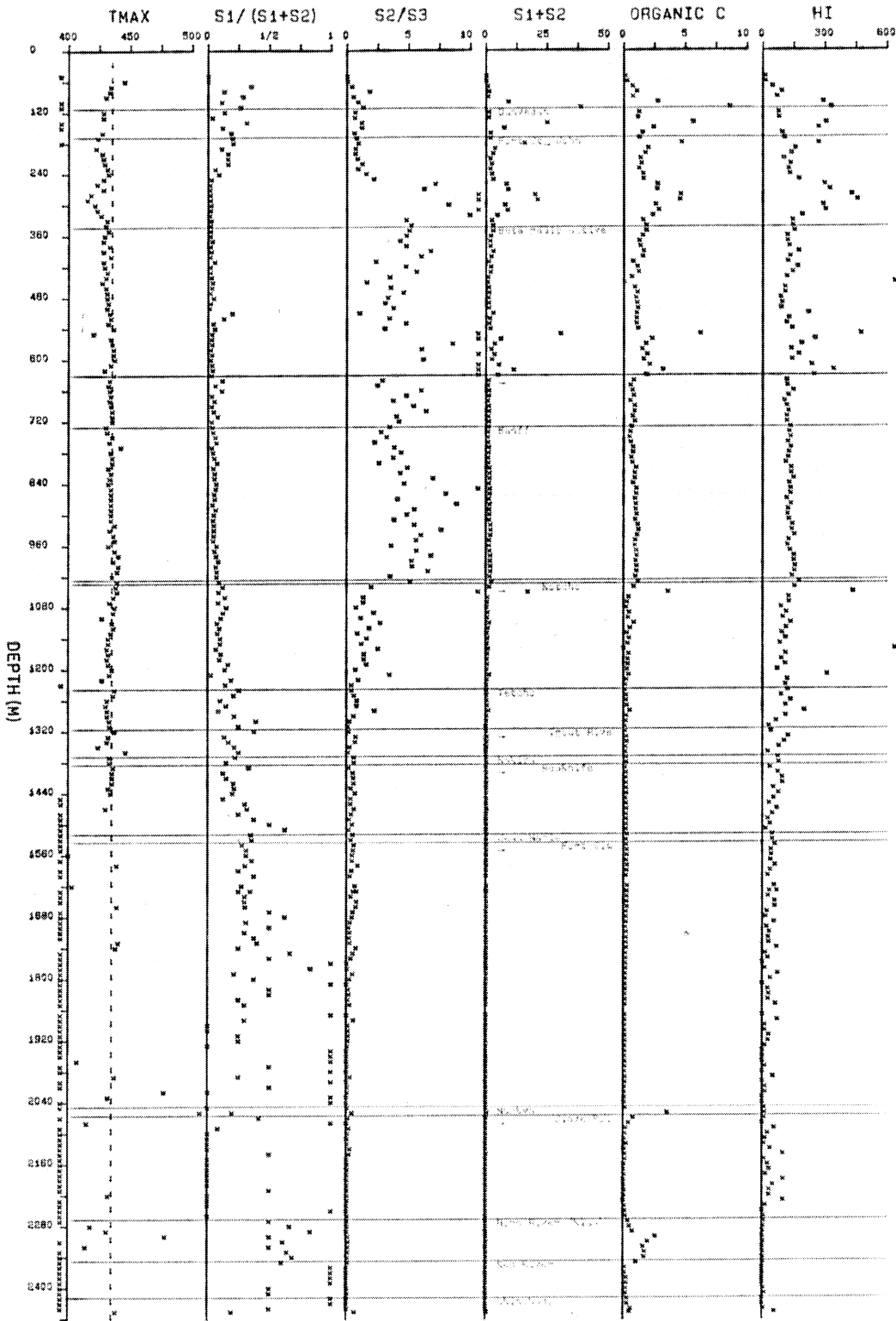
*

Candel Mobil et al Iroquois I-11



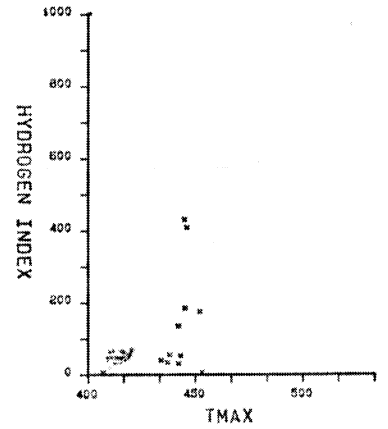
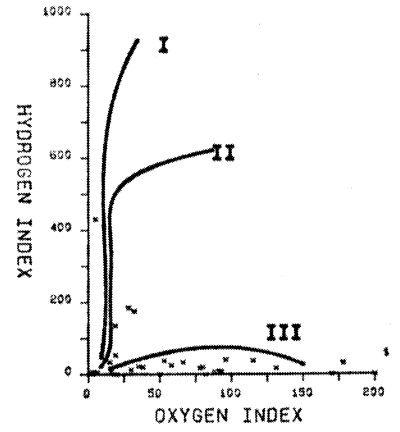
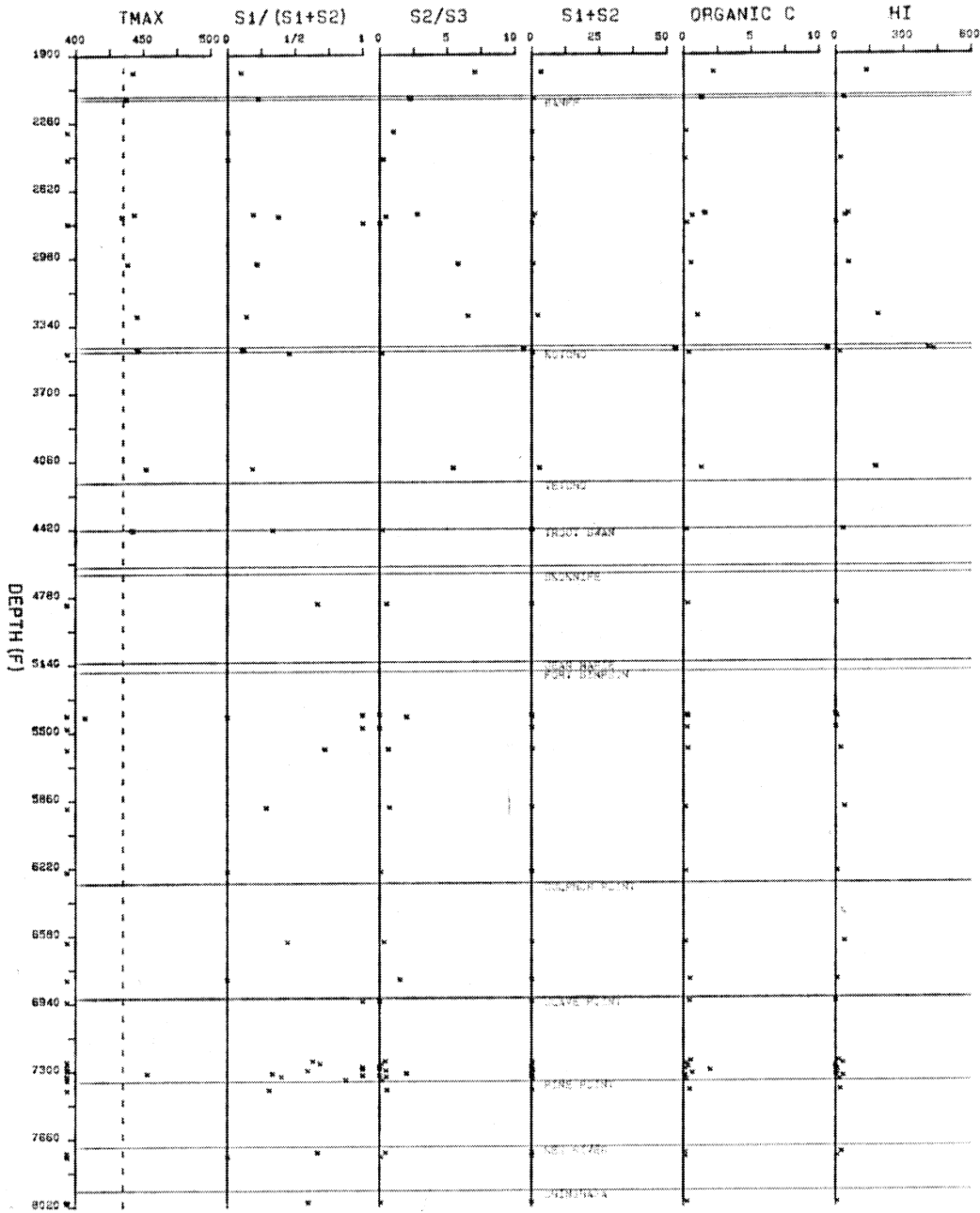


Northcor et al Island River G-38



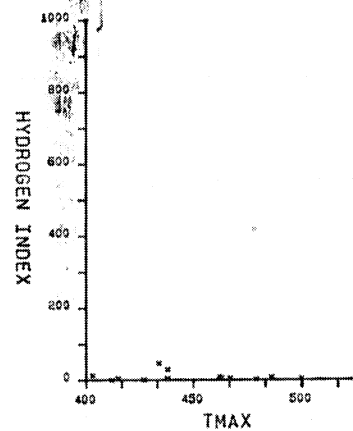
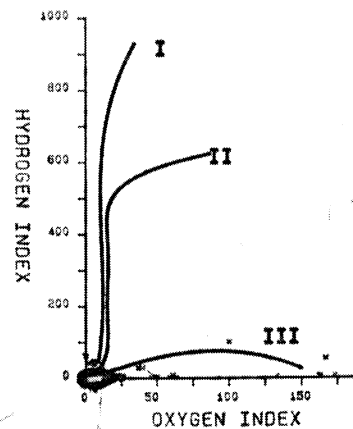
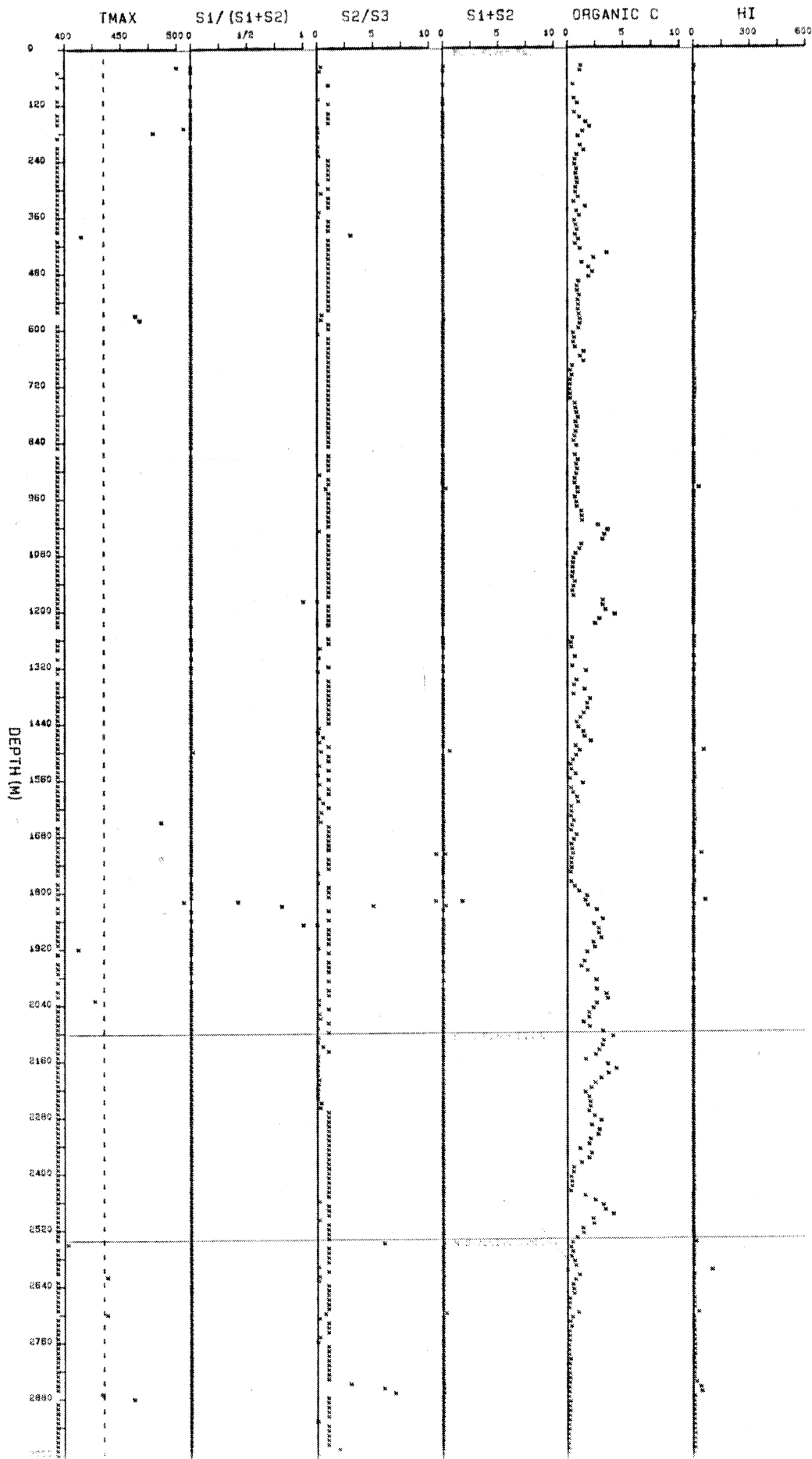
*

Imperial Island River #1 G-50



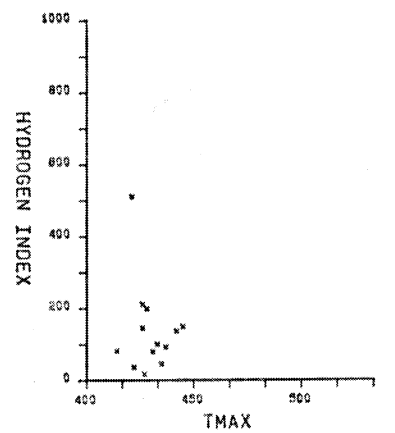
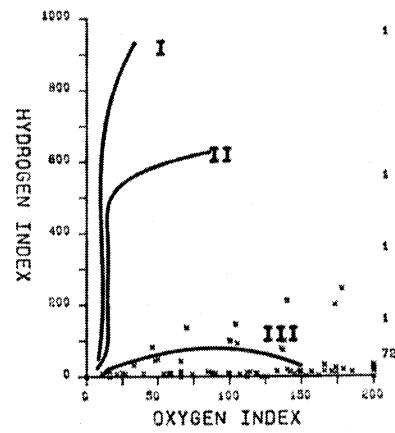
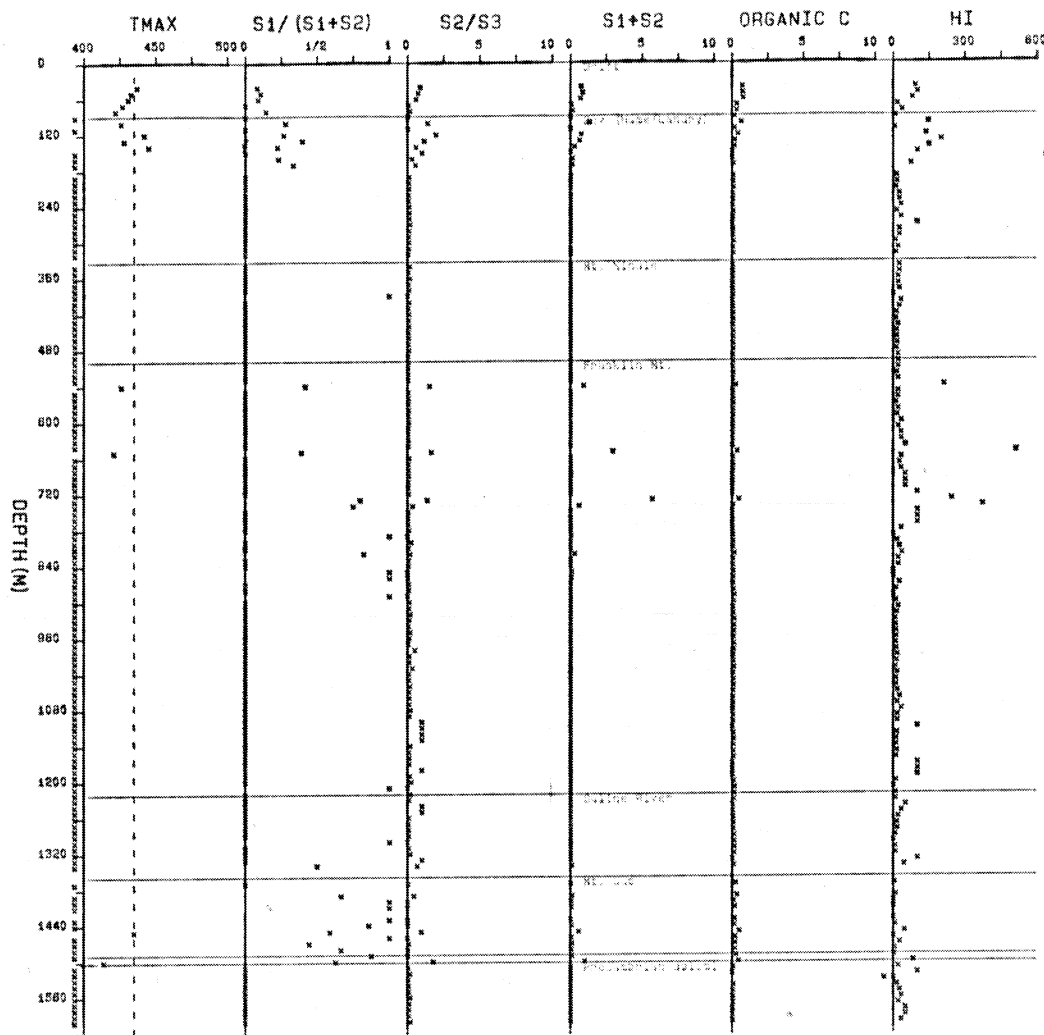
*

Northcor et al Jackfish L-63



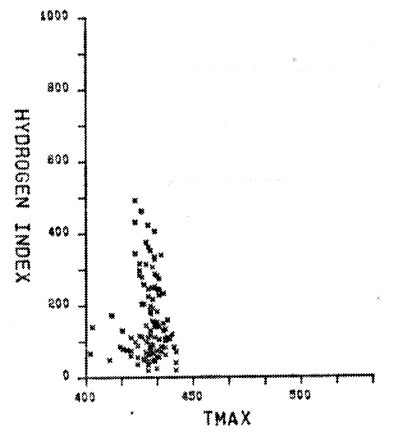
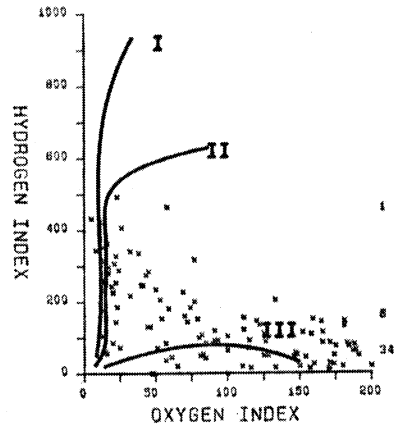
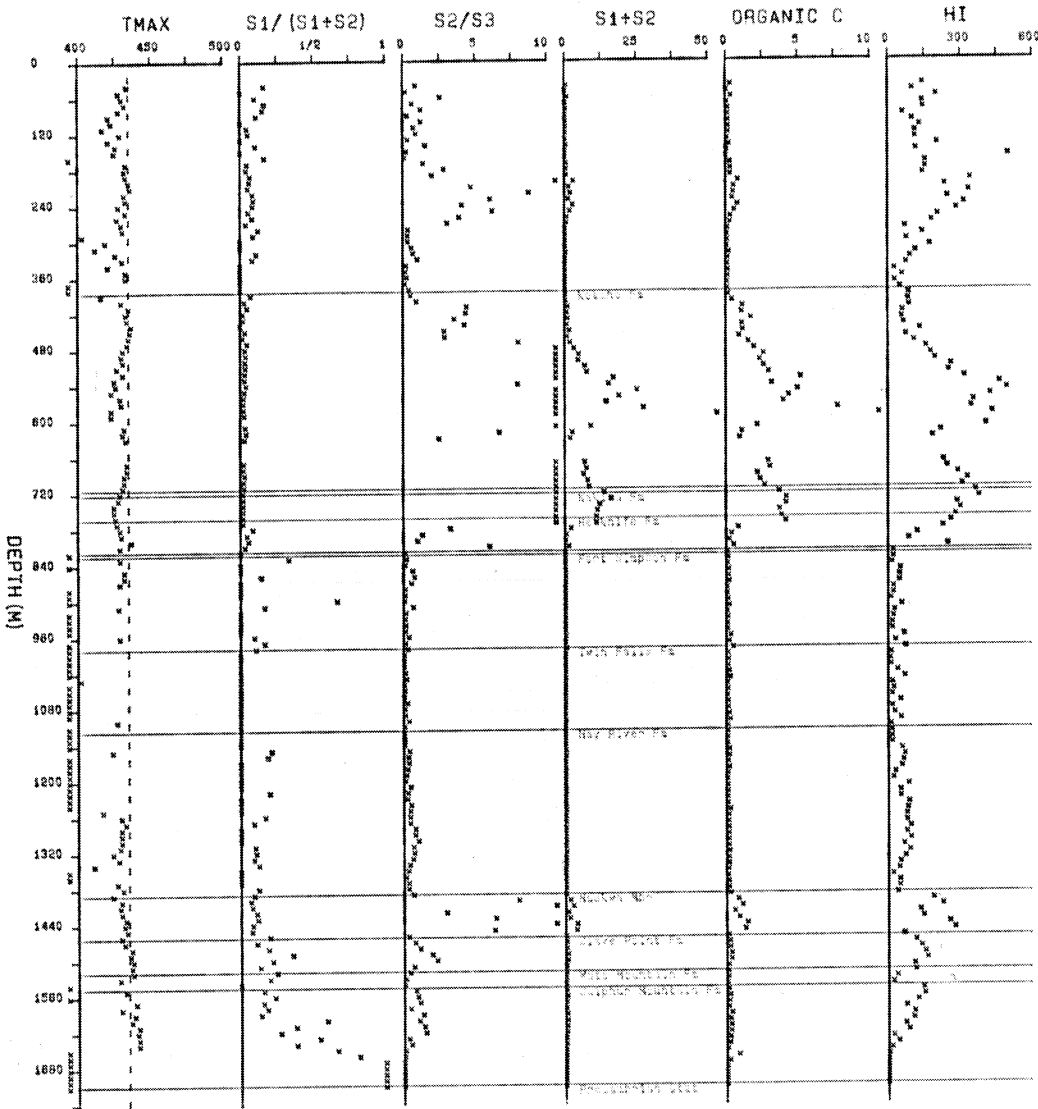
*

PCI Westcoast K'ahbami H-56



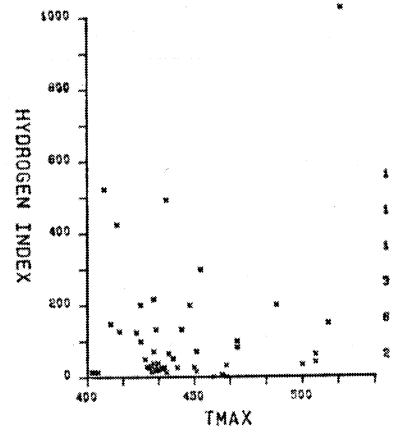
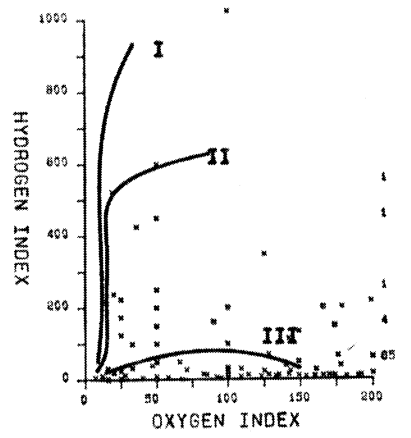
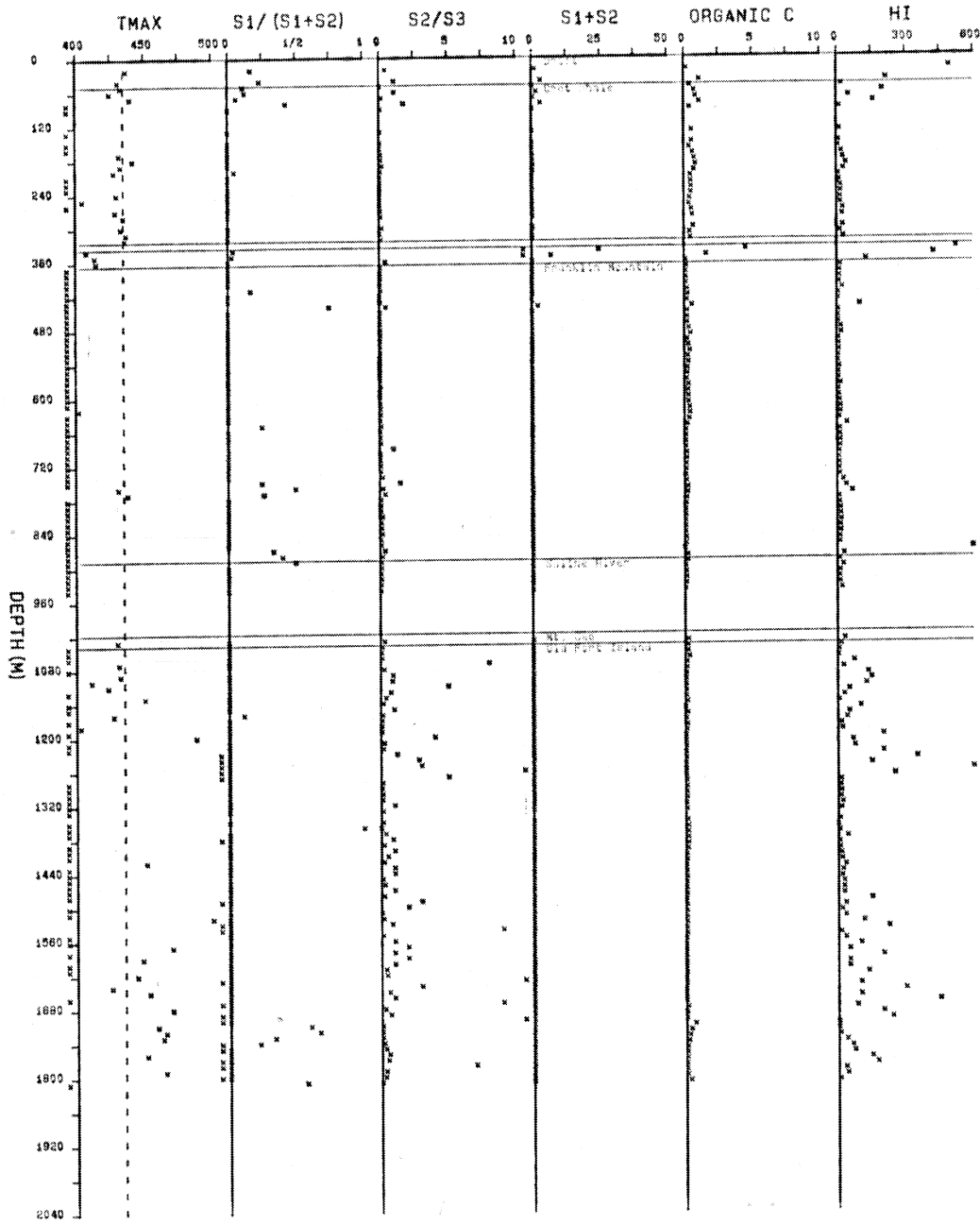


Northcor et al Kakisa River F-56



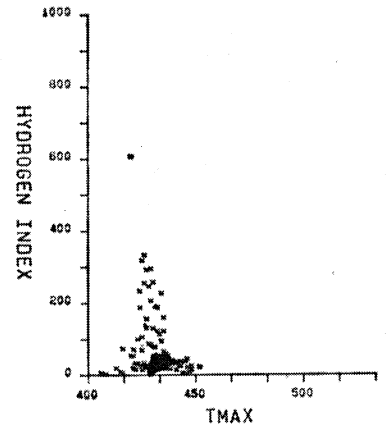
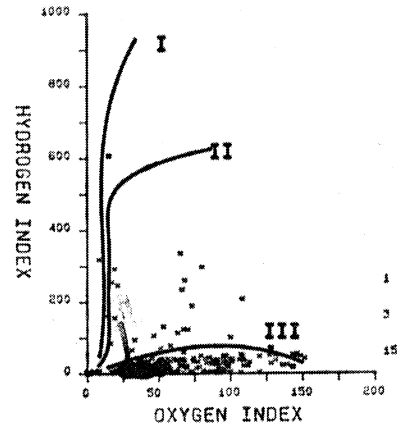
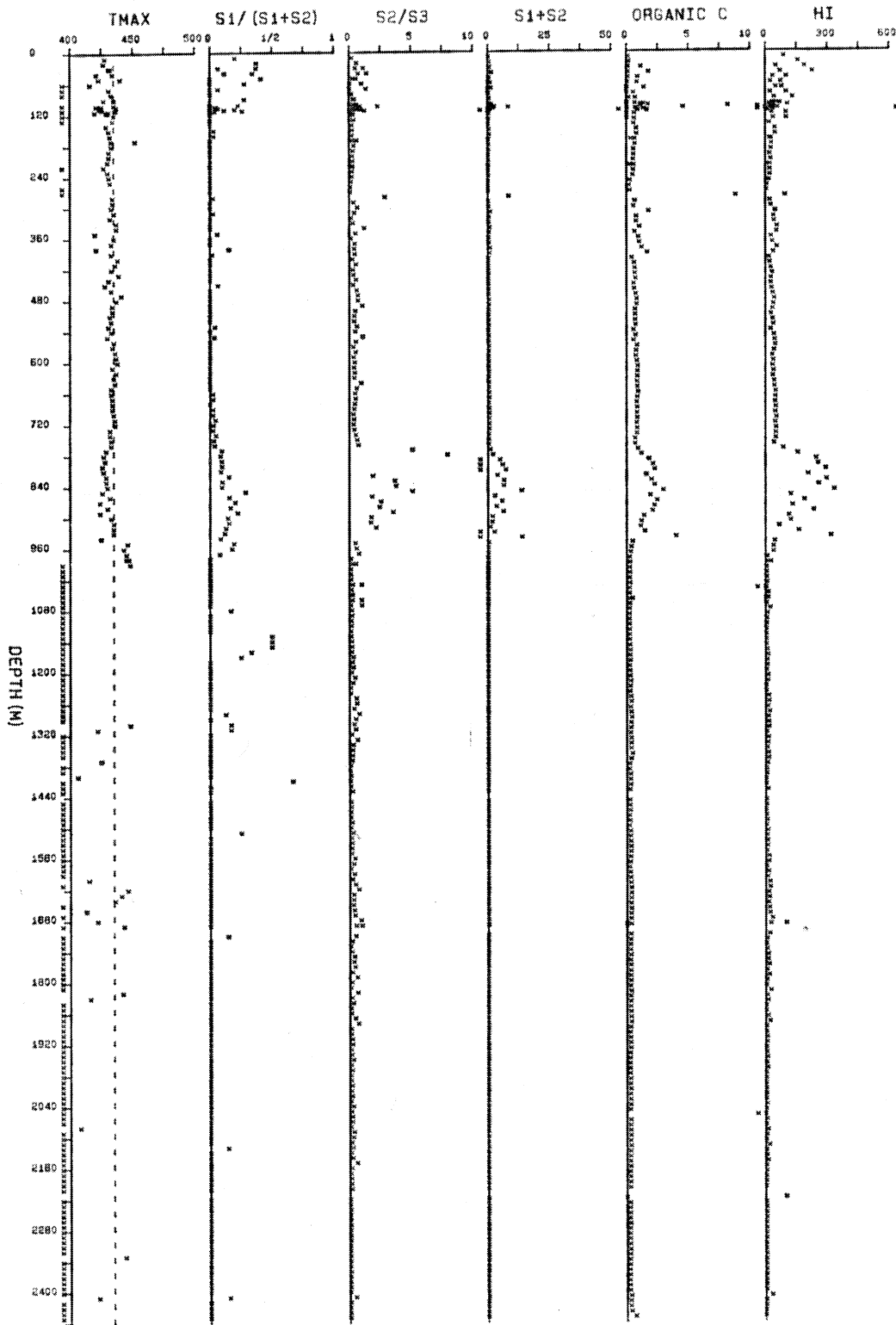
*

PCI K'alo B-62



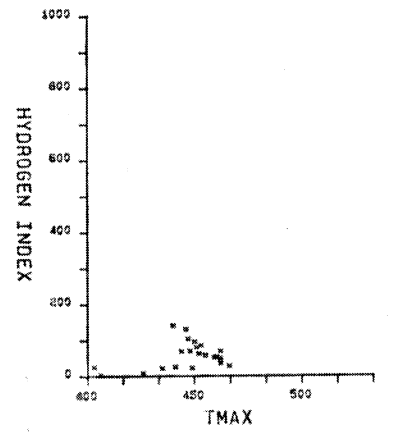
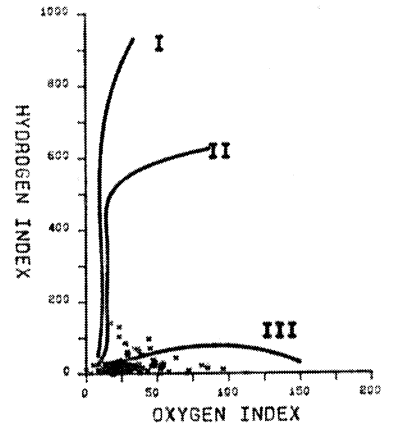
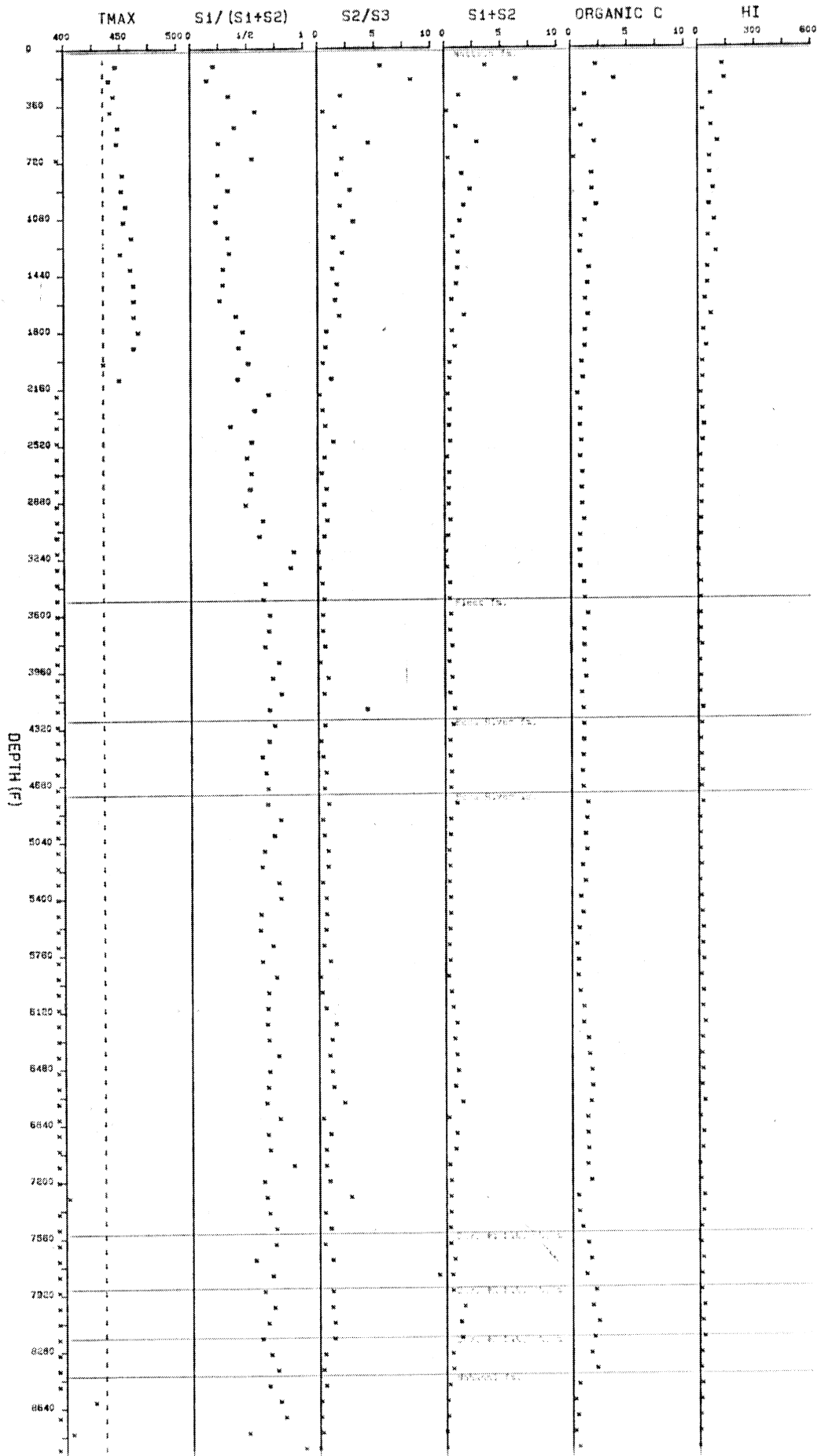
*

Esso AT&S Decalta Keele S. E-19



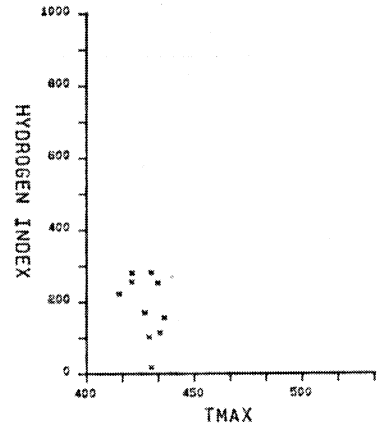
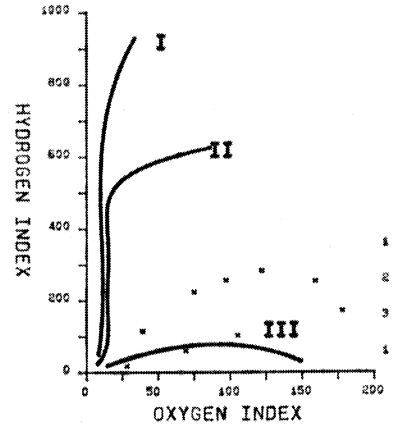
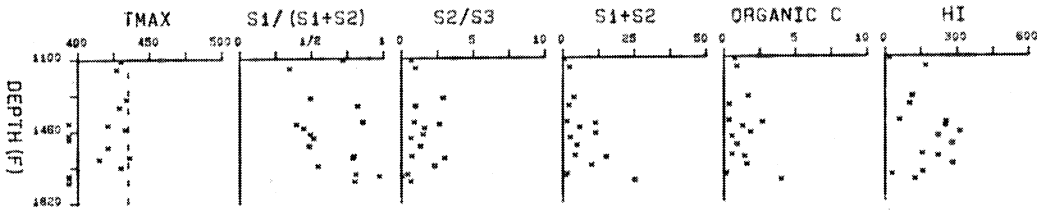
*

Pan Am Kotaneelee 0-67

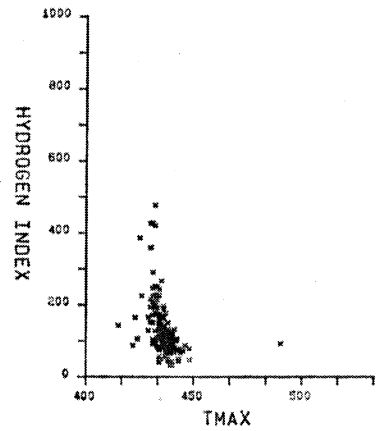
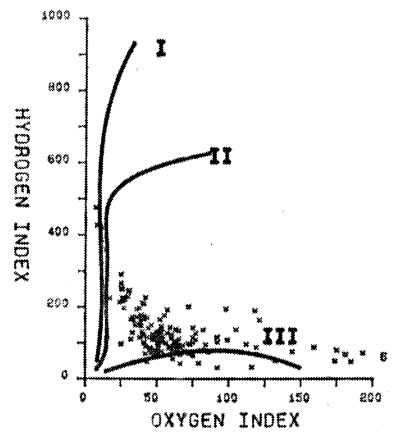
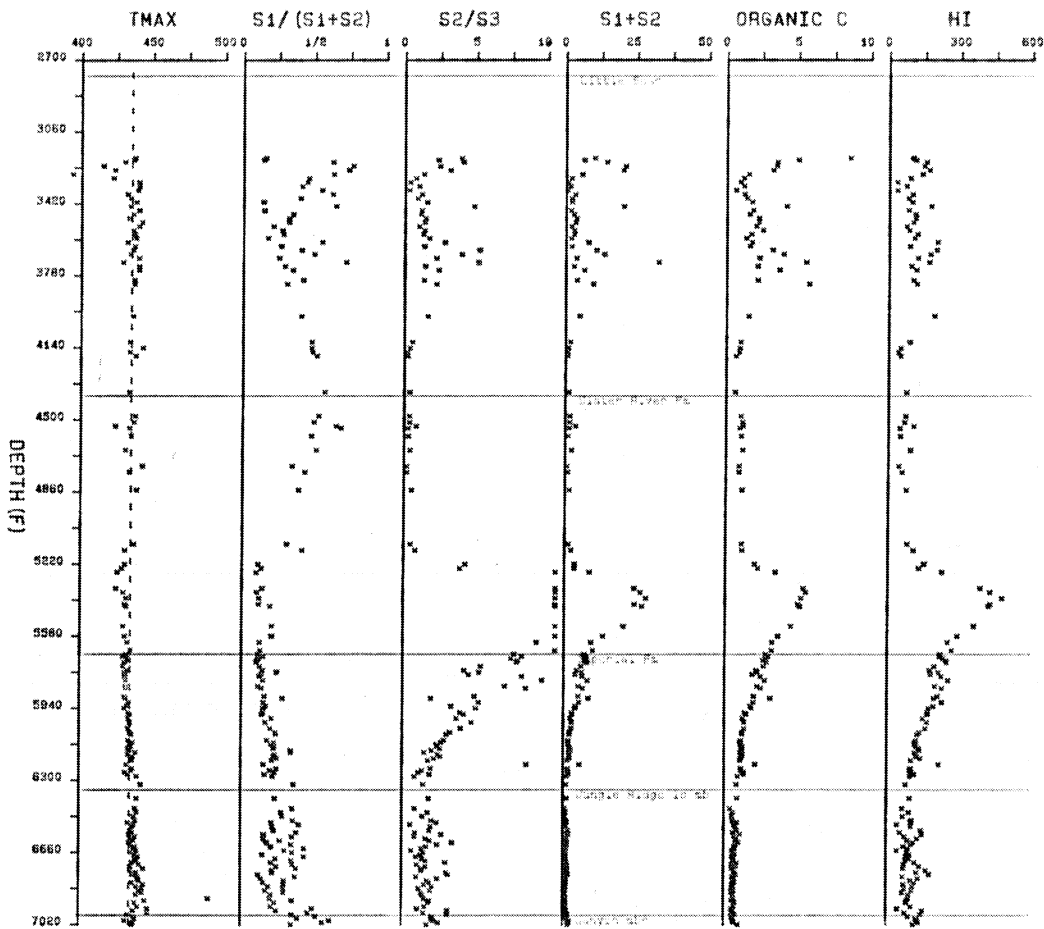


*

Imperial Lac Tache F-35

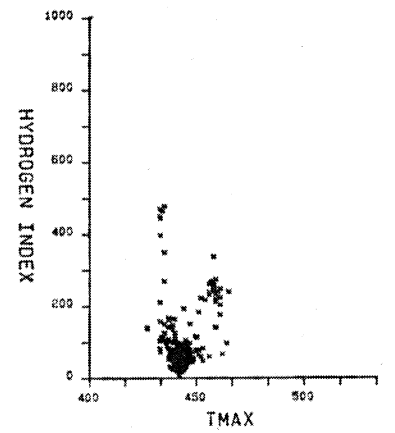
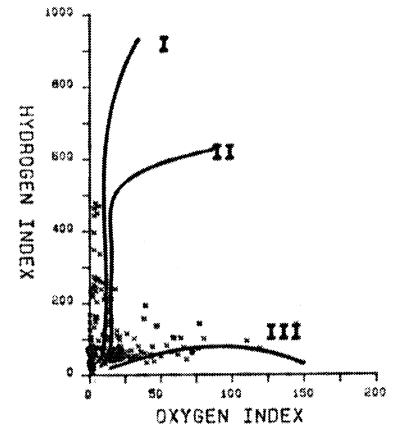
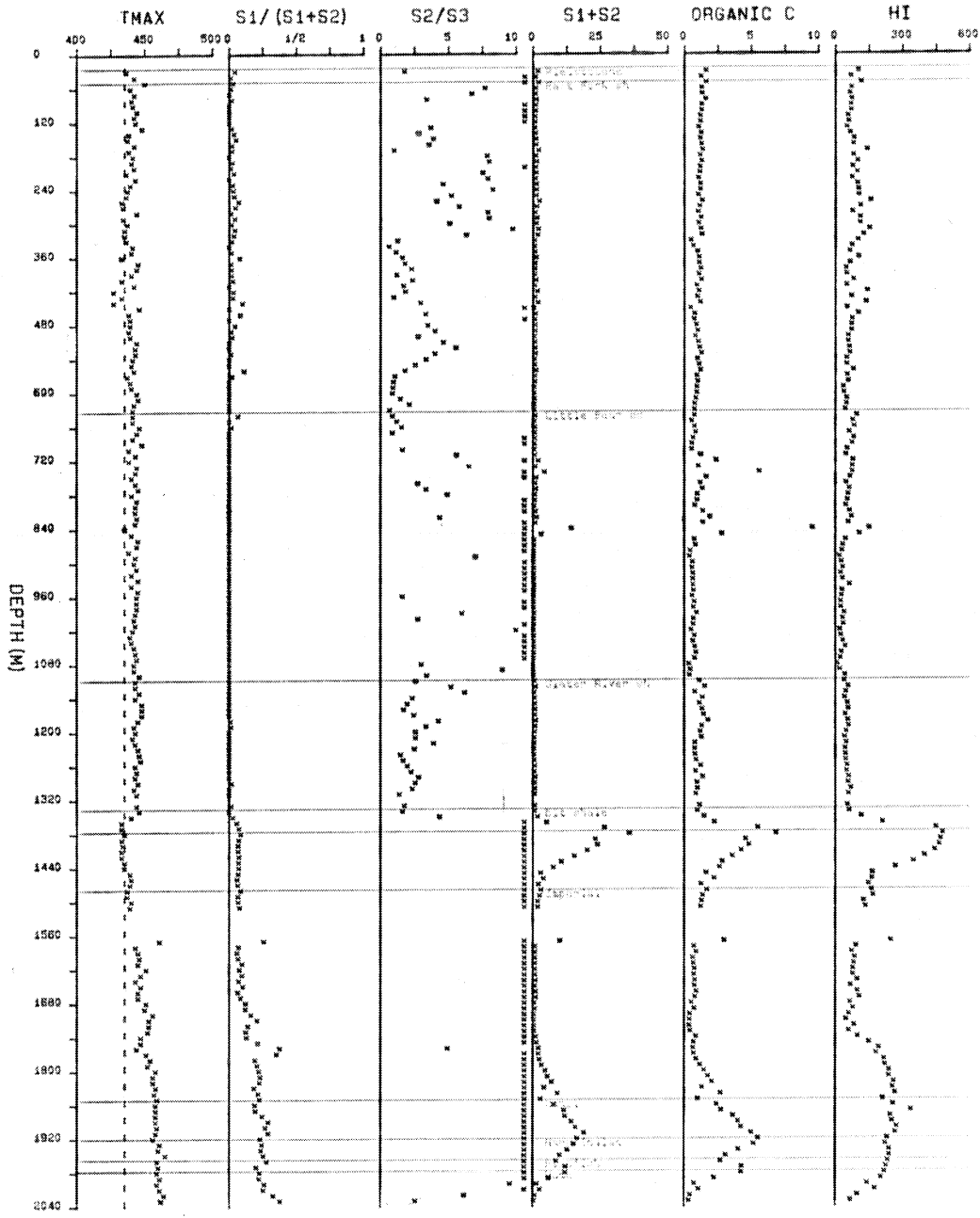


* Candex Amoco Shell Little Bear I-70



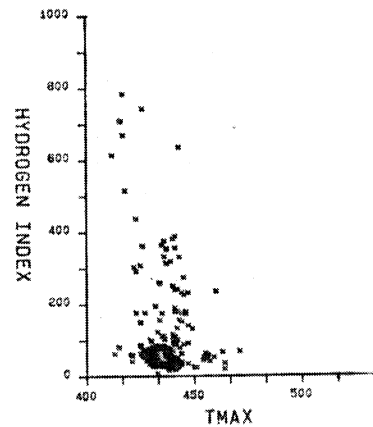
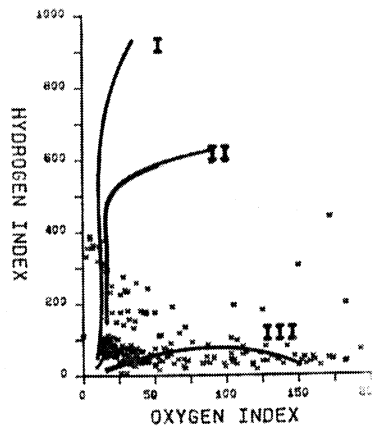
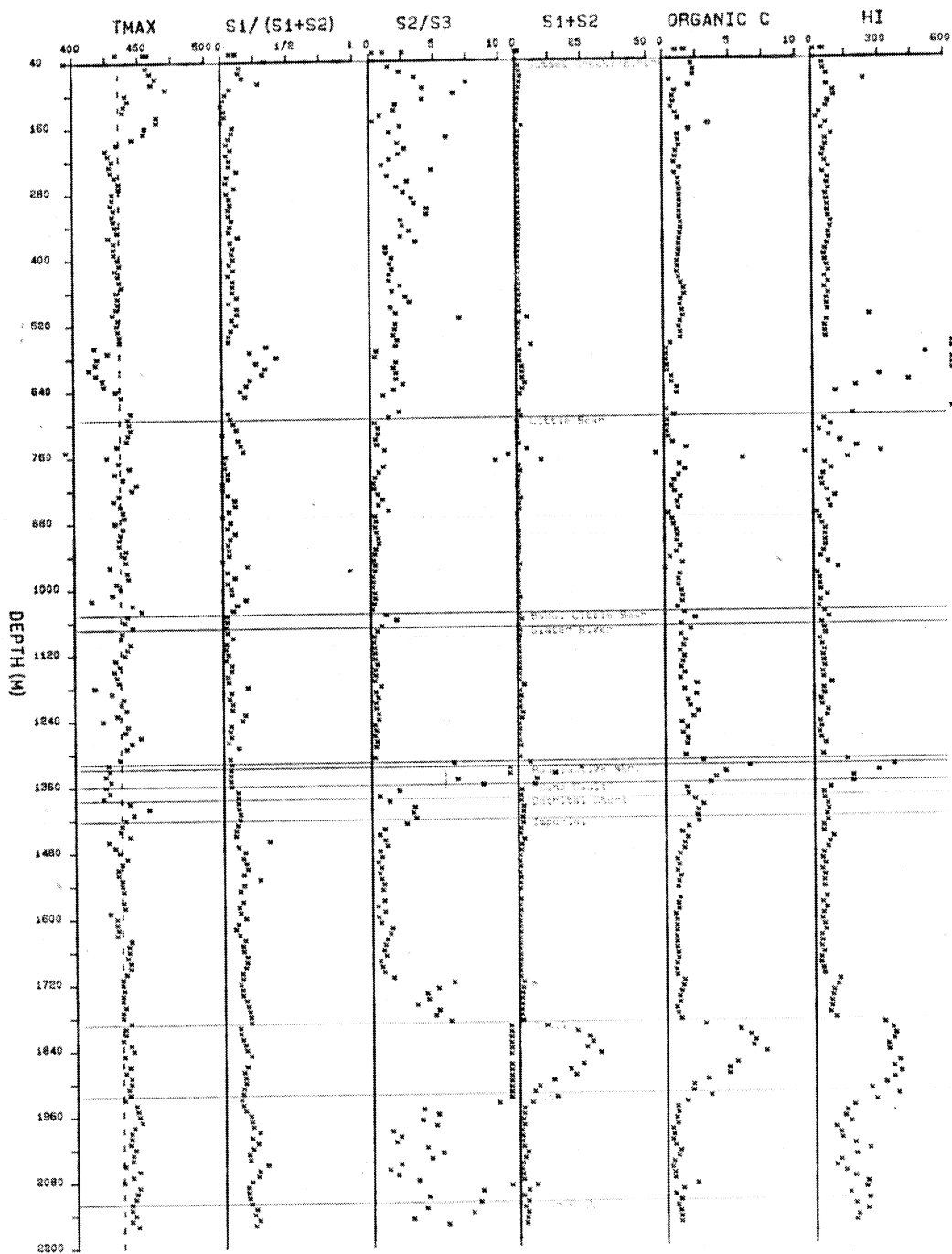
*

Conoco et al North Little Bear L-21



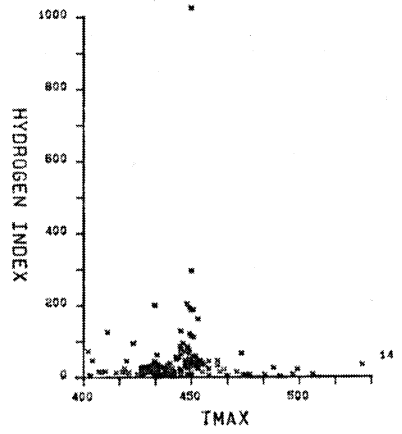
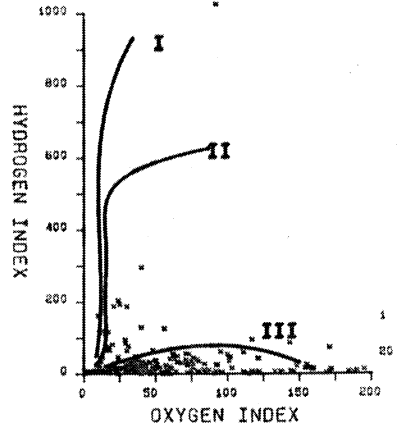
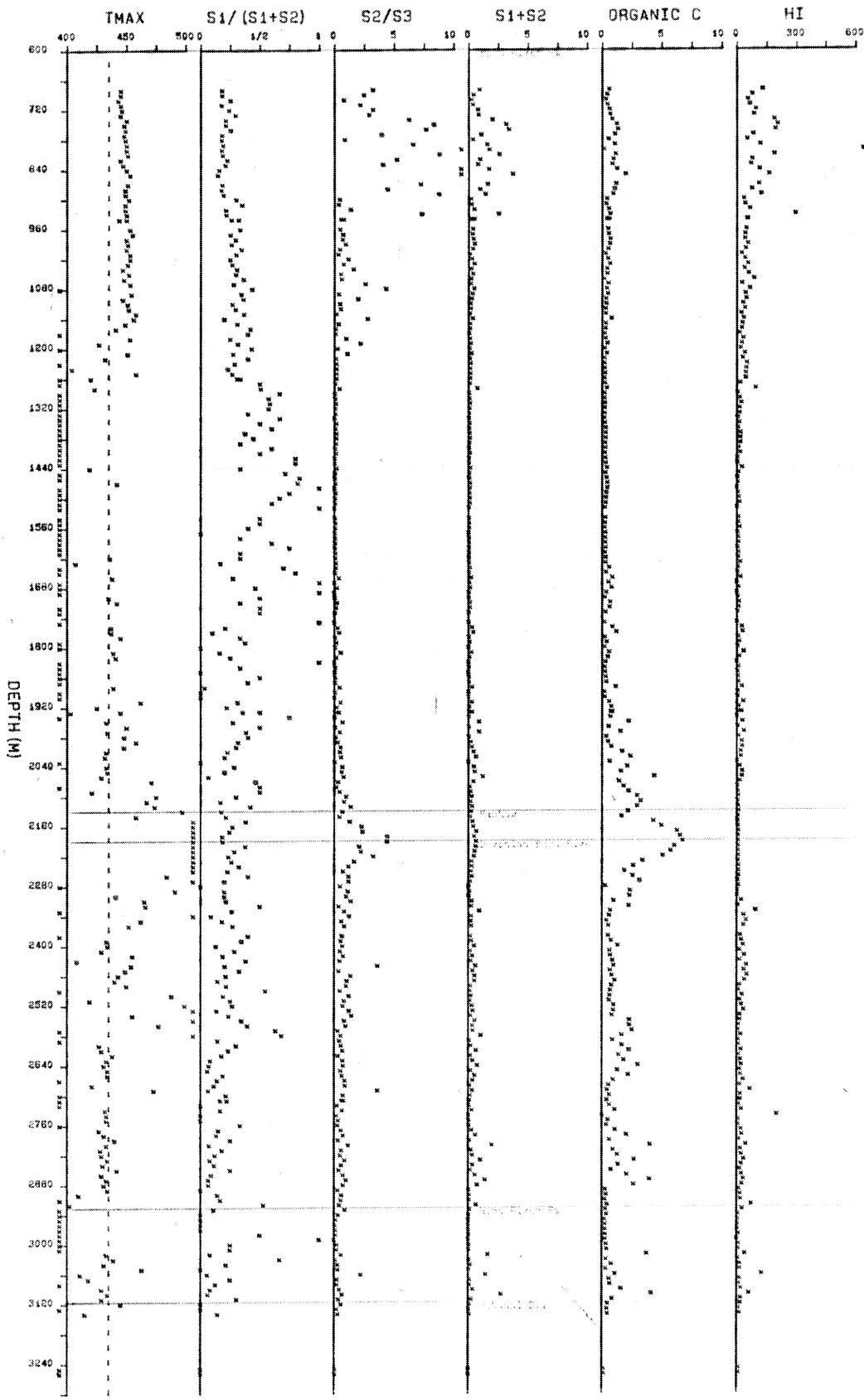
*

Conoco et al East Mackay I-55



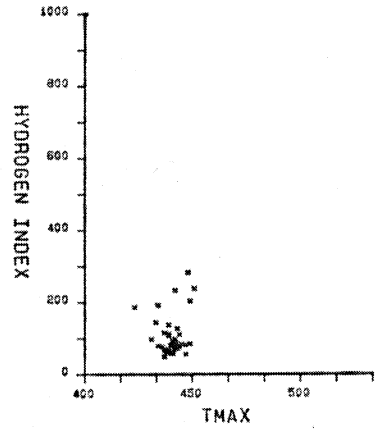
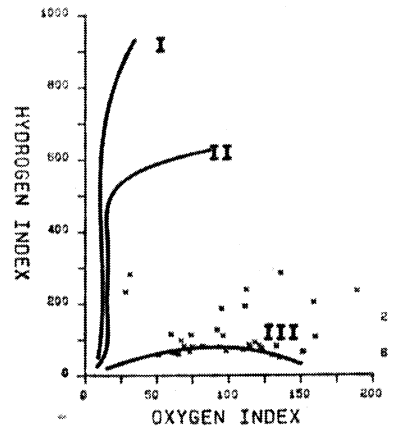
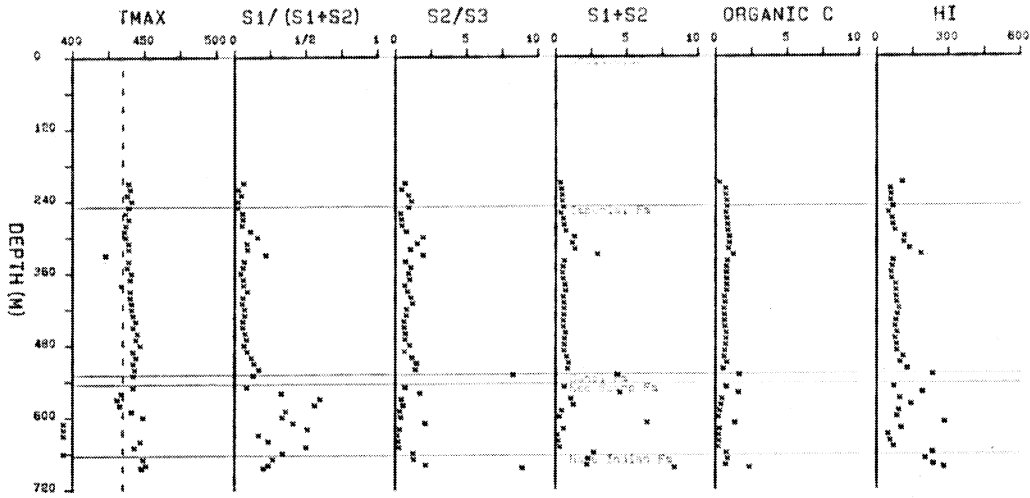
*

Northcor et al Liard F-25A



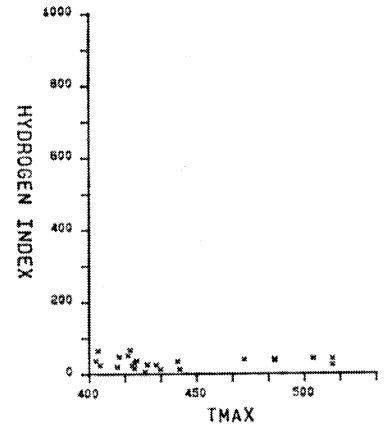
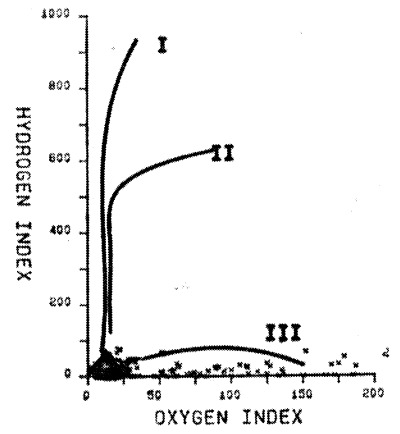
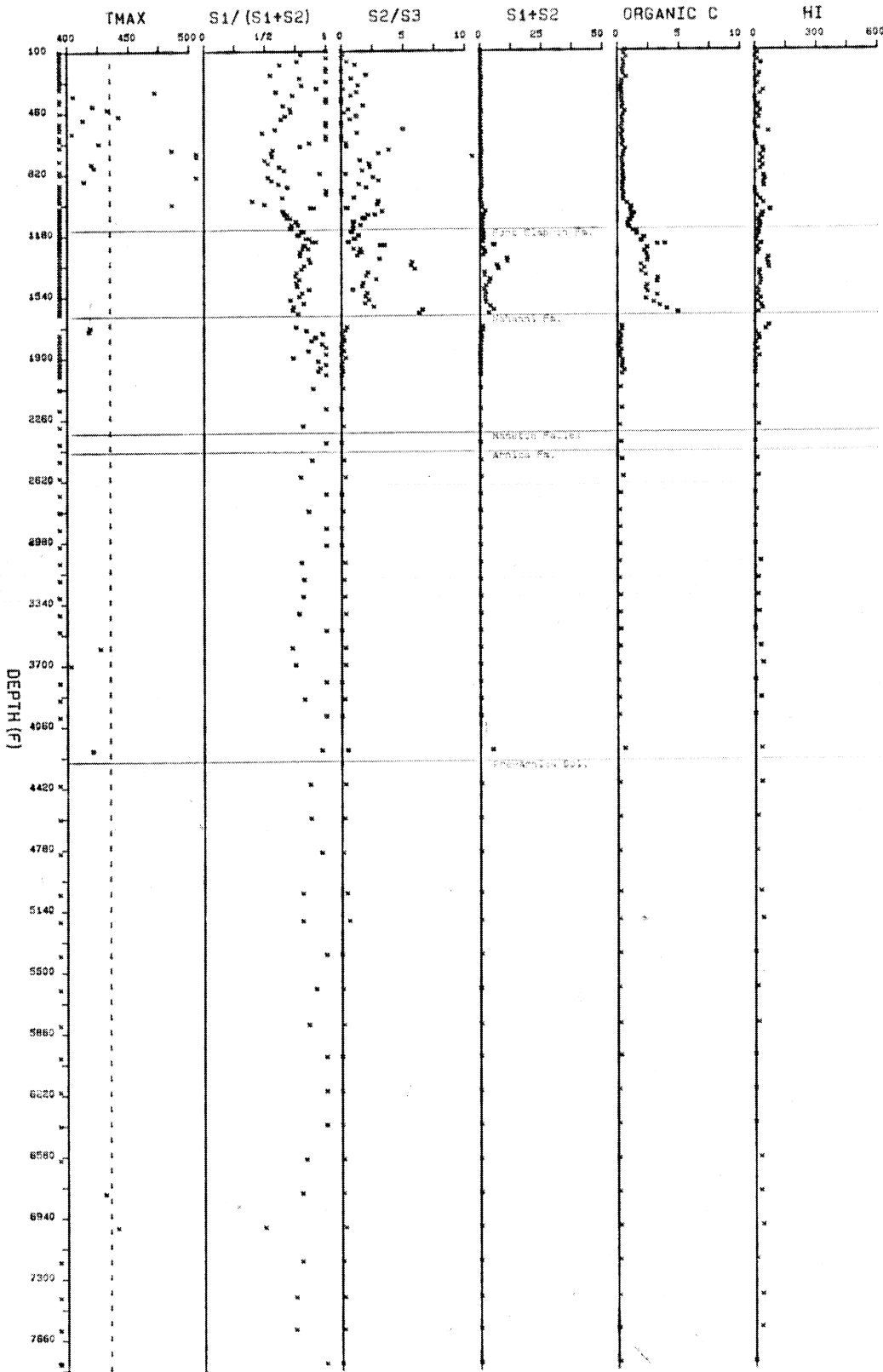


AT&S Texaco Maida Creek 0-65



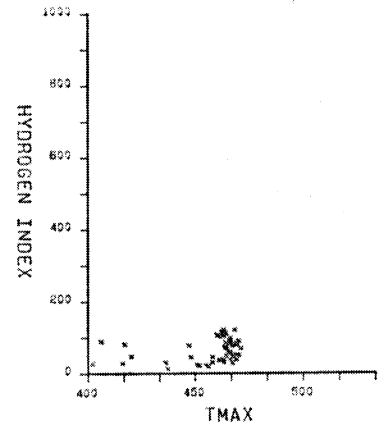
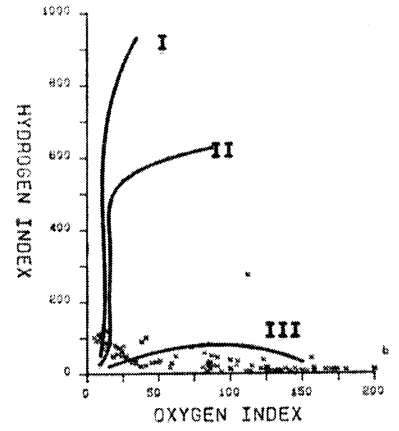
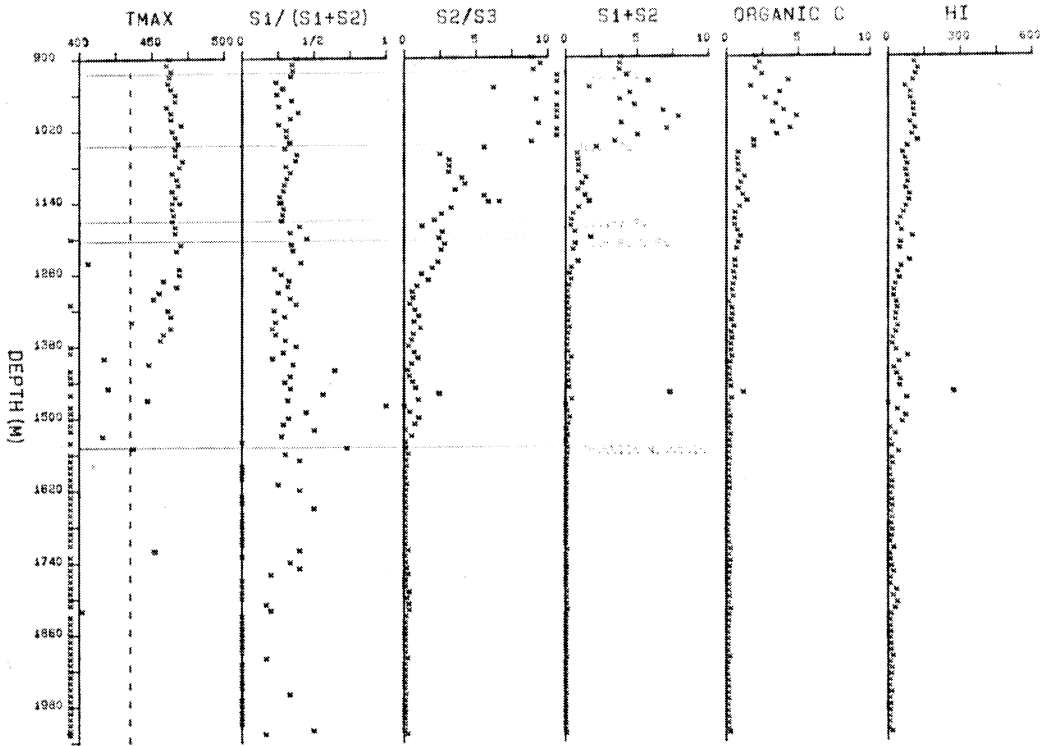
*

Pan Am A-1 Mattson #1 E-13



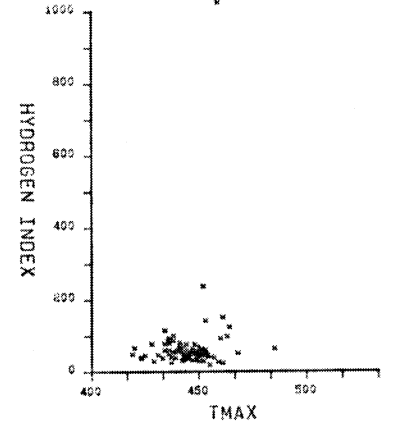
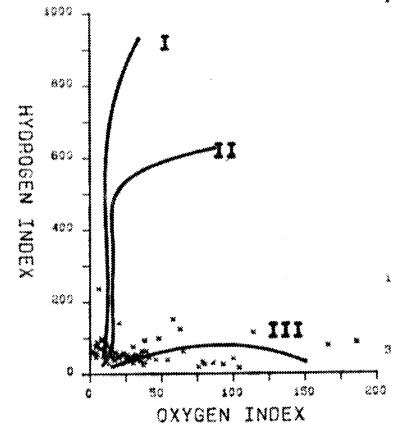
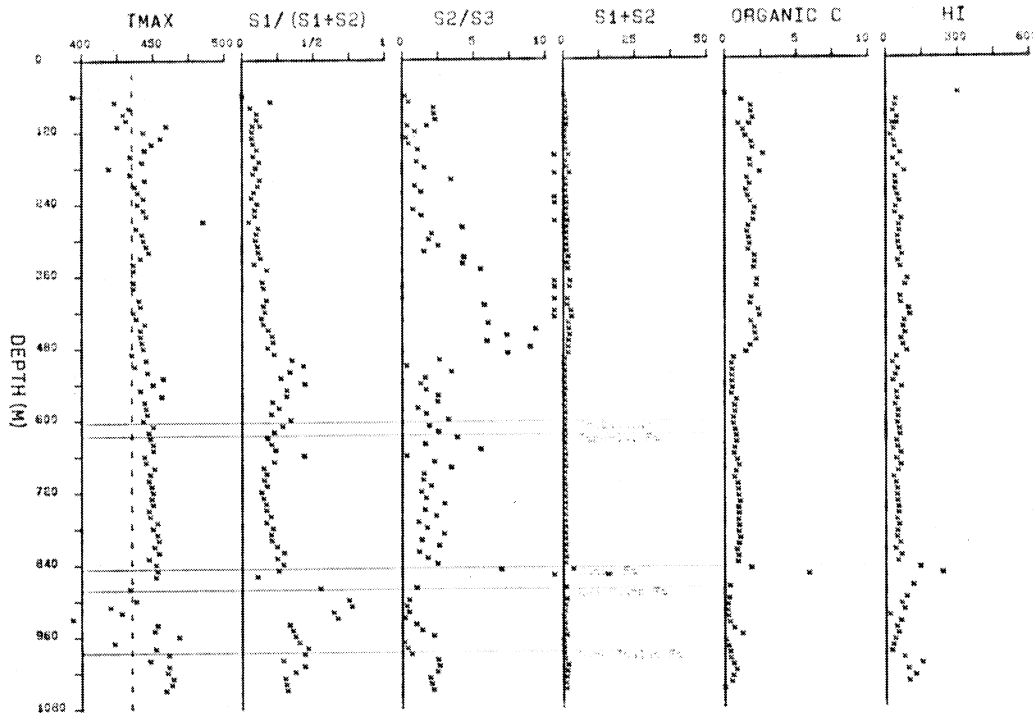


NSM Mirror Lake 0-33



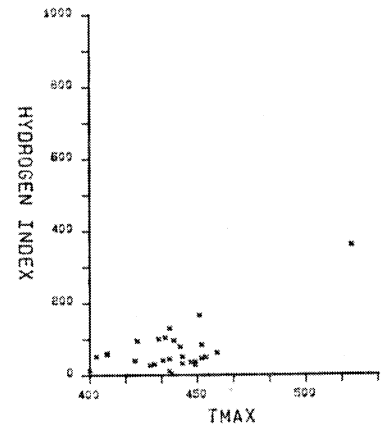
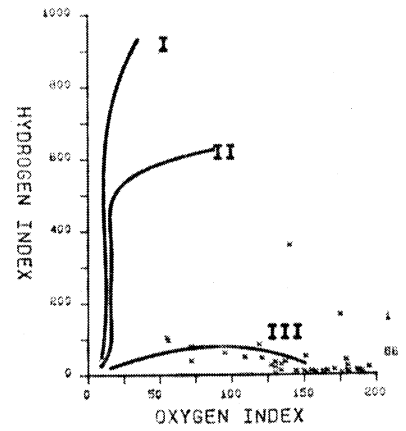
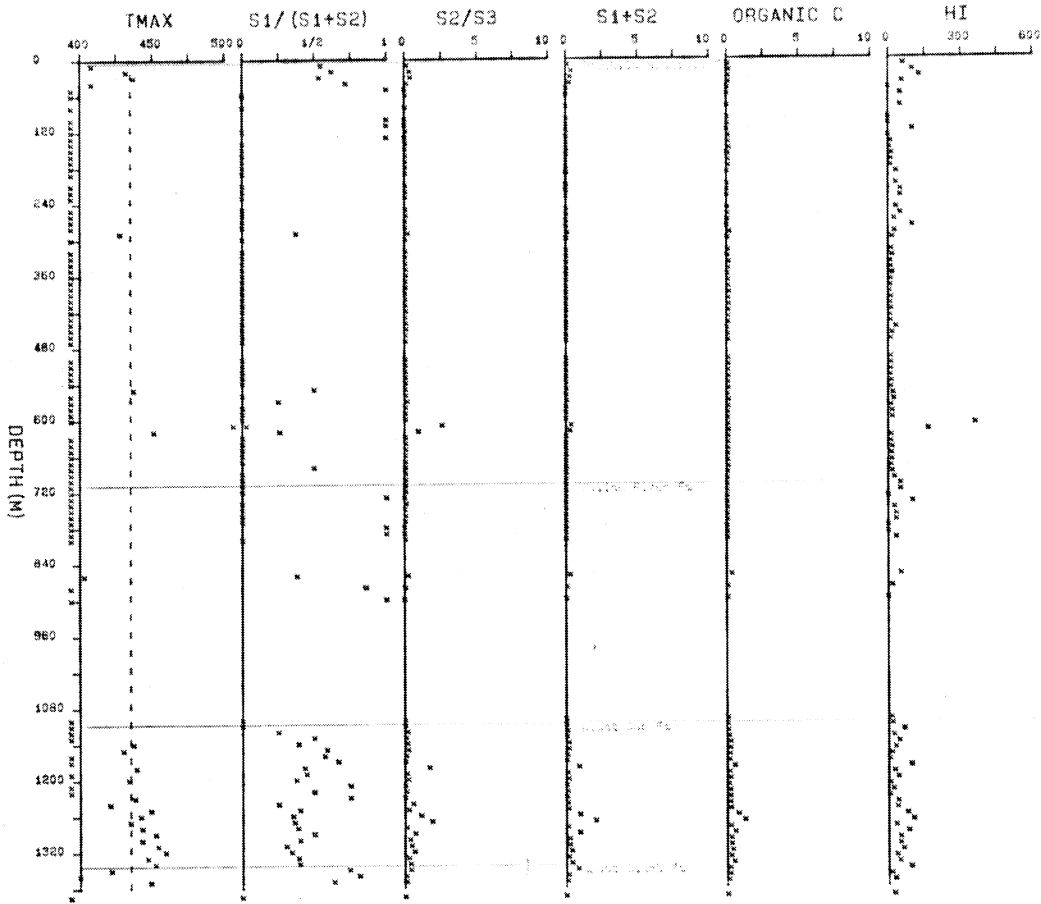
*

PCI et al Morrow Creek J-71



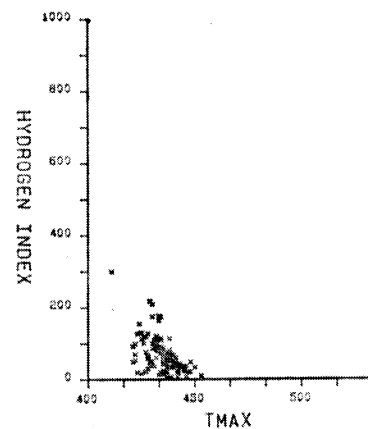
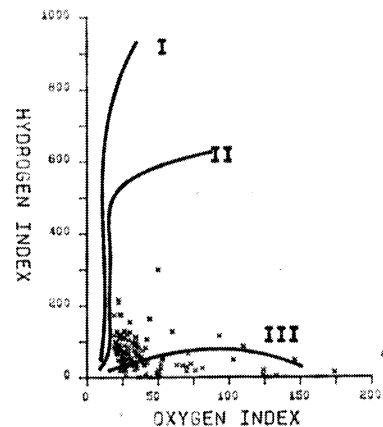
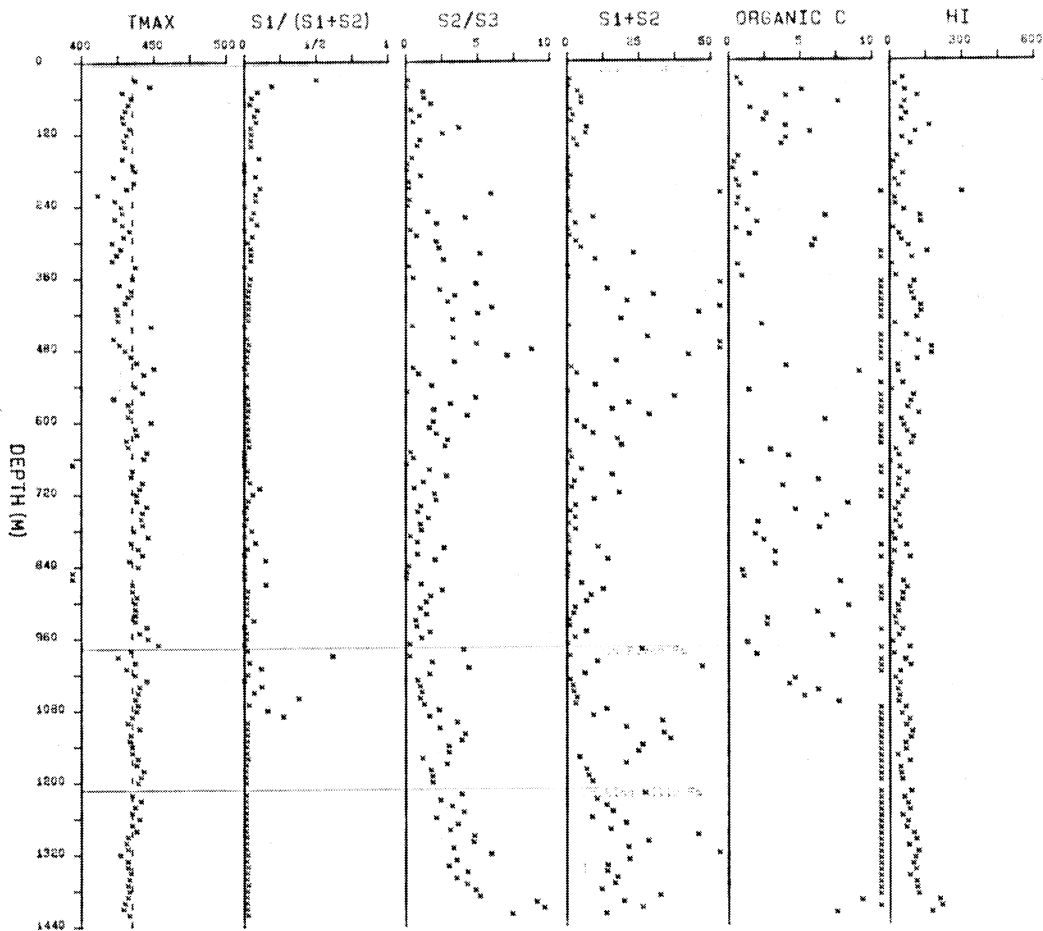
*

PCI Canterra Nogha 0-47



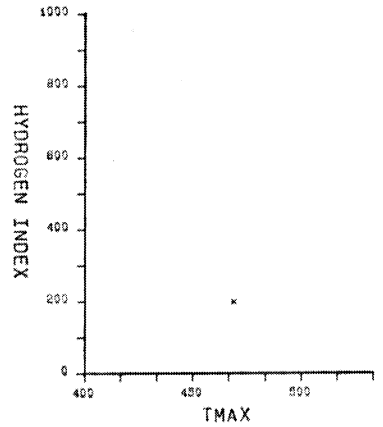
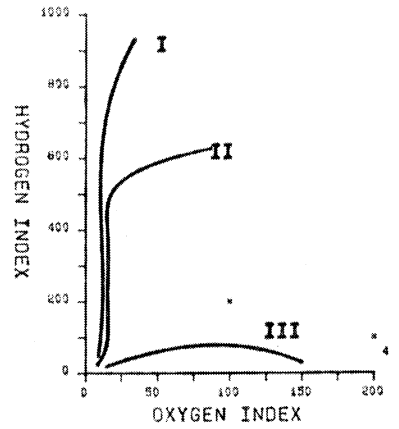
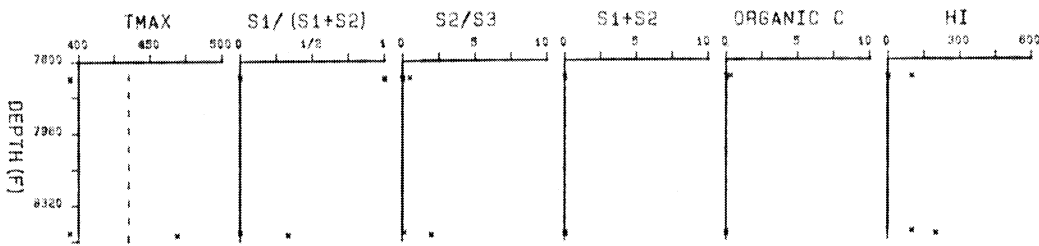
*

Gulf et al Onigat K-49



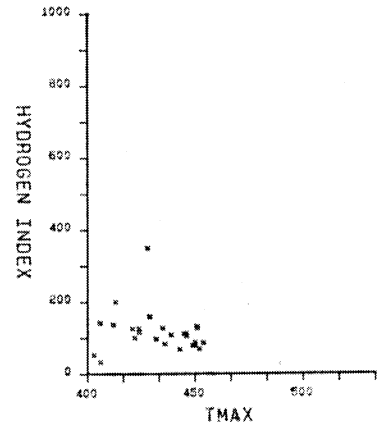
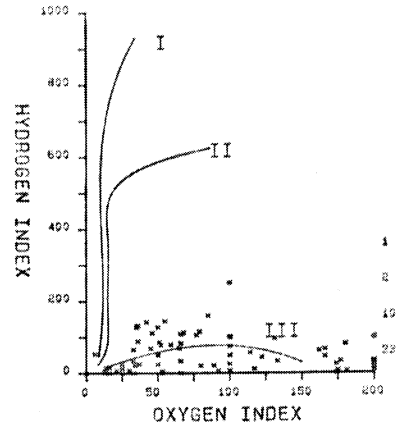
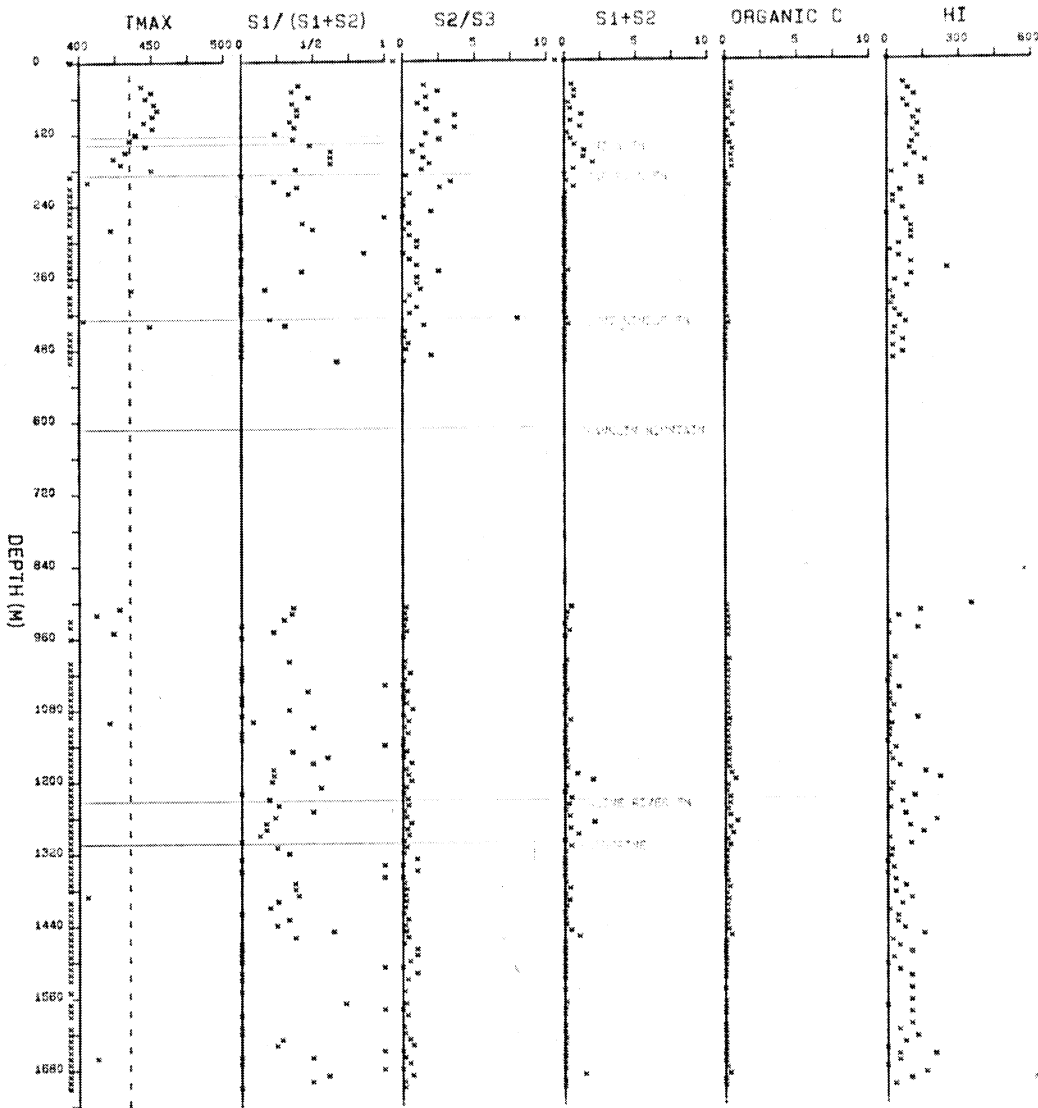


FPC Tenneco Root River I-60



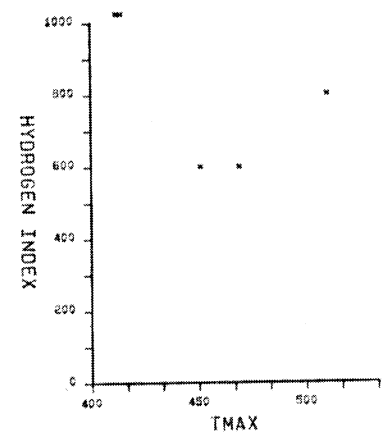
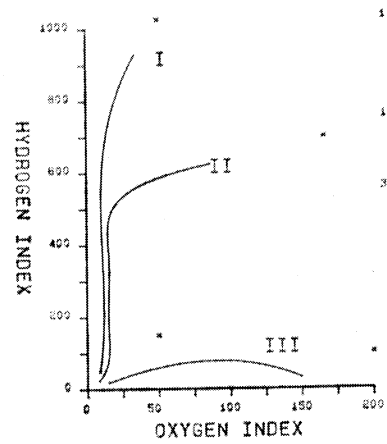
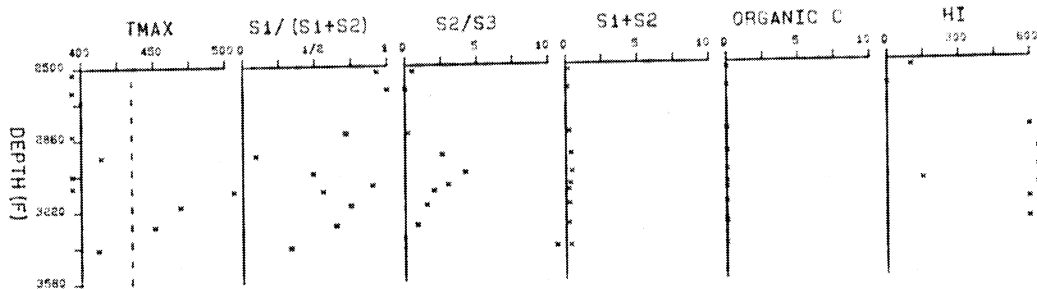
*

PCI Sammons H-55



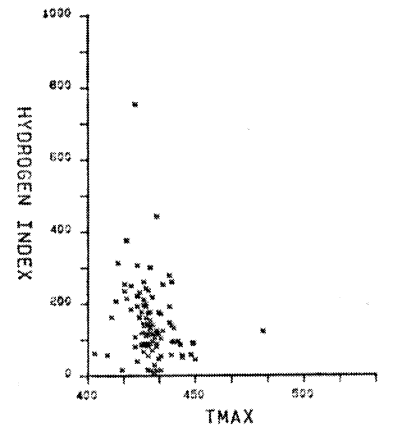
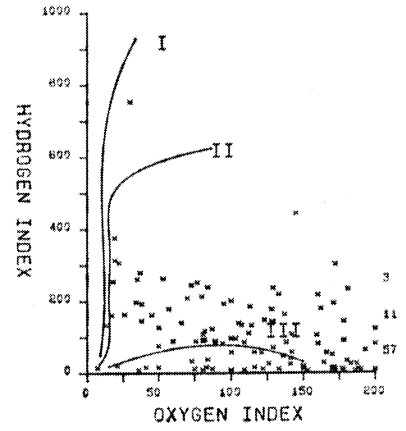
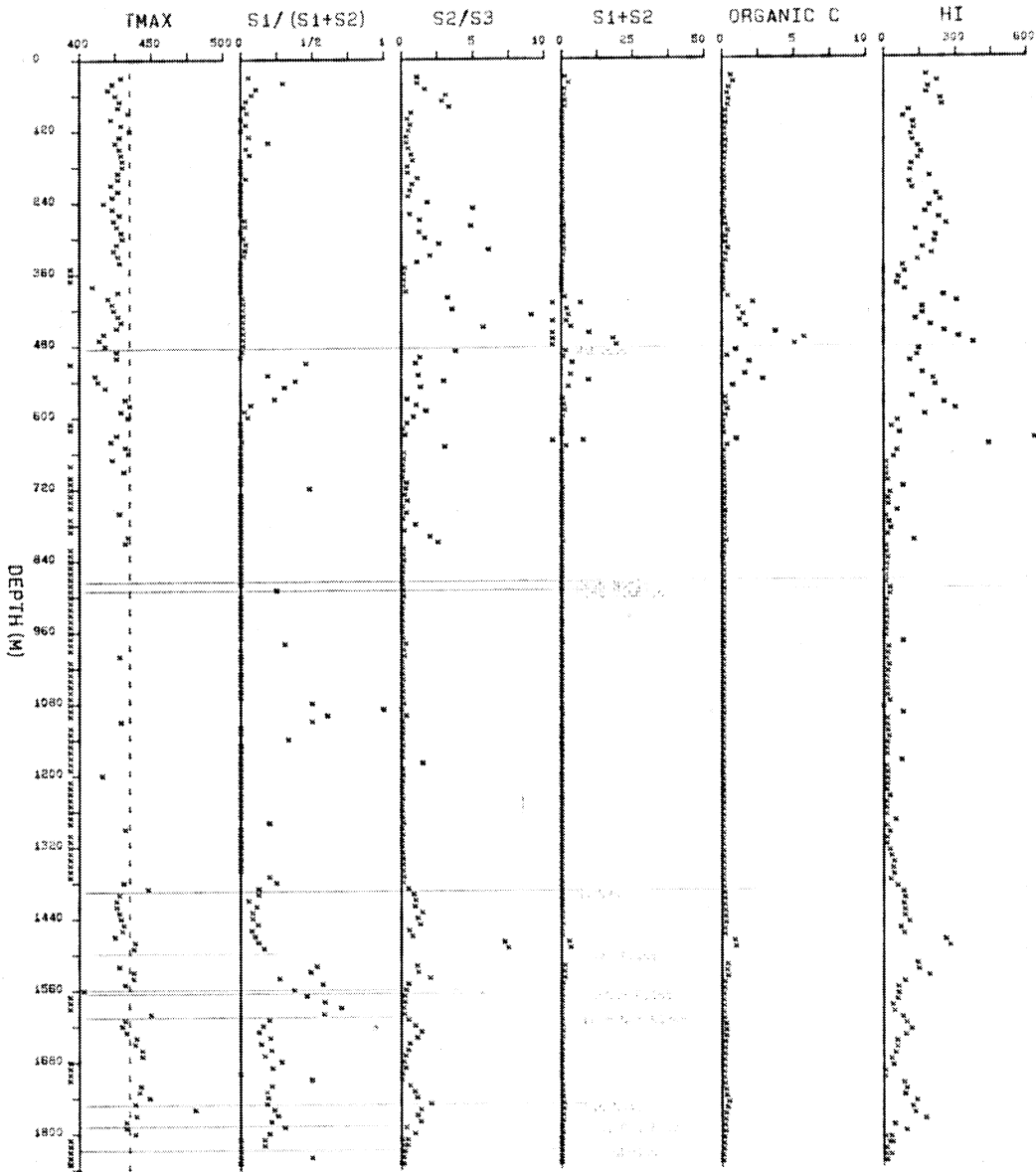
*

Scurre et al Sibbeston Lake G-24



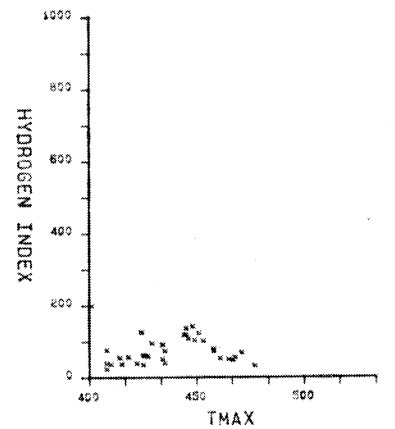
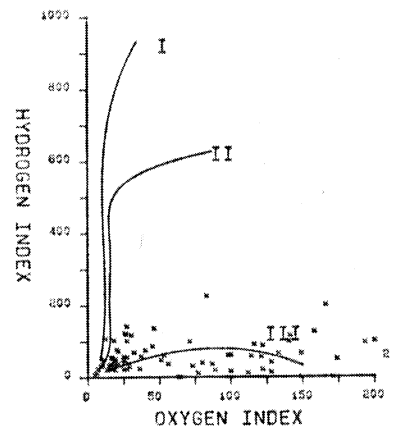
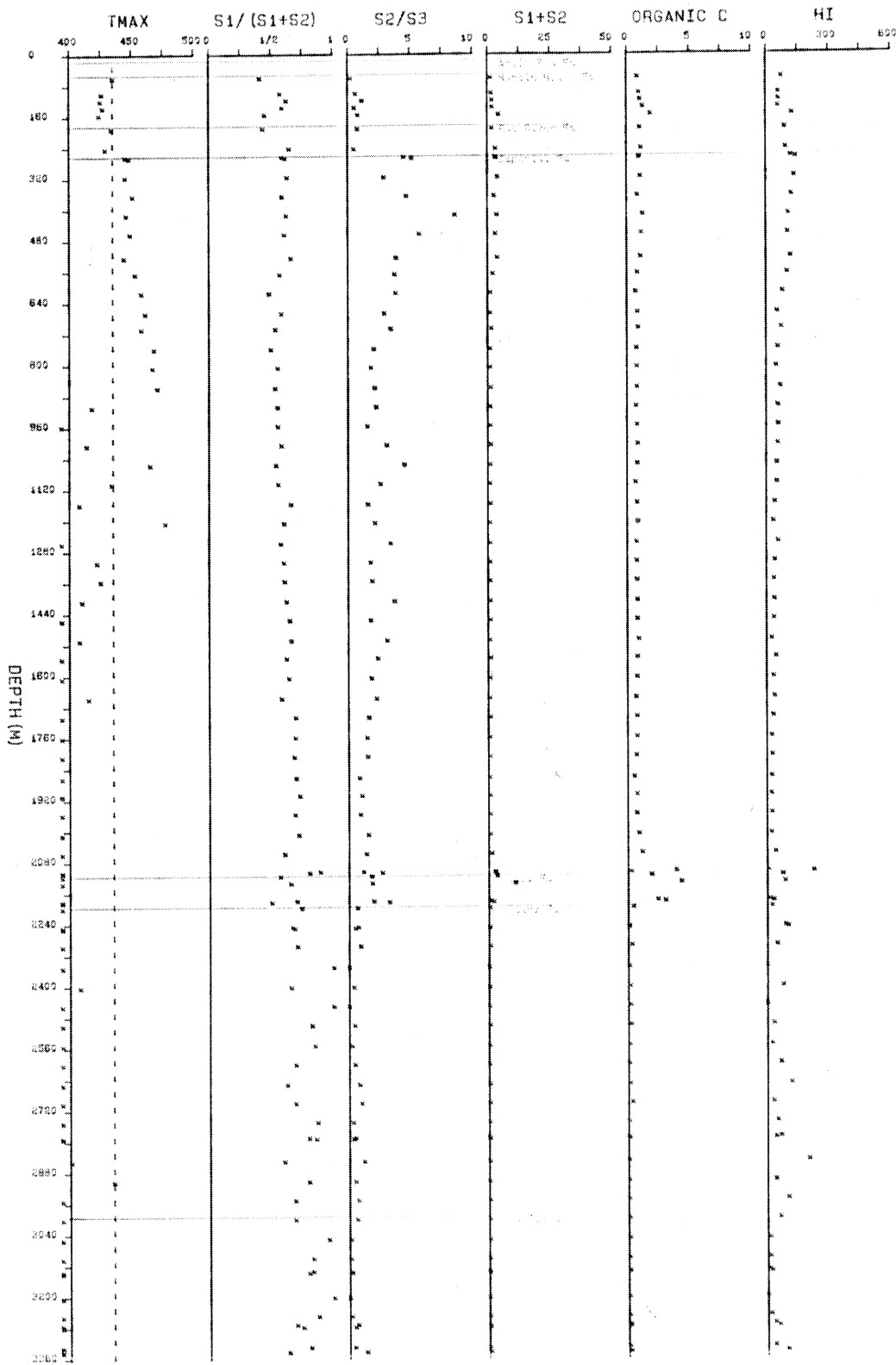
*

Home Silt Lake South G-21



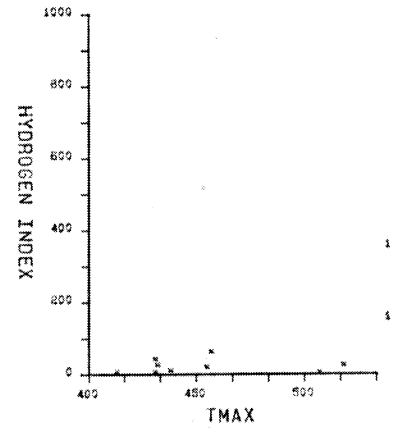
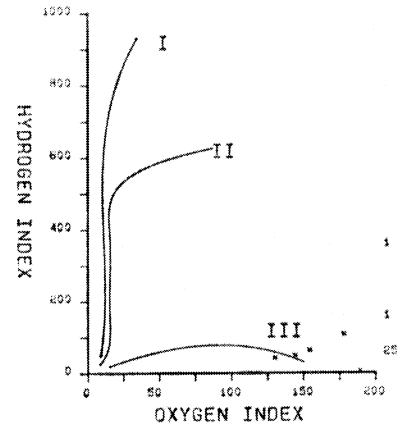
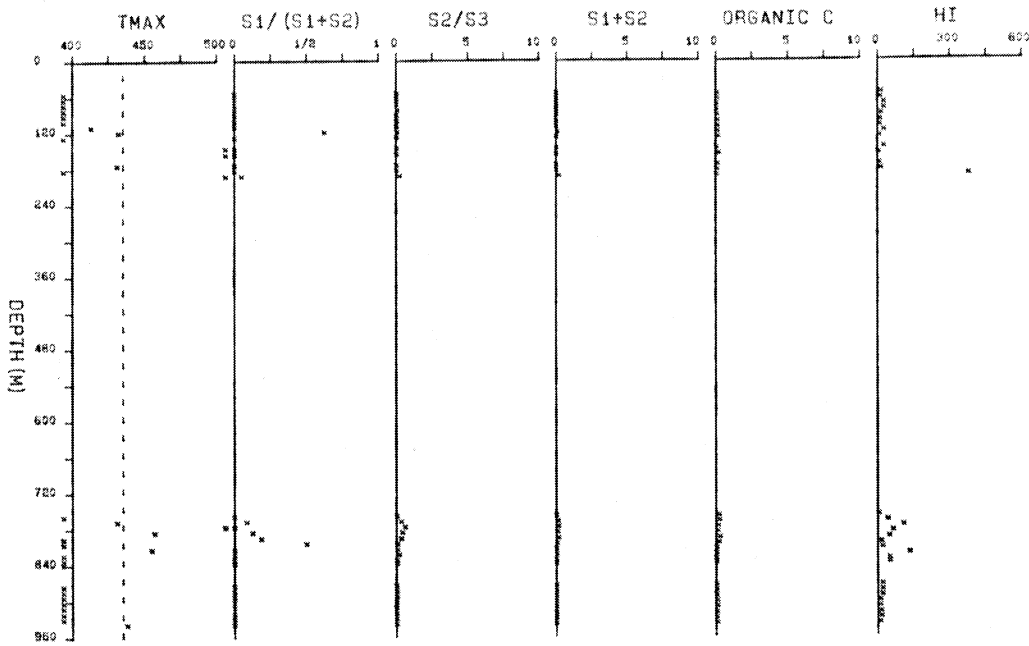
*

IOE Stony I-50



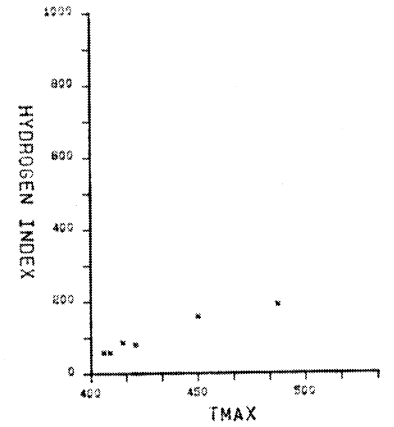
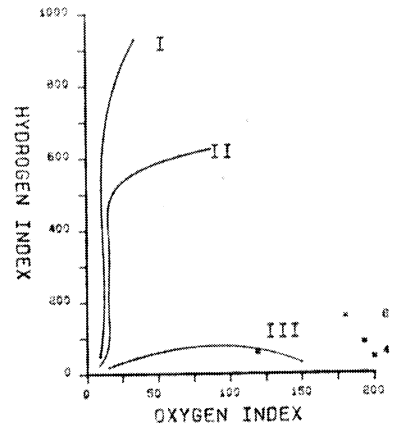
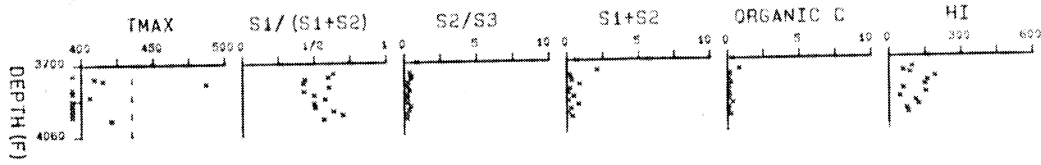


Union Imp Stopover K-44

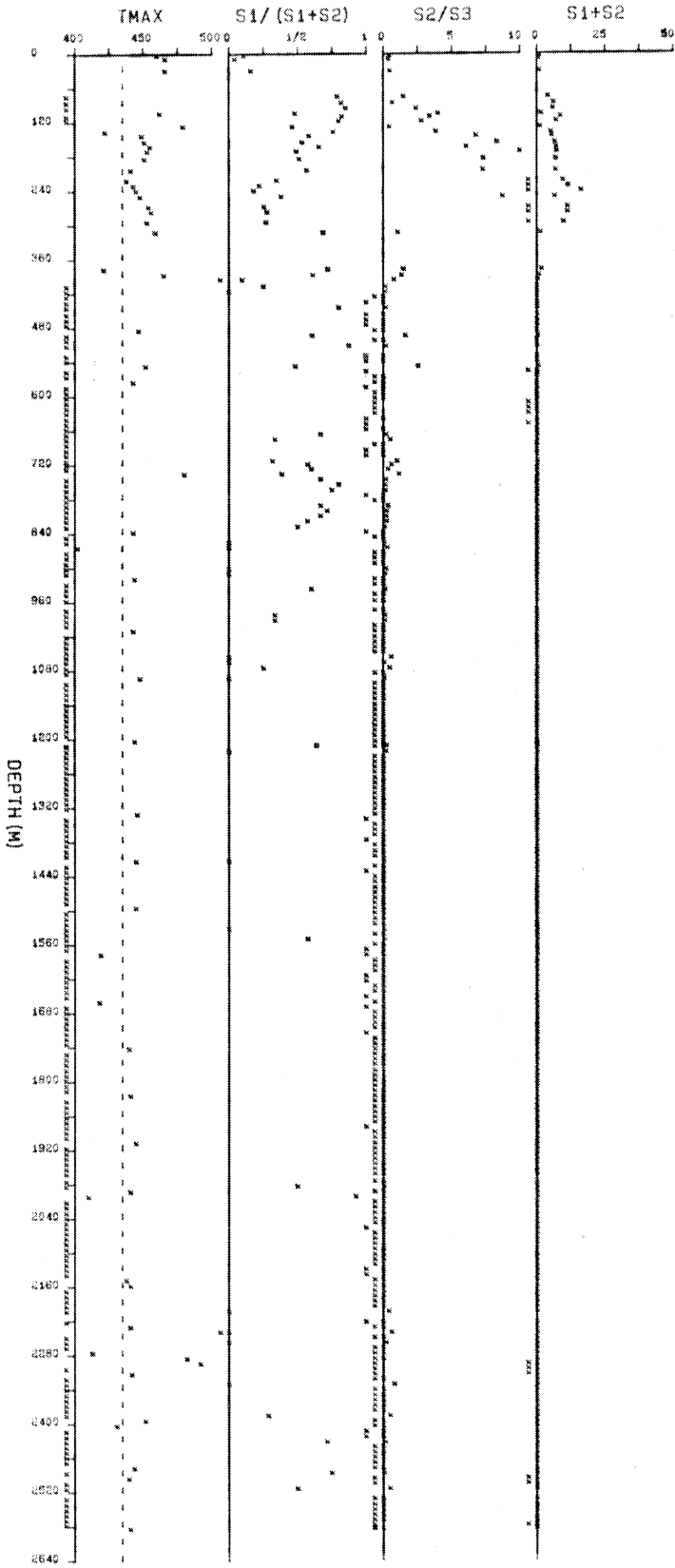


*

Ashland et al Tedji Lake K-24

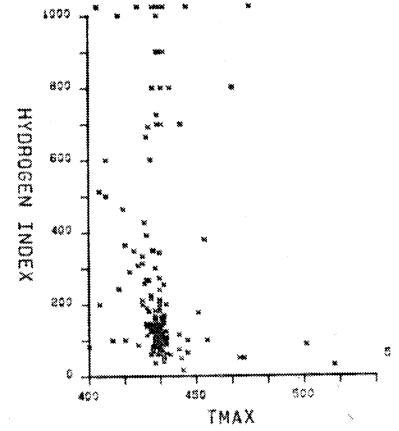
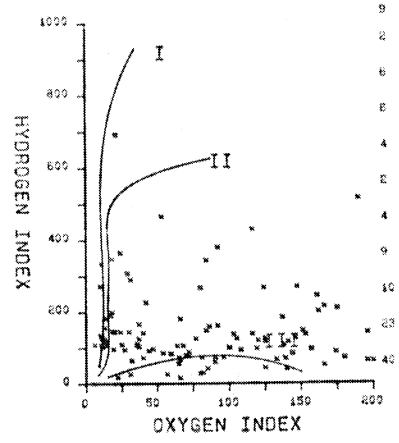
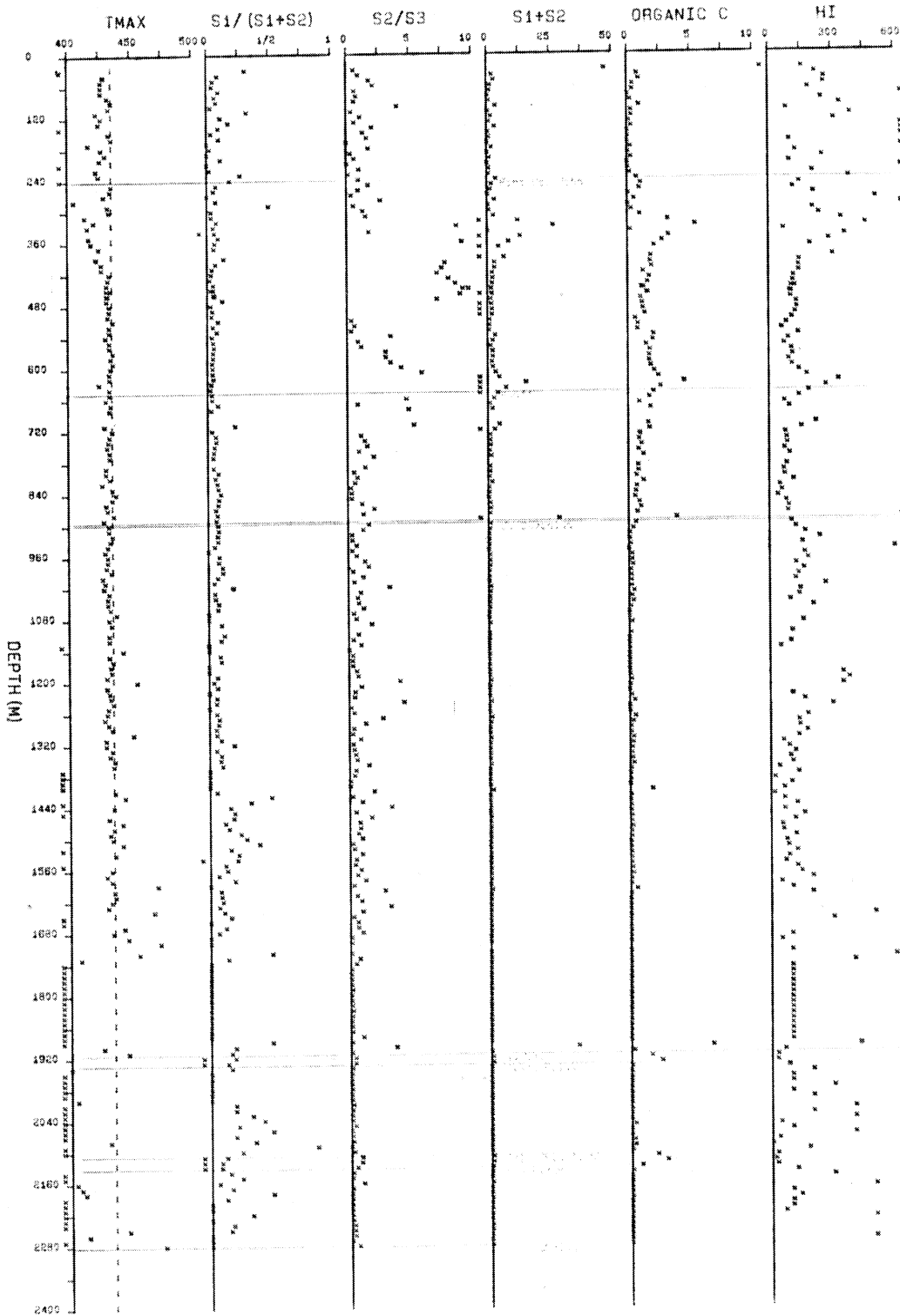


CDR Tenlen A-73



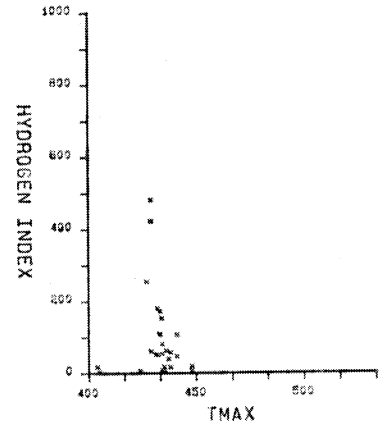
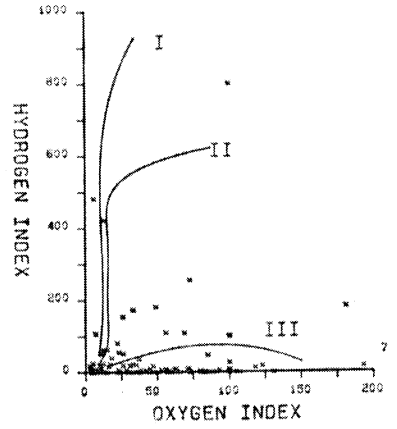
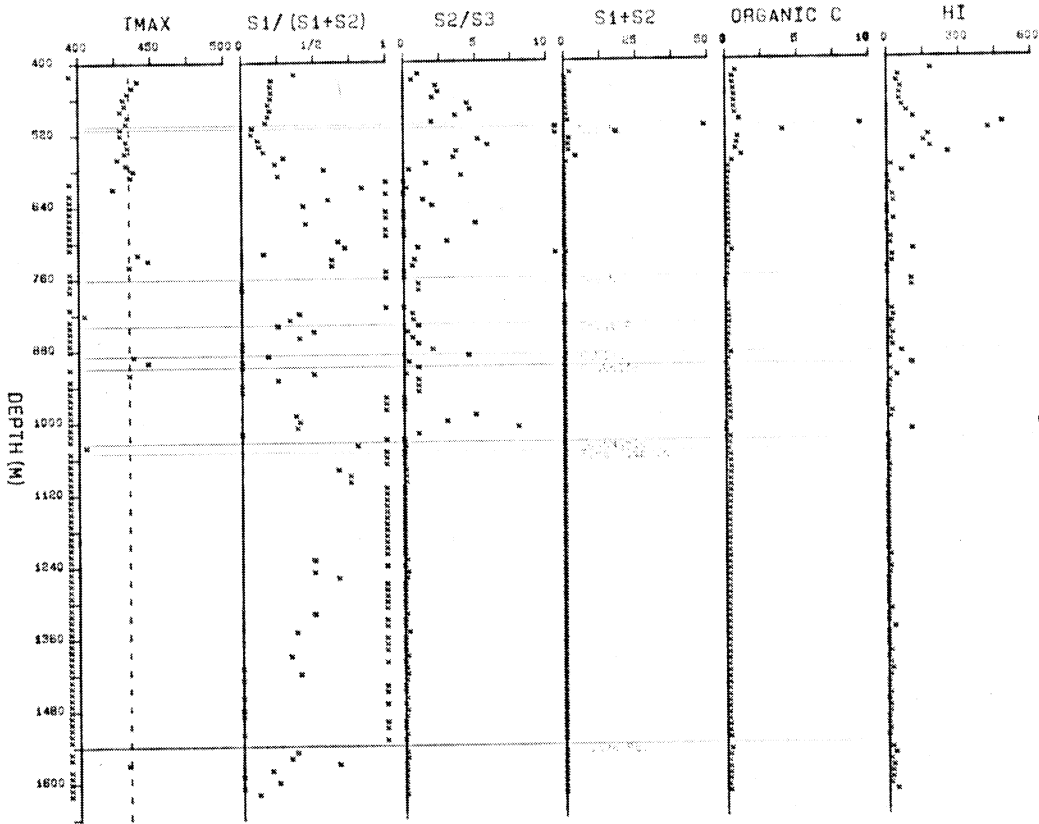
*

Northcor et al Trainer Lake N-25



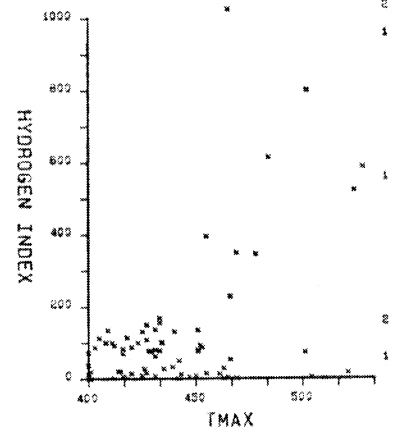
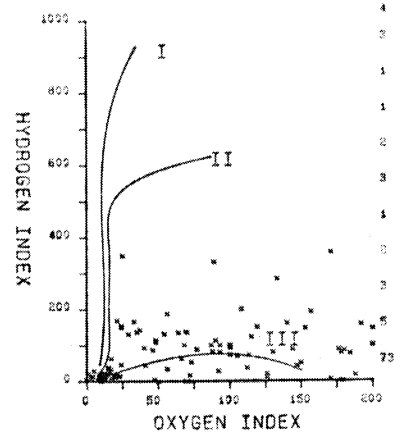
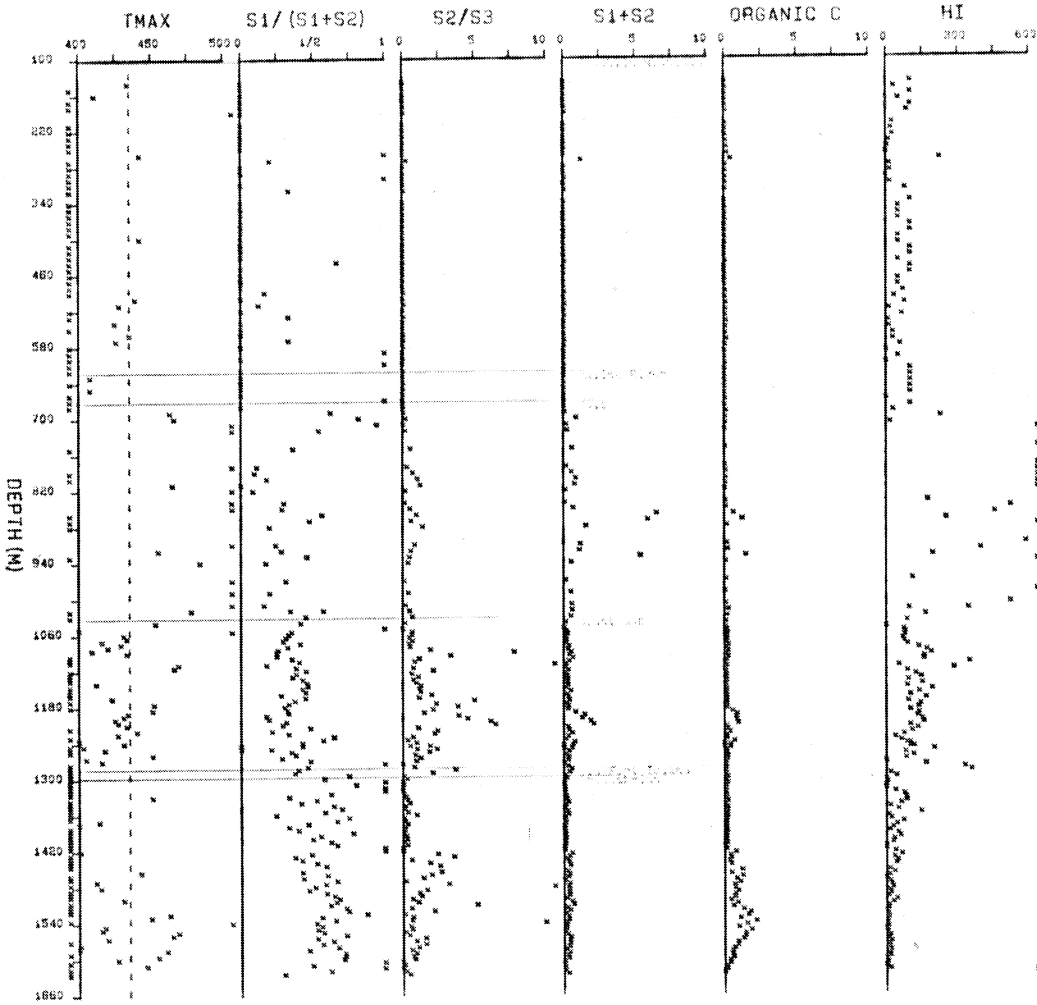
*

Sulpetro et al N Trout Lake F-08



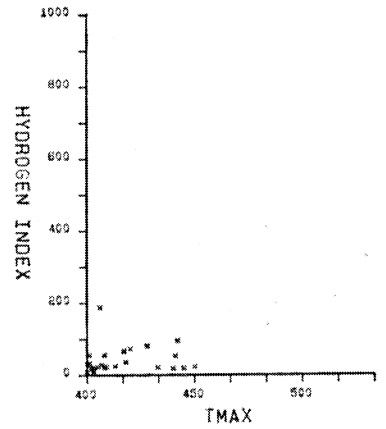
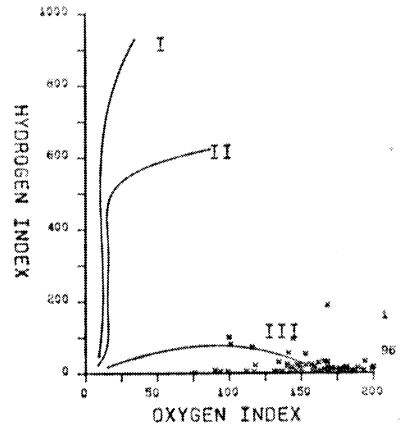
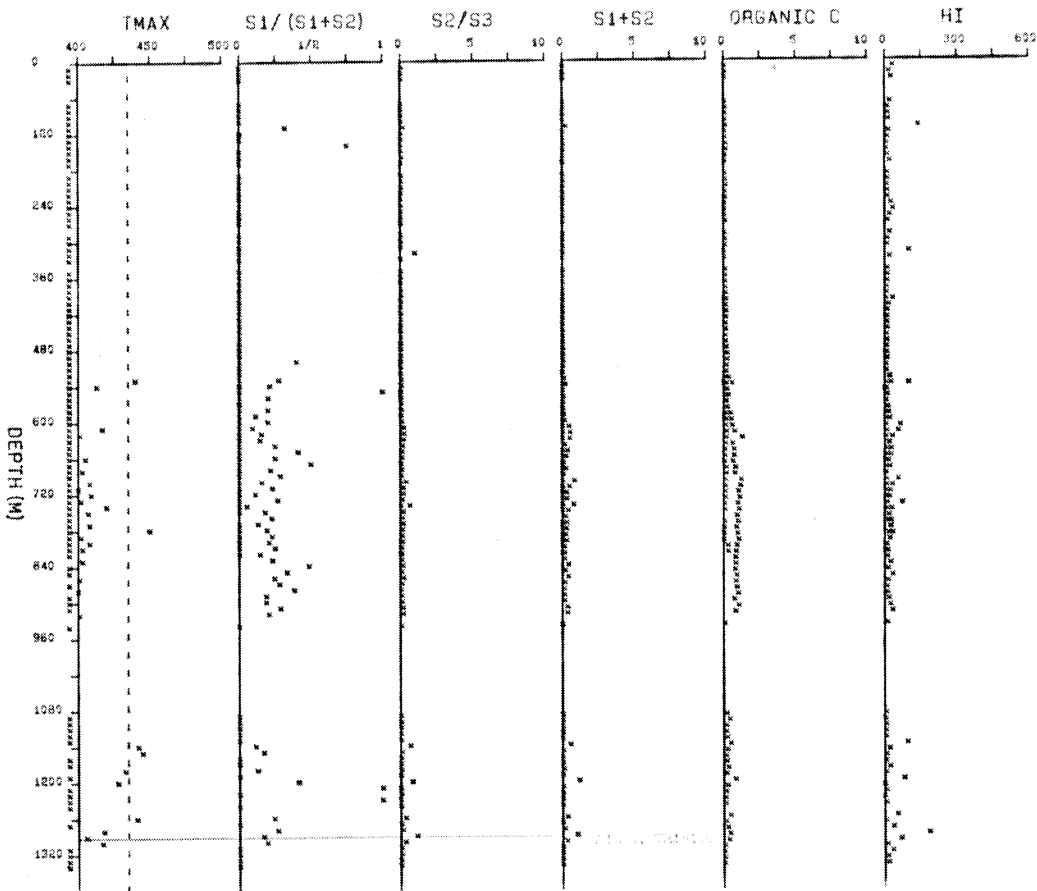
*

EXCO et al Tunago N-37



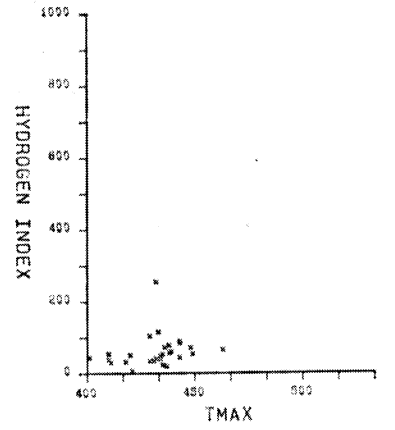
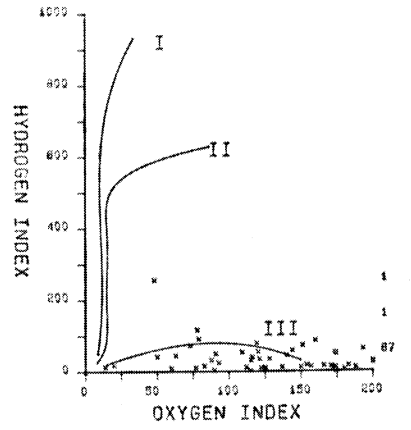
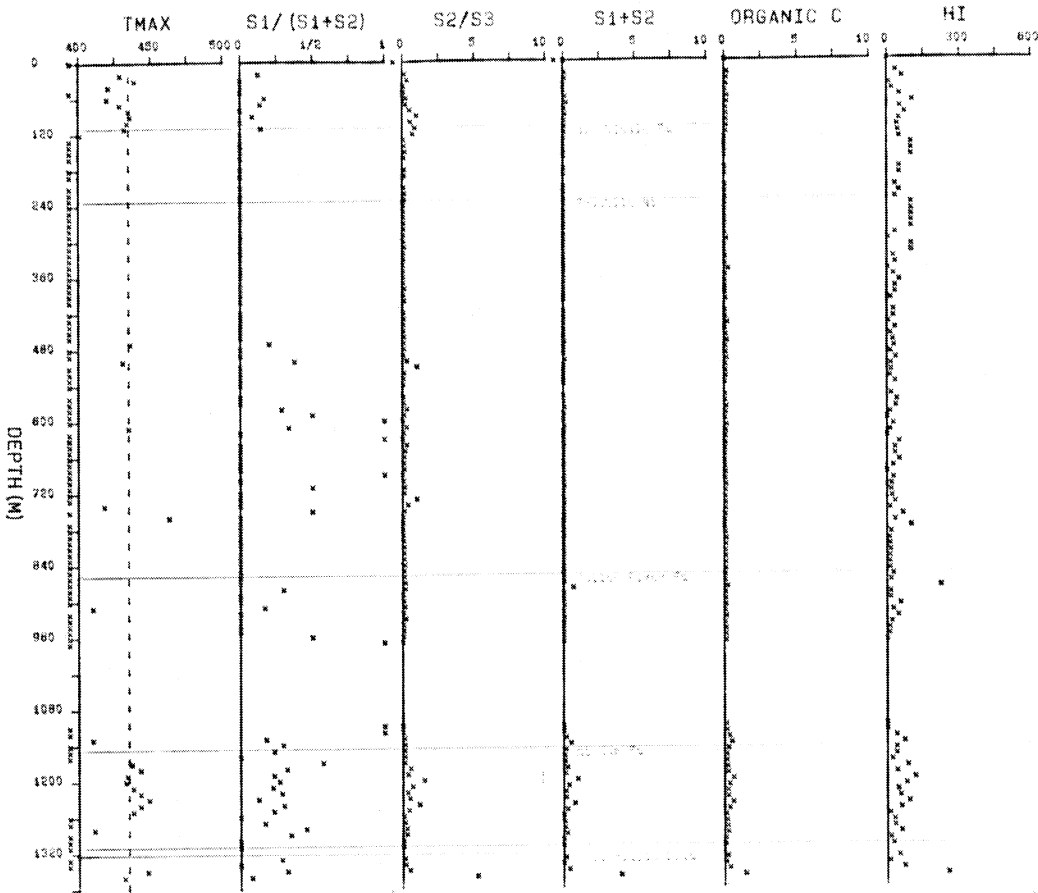
*

PCI Canterra Tweed Lake A-67



*

PCI Canterra Tweed Lake C-12



*

Husky HB et al Willow Lake H-10

