

This map has been reprinted from a scanned version of the original map. Reproduction par numérisation d'une carte sur papier.

FIGURE 2d

LINE FPG89-1MERGE  
S.P. 101 TO 857

I.S.P.G. 1989  
BEAUFORT SEA

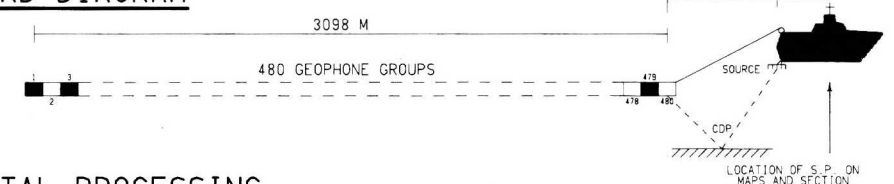


FINAL STACK

FIELD DATA

VESSEL: M/V E. O. KETTER  
 SHOT NO: 2812  
 DATE SHOT: SEPTEMBER 1989  
 DATA TIME: 01:00  
 RECORDING SYSTEM: FDS (TITAN 1000)  
 RECORDING FORMAT / DENSITY: REC. D - GROUP CODED / 4X20 B.P. 1.  
 SAMPLE PERIOD / RECORD LENGTH: 4 MS / 24.0 S  
 GAIN CONTROL: NONE  
 GAIN CONSTANT / FINAL GAIN: 12 / 84 DB  
 RECORDING FILTERS: LOW CUT: 4 HZ @ 18 DB/OCTAVE  
 HIGH CUT: 64 HZ @ 20 DB/OCTAVE  
 INCREASE IN PRESSURE ON HYDROPHONE PRODUCES REFLECTION ON THE FIELD TAPE MONITOR  
 TAPED THROUGH ARRAY: 4 STRINGS  
 1: 1900-2000 PSI / 7000 CU IN / 61.2 MS. DELAY  
 2: 12 M  
 3: 2248 M  
 4: 480 M  
 5: 0-28 DISK TYPE  
 6: 16 K. S. M.  
 7: 30 P. S. M.  
 8: 30 P. S. M.  
 9: 30 P. S. M.  
 NAVIGATION SYSTEM: HYDRA SYSTEM - CYLINDS  
 SECONDARY SYSTEM - ARGO

SPREAD DIAGRAM



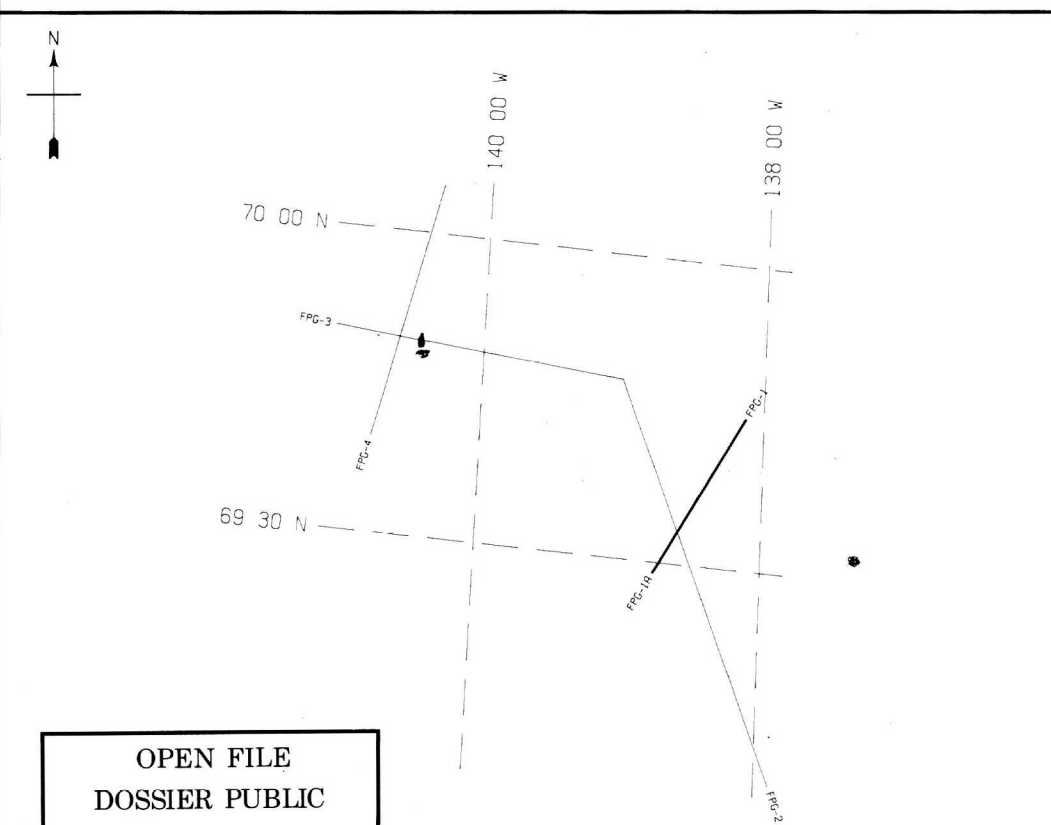
DIGITAL PROCESSING

DEMULIPLY: PROCESSED TO 24.0 S  
 ADJACENT TRACE SMASH: Muting of first break energy  
 PRE DECONVOLUTION MUTE: 0 DB/S APPLIED FROM 0 TO 0.5  
 TIME AMPLITUDE RESOLUTION: MAX. FREQ. = 61.25 HZ / DIP ZONE = 10 TO 4 MS/TR  
 VELOCITY FILTER (SHOT DOMAINS): 0.10  
 VELOCITY FILTER (RECEIVER DOMAINS): 0.10  
 VELOCITY ANALYSIS: 110 FOLDS  
 NORMAL MORTON CORRECTIONS: ANALYSED AT 1.5 KM INTERVALS FOR STACK  
 COMMON DEPTH SORTED STACK: SEE STACK SECTION HEADER FOR VELOCITIES  
 TIME/SPEACE VARIANT FILTER: TIME/SPEACE VARIANT FILTER / 30 FOLD  
 TIME/SPEACE VARIANT SCALING: 0.8715 24  
 TIME/SPEACE VARIANT SCALING: WATER BOTTOM REFERENCED  
 TIME/SPEACE VARIANT SCALING: DATE LENGTH = 100 MS  
 DISPLAY SCALE: DATE = WATER BOTTOM  
 EVERY 4TH TRACE PLOTTED

DISPLAY

HORIZONTAL SCALE: 20.000 TR/CM 20.000 TR/CM  
 VERTICAL SCALE: 1.00 CM/SEC  
 POLARITY: NORMAL 30 PERCENT  
 TRACE TIME: 8145  
 DATUM: SEA LEVEL  
 DISPLAY UNIT: 0.489808 CM

DISPLAY GAIN	
100	100
100	100
100	100



OPEN FILE  
DOSSIER PUBLIC  
**2396**  
GEOLOGICAL SURVEY  
COMMISSION GEOLOGIQUE  
OTTAWA

BEAUFORT SEA 1989

17 MAY 1990  
15:48:34

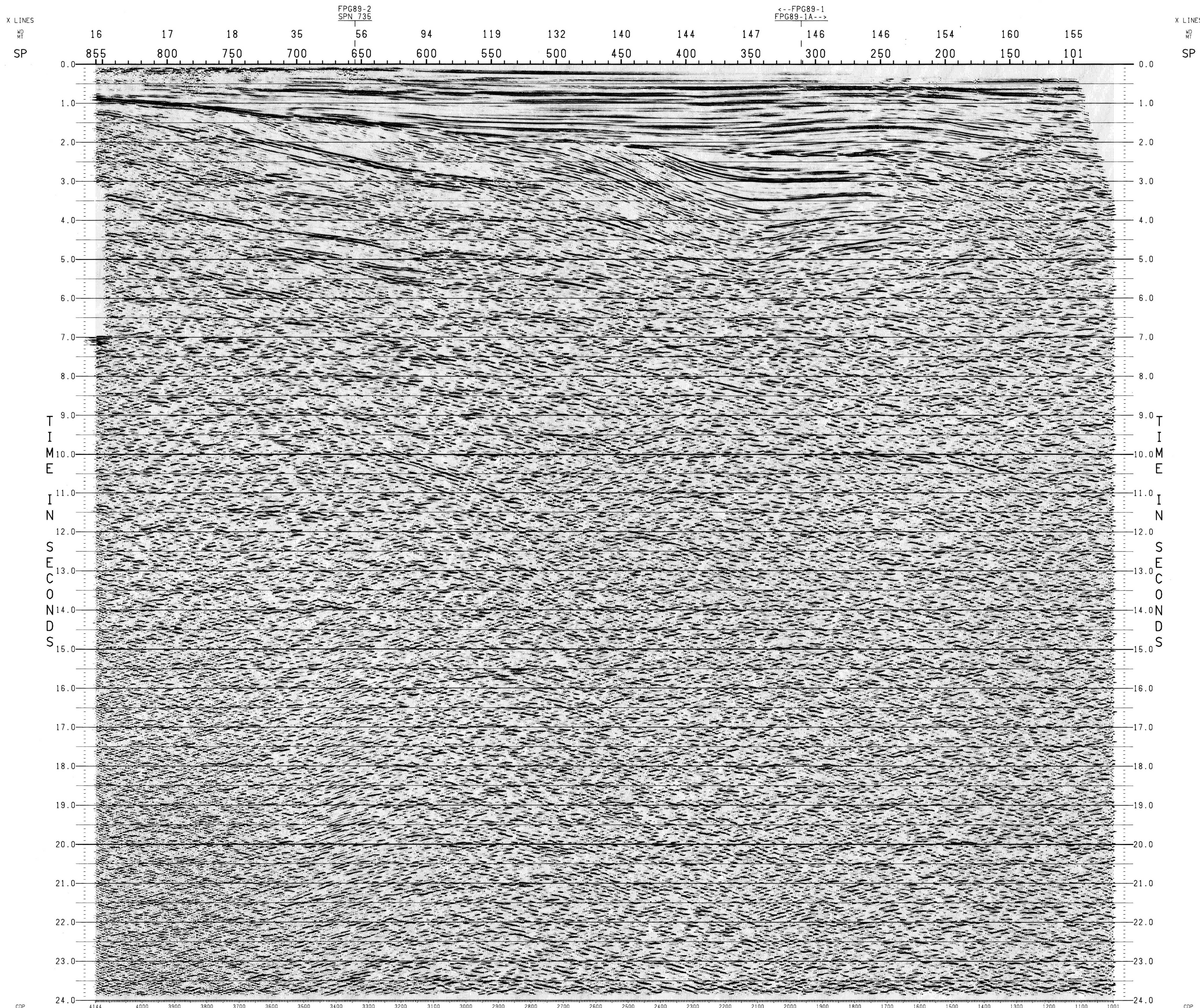


8402/130352

HALLIBURTON GEOPHYSICAL SERVICES, INC.

PROCESSING CHECKED BY: [Signature]

CP	LINE	TIME	DEPTH	...
16	855	0.0	0.0	...
17	800	0.0	0.0	...
18	750	0.0	0.0	...
35	700	0.0	0.0	...
56	650	0.0	0.0	...
94	600	0.0	0.0	...
119	550	0.0	0.0	...
132	500	0.0	0.0	...
140	450	0.0	0.0	...
144	400	0.0	0.0	...
147	350	0.0	0.0	...
146	300	0.0	0.0	...
146	250	0.0	0.0	...
154	200	0.0	0.0	...
160	150	0.0	0.0	...
155	101	0.0	0.0	...



FINAL STACK

LINE FPG89-1MERGE  
S.P. 101 TO 857

I.S.P.G. 1989  
BEAUFORT SEA

FINAL STACK

LINE FPG89-1MERGE  
S.P. 101 TO 857

I.S.P.G. 1989  
BEAUFORT SEA