



Produced by the Canada Centre for Mapping and Information... DEPARTMENT OF ENERGY, MINES AND RESOURCES

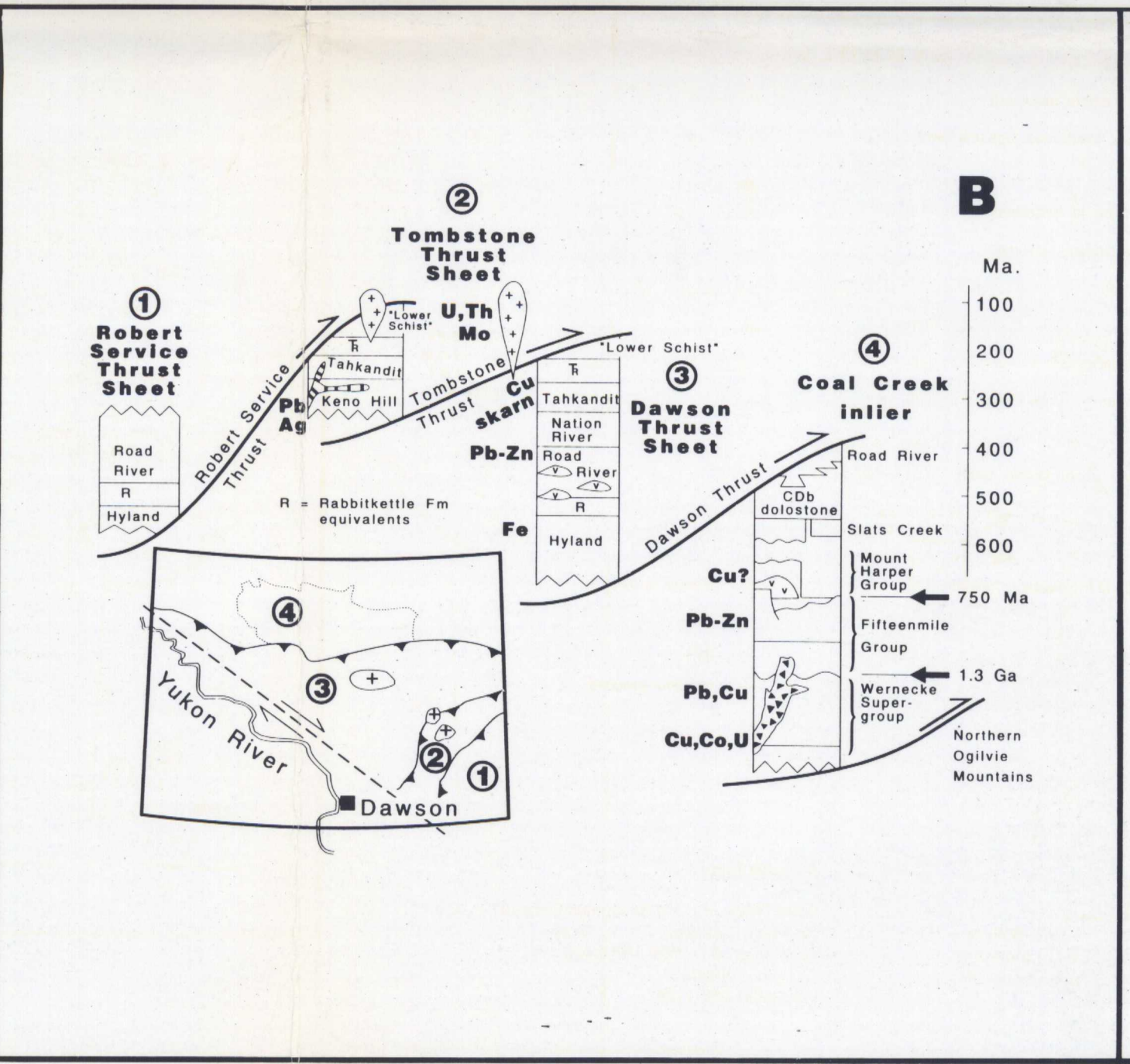
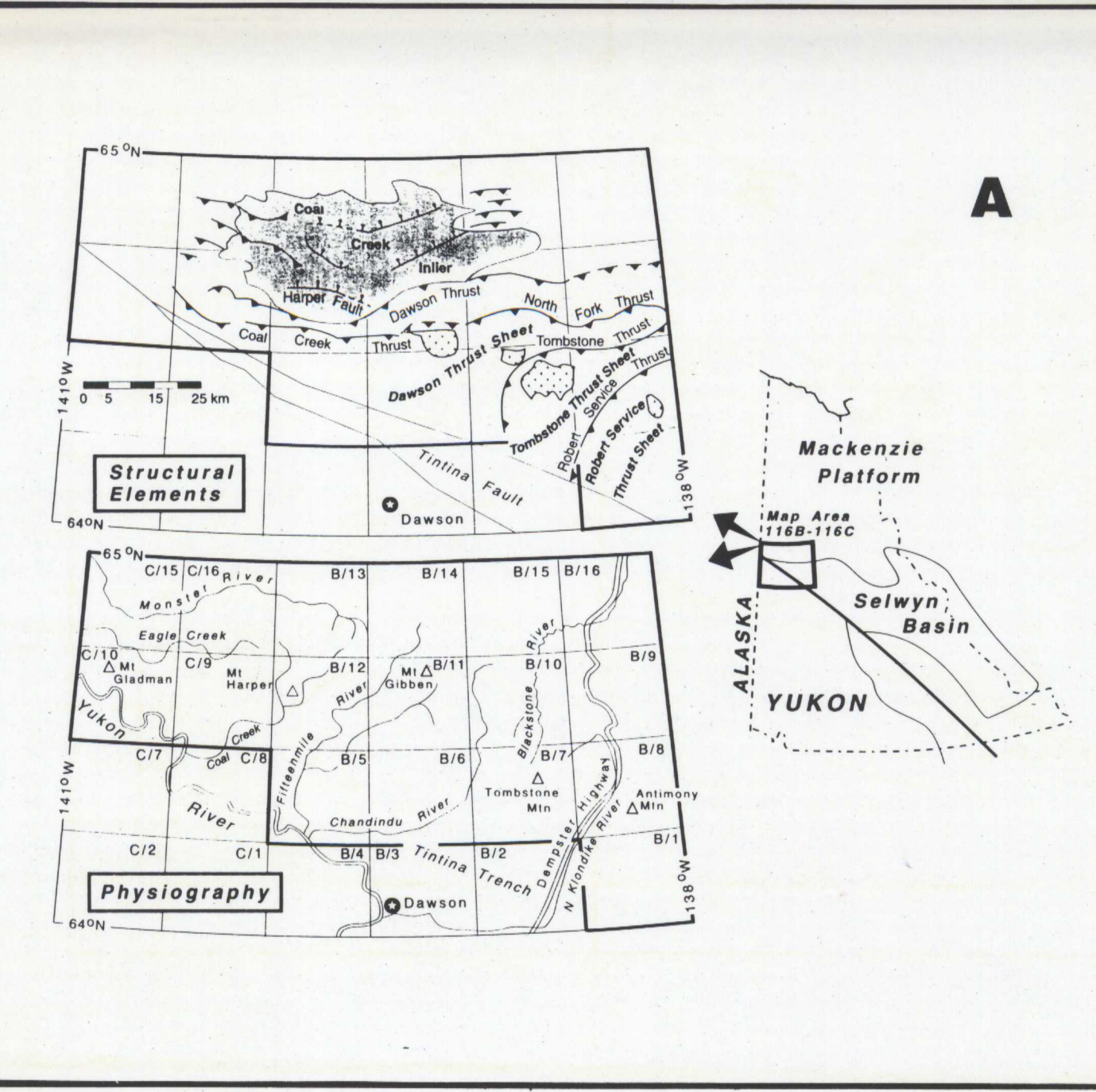
DAWSON YUKON TERRITORY TERRITOIRE DU YUKON

Scale 1:250 000 Échelle 1:250 000

CONVERSION SCALE FOR ELEVATIONS... ÉCHELLE DE CONVERSION DES ALTITUDES

LEGEND

- PALEOZOIC and MESOZOIC undivided
CRETACEOUS
JURASSIC
TRIASSIC
PALEOZOIC PERMIAN
UPPER PERMIAN
LOWER PERMIAN
UPPER CARBONIFEROUS
LOWER CARBONIFEROUS
UPPER DEVONIAN TO LOWER CARBONIFEROUS
UPPER DEVONIAN
MIDDLE ORDOVICIAN TO MIDDLE DEVONIAN
CAMBRIAN TO MIDDLE ORDOVICIAN
LOWER CAMBRIAN AND LOWER ORDOVICIAN
LOWER CAMBRIAN
UPPER PROTEROZOIC AND LOWER CAMBRIAN
HYLAND GROUP
QUARTZ GROUP
FAIRCHILD GROUP



MINERAL OCCURRENCES table listing various mineral deposits and their locations across different map areas.

SYMBOLS section defining geological symbols for boundaries, bedding, faults, and mineral occurrences.

ACKNOWLEDGMENTS section and title block for the Geological Compilation (1:250 000) of Dawson Map Area (116B,C) northeast of Tintina Trench.

This map has been produced from a scanned version of the original map. Reproduction par numérisation d'une carte sur papier.