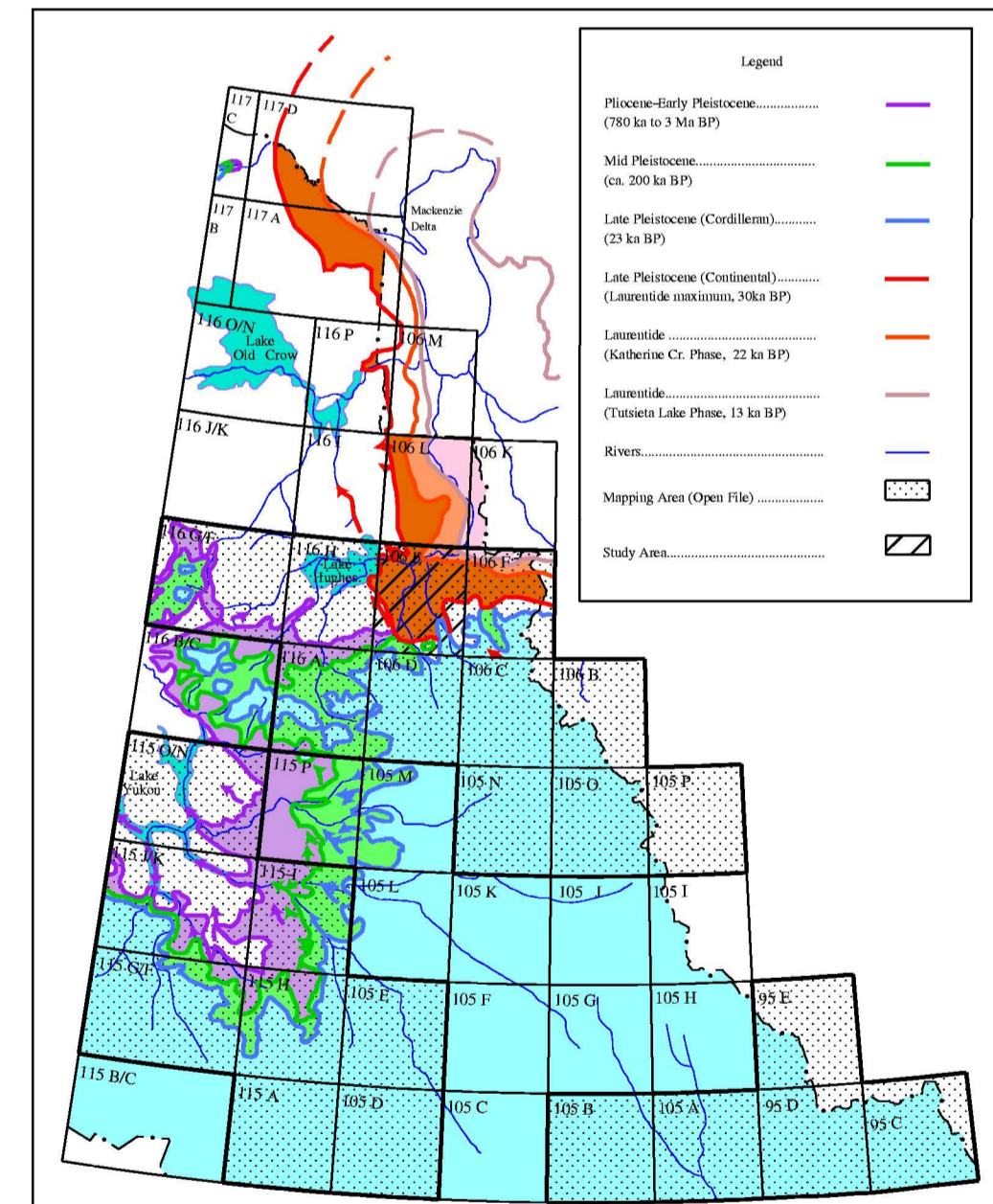


LEGEND GLACIAL LIMITS MAP OF YUKON
(Common Legend for open files in Index Map)

- Holocene**
- Glacial limit
- Late Pleistocene**
- Cordilleran and montane glacial features (ca. 22 ka)**
- Glacial limit (established, interpolated, estimated)
- Glaciofluvial delta or fan
- Meltwater channel (minor, major)
- Erratic
- Laurentide**
- Tutsiata Lake Phase Limit (ca. 13 ka Bp)
- Katherine Creek Phase Limit (ca. 22 ka)
- All time limit (ca. 30 ka) (established, interpolated, estimated)
- Meltwater channel (minor, major)
- Glaciofluvial delta or fan
- Erratic
- Glacial Lake Hughes (estimated)
- Middle Pleistocene (ca. 200 ka)**
- Glacial limit (established, interpolated, estimated)
- Meltwater channel (minor, major)
- Glaciofluvial delta or fan
- Erratic
- Pliocene to early Pleistocene (from ca. 3 Ma)**
- Glacial limit (established, interpolated, estimated)
- Meltwater channel (minor, major)
- Glaciofluvial delta or fan
- Erratic
- Local ice cap
- Glacial Lake Yukon (estimated)
- Uncorrelated glacial features**
- Meltwater channel
- Erratic
- Cirques
- Yukon/N.W.T. boundary



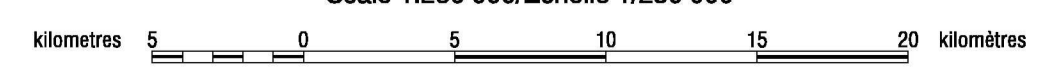
Index and Glacial Limits Map of Yukon

Airphoto interpretation and fieldwork by A. Duk-Rodkin, 1989, 1997.

Digital compilation by D. Nunez

NTS 106 E
GLACIAL LIMITS
WIND RIVER
WEST OF SIXTH MERIDIAN
YUKON TERRITORY

Scale 1:250 000/Échelle 1/250 000



Transverse Mercator Projection / Projection transverse de Mercator
North American Datum 1927 / Système de référence géodésique nord-américain, 1927
© Her Majesty the Queen in Right of Canada, 2001 / © Sa Majesté la Reine du chef du Canada, 2001

OPEN FILE DOSSIER PUBLIC 3795
GEOLOGICAL SURVEY OF CANADA
COMMISSION GÉOLOGIQUE DU CANADA
OTTAWA
05/2001



Recommended citation:
Duk-Rodkin, A.,
2001. Glacial limits of Wind River,
Yukon Territory (106 E). Geological Survey
of Canada. Open File 3795, scale 1:250 000.